

# Select

MODEL MANAGEMENT

500 Bishop St NW SUITE A-2, Atlanta, 30318, Georgia, United States  
Phone: (404) 872-7444 Fax: (404) 874-1526 Email: info.atlanta@selectmodel.com Website: <https://selectmodel.com/>

## Robert Stewart

Height 185cm / 6' 1.0"

Waist 81cm / 32"

Shoes EU/US/UK 44 / 11 / 9.5

Eyes Blue green

Hair Brown

Chest 107cm / 42"

Inseam 81cm / 32"

Neck 41cm / 16"

Sleeve 86cm / 34"

Suit size 52cm / 42"

Suit cut Regular



## Robert Stewart

Height 185cm / 6' 1.0"

Waist 81cm / 32"

Shoes EU/US/UK 44 / 11 / 9.5

Eyes Blue green

Hair Brown

Chest 107cm / 42"

Inseam 81cm / 32"

Neck 41cm / 16"

Sleeve 86cm / 34"

Suit size 52cm / 42"

Suit cut Regular



# Select

MODEL MANAGEMENT

500 Bishop St NW SUITE A-2, Atlanta, 30318, Georgia, United States  
Phone: (404) 872-7444 Fax: (404) 874-1526 Email: info.atlanta@selectmodel.com Website: https://selectmodel.com/

## Robert Stewart

Height 185cm / 6' 1.0"

Waist 81cm / 32"

Shoes EU/US/UK 44 / 11 / 9.5

Eyes Blue green

Hair Brown

Chest 107cm / 42"

Inseam 81cm / 32"

Neck 41cm / 16"

Sleeve 86cm / 34"

Suit size 52cm / 42"

Suit cut Regular



**High-performance Quarter-zip Cotton Pullover with Fashion Accents**  
Paprika/Crux Marl (on model), also at left: Mangaki/Crux Marl, Bright Blue/Crux Marl, Paprika/Crux Marl, and Deep Navy/Crux Marl. Durable double-lock knit with rib-knit trim and contrast color piping detail. 70% cotton, 30% microfiber, machine washable. Style 2065 - \$355

Shown with: **Plaid Twill Italian-made Sport Shirt.** Navy/Multi. Wrinkle-resistant fabric in classic fit with fashion cutaway collar. 100% cotton, hand-tailored in Italy; machine washable. Style 6094 - \$225



**From the cover:**  
**3-D Grid Merino Wool Quarter-zip Pullover**

Style 4063 - \$445

Crux Marl, St. Croix exclusive multi-color jacquard pullover is patterned front and back with solid color sleeves; handcrafted in the USA. 100% Merino wool. Dry clean only.

Shown with: **Updated Clipper Italian-made Sport Shirt.** Blue/Tan. Classic fit in wrinkle-resistant fabric fashion cutaway collar. Hand-tailored in Italy of the finest 100% woven cotton. Machine washable. Style 7234 - \$235

# Select

MODEL MANAGEMENT

500 Bishop St NW SUITE A-2, Atlanta, 30318, Georgia, United States

Phone: (404) 872-7444 Fax: (404) 874-1526 Email: info.atlanta@selectmodel.com Website: <https://selectmodel.com/>

## Robert Stewart

Height 185cm / 6' 1.0"

Waist 81cm / 32"

Shoes EU/US/UK 44 / 11 / 9.5

Eyes Blue green

Hair Brown

Chest 107cm / 42"

Inseam 81cm / 32"

Neck 41cm / 16"

Sleeve 86cm / 34"

Suit size 52cm / 42"

Suit cut Regular



# Select

MODEL MANAGEMENT

500 Bishop St NW SUITE A-2, Atlanta, 30318, Georgia, United States  
**Phone:** (404) 872-7444 **Fax:** (404) 874-1526 **Email:** info.atlanta@selectmodel.com **Website:** <https://selectmodel.com/>

## Robert Stewart

Height 185cm / 6' 1.0"

Waist 81cm / 32"

Shoes EU/US/UK 44 / 11 / 9.5

Eyes Blue green

Hair Brown

Chest 107cm / 42"

Inseam 81cm / 32"

Neck 41cm / 16"

Sleeve 86cm / 34"

Suit size 52cm / 42"

Suit cut Regular



# Select

MODEL MANAGEMENT

500 Bishop St NW SUITE A-2, Atlanta, 30318, Georgia, United States  
**Phone:** (404) 872-7444 **Fax:** (404) 874-1526 **Email:** info.atlanta@selectmodel.com **Website:** <https://selectmodel.com/>

## Robert Stewart

Height 185cm / 6' 1.0"

Waist 81cm / 32"

Shoes EU/US/UK 44 / 11 / 9.5

Eyes Blue green

Hair Brown

Chest 107cm / 42"

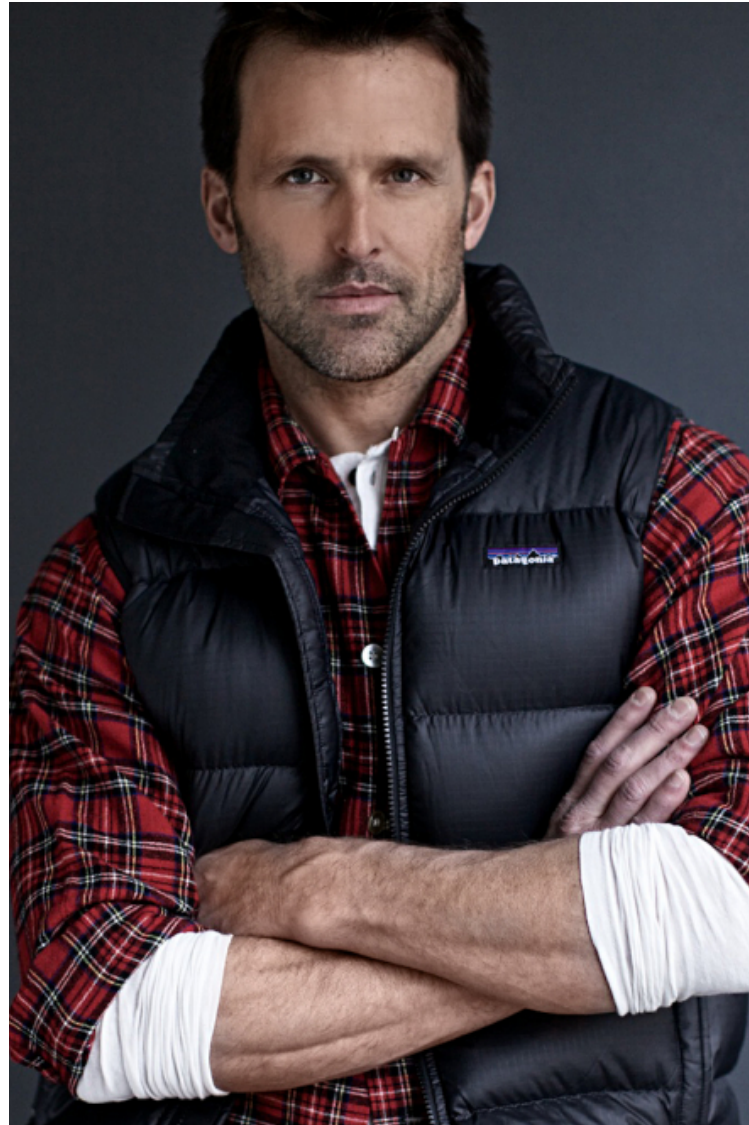
Inseam 81cm / 32"

Neck 41cm / 16"

Sleeve 86cm / 34"

Suit size 52cm / 42"

Suit cut Regular



# Select

MODEL MANAGEMENT

500 Bishop St NW SUITE A-2, Atlanta, 30318, Georgia, United States  
**Phone:** (404) 872-7444 **Fax:** (404) 874-1526 **Email:** info.atlanta@selectmodel.com **Website:** <https://selectmodel.com/>

## Robert Stewart

Height 185cm / 6' 1.0"

Waist 81cm / 32"

Shoes EU/US/UK 44 / 11 / 9.5

Eyes Blue green

Hair Brown

Chest 107cm / 42"

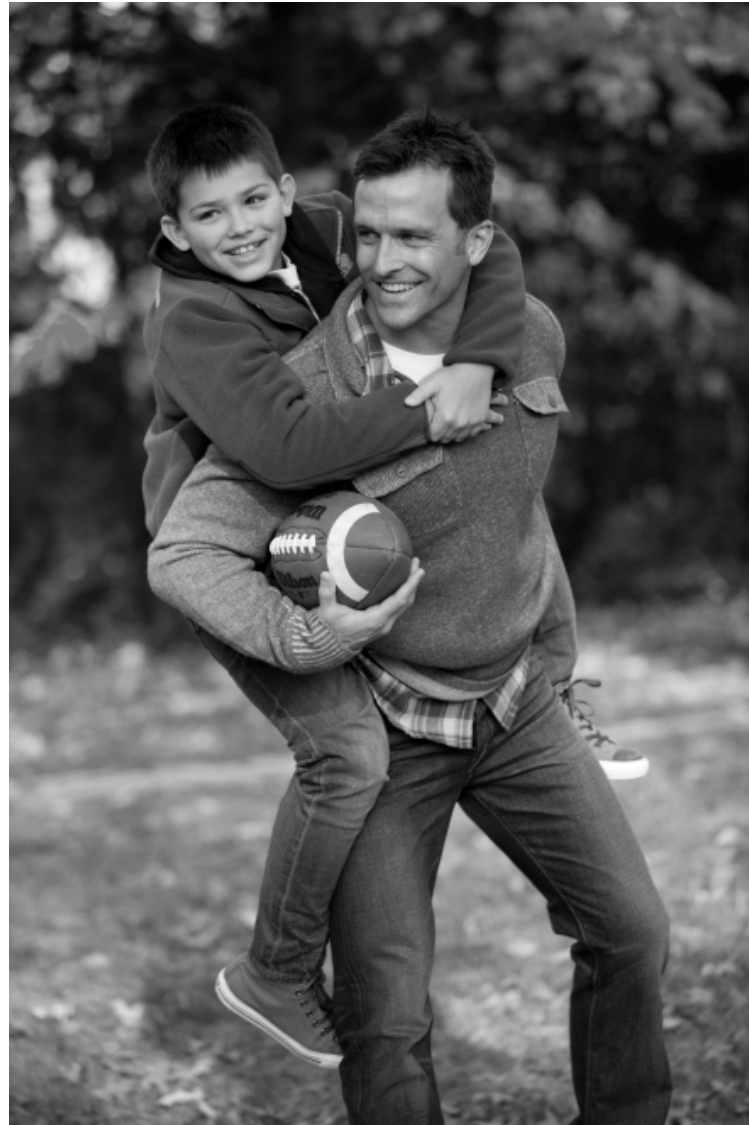
Inseam 81cm / 32"

Neck 41cm / 16"

Sleeve 86cm / 34"

Suit size 52cm / 42"

Suit cut Regular



# Select

MODEL MANAGEMENT

500 Bishop St NW SUITE A-2, Atlanta, 30318, Georgia, United States  
**Phone:** (404) 872-7444 **Fax:** (404) 874-1526 **Email:** info.atlanta@selectmodel.com **Website:** <https://selectmodel.com/>

## Robert Stewart

Height 185cm / 6' 1.0"

Waist 81cm / 32"

Shoes EU/US/UK 44 / 11 / 9.5

Eyes Blue green

Hair Brown

Chest 107cm / 42"

Inseam 81cm / 32"

Neck 41cm / 16"

Sleeve 86cm / 34"

Suit size 52cm / 42"

Suit cut Regular





# Select

MODEL MANAGEMENT

500 Bishop St NW SUITE A-2, Atlanta, 30318, Georgia, United States  
**Phone:** (404) 872-7444 **Fax:** (404) 874-1526 **Email:** info.atlanta@selectmodel.com **Website:** <https://selectmodel.com/>

## Robert Stewart

Height 185cm / 6' 1.0"

Waist 81cm / 32"

Shoes EU/US/UK 44 / 11 / 9.5

Eyes Blue green

Hair Brown

Chest 107cm / 42"

Inseam 81cm / 32"

Neck 41cm / 16"

Sleeve 86cm / 34"

Suit size 52cm / 42"

Suit cut Regular



# Select

MODEL MANAGEMENT

500 Bishop St NW SUITE A-2, Atlanta, 30318, Georgia, United States

Phone: (404) 872-7444 Fax: (404) 874-1526 Email: [info.atlanta@selectmodel.com](mailto:info.atlanta@selectmodel.com) Website: <https://selectmodel.com/>

## Robert Stewart

Height 185cm / 6' 1.0"

Waist 81cm / 32"

Shoes EU/US/UK 44 / 11 / 9.5

Eyes Blue green

Hair Brown

Chest 107cm / 42"

Inseam 81cm / 32"

Neck 41cm / 16"

Sleeve 86cm / 34"

Suit size 52cm / 42"

Suit cut Regular



# Select

MODEL MANAGEMENT

500 Bishop St NW SUITE A-2, Atlanta, 30318, Georgia, United States  
**Phone:** (404) 872-7444 **Fax:** (404) 874-1526 **Email:** info.atlanta@selectmodel.com **Website:** <https://selectmodel.com/>

## Robert Stewart

Height 185cm / 6' 1.0"

Waist 81cm / 32"

Shoes EU/US/UK 44 / 11 / 9.5

Eyes Blue green

Hair Brown

Chest 107cm / 42"

Inseam 81cm / 32"

Neck 41cm / 16"

Sleeve 86cm / 34"

Suit size 52cm / 42"

Suit cut Regular



# Select

MODEL MANAGEMENT

500 Bishop St NW SUITE A-2, Atlanta, 30318, Georgia, United States  
**Phone:** (404) 872-7444 **Fax:** (404) 874-1526 **Email:** info.atlanta@selectmodel.com **Website:** <https://selectmodel.com/>

## Robert Stewart

Height 185cm / 6' 1.0"

Waist 81cm / 32"

Shoes EU/US/UK 44 / 11 / 9.5

Eyes Blue green

Hair Brown

Chest 107cm / 42"

Inseam 81cm / 32"

Neck 41cm / 16"

Sleeve 86cm / 34"

Suit size 52cm / 42"

Suit cut Regular



# Select

MODEL MANAGEMENT

500 Bishop St NW SUITE A-2, Atlanta, 30318, Georgia, United States  
**Phone:** (404) 872-7444 **Fax:** (404) 874-1526 **Email:** info.atlanta@selectmodel.com **Website:** <https://selectmodel.com/>

## Robert Stewart

Height 185cm / 6' 1.0"

Waist 81cm / 32"

Shoes EU/US/UK 44 / 11 / 9.5

Eyes Blue green

Hair Brown

Chest 107cm / 42"

Inseam 81cm / 32"

Neck 41cm / 16"

Sleeve 86cm / 34"

Suit size 52cm / 42"

Suit cut Regular



# Select

MODEL MANAGEMENT

500 Bishop St NW SUITE A-2, Atlanta, 30318, Georgia, United States

Phone: (404) 872-7444 Fax: (404) 874-1526 Email: [info.atlanta@selectmodel.com](mailto:info.atlanta@selectmodel.com) Website: <https://selectmodel.com/>

## Robert Stewart

Height 185cm / 6' 1.0"

Waist 81cm / 32"

Shoes EU/US/UK 44 / 11 / 9.5

Eyes Blue green

Hair Brown

Chest 107cm / 42"

Inseam 81cm / 32"

Neck 41cm / 16"

Sleeve 86cm / 34"

Suit size 52cm / 42"

Suit cut Regular

