

# Select

MODEL MANAGEMENT

500 Bishop St NW SUITE A-2, Atlanta, 30318, Georgia, United States  
**Phone:** (404) 872-7444 **Fax:** (404) 874-1526 **Email:** info.atlanta@selectmodel.com **Website:** <https://selectmodel.com/>

## Tyler Riggin

Height 185cm / 6' 1.0"

Chest 104cm / 41"

Waist 84cm / 33"

Shoes EU/US/UK 45 / 12 / 10.5

Eyes Hazel

Hair Dark brown

Inseam 84cm / 33"

Neck 41cm / 16"

Sleeve 48cm / 19"

Suit size 52cm / 42"

Suit cut Long



# Select

MODEL MANAGEMENT

500 Bishop St NW SUITE A-2, Atlanta, 30318, Georgia, United States  
**Phone:** (404) 872-7444 **Fax:** (404) 874-1526 **Email:** info.atlanta@selectmodel.com **Website:** <https://selectmodel.com/>

## Tyler Riffin

Height 185cm / 6' 1.0"

Chest 104cm / 41"

Waist 84cm / 33"

Shoes EU/US/UK 45 / 12 / 10.5

Eyes Hazel

Hair Dark brown

Inseam 84cm / 33"

Neck 41cm / 16"

Sleeve 48cm / 19"

Suit size 52cm / 42"

Suit cut Long



# Select

MODEL MANAGEMENT

500 Bishop St NW SUITE A-2, Atlanta, 30318, Georgia, United States  
**Phone:** (404) 872-7444 **Fax:** (404) 874-1526 **Email:** info.atlanta@selectmodel.com **Website:** <https://selectmodel.com/>

## Tyler Riffin

Height 185cm / 6' 1.0"

Chest 104cm / 41"

Waist 84cm / 33"

Shoes EU/US/UK 45 / 12 / 10.5

Eyes Hazel

Hair Dark brown

Inseam 84cm / 33"

Neck 41cm / 16"

Sleeve 48cm / 19"

Suit size 52cm / 42"

Suit cut Long



# Select

MODEL MANAGEMENT

500 Bishop St NW SUITE A-2, Atlanta, 30318, Georgia, United States  
Phone: (404) 872-7444 Fax: (404) 874-1526 Email: info.atlanta@selectmodel.com Website: <https://selectmodel.com/>

## Tyler Riffin

Height 185cm / 6' 1.0"

Chest 104cm / 41"

Waist 84cm / 33"

Shoes EU/US/UK 45 / 12 / 10.5

Eyes Hazel

Hair Dark brown

Inseam 84cm / 33"

Neck 41cm / 16"

Sleeve 48cm / 19"

Suit size 52cm / 42"

Suit cut Long



# Select

MODEL MANAGEMENT

500 Bishop St NW SUITE A-2, Atlanta, 30318, Georgia, United States  
**Phone:** (404) 872-7444 **Fax:** (404) 874-1526 **Email:** info.atlanta@selectmodel.com **Website:** <https://selectmodel.com/>

## Tyler Riffin

Height 185cm / 6' 1.0"

Chest 104cm / 41"

Waist 84cm / 33"

Shoes EU/US/UK 45 / 12 / 10.5

Eyes Hazel

Hair Dark brown

Inseam 84cm / 33"

Neck 41cm / 16"

Sleeve 48cm / 19"

Suit size 52cm / 42"

Suit cut Long



# Select

MODEL MANAGEMENT

500 Bishop St NW SUITE A-2, Atlanta, 30318, Georgia, United States  
Phone: (404) 872-7444 Fax: (404) 874-1526 Email: info.atlanta@selectmodel.com Website: <https://selectmodel.com/>

## Tyler Riffin

Height 185cm / 6' 1.0"

Chest 104cm / 41"

Waist 84cm / 33"

Shoes EU/US/UK 45 / 12 / 10.5

Eyes Hazel

Hair Dark brown

Inseam 84cm / 33"

Neck 41cm / 16"

Sleeve 48cm / 19"

Suit size 52cm / 42"

Suit cut Long



## Tyler Riffin

Height 185cm / 6' 1.0"

Chest 104cm / 41"

Waist 84cm / 33"

Shoes EU/US/UK 45 / 12 / 10.5

Eyes Hazel

Hair Dark brown

Inseam 84cm / 33"

Neck 41cm / 16"

Sleeve 48cm / 19"

Suit size 52cm / 42"

Suit cut Long



## Tyler Riffin

Height 185cm / 6' 1.0"

Chest 104cm / 41"

Waist 84cm / 33"

Shoes EU/US/UK 45 / 12 / 10.5

Eyes Hazel

Hair Dark brown

Inseam 84cm / 33"

Neck 41cm / 16"

Sleeve 48cm / 19"

Suit size 52cm / 42"

Suit cut Long





# Select

MODEL MANAGEMENT

500 Bishop St NW SUITE A-2, Atlanta, 30318, Georgia, United States  
**Phone:** (404) 872-7444 **Fax:** (404) 874-1526 **Email:** info.atlanta@selectmodel.com **Website:** <https://selectmodel.com/>

## Tyler Riffin

Height 185cm / 6' 1.0"

Chest 104cm / 41"

Waist 84cm / 33"

Shoes EU/US/UK 45 / 12 / 10.5

Eyes Hazel

Hair Dark brown

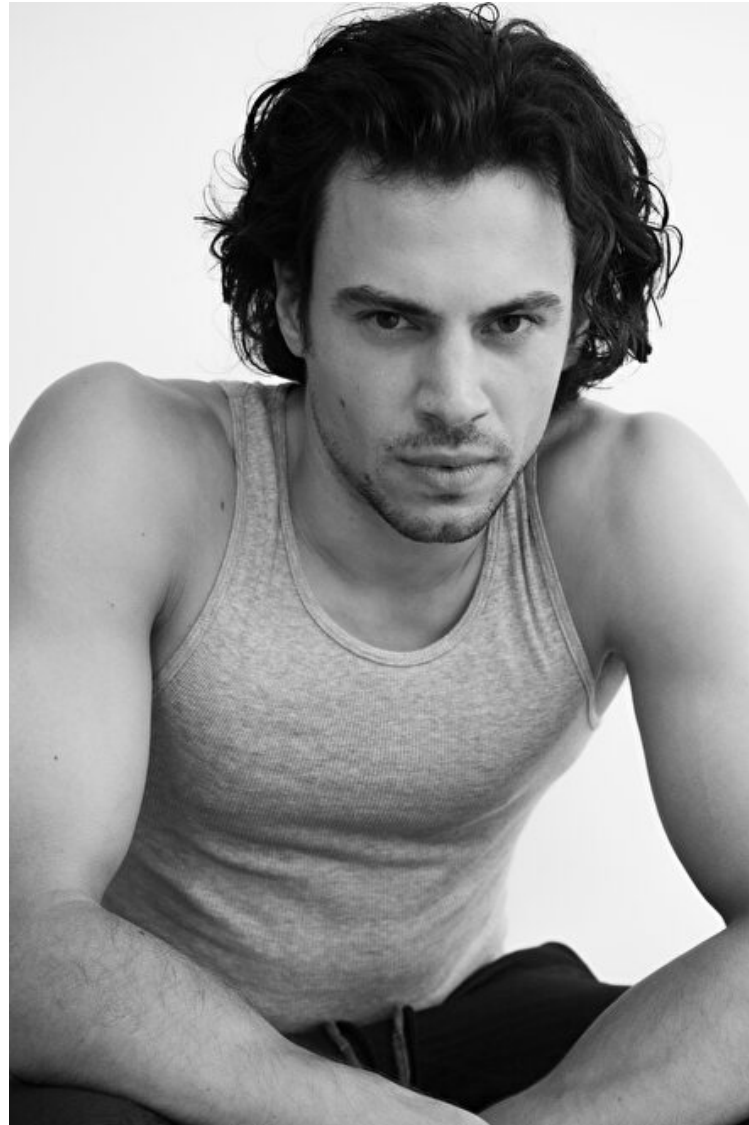
Inseam 84cm / 33"

Neck 41cm / 16"

Sleeve 48cm / 19"

Suit size 52cm / 42"

Suit cut Long



# Select

MODEL MANAGEMENT

500 Bishop St NW SUITE A-2, Atlanta, 30318, Georgia, United States

Phone: (404) 872-7444 Fax: (404) 874-1526 Email: info.atlanta@selectmodel.com Website: <https://selectmodel.com/>

## Tyler Riffin

Height 185cm / 6' 1.0"

Chest 104cm / 41"

Waist 84cm / 33"

Shoes EU/US/UK 45 / 12 / 10.5

Eyes Hazel

Hair Dark brown

Inseam 84cm / 33"

Neck 41cm / 16"

Sleeve 48cm / 19"

Suit size 52cm / 42"

Suit cut Long



# Select

MODEL MANAGEMENT

500 Bishop St NW SUITE A-2, Atlanta, 30318, Georgia, United States  
**Phone:** (404) 872-7444 **Fax:** (404) 874-1526 **Email:** info.atlanta@selectmodel.com **Website:** <https://selectmodel.com/>

## Tyler Riffin

Height 185cm / 6' 1.0"

Chest 104cm / 41"

Waist 84cm / 33"

Shoes EU/US/UK 45 / 12 / 10.5

Eyes Hazel

Hair Dark brown

Inseam 84cm / 33"

Neck 41cm / 16"

Sleeve 48cm / 19"

Suit size 52cm / 42"

Suit cut Long



# Select

MODEL MANAGEMENT

500 Bishop St NW SUITE A-2, Atlanta, 30318, Georgia, United States  
**Phone:** (404) 872-7444 **Fax:** (404) 874-1526 **Email:** info.atlanta@selectmodel.com **Website:** <https://selectmodel.com/>

## Tyler Riffin

Height 185cm / 6' 1.0"

Chest 104cm / 41"

Waist 84cm / 33"

Shoes EU/US/UK 45 / 12 / 10.5

Eyes Hazel

Hair Dark brown

Inseam 84cm / 33"

Neck 41cm / 16"

Sleeve 48cm / 19"

Suit size 52cm / 42"

Suit cut Long

