

## Andrew Bruton

Height 186cm / 6' 1.0"

Chest 101cm / 40"

Waist 84cm / 33"

Hips 99cm / 39"

Shoes EU/US/UK 44.5 / 11.5 / 10

Eyes Blue

Inseam 79cm / 31"

Neck 38cm / 15"

Sleeve 56cm / 22"



## Andrew Bruton

Height 186cm / 6' 1.0"

Chest 101cm / 40"

Waist 84cm / 33"

Hips 99cm / 39"

Shoes EU/US/UK 44.5 / 11.5 /  
10

Eyes Blue

Inseam 79cm / 31"

Neck 38cm / 15"

Sleeve 56cm / 22"



## Andrew Bruton

Height 186cm / 6' 1.0"

Chest 101cm / 40"

Waist 84cm / 33"

Hips 99cm / 39"

Shoes EU/US/UK 44.5 / 11.5 /  
10

Eyes Blue

Inseam 79cm / 31"

Neck 38cm / 15"

Sleeve 56cm / 22"



## Andrew Bruton

Height 186cm / 6' 1.0"

Chest 101cm / 40"

Waist 84cm / 33"

Hips 99cm / 39"

Shoes EU/US/UK 44.5 / 11.5 /  
10

Eyes Blue

Inseam 79cm / 31"

Neck 38cm / 15"

Sleeve 56cm / 22"



## Andrew Bruton

Height 186cm / 6' 1.0"

Chest 101cm / 40"

Waist 84cm / 33"

Hips 99cm / 39"

Shoes EU/US/UK 44.5 / 11.5 /  
10

Eyes Blue

Inseam 79cm / 31"

Neck 38cm / 15"

Sleeve 56cm / 22"



# Select

MODEL MANAGEMENT

2nd floor, 77 ST. Martins Lane (entrance on Cranbourn Street) , London, WC2N 4AA, England, United Kingdom  
**Phone:** +44 (0) 20 7299 1322 **Fax:** +44 (0) 20 7299 1386 **Email:** info@selectmodel.com **Website:** https://www.selectmodel.com/

## Andrew Bruton

Height 186cm / 6' 1.0"

Chest 101cm / 40"

Waist 84cm / 33"

Hips 99cm / 39"

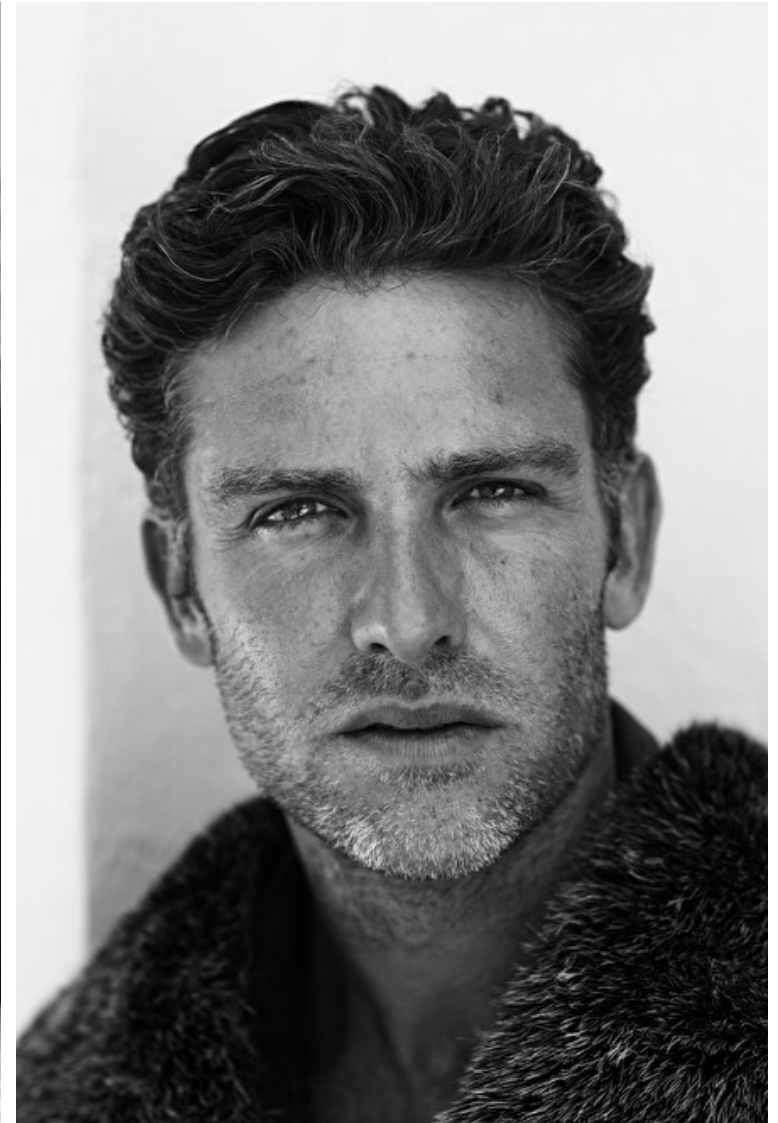
Shoes EU/US/UK 44.5 / 11.5 /  
10

Eyes Blue

Inseam 79cm / 31"

Neck 38cm / 15"

Sleeve 56cm / 22"



# Select

MODEL MANAGEMENT

2nd floor, 77 ST. Martins Lane (entrance on Cranbourn Street) , London, WC2N 4AA, England, United Kingdom  
**Phone:** +44 (0) 20 7299 1322 **Fax:** +44 (0) 20 7299 1386 **Email:** info@selectmodel.com **Website:** https://www.selectmodel.com/

## Andrew Bruton

Height 186cm / 6' 1.0"

Chest 101cm / 40"

Waist 84cm / 33"

Hips 99cm / 39"

Shoes EU/US/UK 44.5 / 11.5 /  
10

Eyes Blue

Inseam 79cm / 31"

Neck 38cm / 15"

Sleeve 56cm / 22"



## Andrew Bruton

Height 186cm / 6' 1.0"

Chest 101cm / 40"

Waist 84cm / 33"

Hips 99cm / 39"

Shoes EU/US/UK 44.5 / 11.5 /  
10

Eyes Blue

Inseam 79cm / 31"

Neck 38cm / 15"

Sleeve 56cm / 22"





# Select

MODEL MANAGEMENT

2nd floor, 77 ST. Martins Lane (entrance on Cranbourn Street) , London, WC2N 4AA, England, United Kingdom  
**Phone:** +44 (0) 20 7299 1322 **Fax:** +44 (0) 20 7299 1386 **Email:** info@selectmodel.com **Website:** <https://www.selectmodel.com/>

## Andrew Bruton

Height 186cm / 6' 1.0"

Chest 101cm / 40"

Waist 84cm / 33"

Hips 99cm / 39"

Shoes EU/US/UK 44.5 / 11.5 /  
10

Eyes Blue

Inseam 79cm / 31"

Neck 38cm / 15"

Sleeve 56cm / 22"



# Select

MODEL MANAGEMENT

2nd floor, 77 ST. Martins Lane (entrance on Cranbourn Street) , London, WC2N 4AA, England, United Kingdom  
**Phone:** +44 (0) 20 7299 1322 **Fax:** +44 (0) 20 7299 1386 **Email:** info@selectmodel.com **Website:** https://www.selectmodel.com/

## Andrew Bruton

Height 186cm / 6' 1.0"

Chest 101cm / 40"

Waist 84cm / 33"

Hips 99cm / 39"

Shoes EU/US/UK 44.5 / 11.5 /  
10

Eyes Blue

Inseam 79cm / 31"

Neck 38cm / 15"

Sleeve 56cm / 22"



## Andrew Bruton

Height 186cm / 6' 1.0"

Chest 101cm / 40"

Waist 84cm / 33"

Hips 99cm / 39"

Shoes EU/US/UK 44.5 / 11.5 /  
10

Eyes Blue

Inseam 79cm / 31"

Neck 38cm / 15"

Sleeve 56cm / 22"

select  
DEL MANAGEMENT  
020 7299 1322

