

CAMILLA RUTHERFORD

Height 170cm / 5' 7.0"

Bust 86cm / 34"

Cup B

Hips 84cm / 33"

Waist 64cm / 25"

Shoes EU/US/UK 38 / 7.5 / 5

Hair Brown

Hair length 3

Eyes Green



Select

MODEL MANAGEMENT

2nd floor, 77 ST. Martins Lane, London, 00000, England, United Kingdom
Phone: +44 20 7299 1300 Fax: +44 20 7299 1385 Email: info@selectmodel.com Website: https://www.selectmodel.com/

CAMILLA RUTHERFORD

Height 170cm / 5' 7.0"

Bust 86cm / 34"

Cup B

Hips 84cm / 33"

Waist 64cm / 25"

Shoes EU/US/UK 38 / 7.5 / 5

Hair Brown

Hair length 3

Eyes Green



THIS PAGE: D
E159, Marabou s
E59, Both John L
Women, L
earrings,
Eclectica, in
selection of ce
vintage pair
John L
LEFT: Sequin ja
E69, Tracey B
Blouse, E145, T
Pencil skirt,
Jigsaw, Gold-pl
citrine cr
stud earrings,
Gold-plated Swar
Crystal ring,
Both le

John Lewis edit

CAMILLA RUTHERFORD

Height 170cm / 5' 7.0"

Bust 86cm / 34"

Cup B

Hips 84cm / 33"

Waist 64cm / 25"

Shoes EU/US/UK 38 / 7.5 / 5

Hair Brown

Hair length 3

Eyes Green



Select

MODEL MANAGEMENT

2nd floor, 77 ST. Martins Lane, London, 00000, England, United Kingdom
Phone: +44 20 7299 1300 Fax: +44 20 7299 1385 Email: info@selectmodel.com Website: https://www.selectmodel.com/

CAMILLA RUTHERFORD

Height 170cm / 5' 7.0"

Bust 86cm / 34"

Cup B

Hips 84cm / 33"

Waist 64cm / 25"

Shoes EU/US/UK 38 / 7.5 / 5

Hair Brown

Hair length 3

Eyes Green



Select

MODEL MANAGEMENT

2nd floor, 77 ST. Martins Lane, London, 00000, England, United Kingdom
Phone: +44 20 7299 1300 Fax: +44 20 7299 1385 Email: info@selectmodel.com Website: https://www.selectmodel.com/

CAMILLA RUTHERFORD

Height 170cm / 5' 7.0"

Bust 86cm / 34"

Cup B

Hips 84cm / 33"

Waist 64cm / 25"

Shoes EU/US/UK 38 / 7.5 / 5

Hair Brown

Hair length 3

Eyes Green



CAMILLA RUTHERFORD

Height 170cm / 5' 7.0"

Bust 86cm / 34"

Cup B

Hips 84cm / 33"

Waist 64cm / 25"

Shoes EU/US/UK 38 / 7.5 / 5

Hair Brown

Hair length 3

Eyes Green



Select

MODEL MANAGEMENT

2nd floor, 77 ST. Martins Lane, London, 00000, England, United Kingdom
Phone: +44 20 7299 1300 Fax: +44 20 7299 1385 Email: info@selectmodel.com Website: https://www.selectmodel.com/

CAMILLA RUTHERFORD

Height 170cm / 5' 7.0"

Bust 86cm / 34"

Cup B

Hips 84cm / 33"

Waist 64cm / 25"

Shoes EU/US/UK 38 / 7.5 / 5

Hair Brown

Hair length 3

Eyes Green



Select

MODEL MANAGEMENT

2nd floor, 77 ST. Martins Lane, London, 00000, England, United Kingdom
Phone: +44 20 7299 1300 Fax: +44 20 7299 1385 Email: info@selectmodel.com Website: https://www.selectmodel.com/

CAMILLA RUTHERFORD

Height 170cm / 5' 7.0"

Bust 86cm / 34"

Cup B

Hips 84cm / 33"

Waist 64cm / 25"

Shoes EU/US/UK 38 / 7.5 / 5

Hair Brown

Hair length 3

Eyes Green



Select

MODEL MANAGEMENT

2nd floor, 77 ST. Martins Lane, London, 00000, England, United Kingdom

Phone: +44 20 7299 1300 Fax: +44 20 7299 1385 Email: info@selectmodel.com Website: https://www.selectmodel.com/

CAMILLA RUTHERFORD

Height 170cm / 5' 7.0"

Bust 86cm / 34"

Cup B

Hips 84cm / 33"

Waist 64cm / 25"

Shoes EU/US/UK 38 / 7.5 / 5

Hair Brown

Hair length 3

Eyes Green



CAMILLA RUTHERFORD

Height 170cm / 5' 7.0"

Bust 86cm / 34"

Cup B

Hips 84cm / 33"

Waist 64cm / 25"

Shoes EU/US/UK 38 / 7.5 / 5

Hair Brown

Hair length 3

Eyes Green

Whether you prefer to smoulder in the background or stand out from the crowd, be inspired by these party make-up looks that are as versatile as our elegant model, *Gosford Park* star Camilla Rutherford. HAIR: JO GUANALE-BLACKBURN

Belle of the ball

Actress Camilla Rutherford is no stranger to modelling. She got her lucky break 13 years ago gracing the fashion pages of *Vogue*, but her real love is acting. "You get to immerse yourself in a different type of character," she says. "It's not an easy job, but it's what I love." Now, since winning the Bright Young Things Max Factor Studio Talent Award for young actresses, she has a lucrative three-year contract with the cosmetics giant. Still only 28, she combines acting and modelling with her other roles as a wife and as a mother to her 2-year-old son.

Known for her elegant appearance in period films such as *Gosford Park* and *Vanity Fair*, Camilla is the first to admit that her daily style is "effortless -- as in very little effort," she laughs. "But I do like dressing up. I admire the sophistication of stars like Nicole Kidman, and icons such as Grace Kelly."

Hollywood glamour

Red lips with black eyeliner is a classic movie-star look guaranteed to get you noticed on the red carpet -- think Scarlett Johansson at the Oscars. To get this glamorous effect, "start with a warm foundation," says Camilla's make-up artist, Ashley Ward, "then dust lightly with powder to remove excess shine." Ashley loves *Chanel Universal Loose Powder*, £22.50. She also suggests keeping a pack of facial blotting papers with you, such as *Shiseido The Makeup Brilliant Enhancing Paper*, £12.

Powder the eyelids, too, then apply a classic Audrey Hepburn-style eye line using a liquid liner. "Opt for dark brown rather than black," says Ashley. "It's softer and looks more flattering. Start from the inner corner of the eye, moving outwards to the corner of the lashes, sweeping up at the edge to lift the shape of the eye."

Next, curl your lashes and apply two coats of *Max Factor More Lashes Mascara*, £7.95, then go for a bold red lipstick. *Max Factor Lipfinity EverLites in Joyful*, £9.99, is perfect for a long-wearing, dramatic red mouth. "This classic, movie-star red is bold, but actually suits most women," says Ashley. To finish the look, lightly warm and soften cheeks with a little pink blush and a hint of shimmer applied from the brows to the cheekbones. ▶

WWW.SHE.CO.UK 157



The model-turned-actress Camilla Rutherford, 27, is wandering barefoot from room to room through a suite at Claridge's. If it were for the opulent setting and a baby sleeping nearby, you'd forgive her for thinking that she was a guilty schoolgirl raiding her moth wardrobe. She staggers around in a Louis Vuit dress and vertiginous heels with an unmitigably furtive smile.

"Darling, do you like my dress?" she asks her husband coquettishly.

Rufus Abbott, 25, wears the tolerant, strained expression of any man left to languish outside a changing room while his significant other tries on the entire shop. "Yes, you're gorgeous, darling," he replies patiently and as our fashion editor for a beer. Still, who needs male approval when you've got a wardrobe Chanel and Gucci to wear?

This is Camilla's first modelling shoot since her baby son Hector's arrival six weeks earlier and it shows. "It's sooo nice to get dressed up," she says excitedly, in an accent as English as tea room. It's not just her accent that hints at something vaguely aristocratic. The pale porcelain skin, gamine bob and breathless enthusiasm all lie straight from, erm, *Gosford Park*.

Of course, this is why we know Camilla Rutherford. She may be a successful model working on campaigns for Burberry and Cluigne, and for British and Italian *Vogue*, but it's her role as Isobel McCordle, the shy, still daughter of Kristin Scott Thomas's character that has earned her star potential. Yet the *Gosford Park* demureness is quite misleading: an fragile gamine features aside, she is more urban street than country pile.

Camilla and her Old Harrovian husband are busily doing up her house in gritty Kensal Rise bought with her hard-earned wages from modelling. Her mother, Elizabeth, a magistrate, lives nearby, as do her sisters, Emma, 29, who works in financial PR, and Loretta, 24, a freelance writer. Her late father, Malcolm, a distinguished political journalist and assistant editor at the *Financial Times* and an advisor to Margaret Thatcher, died, aged 60, after an operation for an intestinal problem. He threw a party to celebrate her casting in *Stardom* (a satire on the media and fashion world released two years ago) but never saw her in a film. He was, she says, hugely encouraging.

"He pursued and pushed things," she says. "I want to carry on that flame." She tries not to be bitter and angry that he died after a routine operation. "I am just happy to have had such a great father. We are very close as a family. I like a family environment -- my husband, my baby, my cat. I like a full house and things going on. It gives you a base."

As a girl she was sent to a series of smart schools including Francis Holland and St George's, Ascot, but never found one that quite suited her. "My mind was scatty, I wasn't interested in boys, I didn't like my teachers and I was quite boohie," she says matter-of-factly.

It was when she left London to go to Woodbridge School in rural Suffolk that her modelling potential was 'discovered'. She was 16 and appeared as a case study for a make-over feature in *Just 17*. Someone there suggested modelling and the next minute she had signed with Storm.

"Intimidated and bewildered" by the industry, she took time out to do a maths degree at

CAMILLA RUTHERFORD

Height 170cm / 5' 7.0"

Bust 86cm / 34"

Cup B

Hips 84cm / 33"

Waist 64cm / 25"

Shoes EU/US/UK 38 / 7.5 / 5

Hair Brown

Hair length 3

Eyes Green



La casa encantada

PRINCIPIOS DEL SIGLO XIX. VIRGINIA Y SUS AMIGOS,
EL GRUPO DE EL DOMBURY SE REUNIAN EN LA CASA
DE LA ESCRITORA PARA HABLAR DE LITERATURA,
FILOSOFIA, ARTE... Y DE UNA REVOLUCION DE LA QUE
ELLOS MISMOS ERAN PROTAGONISTAS. TODO ELLO, EN
UNA ESTETICA ENTRE VICTORIANA Y BOHEMIA. UN LOOK
RECUPERADO POR LOS DISENADORES DEL XXI. EN ESTA
FOTO, VESTIDO ESTAMPADO CON PECHO Y MANGAS
DRAPEADAS. BRAS VAN HOTEN, MEDIAS TUPIDAS (MAX
MARA) Y ZAPATOS CON LAZOS (SALVADOR SOPERA).

Select

MODEL MANAGEMENT

2nd floor, 77 ST. Martins Lane, London, 00000, England, United Kingdom

Phone: +44 20 7299 1300 Fax: +44 20 7299 1385 Email: info@selectmodel.com Website: https://www.selectmodel.com/

CAMILLA RUTHERFORD

Height 170cm / 5' 7.0"

Bust 86cm / 34"

Cup B

Hips 84cm / 33"

Waist 64cm / 25"

Shoes EU/US/UK 38 / 7.5 / 5

Hair Brown

Hair length 3

Eyes Green



Select

MODEL MANAGEMENT

2nd floor, 77 ST. Martins Lane, London, 00000, England, United Kingdom

Phone: +44 20 7299 1300 Fax: +44 20 7299 1385 Email: info@selectmodel.com Website: https://www.selectmodel.com/

CAMILLA RUTHERFORD

Height 170cm / 5' 7.0"

Bust 86cm / 34"

Cup B

Hips 84cm / 33"

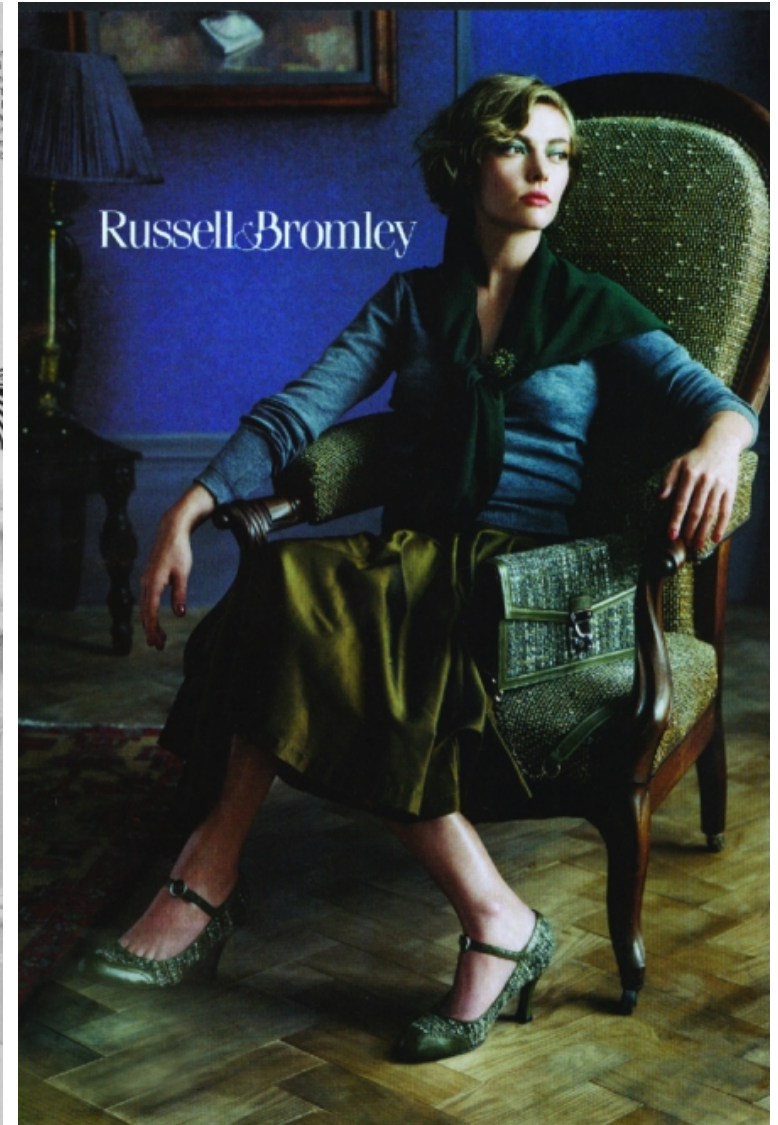
Waist 64cm / 25"

Shoes EU/US/UK 38 / 7.5 / 5

Hair Brown

Hair length 3

Eyes Green



Select

MODEL MANAGEMENT

2nd floor, 77 ST. Martins Lane, London, 00000, England, United Kingdom
Phone: +44 20 7299 1300 Fax: +44 20 7299 1385 Email: info@selectmodel.com Website: https://www.selectmodel.com/

CAMILLA RUTHERFORD

Height 170cm / 5' 7.0"

Bust 86cm / 34"

Cup B

Hips 84cm / 33"

Waist 64cm / 25"

Shoes EU/US/UK 38 / 7.5 / 5

Hair Brown

Hair length 3

Eyes Green



OLAY

Viste a los niños.
Vístete.

Prepáralos el desayuno.
Prepara algo ligero para ti.

Pénsala.
Pénsate.

Termina sus deberes.
Termina tu informe.

Encuentra los zapatos de todos.

Por la mañana ya tienes que hacer todo dos veces.
Por eso te presentamos una crema anti-edad dos en uno, con un toque de maquillaje y una crema de ojos dos en uno, con un toque de corrector.

Nueva Total Effects Touch of Foundation.
Ahora tienes dos nuevos productos anti-edad que, al igual que tú, realizan múltiples tareas. Ambos combaten los 7 principales signos de envejecimiento y además con un toque de color de Max Factor. Uno con un toque de base de maquillaje para un tono más uniforme. El otro, con un toque de corrector para reducir instantáneamente la apariencia de las ojeras y la hinchazón. Ahora anti-edad y maquillaje dos en uno.

Te gustará estar en tu piel.

total effects

Select

MODEL MANAGEMENT

2nd floor, 77 ST. Martins Lane, London, 00000, England, United Kingdom

Phone: +44 20 7299 1300 Fax: +44 20 7299 1385 Email: info@selectmodel.com Website: <https://www.selectmodel.com/>

CAMILLA RUTHERFORD

Height 170cm / 5' 7.0"

Bust 86cm / 34"

Cup B

Hips 84cm / 33"

Waist 64cm / 25"

Shoes EU/US/UK 38 / 7.5 / 5

Hair Brown

Hair length 3

Eyes Green

