

Clint Mauro

Height 190cm / 6' 3.0"

Size EU/US 40 / 10

Chest 89cm / 35"

Waist 81cm / 32"

Hips 91cm / 36"

Shoes EU/US/UK 44 / 11 / 9.5

Eyes Hazel

Hair Brown

Select

MODEL MANAGEMENT

2nd floor, 77 ST. Martins Lane (entrance on Cranbourn Street) , London, WC2N 4AA, England, United Kingdom
Phone: +44 (0) 20 7299 1322 **Fax:** +44 (0) 20 7299 1386 **Email:** info@selectmodel.com **Website:** https://www.selectmodel.com/

Clint Mauro

Height 190cm / 6' 3.0"

Size EU/US 40 / 10

Chest 89cm / 35"

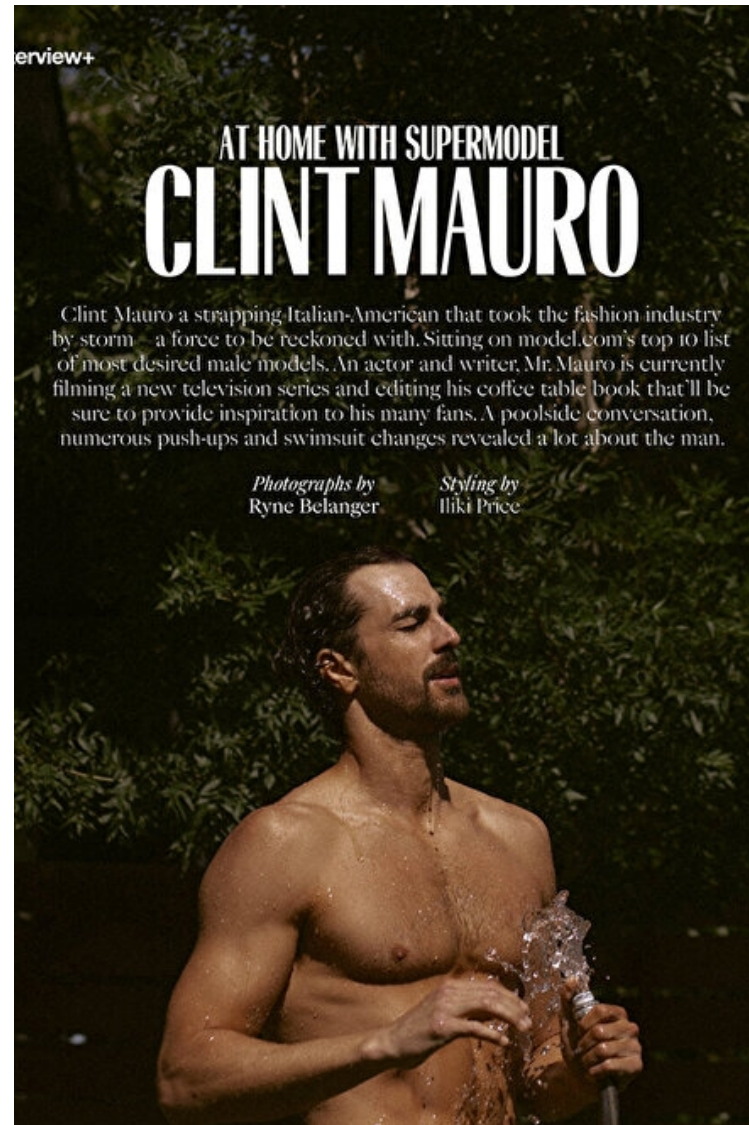
Waist 81cm / 32"

Hips 91cm / 36"

Shoes EU/US/UK 44 / 11 / 9.5

Eyes Hazel

Hair Brown



Select

MODEL MANAGEMENT

2nd floor, 77 ST. Martins Lane (entrance on Cranbourn Street) , London, WC2N 4AA, England, United Kingdom
Phone: +44 (0) 20 7299 1322 Fax: +44 (0) 20 7299 1386 Email: info@selectmodel.com Website: https://www.selectmodel.com/

Clint Mauro

Height 190cm / 6' 3.0"

Size EU/US 40 / 10

Chest 89cm / 35"

Waist 81cm / 32"

Hips 91cm / 36"

Shoes EU/US/UK 44 / 11 / 9.5

Eyes Hazel

Hair Brown



Select

MODEL MANAGEMENT

2nd floor, 77 ST. Martins Lane (entrance on Cranbourn Street) , London, WC2N 4AA, England, United Kingdom
Phone: +44 (0) 20 7299 1322 **Fax:** +44 (0) 20 7299 1386 **Email:** info@selectmodel.com **Website:** https://www.selectmodel.com/

Clint Mauro

Height 190cm / 6' 3.0"

Size EU/US 40 / 10

Chest 89cm / 35"

Waist 81cm / 32"

Hips 91cm / 36"

Shoes EU/US/UK 44 / 11 / 9.5

Eyes Hazel

Hair Brown



Select

MODEL MANAGEMENT

2nd floor, 77 ST. Martins Lane (entrance on Cranbourn Street) , London, WC2N 4AA, England, United Kingdom
Phone: +44 (0) 20 7299 1322 **Fax:** +44 (0) 20 7299 1386 **Email:** info@selectmodel.com **Website:** https://www.selectmodel.com/

Clint Mauro

Height 190cm / 6' 3.0"

Size EU/US 40 / 10

Chest 89cm / 35"

Waist 81cm / 32"

Hips 91cm / 36"

Shoes EU/US/UK 44 / 11 / 9.5

Eyes Hazel

Hair Brown



Select

MODEL MANAGEMENT

2nd floor, 77 ST. Martins Lane (entrance on Cranbourn Street) , London, WC2N 4AA, England, United Kingdom
Phone: +44 (0) 20 7299 1322 **Fax:** +44 (0) 20 7299 1386 **Email:** info@selectmodel.com **Website:** https://www.selectmodel.com/

Clint Mauro

Height 190cm / 6' 3.0"

Size EU/US 40 / 10

Chest 89cm / 35"

Waist 81cm / 32"

Hips 91cm / 36"

Shoes EU/US/UK 44 / 11 / 9.5

Eyes Hazel

Hair Brown



Select

MODEL MANAGEMENT

2nd floor, 77 ST. Martins Lane (entrance on Cranbourn Street) , London, WC2N 4AA, England, United Kingdom
Phone: +44 (0) 20 7299 1322 Fax: +44 (0) 20 7299 1386 Email: info@selectmodel.com Website: https://www.selectmodel.com/

Clint Mauro

Height 190cm / 6' 3.0"

Size EU/US 40 / 10

Chest 89cm / 35"

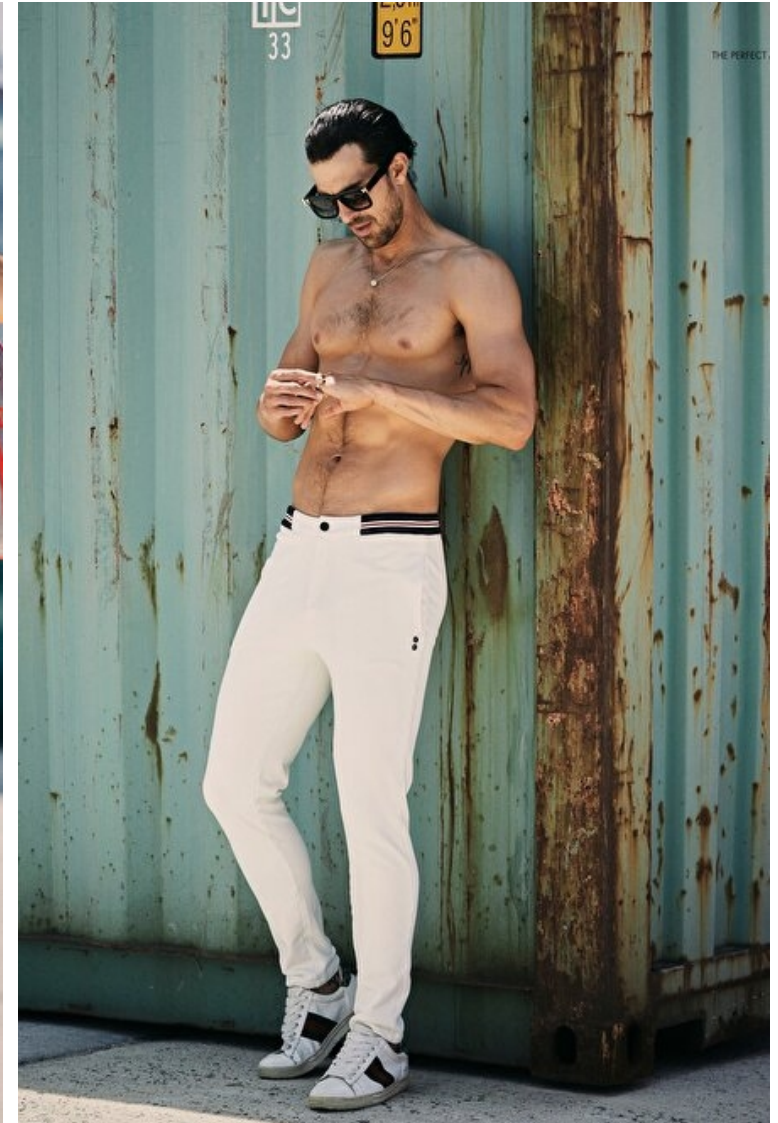
Waist 81cm / 32"

Hips 91cm / 36"

Shoes EU/US/UK 44 / 11 / 9.5

Eyes Hazel

Hair Brown



Select

MODEL MANAGEMENT

2nd floor, 77 ST. Martins Lane (entrance on Cranbourn Street) , London, WC2N 4AA, England, United Kingdom
Phone: +44 (0) 20 7299 1322 **Fax:** +44 (0) 20 7299 1386 **Email:** info@selectmodel.com **Website:** https://www.selectmodel.com/

Clint Mauro

Height 190cm / 6' 3.0"

Size EU/US 40 / 10

Chest 89cm / 35"

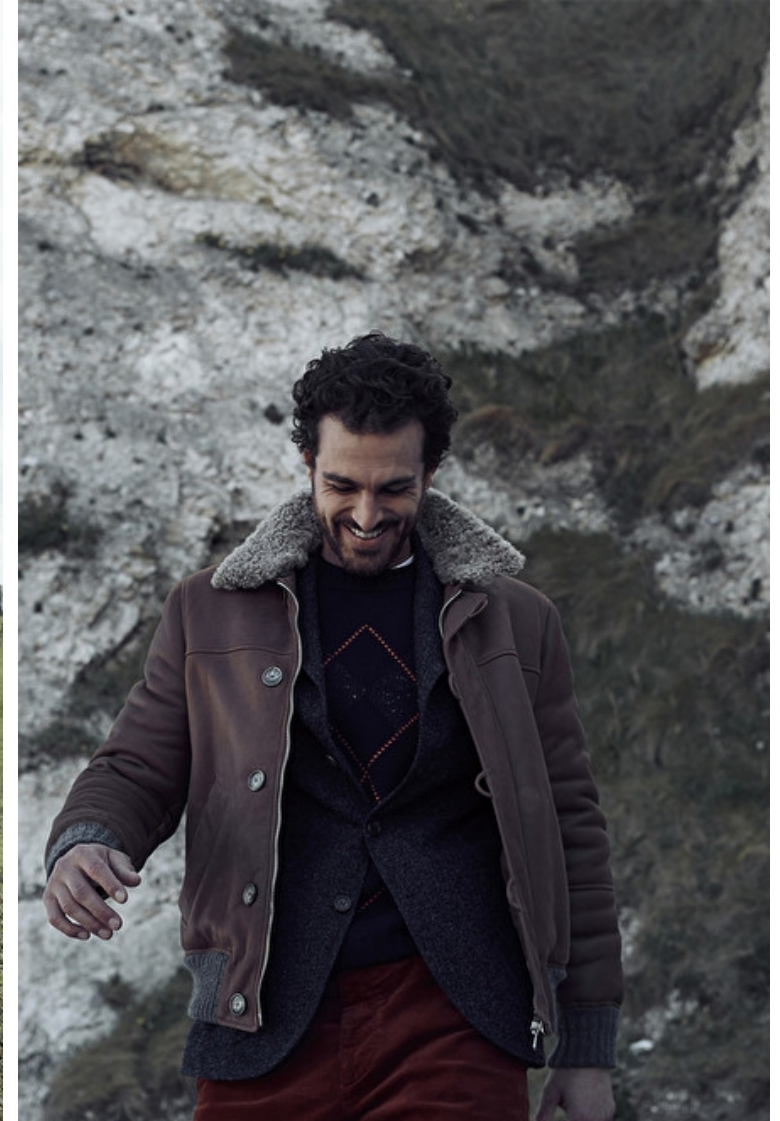
Waist 81cm / 32"

Hips 91cm / 36"

Shoes EU/US/UK 44 / 11 / 9.5

Eyes Hazel

Hair Brown



Select

MODEL MANAGEMENT

2nd floor, 77 ST. Martins Lane (entrance on Cranbourn Street) , London, WC2N 4AA, England, United Kingdom
Phone: +44 (0) 20 7299 1322 **Fax:** +44 (0) 20 7299 1386 **Email:** info@selectmodel.com **Website:** https://www.selectmodel.com/

Clint Mauro

Height 190cm / 6' 3.0"

Size EU/US 40 / 10

Chest 89cm / 35"

Waist 81cm / 32"

Hips 91cm / 36"

Shoes EU/US/UK 44 / 11 / 9.5

Eyes Hazel

Hair Brown



Select

MODEL MANAGEMENT

2nd floor, 77 ST. Martins Lane (entrance on Cranbourn Street) , London, WC2N 4AA, England, United Kingdom
Phone: +44 (0) 20 7299 1322 **Fax:** +44 (0) 20 7299 1386 **Email:** info@selectmodel.com **Website:** https://www.selectmodel.com/

Clint Mauro

Height 190cm / 6' 3.0"

Size EU/US 40 / 10

Chest 89cm / 35"

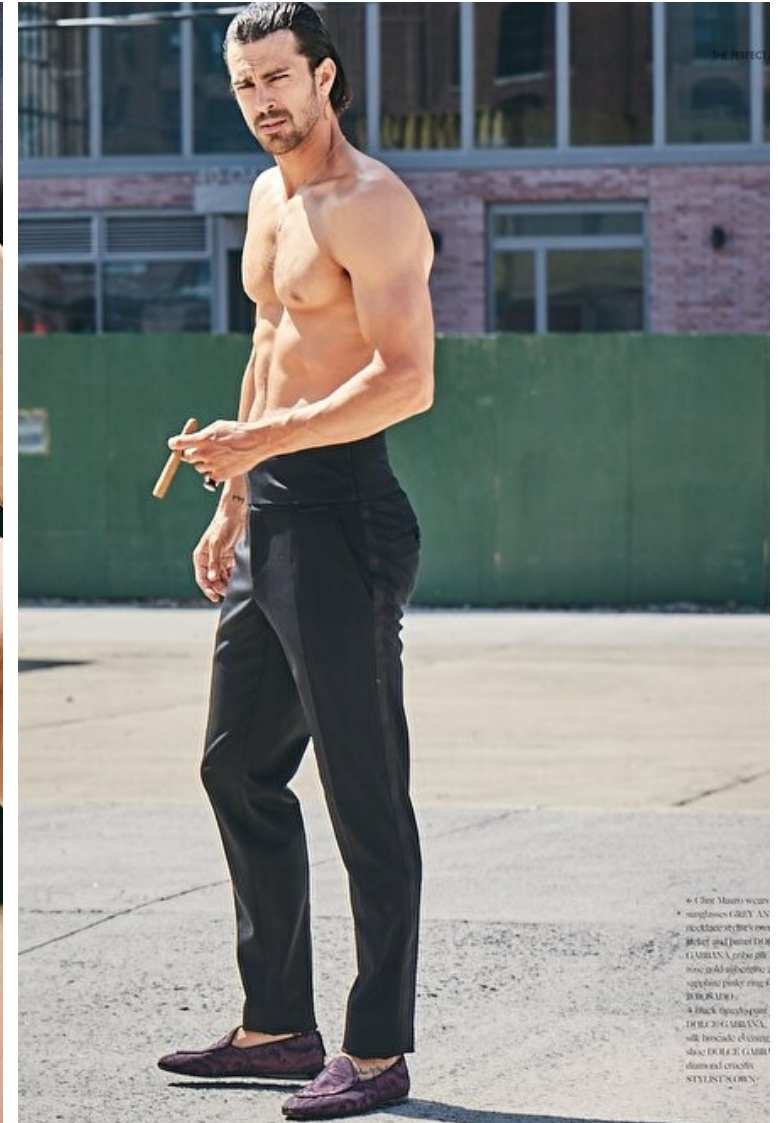
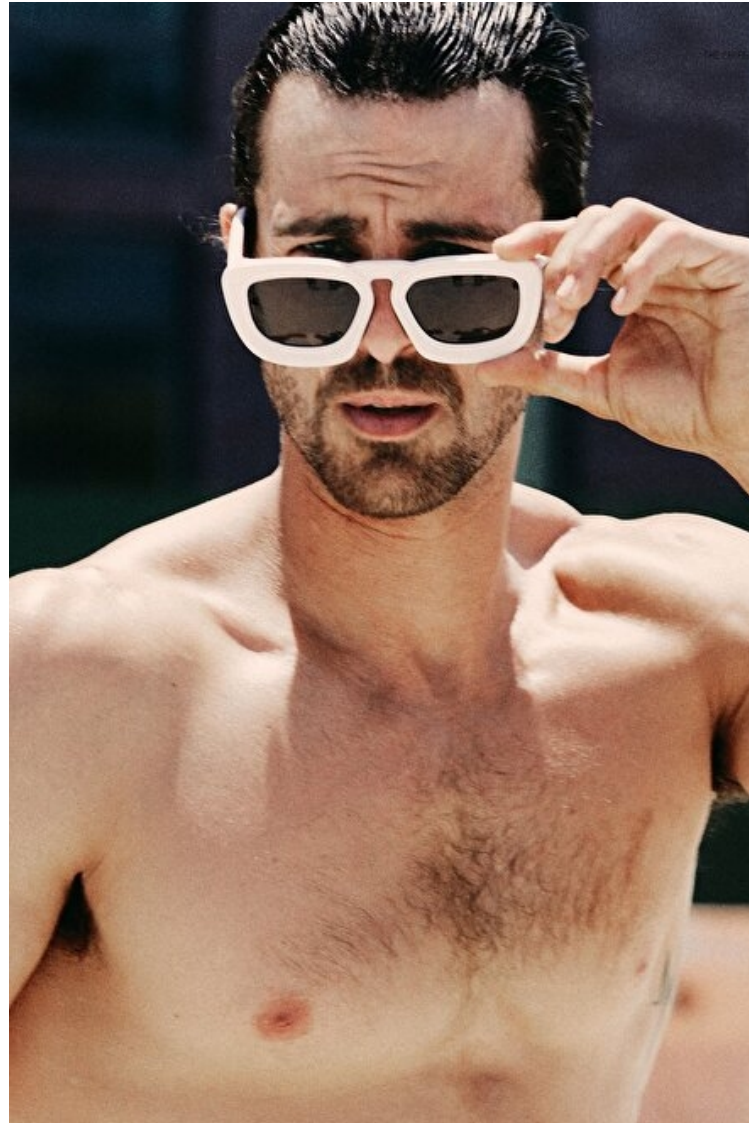
Waist 81cm / 32"

Hips 91cm / 36"

Shoes EU/US/UK 44 / 11 / 9.5

Eyes Hazel

Hair Brown



Clint Mauro wears sunglasses GUESS, necklace Steve's own, watch and James Dean GAMBINO, cufflinks, nose ring and earring: 1 eggplant pink ring by JESSIE MARO, a black ring by James Dean GAMBINO, and brooch: 18K gold, shoe: DOLCE & GABBANI diamond crucifix. STYLING: NADIA

Select

MODEL MANAGEMENT

2nd floor, 77 ST. Martins Lane (entrance on Cranbourn Street) , London, WC2N 4AA, England, United Kingdom
Phone: +44 (0) 20 7299 1322 **Fax:** +44 (0) 20 7299 1386 **Email:** info@selectmodel.com **Website:** https://www.selectmodel.com/

Clint Mauro

Height 190cm / 6' 3.0"

Size EU/US 40 / 10

Chest 89cm / 35"

Waist 81cm / 32"

Hips 91cm / 36"

Shoes EU/US/UK 44 / 11 / 9.5

Eyes Hazel

Hair Brown



Select

MODEL MANAGEMENT

2nd floor, 77 ST. Martins Lane (entrance on Cranbourn Street) , London, WC2N 4AA, England, United Kingdom
Phone: +44 (0) 20 7299 1322 **Fax:** +44 (0) 20 7299 1386 **Email:** info@selectmodel.com **Website:** https://www.selectmodel.com/

Clint Mauro

Height 190cm / 6' 3.0"

Size EU/US 40 / 10

Chest 89cm / 35"

Waist 81cm / 32"

Hips 91cm / 36"

Shoes EU/US/UK 44 / 11 / 9.5

Eyes Hazel

Hair Brown



Select

MODEL MANAGEMENT

2nd floor, 77 ST. Martins Lane (entrance on Cranbourn Street) , London, WC2N 4AA, England, United Kingdom
Phone: +44 (0) 20 7299 1322 **Fax:** +44 (0) 20 7299 1386 **Email:** info@selectmodel.com **Website:** https://www.selectmodel.com/

Clint Mauro

Height 190cm / 6' 3.0"

Size EU/US 40 / 10

Chest 89cm / 35"

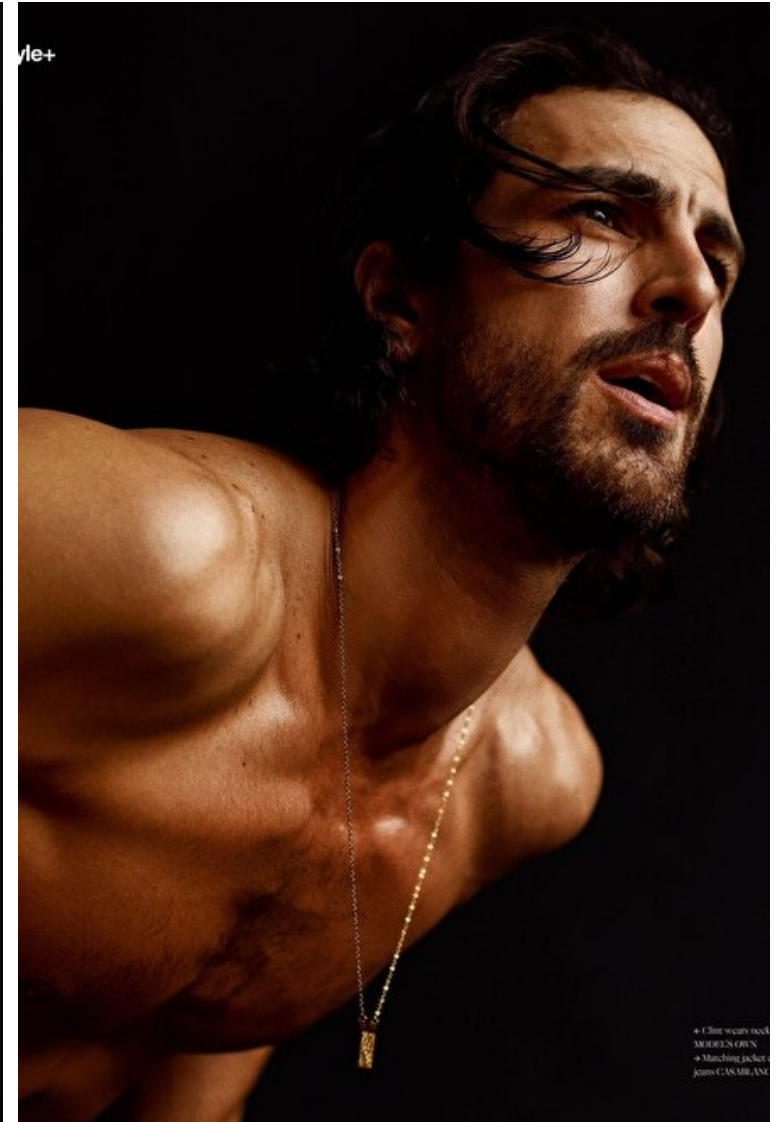
Waist 81cm / 32"

Hips 91cm / 36"

Shoes EU/US/UK 44 / 11 / 9.5

Eyes Hazel

Hair Brown



Select

MODEL MANAGEMENT

2nd floor, 77 ST. Martins Lane (entrance on Cranbourn Street) , London, WC2N 4AA, England, United Kingdom
Phone: +44 (0) 20 7299 1322 **Fax:** +44 (0) 20 7299 1386 **Email:** info@selectmodel.com **Website:** https://www.selectmodel.com/

Clint Mauro

Height 190cm / 6' 3.0"

Size EU/US 40 / 10

Chest 89cm / 35"

Waist 81cm / 32"

Hips 91cm / 36"

Shoes EU/US/UK 44 / 11 / 9.5

Eyes Hazel

Hair Brown



BRUNELLO CUCINELL

Select

MODEL MANAGEMENT

2nd floor, 77 ST. Martins Lane (entrance on Cranbourn Street) , London, WC2N 4AA, England, United Kingdom
Phone: +44 (0) 20 7299 1322 **Fax:** +44 (0) 20 7299 1386 **Email:** info@selectmodel.com **Website:** https://www.selectmodel.com/

Clint Mauro

Height 190cm / 6' 3.0"

Size EU/US 40 / 10

Chest 89cm / 35"

Waist 81cm / 32"

Hips 91cm / 36"

Shoes EU/US/UK 44 / 11 / 9.5

Eyes Hazel

Hair Brown



Select

MODEL MANAGEMENT

2nd floor, 77 ST. Martins Lane (entrance on Cranbourn Street) , London, WC2N 4AA, England, United Kingdom
Phone: +44 (0) 20 7299 1322 Fax: +44 (0) 20 7299 1386 Email: info@selectmodel.com Website: https://www.selectmodel.com/

Clint Mauro

Height 190cm / 6' 3.0"

Size EU/US 40 / 10

Chest 89cm / 35"

Waist 81cm / 32"

Hips 91cm / 36"

Shoes EU/US/UK 44 / 11 / 9.5

Eyes Hazel

Hair Brown



Select

MODEL MANAGEMENT

2nd floor, 77 ST. Martins Lane (entrance on Cranbourn Street) , London, WC2N 4AA, England, United Kingdom
Phone: +44 (0) 20 7299 1322 Fax: +44 (0) 20 7299 1386 Email: info@selectmodel.com Website: https://www.selectmodel.com/

Clint Mauro

Height 190cm / 6' 3.0"

Size EU/US 40 / 10

Chest 89cm / 35"

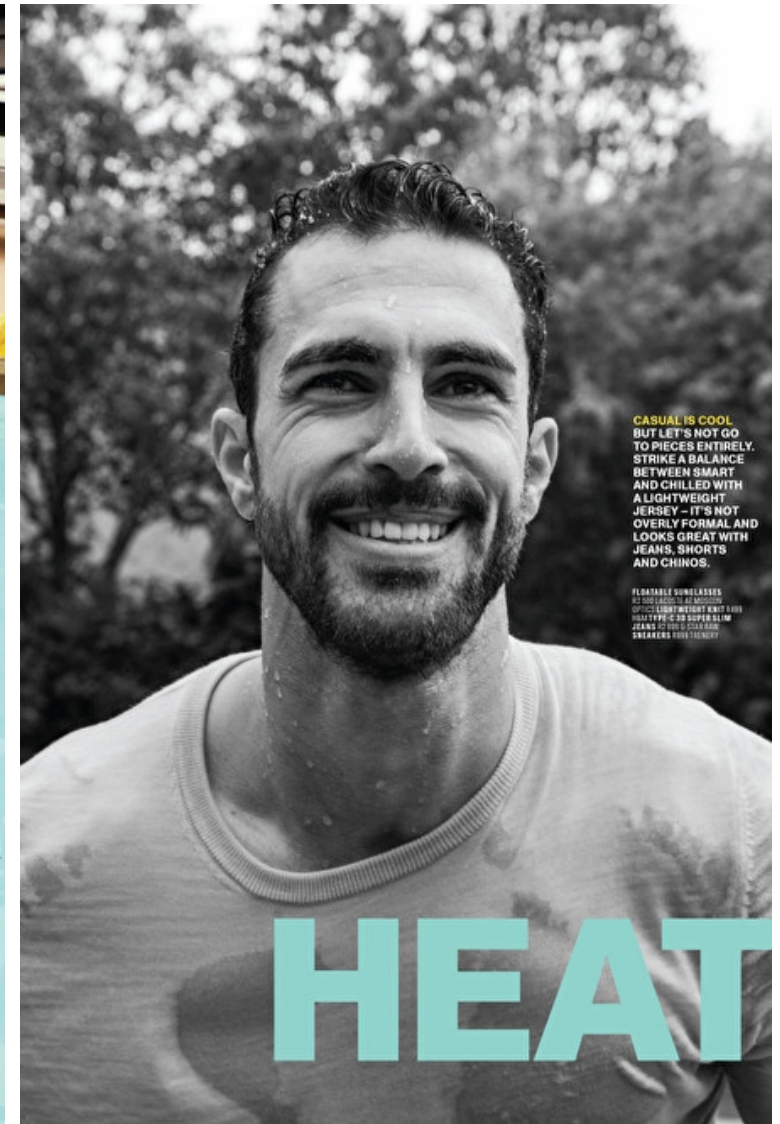
Waist 81cm / 32"

Hips 91cm / 36"

Shoes EU/US/UK 44 / 11 / 9.5

Eyes Hazel

Hair Brown



Select

MODEL MANAGEMENT

2nd floor, 77 ST. Martins Lane (entrance on Cranbourn Street) , London, WC2N 4AA, England, United Kingdom
Phone: +44 (0) 20 7299 1322 **Fax:** +44 (0) 20 7299 1386 **Email:** info@selectmodel.com **Website:** https://www.selectmodel.com/

Clint Mauro

Height 190cm / 6' 3.0"

Size EU/US 40 / 10

Chest 89cm / 35"

Waist 81cm / 32"

Hips 91cm / 36"

Shoes EU/US/UK 44 / 11 / 9.5

Eyes Hazel

Hair Brown



Select

MODEL MANAGEMENT

2nd floor, 77 ST. Martins Lane (entrance on Cranbourn Street) , London, WC2N 4AA, England, United Kingdom
Phone: +44 (0) 20 7299 1322 **Fax:** +44 (0) 20 7299 1386 **Email:** info@selectmodel.com **Website:** https://www.selectmodel.com/

Clint Mauro

Height 190cm / 6' 3.0"

Size EU/US 40 / 10

Chest 89cm / 35"

Waist 81cm / 32"

Hips 91cm / 36"

Shoes EU/US/UK 44 / 11 / 9.5

Eyes Hazel

Hair Brown



Select

MODEL MANAGEMENT

2nd floor, 77 ST. Martins Lane (entrance on Cranbourn Street) , London, WC2N 4AA, England, United Kingdom
Phone: +44 (0) 20 7299 1322 **Fax:** +44 (0) 20 7299 1386 **Email:** info@selectmodel.com **Website:** https://www.selectmodel.com/

Clint Mauro

Height 190cm / 6' 3.0"

Size EU/US 40 / 10

Chest 89cm / 35"

Waist 81cm / 32"

Hips 91cm / 36"

Shoes EU/US/UK 44 / 11 / 9.5

Eyes Hazel

Hair Brown



The power watch

No style of watch is as essential or more collectible than a simple, black-strapped analogue. It goes with most, if not all suited looks, making it versatile and long-lasting. It is bold without being flashy, which is particularly useful in a work environment where you want to convey strength without arrogance. For aspiring collectors, entry level and investment pieces include a number of brands and styles.

Trenery blazer R2 999, pants R1 599. Ben Sherman shirt R653. Guess at S Bacher & Co watch R2 195.

99.90.ZA MARCH 2017

Select

MODEL MANAGEMENT

2nd floor, 77 ST. Martins Lane (entrance on Cranbourn Street), London, WC2N 4AA, England, United Kingdom
Phone: +44 (0) 20 7299 1322 Fax: +44 (0) 20 7299 1386 Email: info@selectmodel.com Website: https://www.selectmodel.com/

GGStyl

Clint Mauro

Height 190cm / 6' 3.0"

Size EU/US 40 / 10

Chest 89cm / 35"

Waist 81cm / 32"

Hips 91cm / 36"

Shoes EU/US/UK 44 / 11 / 9.5

Eyes Hazel

Hair Brown



The waistcoat

Though we understand the three-piece to be a dominating style, consider that it can be broken up and worn as a waistcoat and trouser combination. While it is considerably less decorous than a full three-piece, it is still formal and makes for a respectable wardrobe option for young men who need to move around in the office. It is also a great option for accentuating your physical assets, which – whether we like to admit it or not – play an essential role in the psychology of the competitive work environment.

Daniela Alessandrini at Spigetti: Marina blazer and waistcoat R4 890, pants R2 220. Country Road shirt R699. Calvin Klein tie R1 499. Komono at Press Room watch R1 599. \$ Wilton at Alvert shoes R3 400



Platinum club

While grey might be considered one of the staler or more conventional colours in suiting, it is actually one of the most fortifying shades. It has a particular lustre that conveys an air of maturity, wisdom and rationality. By pairing a grey suit with a similarly coloured tie with a slight metallic sheen, the man gains something of an impenetrable strength but without being cold and unapproachable. The sheen also adds a sense of richness.

Topman blazer R2 599
Jonathan D shirt R739
Topman pants R1 999
Calvin Klein tie R1 499
Police at Freshness eyewear R2 990. Ice at L&L Group Forever watch R1 799. Trevery shoes R1 999

MARCH 2017 GG.CO.ZI

Select

MODEL MANAGEMENT

2nd floor, 77 ST. Martins Lane (entrance on Cranbourn Street) , London, WC2N 4AA, England, United Kingdom
Phone: +44 (0) 20 7299 1322 **Fax:** +44 (0) 20 7299 1386 **Email:** info@selectmodel.com **Website:** https://www.selectmodel.com/

Clint Mauro

Height 190cm / 6' 3.0"

Size EU/US 40 / 10

Chest 89cm / 35"

Waist 81cm / 32"

Hips 91cm / 36"

Shoes EU/US/UK 44 / 11 / 9.5

Eyes Hazel

Hair Brown



Select

MODEL MANAGEMENT

2nd floor, 77 ST. Martins Lane (entrance on Cranbourn Street) , London, WC2N 4AA, England, United Kingdom
Phone: +44 (0) 20 7299 1322 **Fax:** +44 (0) 20 7299 1386 **Email:** info@selectmodel.com **Website:** https://www.selectmodel.com/

Clint Mauro

Height 190cm / 6' 3.0"

Size EU/US 40 / 10

Chest 89cm / 35"

Waist 81cm / 32"

Hips 91cm / 36"

Shoes EU/US/UK 44 / 11 / 9.5

Eyes Hazel

Hair Brown



Clint Mauro

Height 190cm / 6' 3.0"

Size EU/US 40 / 10

Chest 89cm / 35"

Waist 81cm / 32"

Hips 91cm / 36"

Shoes EU/US/UK 44 / 11 / 9.5

Eyes Hazel

Hair Brown



Style

The dinner jacket

Any man serious about dining will want to invest in a piece that will suit all occasions, both day and night. Black tie or red carpet affairs require either a tuxedo or a dinner jacket worn with a black suit or smoking trousers. In any case, you'll want something that elevates you without completely disregarding tradition. The dinner jacket is a sensible option. Choose one in a conservative hue like black, but add a sequin, satin or embroidered detail to give it a wow factor without being too trendy. You want something timeless.

Dana blazer R1 799, shirt R429, Polo pants R699, M&M leather bow tie R150, Baren at Bacher & Co watch R 695, Barker shoes R 949



Select

MODEL MANAGEMENT

2nd floor, 77 ST. Martins Lane (entrance on Cranbourn Street) , London, WC2N 4AA, England, United Kingdom
Phone: +44 (0) 20 7299 1322 **Fax:** +44 (0) 20 7299 1386 **Email:** info@selectmodel.com **Website:** https://www.selectmodel.com/

Clint Mauro

Height 190cm / 6' 3.0"

Size EU/US 40 / 10

Chest 89cm / 35"

Waist 81cm / 32"

Hips 91cm / 36"

Shoes EU/US/UK 44 / 11 / 9.5

Eyes Hazel

Hair Brown



Select

MODEL MANAGEMENT

2nd floor, 77 ST. Martins Lane (entrance on Cranbourn Street) , London, WC2N 4AA, England, United Kingdom
Phone: +44 (0) 20 7299 1322 **Fax:** +44 (0) 20 7299 1386 **Email:** info@selectmodel.com **Website:** https://www.selectmodel.com/

Clint Mauro

Height 190cm / 6' 3.0"

Size EU/US 40 / 10

Chest 89cm / 35"

Waist 81cm / 32"

Hips 91cm / 36"

Shoes EU/US/UK 44 / 11 / 9.5

Eyes Hazel

Hair Brown



ESQUIRE - APRIL 2017.