

## DORRIT Li

Height 177cm / 5' 9.5"

Size EU/US 34 / 4

Bust 80cm / 31.5"

Waist 62cm / 24.5"

Hips 91cm / 36"

Shoes EU/US/UK 39 / 8 / 6

Eyes Brown

Hair Black

Cup B

Location LONDON



# Select

MODEL MANAGEMENT

2nd floor, 77 ST. Martins Lane, London, 00000, England, United Kingdom  
Phone: +44 20 7299 1300 Fax: +44 20 7299 1385 Email: info@selectmodel.com Website: <https://www.selectmodel.com/>

## DORRIT Li

Height 177cm / 5' 9.5"

Size EU/US 34 / 4

Bust 80cm / 31.5"

Waist 62cm / 24.5"

Hips 91cm / 36"

Shoes EU/US/UK 39 / 8 / 6

Eyes Brown

Hair Black

Cup B

Location LONDON



# Select

MODEL MANAGEMENT

2nd floor, 77 ST. Martins Lane, London, 00000, England, United Kingdom

Phone: +44 20 7299 1300 Fax: +44 20 7299 1385 Email: [info@selectmodel.com](mailto:info@selectmodel.com) Website: <https://www.selectmodel.com/>

## DORRIT Li

Height 177cm / 5' 9.5"

Size EU/US 34 / 4

Bust 80cm / 31.5"

Waist 62cm / 24.5"

Hips 91cm / 36"

Shoes EU/US/UK 39 / 8 / 6

Eyes Brown

Hair Black

Cup B

Location LONDON



# Select

MODEL MANAGEMENT

2nd floor, 77 ST. Martins Lane, London, 00000, England, United Kingdom

Phone: +44 20 7299 1300 Fax: +44 20 7299 1385 Email: [info@selectmodel.com](mailto:info@selectmodel.com) Website: <https://www.selectmodel.com/>

## DORRIT Li

Height 177cm / 5' 9.5"

Size EU/US 34 / 4

Bust 80cm / 31.5"

Waist 62cm / 24.5"

Hips 91cm / 36"

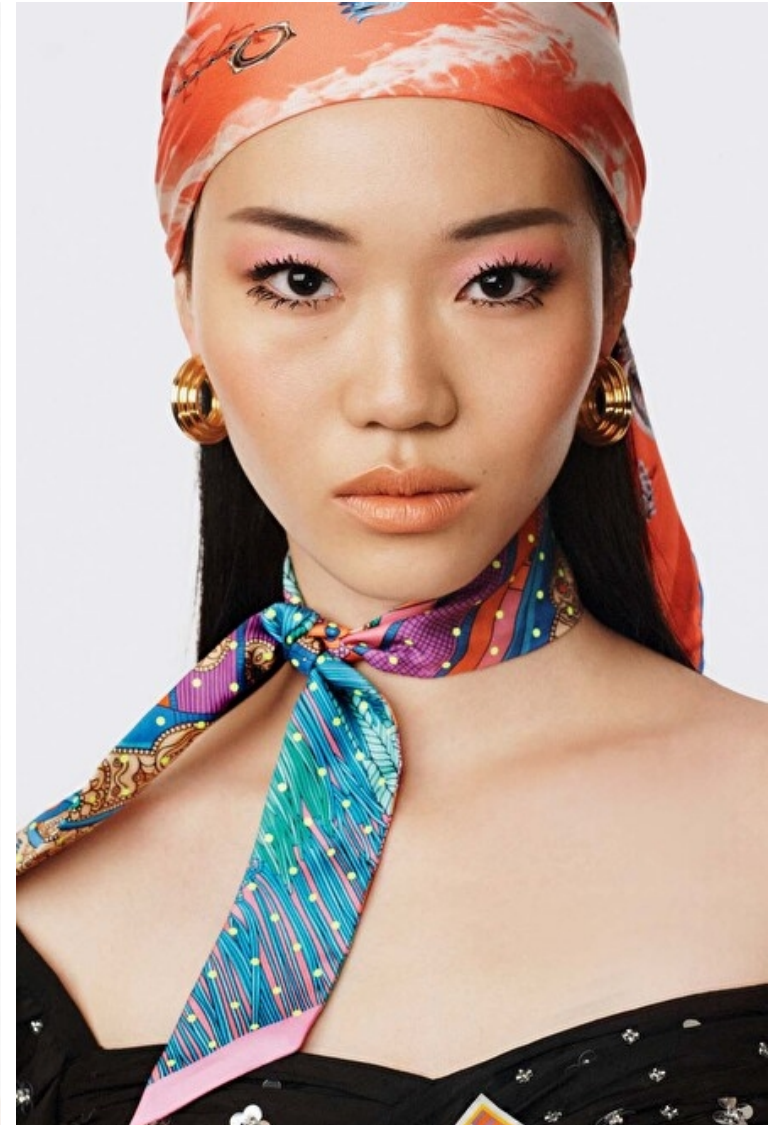
Shoes EU/US/UK 39 / 8 / 6

Eyes Brown

Hair Black

Cup B

Location LONDON



# Select

MODEL MANAGEMENT

2nd floor, 77 ST. Martins Lane, London, 00000, England, United Kingdom

Phone: +44 20 7299 1300 Fax: +44 20 7299 1385 Email: [info@selectmodel.com](mailto:info@selectmodel.com) Website: <https://www.selectmodel.com/>

## DORRIT Li

Height 177cm / 5' 9.5"

Size EU/US 34 / 4

Bust 80cm / 31.5"

Waist 62cm / 24.5"

Hips 91cm / 36"

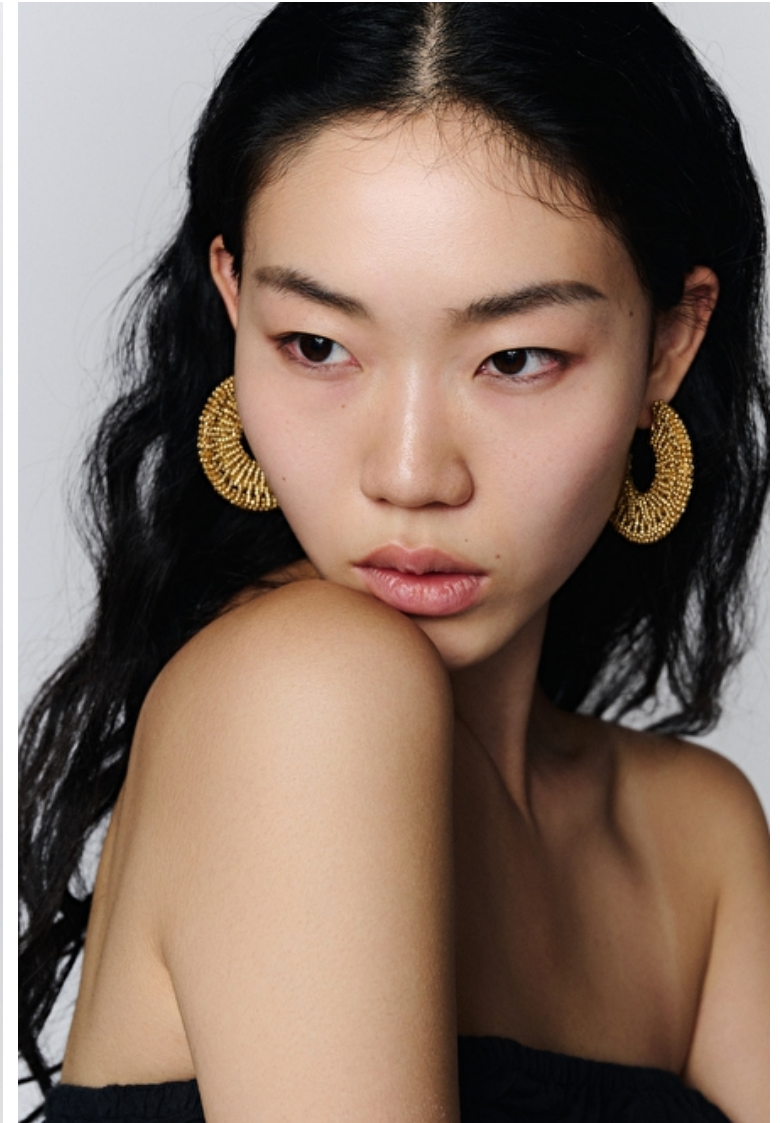
Shoes EU/US/UK 39 / 8 / 6

Eyes Brown

Hair Black

Cup B

Location LONDON



# Select

MODEL MANAGEMENT

2nd floor, 77 ST. Martins Lane, London, 00000, England, United Kingdom

Phone: +44 20 7299 1300 Fax: +44 20 7299 1385 Email: [info@selectmodel.com](mailto:info@selectmodel.com) Website: <https://www.selectmodel.com/>

## DORRIT Li

Height 177cm / 5' 9.5"

Size EU/US 34 / 4

Bust 80cm / 31.5"

Waist 62cm / 24.5"

Hips 91cm / 36"

Shoes EU/US/UK 39 / 8 / 6

Eyes Brown

Hair Black

Cup B

Location LONDON



# Select

MODEL MANAGEMENT

2nd floor, 77 ST. Martins Lane, London, 00000, England, United Kingdom

Phone: +44 20 7299 1300 Fax: +44 20 7299 1385 Email: [info@selectmodel.com](mailto:info@selectmodel.com) Website: <https://www.selectmodel.com/>

## DORRIT Li

Height 177cm / 5' 9.5"

Size EU/US 34 / 4

Bust 80cm / 31.5"

Waist 62cm / 24.5"

Hips 91cm / 36"

Shoes EU/US/UK 39 / 8 / 6

Eyes Brown

Hair Black

Cup B

Location LONDON



# Select

MODEL MANAGEMENT

2nd floor, 77 ST. Martins Lane, London, 00000, England, United Kingdom  
Phone: +44 20 7299 1300 Fax: +44 20 7299 1385 Email: info@selectmodel.com Website: <https://www.selectmodel.com/>

## DORRIT Li

Height 177cm / 5' 9.5"

Size EU/US 34 / 4

Bust 80cm / 31.5"

Waist 62cm / 24.5"

Hips 91cm / 36"

Shoes EU/US/UK 39 / 8 / 6

Eyes Brown

Hair Black

Cup B

Location LONDON



# Select

MODEL MANAGEMENT

2nd floor, 77 ST. Martins Lane, London, 00000, England, United Kingdom  
**Phone:** +44 20 7299 1300 **Fax:** +44 20 7299 1385 **Email:** info@selectmodel.com **Website:** https://www.selectmodel.com/

## DORRIT Li

Height 177cm / 5' 9.5"

Size EU/US 34 / 4

Bust 80cm / 31.5"

Waist 62cm / 24.5"

Hips 91cm / 36"

Shoes EU/US/UK 39 / 8 / 6

Eyes Brown

Hair Black

Cup B

Location LONDON



# Select

MODEL MANAGEMENT

2nd floor, 77 ST. Martins Lane, London, 00000, England, United Kingdom  
Phone: +44 20 7299 1300 Fax: +44 20 7299 1385 Email: [info@selectmodel.com](mailto:info@selectmodel.com) Website: <https://www.selectmodel.com/>

## DORRIT Li

Height 177cm / 5' 9.5"

Size EU/US 34 / 4

Bust 80cm / 31.5"

Waist 62cm / 24.5"

Hips 91cm / 36"

Shoes EU/US/UK 39 / 8 / 6

Eyes Brown

Hair Black

Cup B

Location LONDON



# Select

MODEL MANAGEMENT

2nd floor, 77 ST. Martins Lane, London, 00000, England, United Kingdom

Phone: +44 20 7299 1300 Fax: +44 20 7299 1385 Email: [info@selectmodel.com](mailto:info@selectmodel.com) Website: <https://www.selectmodel.com/>

## DORRIT Li

Height 177cm / 5' 9.5"

Size EU/US 34 / 4

Bust 80cm / 31.5"

Waist 62cm / 24.5"

Hips 91cm / 36"

Shoes EU/US/UK 39 / 8 / 6

Eyes Brown

Hair Black

Cup B

Location LONDON



# Select

MODEL MANAGEMENT

2nd floor, 77 ST. Martins Lane, London, 00000, England, United Kingdom  
**Phone:** +44 20 7299 1300 **Fax:** +44 20 7299 1385 **Email:** info@selectmodel.com **Website:** https://www.selectmodel.com/

## DORRIT Li

Height 177cm / 5' 9.5"

Size EU/US 34 / 4

Bust 80cm / 31.5"

Waist 62cm / 24.5"

Hips 91cm / 36"

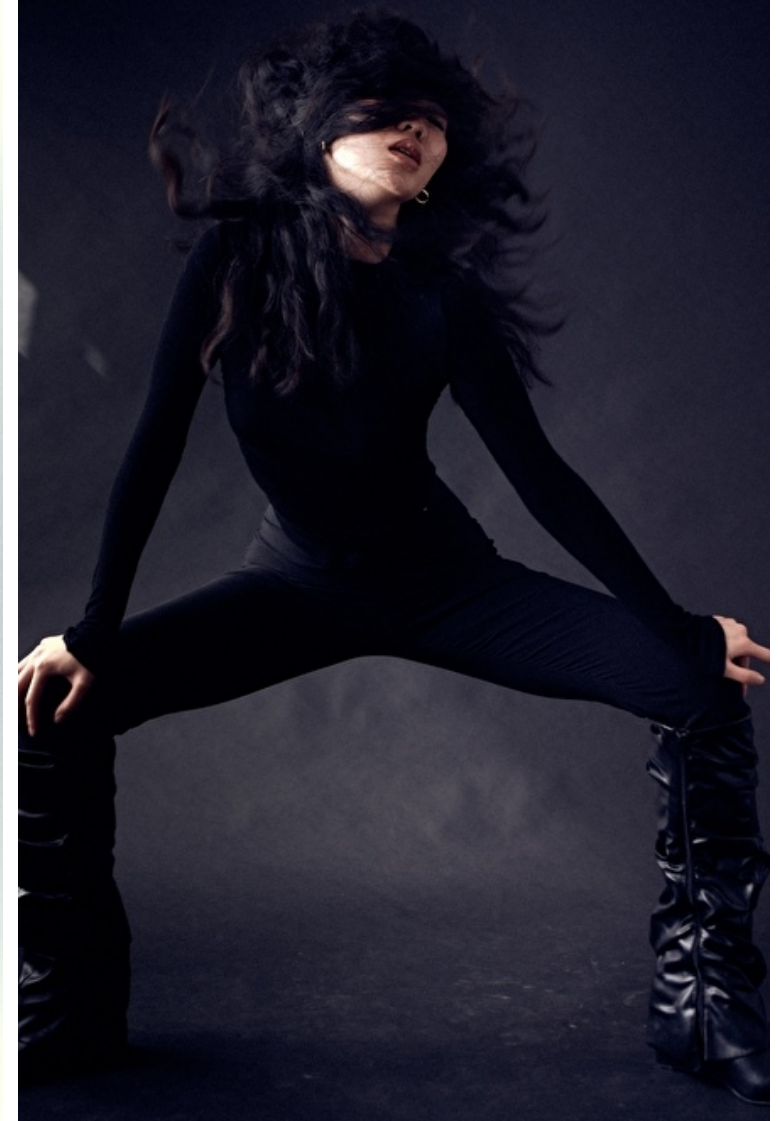
Shoes EU/US/UK 39 / 8 / 6

Eyes Brown

Hair Black

Cup B

Location LONDON



# Select

MODEL MANAGEMENT

2nd floor, 77 ST. Martins Lane, London, 00000, England, United Kingdom

Phone: +44 20 7299 1300 Fax: +44 20 7299 1385 Email: [info@selectmodel.com](mailto:info@selectmodel.com) Website: <https://www.selectmodel.com/>

## DORRIT Li

Height 177cm / 5' 9.5"

Size EU/US 34 / 4

Bust 80cm / 31.5"

Waist 62cm / 24.5"

Hips 91cm / 36"

Shoes EU/US/UK 39 / 8 / 6

Eyes Brown

Hair Black

Cup B

Location LONDON



## DORRIT Li

Height 177cm / 5' 9.5"

Size EU/US 34 / 4

Bust 80cm / 31.5"

Waist 62cm / 24.5"

Hips 91cm / 36"

Shoes EU/US/UK 39 / 8 / 6

Eyes Brown

Hair Black

Cup B

Location LONDON



# Select

MODEL MANAGEMENT

2nd floor, 77 ST. Martins Lane, London, 00000, England, United Kingdom

Phone: +44 20 7299 1300 Fax: +44 20 7299 1385 Email: [info@selectmodel.com](mailto:info@selectmodel.com) Website: <https://www.selectmodel.com/>

## DORRIT Li

Height 177cm / 5' 9.5"

Size EU/US 34 / 4

Bust 80cm / 31.5"

Waist 62cm / 24.5"

Hips 91cm / 36"

Shoes EU/US/UK 39 / 8 / 6

Eyes Brown

Hair Black

Cup B

Location LONDON



## DORRIT Li

Height 177cm / 5' 9.5"

Size EU/US 34 / 4

Bust 80cm / 31.5"

Waist 62cm / 24.5"

Hips 91cm / 36"

Shoes EU/US/UK 39 / 8 / 6

Eyes Brown

Hair Black

Cup B

Location LONDON



# Select

MODEL MANAGEMENT

2nd floor, 77 ST. Martins Lane, London, 00000, England, United Kingdom  
**Phone:** +44 20 7299 1300 **Fax:** +44 20 7299 1385 **Email:** info@selectmodel.com **Website:** https://www.selectmodel.com/

## DORRIT Li

Height 177cm / 5' 9.5"

Size EU/US 34 / 4

Bust 80cm / 31.5"

Waist 62cm / 24.5"

Hips 91cm / 36"

Shoes EU/US/UK 39 / 8 / 6

Eyes Brown

Hair Black

Cup B

Location LONDON



# Select

MODEL MANAGEMENT

2nd floor, 77 ST. Martins Lane, London, 00000, England, United Kingdom

Phone: +44 20 7299 1300 Fax: +44 20 7299 1385 Email: [info@selectmodel.com](mailto:info@selectmodel.com) Website: <https://www.selectmodel.com/>

## DORRIT Li

Height 177cm / 5' 9.5"

Size EU/US 34 / 4

Bust 80cm / 31.5"

Waist 62cm / 24.5"

Hips 91cm / 36"

Shoes EU/US/UK 39 / 8 / 6

Eyes Brown

Hair Black

Cup B

Location LONDON



# Select

MODEL MANAGEMENT

2nd floor, 77 ST. Martins Lane, London, 00000, England, United Kingdom  
Phone: +44 20 7299 1300 Fax: +44 20 7299 1385 Email: info@selectmodel.com Website: <https://www.selectmodel.com/>

## DORRIT Li

Height 177cm / 5' 9.5"

Size EU/US 34 / 4

Bust 80cm / 31.5"

Waist 62cm / 24.5"

Hips 91cm / 36"

Shoes EU/US/UK 39 / 8 / 6

Eyes Brown

Hair Black

Cup B

Location LONDON



# Select

MODEL MANAGEMENT

2nd floor, 77 ST. Martins Lane, London, 00000, England, United Kingdom

Phone: +44 20 7299 1300 Fax: +44 20 7299 1385 Email: [info@selectmodel.com](mailto:info@selectmodel.com) Website: <https://www.selectmodel.com/>

## DORRIT Li

Height 177cm / 5' 9.5"

Size EU/US 34 / 4

Bust 80cm / 31.5"

Waist 62cm / 24.5"

Hips 91cm / 36"

Shoes EU/US/UK 39 / 8 / 6

Eyes Brown

Hair Black

Cup B

Location LONDON



# Select

MODEL MANAGEMENT

2nd floor, 77 ST. Martins Lane, London, 00000, England, United Kingdom

Phone: +44 20 7299 1300 Fax: +44 20 7299 1385 Email: [info@selectmodel.com](mailto:info@selectmodel.com) Website: <https://www.selectmodel.com/>

## DORRIT Li

Height 177cm / 5' 9.5"

Size EU/US 34 / 4

Bust 80cm / 31.5"

Waist 62cm / 24.5"

Hips 91cm / 36"

Shoes EU/US/UK 39 / 8 / 6

Eyes Brown

Hair Black

Cup B

Location LONDON



## DORRIT Li

Height 177cm / 5' 9.5"

Size EU/US 34 / 4

Bust 80cm / 31.5"

Waist 62cm / 24.5"

Hips 91cm / 36"

Shoes EU/US/UK 39 / 8 / 6

Eyes Brown

Hair Black

Cup B

Location LONDON



# Select

MODEL MANAGEMENT

2nd floor, 77 ST. Martins Lane, London, 00000, England, United Kingdom

Phone: +44 20 7299 1300 Fax: +44 20 7299 1385 Email: [info@selectmodel.com](mailto:info@selectmodel.com) Website: <https://www.selectmodel.com/>

## DORRIT Li

Height 177cm / 5' 9.5"

Size EU/US 34 / 4

Bust 80cm / 31.5"

Waist 62cm / 24.5"

Hips 91cm / 36"

Shoes EU/US/UK 39 / 8 / 6

Eyes Brown

Hair Black

Cup B

Location LONDON



## DORRIT Li

Height 177cm / 5' 9.5"

Size EU/US 34 / 4

Bust 80cm / 31.5"

Waist 62cm / 24.5"

Hips 91cm / 36"

Shoes EU/US/UK 39 / 8 / 6

Eyes Brown

Hair Black

Cup B

Location LONDON



# Select

MODEL MANAGEMENT

2nd floor, 77 ST. Martins Lane, London, 00000, England, United Kingdom

Phone: +44 20 7299 1300 Fax: +44 20 7299 1385 Email: info@selectmodel.com Website: <https://www.selectmodel.com/>

## DORRIT Li

Height 177cm / 5' 9.5"

Size EU/US 34 / 4

Bust 80cm / 31.5"

Waist 62cm / 24.5"

Hips 91cm / 36"

Shoes EU/US/UK 39 / 8 / 6

Eyes Brown

Hair Black

Cup B

Location LONDON

