

JOE MORELINE

Height 185cm / 6' 1.0"

Chest 96cm / 38"

Waist 81cm / 32"

Shoes EU/US/UK 45.5 / 12.5 / 10.5

Inseam 81cm / 32"

Suit size 48cm / 38"

Suit cut Regular

Hair Blond

Hair length 3

Eyes Blue



JOE MORELINE

Height 185cm / 6' 1.0"

Chest 96cm / 38"

Waist 81cm / 32"

Shoes EU/US/UK 45.5 / 12.5 /
10.5

Inseam 81cm / 32"

Suit size 48cm / 38"

Suit cut Regular

Hair Blond

Hair length 3

Eyes Blue



JOE MORELINE

Height 185cm / 6' 1.0"

Chest 96cm / 38"

Waist 81cm / 32"

Shoes EU/US/UK 45.5 / 12.5 /
10.5

Inseam 81cm / 32"

Suit size 48cm / 38"

Suit cut Regular

Hair Blond

Hair length 3

Eyes Blue



JOE MORELINE

Height 185cm / 6' 1.0"

Chest 96cm / 38"

Waist 81cm / 32"

Shoes EU/US/UK 45.5 / 12.5 / 10.5

Inseam 81cm / 32"

Suit size 48cm / 38"

Suit cut Regular

Hair Blond

Hair length 3

Eyes Blue



JOE MORELINE

Height 185cm / 6' 1.0"

Chest 96cm / 38"

Waist 81cm / 32"

Shoes EU/US/UK 45.5 / 12.5 /
10.5

Inseam 81cm / 32"

Suit size 48cm / 38"

Suit cut Regular

Hair Blond

Hair length 3

Eyes Blue



JOE MORELINE

Height 185cm / 6' 1.0"

Chest 96cm / 38"

Waist 81cm / 32"

Shoes EU/US/UK 45.5 / 12.5 /
10.5

Inseam 81cm / 32"

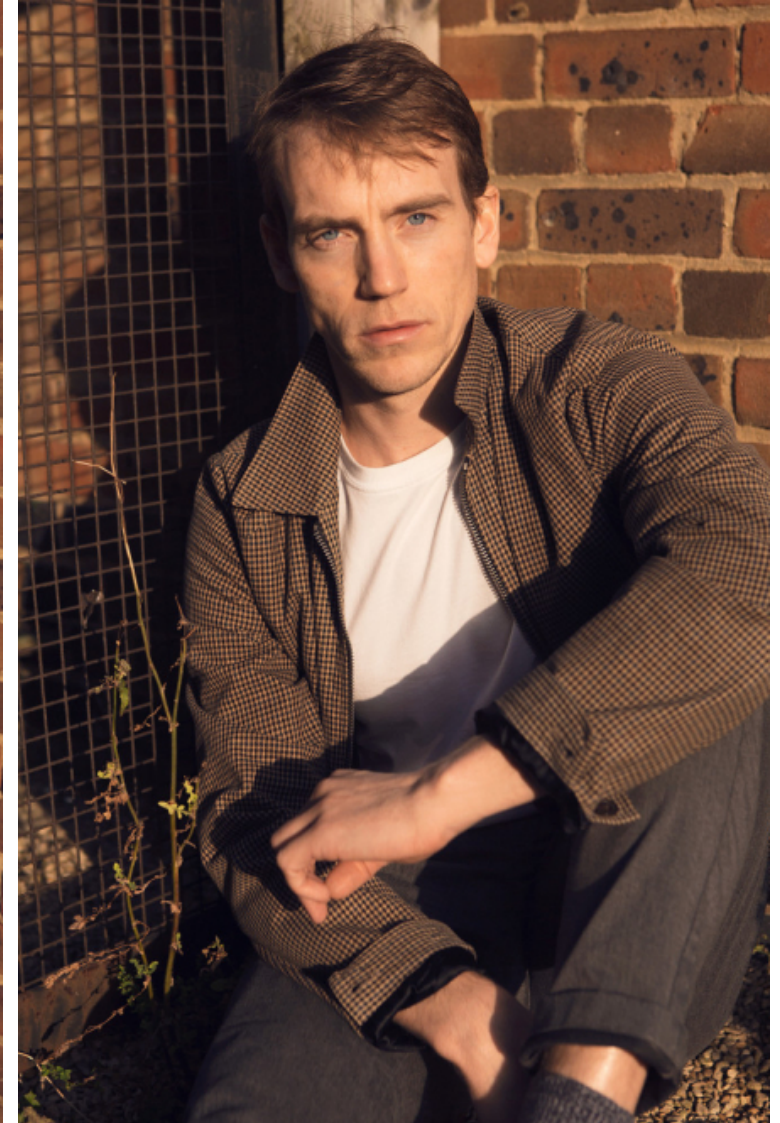
Suit size 48cm / 38"

Suit cut Regular

Hair Blond

Hair length 3

Eyes Blue



JOE MORELINE

Height 185cm / 6' 1.0"

Chest 96cm / 38"

Waist 81cm / 32"

Shoes EU/US/UK 45.5 / 12.5 /
10.5

Inseam 81cm / 32"

Suit size 48cm / 38"

Suit cut Regular

Hair Blond

Hair length 3

Eyes Blue



Select

MODEL MANAGEMENT

2nd floor, 77 ST. Martins Lane (entrance on Cranbourn Street) , London, WC2N 4AA, England, United Kingdom
Phone: +44 (0) 20 7299 1322 **Fax:** +44 (0) 20 7299 1386 **Email:** info@selectmodel.com **Website:** https://www.selectmodel.com/

JOE MORELINE

Height 185cm / 6' 1.0"

Chest 96cm / 38"

Waist 81cm / 32"

Shoes EU/US/UK 45.5 / 12.5 /
10.5

Inseam 81cm / 32"

Suit size 48cm / 38"

Suit cut Regular

Hair Blond

Hair length 3

Eyes Blue



JOE MORELINE

Height 185cm / 6' 1.0"

Chest 96cm / 38"

Waist 81cm / 32"

Shoes EU/US/UK 45.5 / 12.5 /
10.5

Inseam 81cm / 32"

Suit size 48cm / 38"

Suit cut Regular

Hair Blond

Hair length 3

Eyes Blue



JOE MORELINE

Height 185cm / 6' 1.0"

Chest 96cm / 38"

Waist 81cm / 32"

Shoes EU/US/UK 45.5 / 12.5 /
10.5

Inseam 81cm / 32"

Suit size 48cm / 38"

Suit cut Regular

Hair Blond

Hair length 3

Eyes Blue



Select

MODEL MANAGEMENT

2nd floor, 77 ST. Martins Lane (entrance on Cranbourn Street) , London, WC2N 4AA, England, United Kingdom
Phone: +44 (0) 20 7299 1322 **Fax:** +44 (0) 20 7299 1386 **Email:** info@selectmodel.com **Website:** https://www.selectmodel.com/

JOE MORELINE

Height 185cm / 6' 1.0"

Chest 96cm / 38"

Waist 81cm / 32"

Shoes EU/US/UK 45.5 / 12.5 /
10.5

Inseam 81cm / 32"

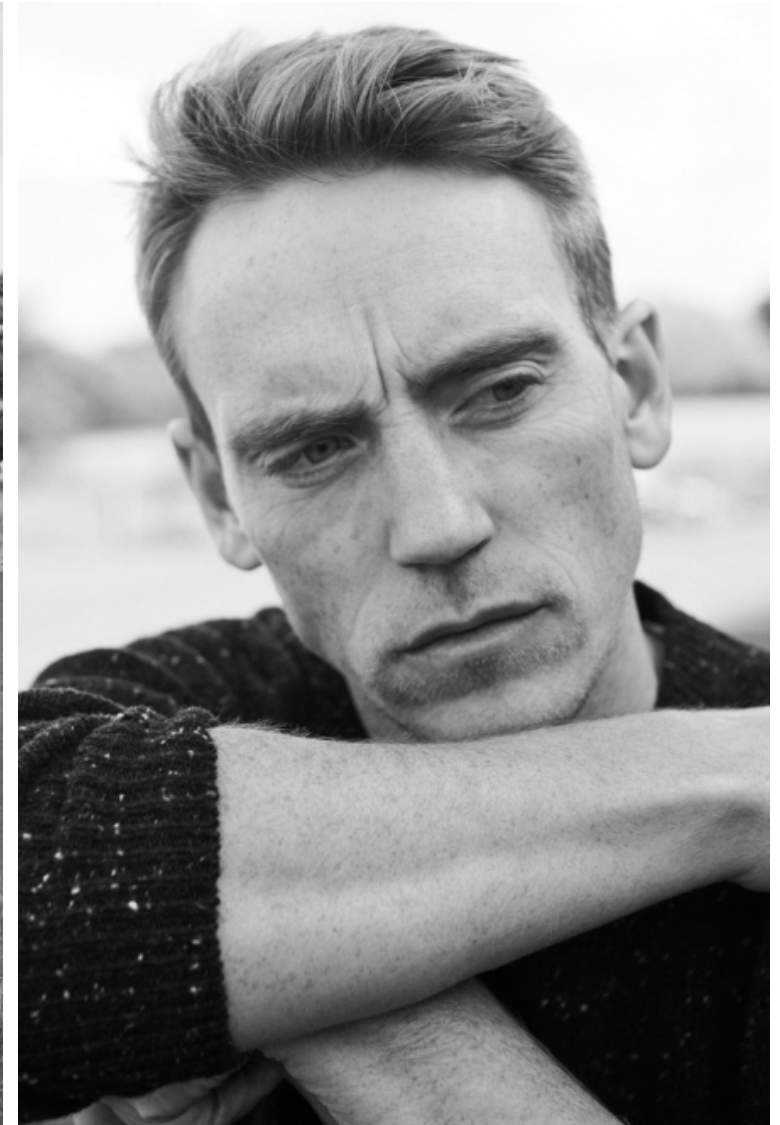
Suit size 48cm / 38"

Suit cut Regular

Hair Blond

Hair length 3

Eyes Blue



Select

MODEL MANAGEMENT

2nd floor, 77 ST. Martins Lane (entrance on Cranbourn Street) , London, WC2N 4AA, England, United Kingdom
Phone: +44 (0) 20 7299 1322 **Fax:** +44 (0) 20 7299 1386 **Email:** info@selectmodel.com **Website:** https://www.selectmodel.com/

JOE MORELINE

Height 185cm / 6' 1.0"

Chest 96cm / 38"

Waist 81cm / 32"

Shoes EU/US/UK 45.5 / 12.5 /
10.5

Inseam 81cm / 32"

Suit size 48cm / 38"

Suit cut Regular

Hair Blond

Hair length 3

Eyes Blue



JOE MORELINE

Height 185cm / 6' 1.0"

Chest 96cm / 38"

Waist 81cm / 32"

Shoes EU/US/UK 45.5 / 12.5 /
10.5

Inseam 81cm / 32"

Suit size 48cm / 38"

Suit cut Regular

Hair Blond

Hair length 3

Eyes Blue



JOE MORELINE

Height 185cm / 6' 1.0"

Chest 96cm / 38"

Waist 81cm / 32"

Shoes EU/US/UK 45.5 / 12.5 / 10.5

Inseam 81cm / 32"

Suit size 48cm / 38"

Suit cut Regular

Hair Blond

Hair length 3

Eyes Blue



LINKS: Mantel: Belstaff, circa 900 Euro; Pullover: Conati, circa 350 Euro; Hemd: Dior, circa 50 Euro; Hose: Dolce, ab 150 Euro; Socken: Falke Airport, circa 20 Euro; Schuhe: Fiora von Bommel, circa 240 Euro; Weekender: Montblanc, circa 1.500 Euro

RECHTS: Anzug: Paul Smith, circa 1.450 Euro; Einstecktasche: Penrose Lottow, circa 55 Euro; Hemd: Ralph Lauren, circa 110 Euro; Krautstiefel: Seldensticker, circa 50 Euro; Kniestrümpfe: Item 606, circa 40 Euro; Schuhe: Giorgio Armani, circa 900 Euro