

JOSH LUDLOW

Height 180cm / 5' 11.0"

Chest 91cm / 36"

Waist 80cm / 31.5"

Shoes EU/US/UK 43.5 / 10.5 / 9

Inseam 75cm / 29.5"

Neck 37cm / 14.5"

Hair Dark brown

Hair length 4

Eyes Blue



Select

MODEL MANAGEMENT

2nd floor, 77 ST. Martins Lane (entrance on Cranbourn Street) , London, WC2N 4AA, England, United Kingdom
Phone: +44 (0) 20 7299 1322 **Fax:** +44 (0) 20 7299 1386 **Email:** info@selectmodel.com **Website:** https://www.selectmodel.com/

JOSH LUDLOW

Height 180cm / 5' 11.0"

Chest 91cm / 36"

Waist 80cm / 31.5"

Shoes EU/US/UK 43.5 / 10.5 / 9

Inseam 75cm / 29.5"

Neck 37cm / 14.5"

Hair Dark brown

Hair length 4

Eyes Blue



JOSH LUDLOW

Height 180cm / 5' 11.0"

Chest 91cm / 36"

Waist 80cm / 31.5"

Shoes EU/US/UK 43.5 / 10.5 / 9

Inseam 75cm / 29.5"

Neck 37cm / 14.5"

Hair Dark brown

Hair length 4

Eyes Blue



Select

MODEL MANAGEMENT

2nd floor, 77 ST. Martins Lane (entrance on Cranbourn Street) , London, WC2N 4AA, England, United Kingdom
Phone: +44 (0) 20 7299 1322 **Fax:** +44 (0) 20 7299 1386 **Email:** info@selectmodel.com **Website:** https://www.selectmodel.com/

JOSH LUDLOW

Height 180cm / 5' 11.0"

Chest 91cm / 36"

Waist 80cm / 31.5"

Shoes EU/US/UK 43.5 / 10.5 / 9

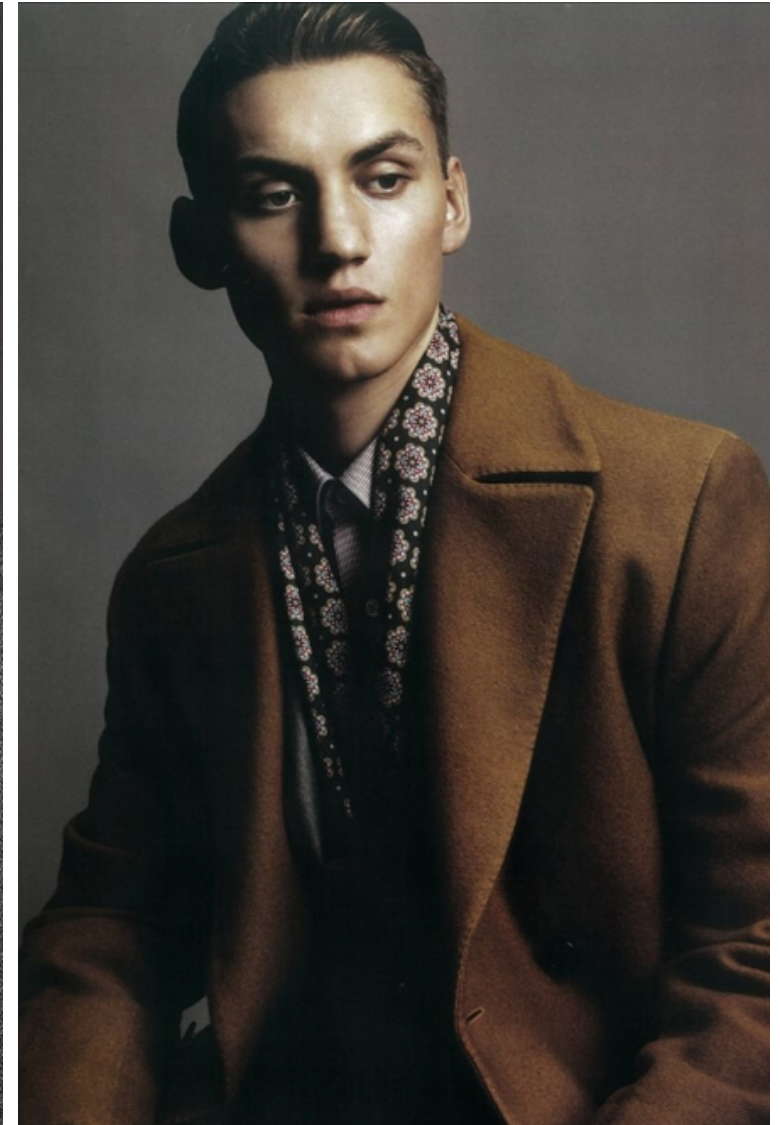
Inseam 75cm / 29.5"

Neck 37cm / 14.5"

Hair Dark brown

Hair length 4

Eyes Blue



Select

MODEL MANAGEMENT

2nd floor, 77 ST. Martins Lane (entrance on Cranbourn Street) , London, WC2N 4AA, England, United Kingdom
Phone: +44 (0) 20 7299 1322 **Fax:** +44 (0) 20 7299 1386 **Email:** info@selectmodel.com **Website:** https://www.selectmodel.com/

JOSH LUDLOW

Height 180cm / 5' 11.0"

Chest 91cm / 36"

Waist 80cm / 31.5"

Shoes EU/US/UK 43.5 / 10.5 / 9

Inseam 75cm / 29.5"

Neck 37cm / 14.5"

Hair Dark brown

Hair length 4

Eyes Blue



Select

MODEL MANAGEMENT

2nd floor, 77 ST. Martins Lane (entrance on Cranbourn Street) , London, WC2N 4AA, England, United Kingdom
Phone: +44 (0) 20 7299 1322 **Fax:** +44 (0) 20 7299 1386 **Email:** info@selectmodel.com **Website:** https://www.selectmodel.com/

JOSH LUDLOW

Height 180cm / 5' 11.0"

Chest 91cm / 36"

Waist 80cm / 31.5"

Shoes EU/US/UK 43.5 / 10.5 / 9

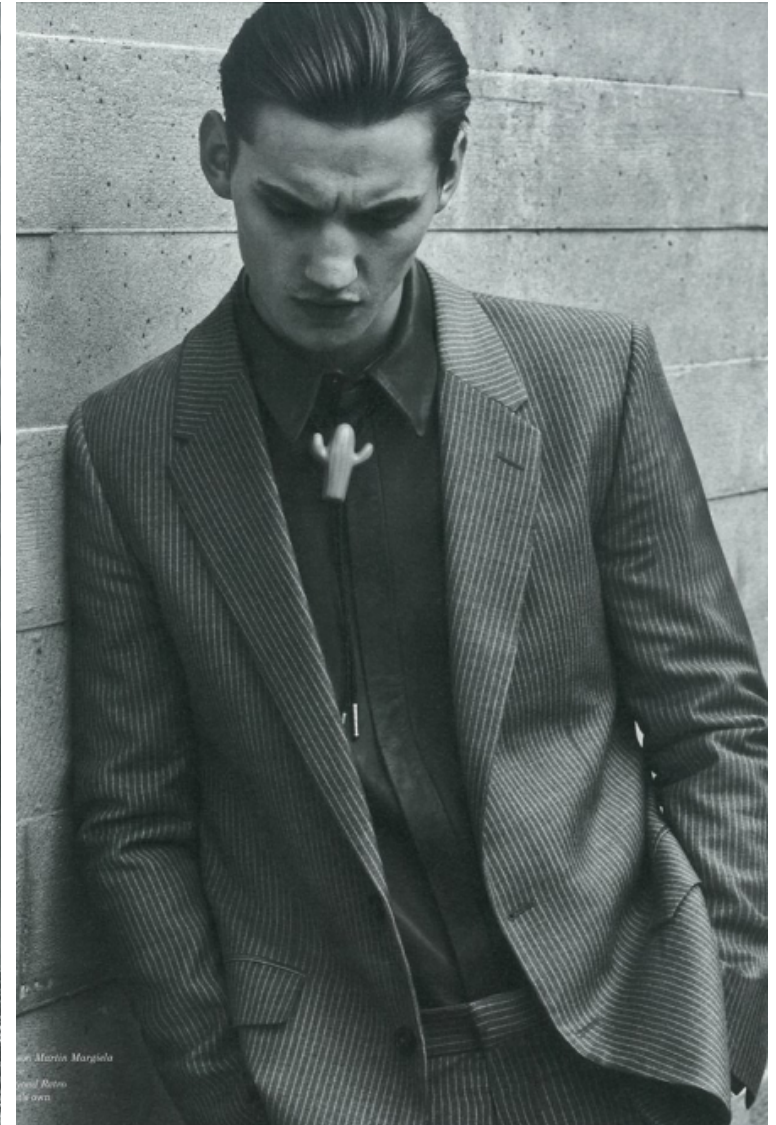
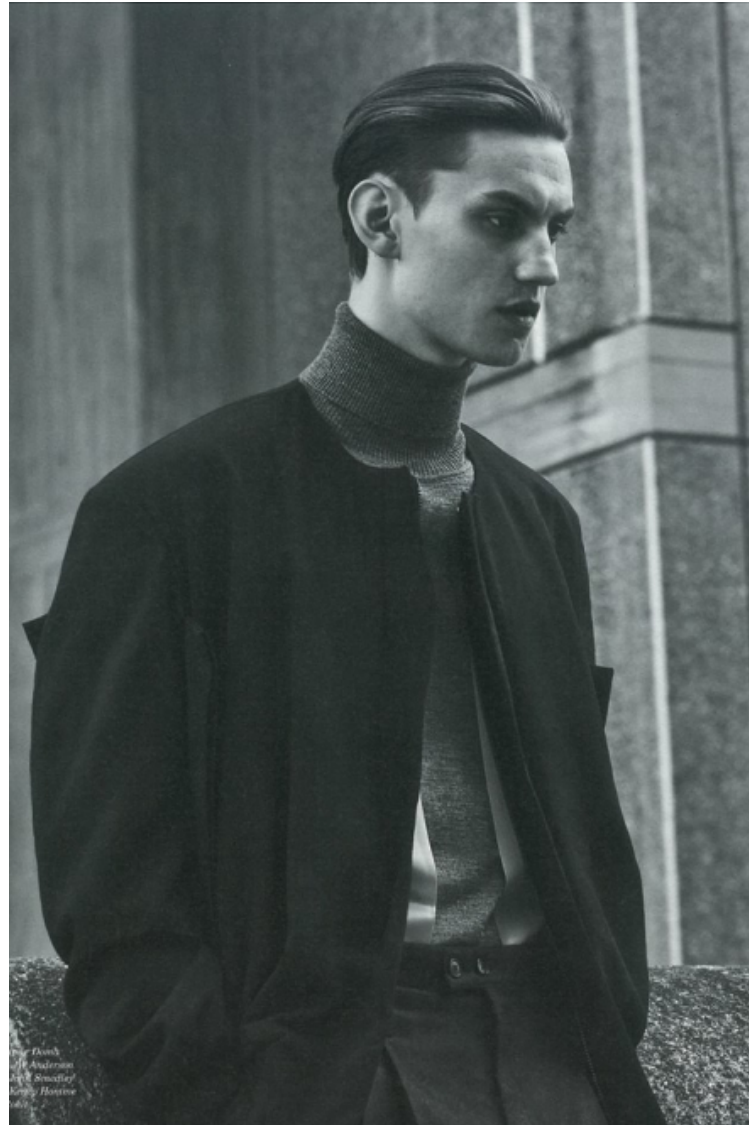
Inseam 75cm / 29.5"

Neck 37cm / 14.5"

Hair Dark brown

Hair length 4

Eyes Blue



Select

MODEL MANAGEMENT

2nd floor, 77 ST. Martins Lane (entrance on Cranbourn Street) , London, WC2N 4AA, England, United Kingdom
Phone: +44 (0) 20 7299 1322 **Fax:** +44 (0) 20 7299 1386 **Email:** info@selectmodel.com **Website:** https://www.selectmodel.com/

JOSH LUDLOW

Height 180cm / 5' 11.0"

Chest 91cm / 36"

Waist 80cm / 31.5"

Shoes EU/US/UK 43.5 / 10.5 / 9

Inseam 75cm / 29.5"

Neck 37cm / 14.5"

Hair Dark brown

Hair length 4

Eyes Blue



JOSH LUDLOW

Height 180cm / 5' 11.0"

Chest 91cm / 36"

Waist 80cm / 31.5"

Shoes EU/US/UK 43.5 / 10.5 / 9

Inseam 75cm / 29.5"

Neck 37cm / 14.5"

Hair Dark brown

Hair length 4

Eyes Blue

© 2008, Select for
and, Visit by Body
and, Success by
to, Glamour by Sandra,
and by the Museum

**Josh
MCLELLAN**

A MUSIC MAKER, JOHN MCLENNAN
BEGAN HIS MODELING CAREER BY
DOING SOME SHOOTS WITH ALAS-
DAIR MCLELLAN, "AND IT WENT FROM
THERE."

Aside from modelling, what are you interested in?
Music, travel, bikes, graffiti and Japanese
food! *If you weren't a model, what would you
be doing?* When not modeling, I make music.
How would you describe your off-duty style?
Scruffy toddler. *Who is your favourite design-
er/label?* Liking supreme for these jackets and
Edwin are making really nice jeans. *Who is
your style icon?* Aladdin and terminator, not
necessarily mixed together. *Which campaign
would you most like to be the face of?* Well that
depends on the terms. *Who would you love to
be photographed by who you haven't yet?*
I like to see how the old school guys work
and what gear they use. *What has been your
most exciting job?* The early campaigns I did.
*More recently, it was nice to go and shoot in
LA with my girlfriend, I love it there. Tell me
something interesting about yourself.*
I just got back from a months tour in Ameri-
ca. *What do you prefer, catwalk or shoot?*
Shoots. *Do you have a studio? Studio? Primate
Me Me or chocolate Me Me? I'd go for peanut
butter Me Me over both of them Do you
follow anyone?* My Girlfriend says Vogue.
*What's about it. How being a model made you
more fashion aware?* Awareness maybe, not more
fashionable though. *If you could be anyone else
for a day, who would you be?* Any one working
in the international space station. *Tea or cof-
fee?* Coffee in the moon, tea before bed. *What
is your beauty regime?* Sleep for more than 6
hours before a job.

11 / 002

