

# Select

MODEL MANAGEMENT

2nd floor, 77 ST. Martins Lane, London, 00000, England, United Kingdom  
**Phone:** +44 20 7299 1300 **Fax:** +44 20 7299 1385 **Email:** info@selectmodel.com **Website:** <https://www.selectmodel.com/>

## LILAH PARSONS

Height 178cm / 5' 10.0"

Size EU/US 36 / 6

Waist 66cm / 26"

Hips 92cm / 36"

Shoes EU/US/UK 39 / 8 / 6



# Select

MODEL MANAGEMENT

2nd floor, 77 ST. Martins Lane, London, 00000, England, United Kingdom

Phone: +44 20 7299 1300 Fax: +44 20 7299 1385 Email: [info@selectmodel.com](mailto:info@selectmodel.com) Website: <https://www.selectmodel.com/>

## LILAH PARSONS

Height 178cm / 5' 10.0"

Size EU/US 36 / 6

Waist 66cm / 26"

Hips 92cm / 36"

Shoes EU/US/UK 39 / 8 / 6



## LILAH PARSONS

Height 178cm / 5' 10.0"

Size EU/US 36 / 6

Waist 66cm / 26"

Hips 92cm / 36"

Shoes EU/US/UK 39 / 8 / 6

# RADIO DAYS

*The model and TV presenter now rules the airwaves. Give it up for our new favourite IT girl Lilah Parsons*

Lilah Parsons is guaranteed to make you smile from the moment you meet her – her big grin and laugh are truly infectious, and that's even before she starts tickling you with her tales (read on for the one about the random hair curler).

Having loved fashion from a young age, Lilah followed her heart and applied to study a degree in fashion styling and photography at the prestigious London College Of Fashion. She was accepted, but decided to postpone her start date when she was scouted at a party, and signed up by a modelling agency. Within six weeks, she was shooting for Chanel and walking for Vivienne Westwood.

Following a successful modelling career, Lilah, 27, was lured to the world of broadcasting, presenting on independent radio station Hoxton Radio as well as a weekly chart show for MTV. Honing her new skills behind the microphone, she was soon poached by Capital FM to team up with long-standing radio host Dave Berry and former Union J singer George Shelley to form the latest breakfast show team in January this year. Fast forward eight months and Lilah is loving where her career is taking her, saying: "If someone had told me this time last year that I'd be presenting on London's biggest commercial breakfast show, I wouldn't have believed them! But I truly am having the best time." We think it's time to find out more...

### **How are you enjoying Capital Breakfast?**

Capital FM is in another league! It's my dream job. My first day was 25 January, but it has gone really fast and it's been incredible. I'm really enjoying it and

6 | SEPTEMBER 2016 | very.co.uk



Lost Ink  
Alicia Frit And  
Feather Dress  
KJWQ | 46

very.co.uk | SEPTEMBER 2016 | 7

# Select

MODEL MANAGEMENT

2nd floor, 77 ST. Martins Lane, London, 00000, England, United Kingdom  
**Phone:** +44 20 7299 1300 **Fax:** +44 20 7299 1385 **Email:** info@selectmodel.com **Website:** https://www.selectmodel.com/

## LILAH PARSONS

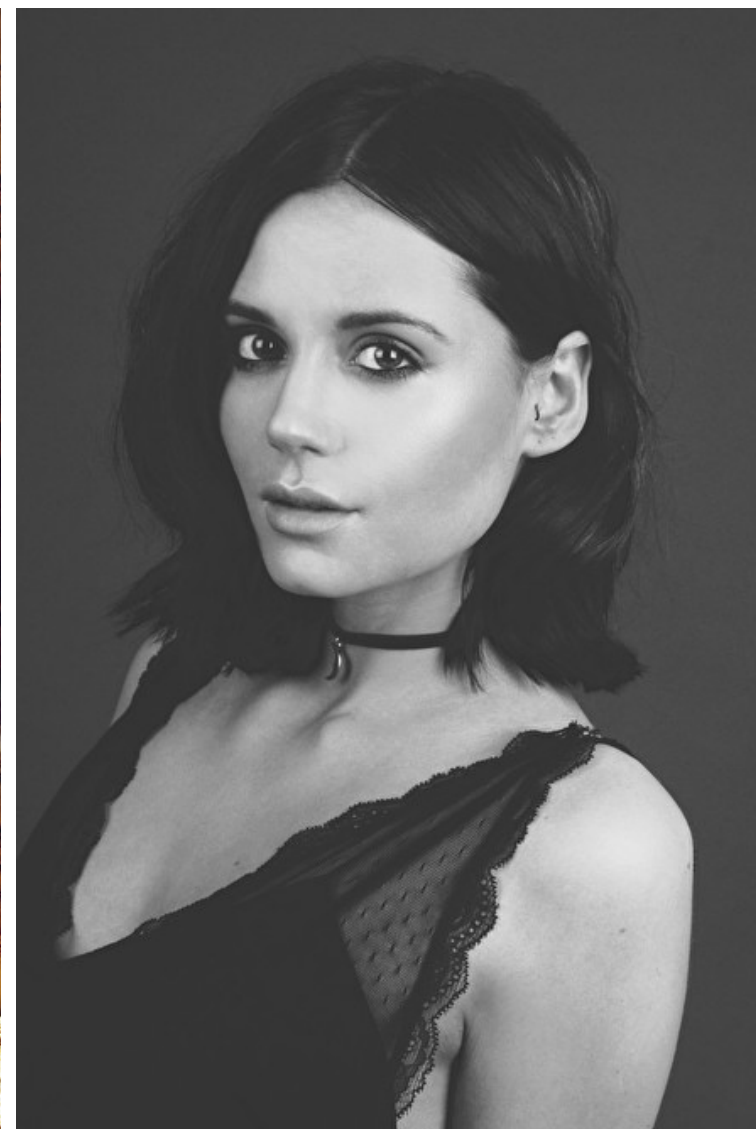
Height 178cm / 5' 10.0"

Size EU/US 36 / 6

Waist 66cm / 26"

Hips 92cm / 36"

Shoes EU/US/UK 39 / 8 / 6



# Select

MODEL MANAGEMENT

2nd floor, 77 ST. Martins Lane, London, 00000, England, United Kingdom  
Phone: +44 20 7299 1300 Fax: +44 20 7299 1385 Email: info@selectmodel.com Website: https://www.selectmodel.com/

## LILAH PARSONS

Height 178cm / 5' 10.0"

Size EU/US 36 / 6

Waist 66cm / 26"

Hips 92cm / 36"

Shoes EU/US/UK 39 / 8 / 6



V By Very Long Sleeve Silk  
Maxi Dress, K7DVF, 1.6m  
Miss Selfridge, Woodson  
Platform Ankle Tie  
Sneaker, 73T9F, 1.42

## LILAH PARSONS

Height 178cm / 5' 10.0"

Size EU/US 36 / 6

Waist 66cm / 26"

Hips 92cm / 36"

Shoes EU/US/UK 39 / 8 / 6

