

LUKE STOREY

Height 192cm / 6' 3.5"

Chest 101cm / 40"

Waist 88cm / 34.5"

Shoes EU/US/UK 45 / 12 / 10.5

Inseam 76cm / 30"

Neck 39cm / 15.5"

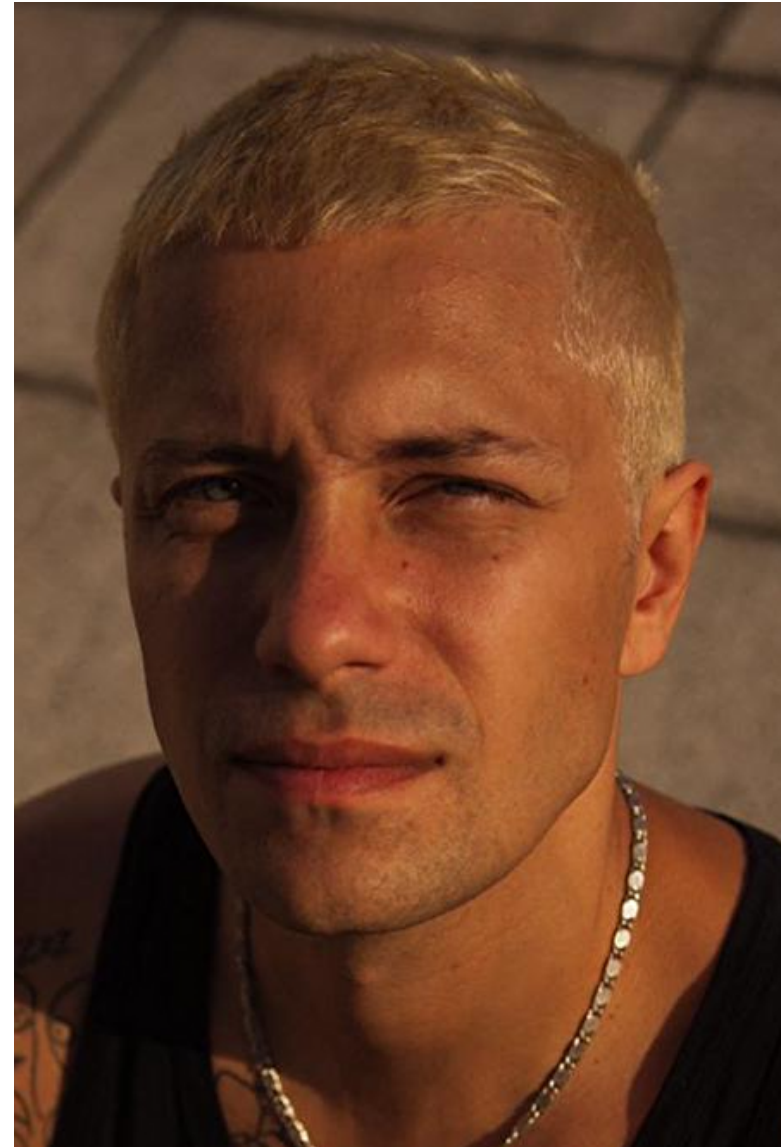
Eyes Blue

Hair Light brown

Suit size 50cm / 40"

Suit cut Regular

Hair length 4



LUKE STOREY

Height 192cm / 6' 3.5"

Chest 101cm / 40"

Waist 88cm / 34.5"

Shoes EU/US/UK 45 / 12 / 10.5

Inseam 76cm / 30"

Neck 39cm / 15.5"

Eyes Blue

Hair Light brown

Suit size 50cm / 40"

Suit cut Regular

Hair length 4



LUKE STOREY

Height 192cm / 6' 3.5"

Chest 101cm / 40"

Waist 88cm / 34.5"

Shoes EU/US/UK 45 / 12 / 10.5

Inseam 76cm / 30"

Neck 39cm / 15.5"

Eyes Blue

Hair Light brown

Suit size 50cm / 40"

Suit cut Regular

Hair length 4



LUKE STOREY

Height 192cm / 6' 3.5"

Chest 101cm / 40"

Waist 88cm / 34.5"

Shoes EU/US/UK 45 / 12 / 10.5

Inseam 76cm / 30"

Neck 39cm / 15.5"

Eyes Blue

Hair Light brown

Suit size 50cm / 40"

Suit cut Regular

Hair length 4



LUKE STOREY

Height 192cm / 6' 3.5"

Chest 101cm / 40"

Waist 88cm / 34.5"

Shoes EU/US/UK 45 / 12 / 10.5

Inseam 76cm / 30"

Neck 39cm / 15.5"

Eyes Blue

Hair Light brown

Suit size 50cm / 40"

Suit cut Regular

Hair length 4



LUKE STOREY

Height 192cm / 6' 3.5"

Chest 101cm / 40"

Waist 88cm / 34.5"

Shoes EU/US/UK 45 / 12 / 10.5

Inseam 76cm / 30"

Neck 39cm / 15.5"

Eyes Blue

Hair Light brown

Suit size 50cm / 40"

Suit cut Regular

Hair length 4



LUKE STOREY

Height 192cm / 6' 3.5"

Chest 101cm / 40"

Waist 88cm / 34.5"

Shoes EU/US/UK 45 / 12 / 10.5

Inseam 76cm / 30"

Neck 39cm / 15.5"

Eyes Blue

Hair Light brown

Suit size 50cm / 40"

Suit cut Regular

Hair length 4



LUKE STOREY

Height 192cm / 6' 3.5"

Chest 101cm / 40"

Waist 88cm / 34.5"

Shoes EU/US/UK 45 / 12 / 10.5

Inseam 76cm / 30"

Neck 39cm / 15.5"

Eyes Blue

Hair Light brown

Suit size 50cm / 40"

Suit cut Regular

Hair length 4



LUKE STOREY

Height 192cm / 6' 3.5"

Chest 101cm / 40"

Waist 88cm / 34.5"

Shoes EU/US/UK 45 / 12 / 10.5

Inseam 76cm / 30"

Neck 39cm / 15.5"

Eyes Blue

Hair Light brown

Suit size 50cm / 40"

Suit cut Regular

Hair length 4



LUKE STOREY

Height 192cm / 6' 3.5"

Chest 101cm / 40"

Waist 88cm / 34.5"

Shoes EU/US/UK 45 / 12 / 10.5

Inseam 76cm / 30"

Neck 39cm / 15.5"

Eyes Blue

Hair Light brown

Suit size 50cm / 40"

Suit cut Regular

Hair length 4



LUKE STOREY

Height 192cm / 6' 3.5"

Chest 101cm / 40"

Waist 88cm / 34.5"

Shoes EU/US/UK 45 / 12 / 10.5

Inseam 76cm / 30"

Neck 39cm / 15.5"

Eyes Blue

Hair Light brown

Suit size 50cm / 40"

Suit cut Regular

Hair length 4



LUKE STOREY

Height 192cm / 6' 3.5"

Chest 101cm / 40"

Waist 88cm / 34.5"

Shoes EU/US/UK 45 / 12 / 10.5

Inseam 76cm / 30"

Neck 39cm / 15.5"

Eyes Blue

Hair Light brown

Suit size 50cm / 40"

Suit cut Regular

Hair length 4



Select

MODEL MANAGEMENT

2nd floor, 77 ST. Martins Lane (entrance on Cranbourn Street) , London, WC2N 4AA, England, United Kingdom
Phone: +44 (0) 20 7299 1322 Fax: +44 (0) 20 7299 1386 Email: info@selectmodel.com Website: https://www.selectmodel.com/

LUKE STOREY

Height 192cm / 6' 3.5"

Chest 101cm / 40"

Waist 88cm / 34.5"

Shoes EU/US/UK 45 / 12 / 10.5

Inseam 76cm / 30"

Neck 39cm / 15.5"

Eyes Blue

Hair Light brown

Suit size 50cm / 40"

Suit cut Regular

Hair length 4



IG KONG 5/5 18 KEEP YOUR MUTHAFUCKIN CHAKRAS OPEN VOL 5



You may have lost the battle but you have not lost the war.



Use this time to reflect on what you've done wrong... and what you've done right.

LUKE STOREY

Height 192cm / 6' 3.5"

Chest 101cm / 40"

Waist 88cm / 34.5"

Shoes EU/US/UK 45 / 12 / 10.5

Inseam 76cm / 30"

Neck 39cm / 15.5"

Eyes Blue

Hair Light brown

Suit size 50cm / 40"

Suit cut Regular

Hair length 4



Select

MODEL MANAGEMENT

2nd floor, 77 ST. Martins Lane (entrance on Cranbourn Street), London, WC2N 4AA, England, United Kingdom
Phone: +44 (0) 20 7299 1322 Fax: +44 (0) 20 7299 1386 Email: info@selectmodel.com Website: https://www.selectmodel.com/

LUKE STOREY

Height 192cm / 6' 3.5"

Chest 101cm / 40"

Waist 88cm / 34.5"

Shoes EU/US/UK 45 / 12 / 10.5

Inseam 76cm / 30"

Neck 39cm / 15.5"

Eyes Blue

Hair Light brown

Suit size 50cm / 40"

Suit cut Regular

Hair length 4



ML.COM - NEWS

Justin O'Shea, Brioni's creative director, has a pected look for a storied Italian fashion house know made-to-measure suits. O'Shea, a heavily tattooed buff man (he boxes almost every day) with a shave and full beard, could have been recruited from the pool of Fight Club. However, O'Shea's swagger is a reason Brioni brought him on board in early 2016 pressed on how his edgy aesthetic would trans the typical Brioni customer, O'Shea says, "I want t suits and shirts that can be worn by a dude on Wal or a fucking gangster appearing in Scorsese's *€* For Fall, O'Shea recruited heavy metal band Metz appear in Brioni's campaigns and switched the lo to one more evocative of Oktoberfest than Milan. Inspiration for the collection, O'Shea notes, " from the '70s, which is why, for example, there i shirts in the show as well as the new Continent with a broader, slightly padded shoulder that is t very much in at the waist." When asked, Why the disco, why now? O'Shea responds, "It was a tim fashion was greatly appreciated by others, when could be both ultra-masculine and at the same tin open about fashion." Speaking on his use of ex and leather, such as crocodile and chinchilla, *€* adds, "For me it's seeing people go, "Oh my god, a pimp," and it's the ultimate luxury."

But while O'Shea acknowledges his design t the past, he also has his eyes firmly set on the f menswear and hopes that his dressed up, but der devil-may-care attitude mixes things up. "It's like messing with something that's so formal and y your own spin on it, like there is no right or wron he says. On his own style, O'Shea is uncharacteri low-key given the larger-than-life image he has t for himself. "I'm pretty much a guy's guy," he dee wear suits all the time. That's why I took the job— quite literally, the perfect fit." *JA*

CLOTHING, SHOES, ACCESSORIES BRIONI

LUKE STOREY

Height 192cm / 6' 3.5"

Chest 101cm / 40"

Waist 88cm / 34.5"

Shoes EU/US/UK 45 / 12 / 10.5

Inseam 76cm / 30"

Neck 39cm / 15.5"

Eyes Blue

Hair Light brown

Suit size 50cm / 40"

Suit cut Regular

Hair length 4



LUKE STOREY

Height 192cm / 6' 3.5"

Chest 101cm / 40"

Waist 88cm / 34.5"

Shoes EU/US/UK 45 / 12 / 10.5

Inseam 76cm / 30"

Neck 39cm / 15.5"

Eyes Blue

Hair Light brown

Suit size 50cm / 40"

Suit cut Regular

Hair length 4

select
DEL MANAGEMENT
info@selectmodel.com

