

## LYS LORENTE

Height 180cm / 5' 11.0"

Bust 86cm / 34"

Hips 95cm / 37.5"

Waist 66cm / 26"

Shoes EU/US/UK 41 / 9.5 / 8

Size EU/US 34 / 4

Hair Light brown

Hair length 7

Eyes Green brown



## LYS LORENTE

Height 180cm / 5' 11.0"

Bust 86cm / 34"

Hips 95cm / 37.5"

Waist 66cm / 26"

Shoes EU/US/UK 41 / 9.5 / 8

Size EU/US 34 / 4

Hair Light brown

Hair length 7

Eyes Green brown



Jeune en laine, CÉDRIC CHARLIER. Chemise en soie, VICTORIA BECKHAM. Tee-shirt en coton, GUESS. Jupe plissée en laine, M...  
Bibi et sac, LOUIS VUIT



Modèle : Lys Lorente chez Premium Models. Coiffure : Mickaël Delmas chez Atomo Management. Maquillage : Sandrine Cano Boc...  
Assistante réalisation : Ewa Kluczenko. Production : Émilie Couput chez The Art Board. Casting : Nicolas Bianciotto chez The Art

## LYS LORENTE

Height 180cm / 5' 11.0"

Bust 86cm / 34"

Hips 95cm / 37.5"

Waist 66cm / 26"

Shoes EU/US/UK 41 / 9.5 / 8

Size EU/US 34 / 4

Hair Light brown

Hair length 7

Eyes Green brown



Veste et combinaison en laine et soie, et cravate, 1



## LYS LORENTE

Height 180cm / 5' 11.0"

Bust 86cm / 34"

Hips 95cm / 37.5"

Waist 66cm / 26"

Shoes EU/US/UK 41 / 9.5 / 8

Size EU/US 34 / 4

Hair Light brown

Hair length 7

Eyes Green brown



# Select

MODEL MANAGEMENT

2nd floor, 77 ST. Martins Lane, London, 00000, England, United Kingdom

Phone: +44 20 7299 1300 Fax: +44 20 7299 1385 Email: [info@selectmodel.com](mailto:info@selectmodel.com) Website: <https://www.selectmodel.com/>

## LYS LORENTE

Height 180cm / 5' 11.0"

Bust 86cm / 34"

Hips 95cm / 37.5"

Waist 66cm / 26"

Shoes EU/US/UK 41 / 9.5 / 8

Size EU/US 34 / 4

Hair Light brown

Hair length 7

Eyes Green brown



COUPE BAILENCIAGA,  
CHEMISE COPERNI,  
TOP GIVENCHY,  
BOUCLES D'ORÈSSE  
ET CHAUSSURES CHLOÉ,  
SAC BOTTIGA VENETA.

VANITY FAIR • SETTEMBRE

## LYS LORENTE

Height 180cm / 5' 11.0"

Bust 86cm / 34"

Hips 95cm / 37.5"

Waist 66cm / 26"

Shoes EU/US/UK 41 / 9.5 / 8

Size EU/US 34 / 4

Hair Light brown

Hair length 7

Eyes Green brown



Lys wears black draped top and black skirt GUCCI  
Black leather gloves BALENCIAGA black bodysuit and  
boots EMU WOLFBORN black leather boots L'ORÉAL

## LYS LORENTE

Height 180cm / 5' 11.0"

Bust 86cm / 34"

Hips 95cm / 37.5"

Waist 66cm / 26"

Shoes EU/US/UK 41 / 9.5 / 8

Size EU/US 34 / 4

Hair Light brown

Hair length 7

Eyes Green brown



ste en laine et satin, haut en georgette de soie et jupe en laine, CHLOÉ. Béret, ZIMMERMANN. Chaussettes, FALKE. Bottes, BOTTEGA VE



en laine, haut à pois à col volanté en nylonette et short en laine, MIU MIU.

## LYS LORENTE

Height 180cm / 5' 11.0"

Bust 86cm / 34"

Hips 95cm / 37.5"

Waist 66cm / 26"

Shoes EU/US/UK 41 / 9.5 / 8

Size EU/US 34 / 4

Hair Light brown

Hair length 7

Eyes Green brown



## LYS LORENTE

Height 180cm / 5' 11.0"

Bust 86cm / 34"

Hips 95cm / 37.5"

Waist 66cm / 26"

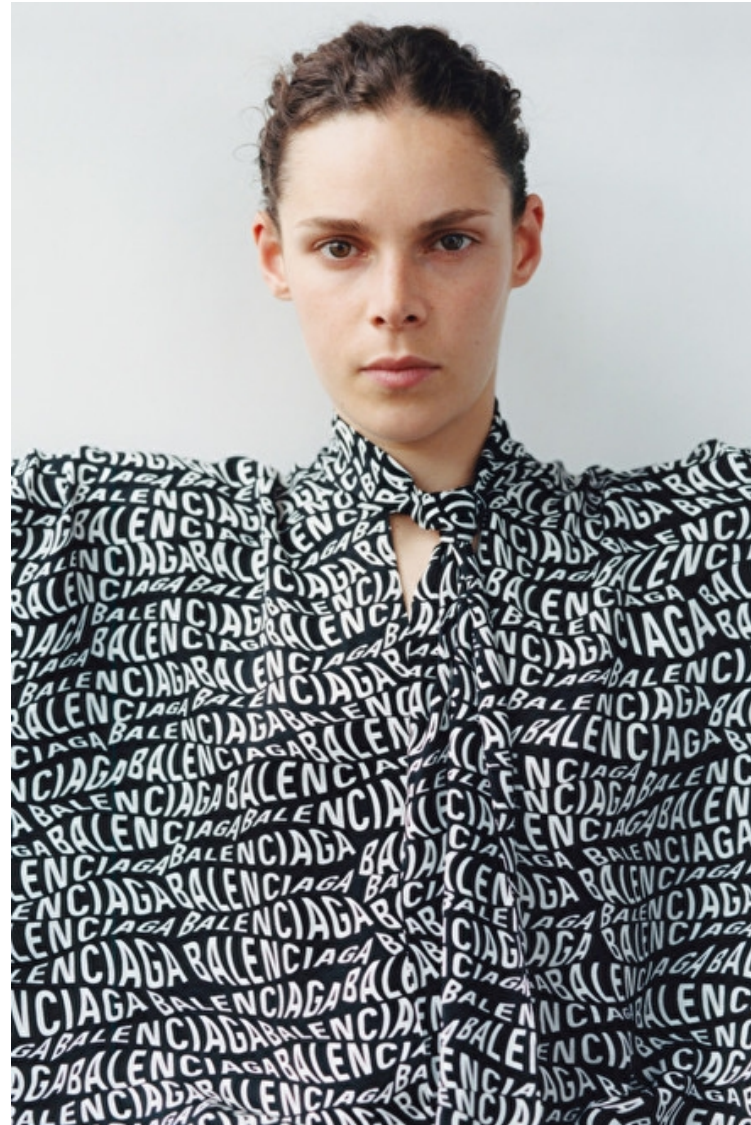
Shoes EU/US/UK 41 / 9.5 / 8

Size EU/US 34 / 4

Hair Light brown

Hair length 7

Eyes Green brown



## LYS LORENTE

Height 180cm / 5' 11.0"

Bust 86cm / 34"

Hips 95cm / 37.5"

Waist 66cm / 26"

Shoes EU/US/UK 41 / 9.5 / 8

Size EU/US 34 / 4

Hair Light brown

Hair length 7

Eyes Green brown



## LYS LORENTE

Height 180cm / 5' 11.0"

Bust 86cm / 34"

Hips 95cm / 37.5"

Waist 66cm / 26"

Shoes EU/US/UK 41 / 9.5 / 8

Size EU/US 34 / 4

Hair Light brown

Hair length 7

Eyes Green brown

