

MORGAN WATKINS

Height 192cm / 6' 3.5"

Chest 112cm / 44"

Waist 81cm / 32"

Shoes EU/US/UK 45 / 12 / 10.5

Inseam 86cm / 34"

Suit size 50cm / 40"

Suit cut Long

Neck 38cm / 15"

Hair Light brown

Hair length 4

Eyes Hazel



MORGAN WATKINS

Height 192cm / 6' 3.5"

Chest 112cm / 44"

Waist 81cm / 32"

Shoes EU/US/UK 45 / 12 / 10.5

Inseam 86cm / 34"

Suit size 50cm / 40"

Suit cut Long

Neck 38cm / 15"

Hair Light brown

Hair length 4

Eyes Hazel



MORGAN WATKINS

Height 192cm / 6' 3.5"

Chest 112cm / 44"

Waist 81cm / 32"

Shoes EU/US/UK 45 / 12 / 10.5

Inseam 86cm / 34"

Suit size 50cm / 40"

Suit cut Long

Neck 38cm / 15"

Hair Light brown

Hair length 4

Eyes Hazel



MORGAN WATKINS

Height 192cm / 6' 3.5"

Chest 112cm / 44"

Waist 81cm / 32"

Shoes EU/US/UK 45 / 12 / 10.5

Inseam 86cm / 34"

Suit size 50cm / 40"

Suit cut Long

Neck 38cm / 15"

Hair Light brown

Hair length 4

Eyes Hazel



MORGAN WATKINS

Height 192cm / 6' 3.5"

Chest 112cm / 44"

Waist 81cm / 32"

Shoes EU/US/UK 45 / 12 / 10.5

Inseam 86cm / 34"

Suit size 50cm / 40"

Suit cut Long

Neck 38cm / 15"

Hair Light brown

Hair length 4

Eyes Hazel



MORGAN WATKINS

Height 192cm / 6' 3.5"

Chest 112cm / 44"

Waist 81cm / 32"

Shoes EU/US/UK 45 / 12 / 10.5

Inseam 86cm / 34"

Suit size 50cm / 40"

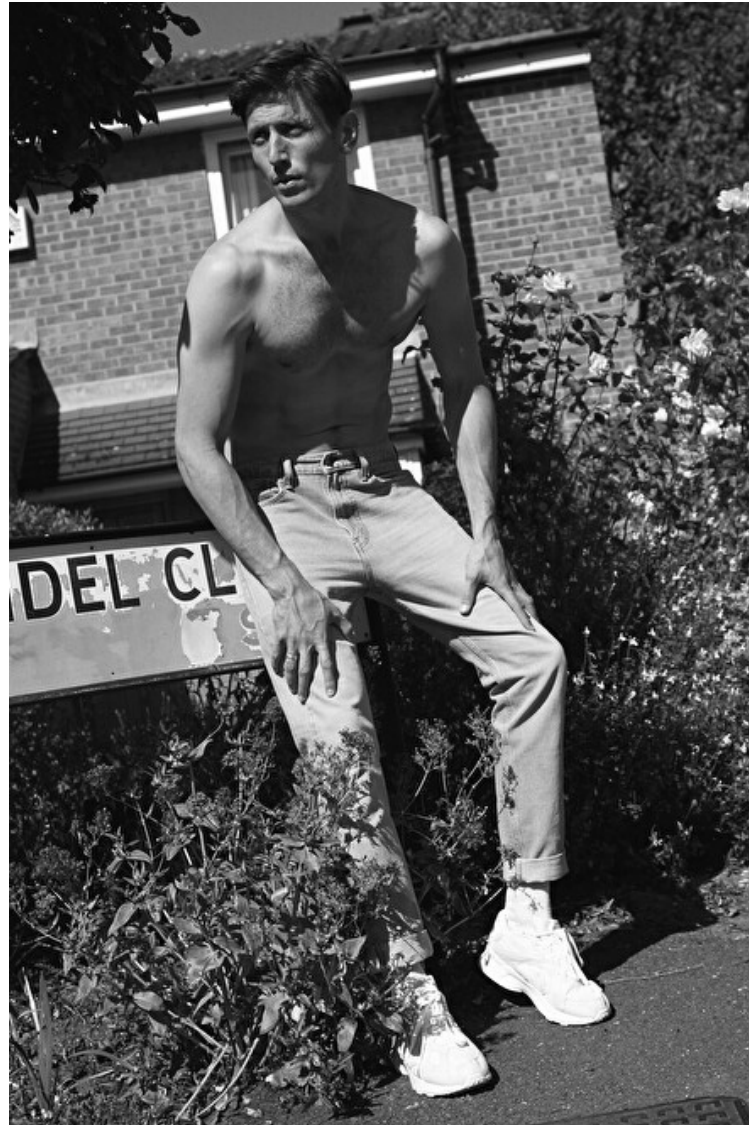
Suit cut Long

Neck 38cm / 15"

Hair Light brown

Hair length 4

Eyes Hazel



Select

MODEL MANAGEMENT

2nd floor, 77 ST. Martins Lane (entrance on Cranbourn Street) , London, WC2N 4AA, England, United Kingdom
Phone: +44 (0) 20 7299 1322 **Fax:** +44 (0) 20 7299 1386 **Email:** info@selectmodel.com **Website:** https://www.selectmodel.com/

MORGAN WATKINS

Height 192cm / 6' 3.5"

Chest 112cm / 44"

Waist 81cm / 32"

Shoes EU/US/UK 45 / 12 / 10.5

Inseam 86cm / 34"

Suit size 50cm / 40"

Suit cut Long

Neck 38cm / 15"

Hair Light brown

Hair length 4

Eyes Hazel



MORGAN WATKINS

Height 192cm / 6' 3.5"

Chest 112cm / 44"

Waist 81cm / 32"

Shoes EU/US/UK 45 / 12 / 10.5

Inseam 86cm / 34"

Suit size 50cm / 40"

Suit cut Long

Neck 38cm / 15"

Hair Light brown

Hair length 4

Eyes Hazel



MORGAN WATKINS

Height 192cm / 6' 3.5"

Chest 112cm / 44"

Waist 81cm / 32"

Shoes EU/US/UK 45 / 12 / 10.5

Inseam 86cm / 34"

Suit size 50cm / 40"

Suit cut Long

Neck 38cm / 15"

Hair Light brown

Hair length 4

Eyes Hazel



MORGAN WATKINS

Height 192cm / 6' 3.5"

Chest 112cm / 44"

Waist 81cm / 32"

Shoes EU/US/UK 45 / 12 / 10.5

Inseam 86cm / 34"

Suit size 50cm / 40"

Suit cut Long

Neck 38cm / 15"

Hair Light brown

Hair length 4

Eyes Hazel



MORGAN WATKINS

Height 192cm / 6' 3.5"

Chest 112cm / 44"

Waist 81cm / 32"

Shoes EU/US/UK 45 / 12 / 10.5

Inseam 86cm / 34"

Suit size 50cm / 40"

Suit cut Long

Neck 38cm / 15"

Hair Light brown

Hair length 4

Eyes Hazel



MORGAN WATKINS

Height 192cm / 6' 3.5"

Chest 112cm / 44"

Waist 81cm / 32"

Shoes EU/US/UK 45 / 12 / 10.5

Inseam 86cm / 34"

Suit size 50cm / 40"

Suit cut Long

Neck 38cm / 15"

Hair Light brown

Hair length 4

Eyes Hazel



MORGAN WATKINS

Height 192cm / 6' 3.5"

Chest 112cm / 44"

Waist 81cm / 32"

Shoes EU/US/UK 45 / 12 / 10.5

Inseam 86cm / 34"

Suit size 50cm / 40"

Suit cut Long

Neck 38cm / 15"

Hair Light brown

Hair length 4

Eyes Hazel



MORGAN WATKINS

Height 192cm / 6' 3.5"

Chest 112cm / 44"

Waist 81cm / 32"

Shoes EU/US/UK 45 / 12 / 10.5

Inseam 86cm / 34"

Suit size 50cm / 40"

Suit cut Long

Neck 38cm / 15"

Hair Light brown

Hair length 4

Eyes Hazel



MORGAN WATKINS

Height 192cm / 6' 3.5"

Chest 112cm / 44"

Waist 81cm / 32"

Shoes EU/US/UK 45 / 12 / 10.5

Inseam 86cm / 34"

Suit size 50cm / 40"

Suit cut Long

Neck 38cm / 15"

Hair Light brown

Hair length 4

Eyes Hazel



MORGAN WATKINS

Height 192cm / 6' 3.5"

Chest 112cm / 44"

Waist 81cm / 32"

Shoes EU/US/UK 45 / 12 / 10.5

Inseam 86cm / 34"

Suit size 50cm / 40"

Suit cut Long

Neck 38cm / 15"

Hair Light brown

Hair length 4

Eyes Hazel



MORGAN WATKINS

Height 192cm / 6' 3.5"

Chest 112cm / 44"

Waist 81cm / 32"

Shoes EU/US/UK 45 / 12 / 10.5

Inseam 86cm / 34"

Suit size 50cm / 40"

Suit cut Long

Neck 38cm / 15"

Hair Light brown

Hair length 4

Eyes Hazel



MORGAN WATKINS

Height 192cm / 6' 3.5"

Chest 112cm / 44"

Waist 81cm / 32"

Shoes EU/US/UK 45 / 12 / 10.5

Inseam 86cm / 34"

Suit size 50cm / 40"

Suit cut Long

Neck 38cm / 15"

Hair Light brown

Hair length 4

Eyes Hazel



Select

MODEL MANAGEMENT

2nd floor, 77 ST. Martins Lane (entrance on Cranbourn Street) , London, WC2N 4AA, England, United Kingdom
Phone: +44 (0) 20 7299 1322 **Fax:** +44 (0) 20 7299 1386 **Email:** info@selectmodel.com **Website:** https://www.selectmodel.com/

MORGAN WATKINS

Height 192cm / 6' 3.5"

Chest 112cm / 44"

Waist 81cm / 32"

Shoes EU/US/UK 45 / 12 / 10.5

Inseam 86cm / 34"

Suit size 50cm / 40"

Suit cut Long

Neck 38cm / 15"

Hair Light brown

Hair length 4

Eyes Hazel



MORGAN WATKINS

Height 192cm / 6' 3.5"

Chest 112cm / 44"

Waist 81cm / 32"

Shoes EU/US/UK 45 / 12 / 10.5

Inseam 86cm / 34"

Suit size 50cm / 40"

Suit cut Long

Neck 38cm / 15"

Hair Light brown

Hair length 4

Eyes Hazel



MORGAN WATKINS

Height 192cm / 6' 3.5"

Chest 112cm / 44"

Waist 81cm / 32"

Shoes EU/US/UK 45 / 12 / 10.5

Inseam 86cm / 34"

Suit size 50cm / 40"

Suit cut Long

Neck 38cm / 15"

Hair Light brown

Hair length 4

Eyes Hazel



MORGAN WATKINS

Height 192cm / 6' 3.5"

Chest 112cm / 44"

Waist 81cm / 32"

Shoes EU/US/UK 45 / 12 / 10.5

Inseam 86cm / 34"

Suit size 50cm / 40"

Suit cut Long

Neck 38cm / 15"

Hair Light brown

Hair length 4

Eyes Hazel

