

# Select

MODEL MANAGEMENT

2nd floor, 77 ST. Martins Lane, London, 00000, England, United Kingdom  
**Phone:** +44 20 7299 1300 **Fax:** +44 20 7299 1385 **Email:** [info@selectmodel.com](mailto:info@selectmodel.com) **Website:** <https://www.selectmodel.com/>

## NATALIE OGG

Height 180cm / 5' 11.0"

Bust 81cm / 32"

Hips 88cm / 34.5"

Waist 63cm / 25"

Shoes EU/US/UK 40.5 / 9.5 / 7

Hair Brown

Eyes Hazel



# Select

MODEL MANAGEMENT

2nd floor, 77 ST. Martins Lane, London, 00000, England, United Kingdom

Phone: +44 20 7299 1300 Fax: +44 20 7299 1385 Email: [info@selectmodel.com](mailto:info@selectmodel.com) Website: <https://www.selectmodel.com/>

## NATALIE OGG

Height 180cm / 5' 11.0"

Bust 81cm / 32"

Hips 88cm / 34.5"

Waist 63cm / 25"

Shoes EU/US/UK 40.5 / 9.5 / 7

Hair Brown

Eyes Hazel



# Select

MODEL MANAGEMENT

2nd floor, 77 ST. Martins Lane, London, 00000, England, United Kingdom

Phone: +44 20 7299 1300 Fax: +44 20 7299 1385 Email: [info@selectmodel.com](mailto:info@selectmodel.com) Website: <https://www.selectmodel.com/>

## NATALIE OGG

Height 180cm / 5' 11.0"

Bust 81cm / 32"

Hips 88cm / 34.5"

Waist 63cm / 25"

Shoes EU/US/UK 40.5 / 9.5 / 7

Hair Brown

Eyes Hazel



# Select

MODEL MANAGEMENT

2nd floor, 77 ST. Martins Lane, London, 00000, England, United Kingdom  
Phone: +44 20 7299 1300 Fax: +44 20 7299 1385 Email: [info@selectmodel.com](mailto:info@selectmodel.com) Website: <https://www.selectmodel.com/>

## NATALIE OGG

Height 180cm / 5' 11.0"

Bust 81cm / 32"

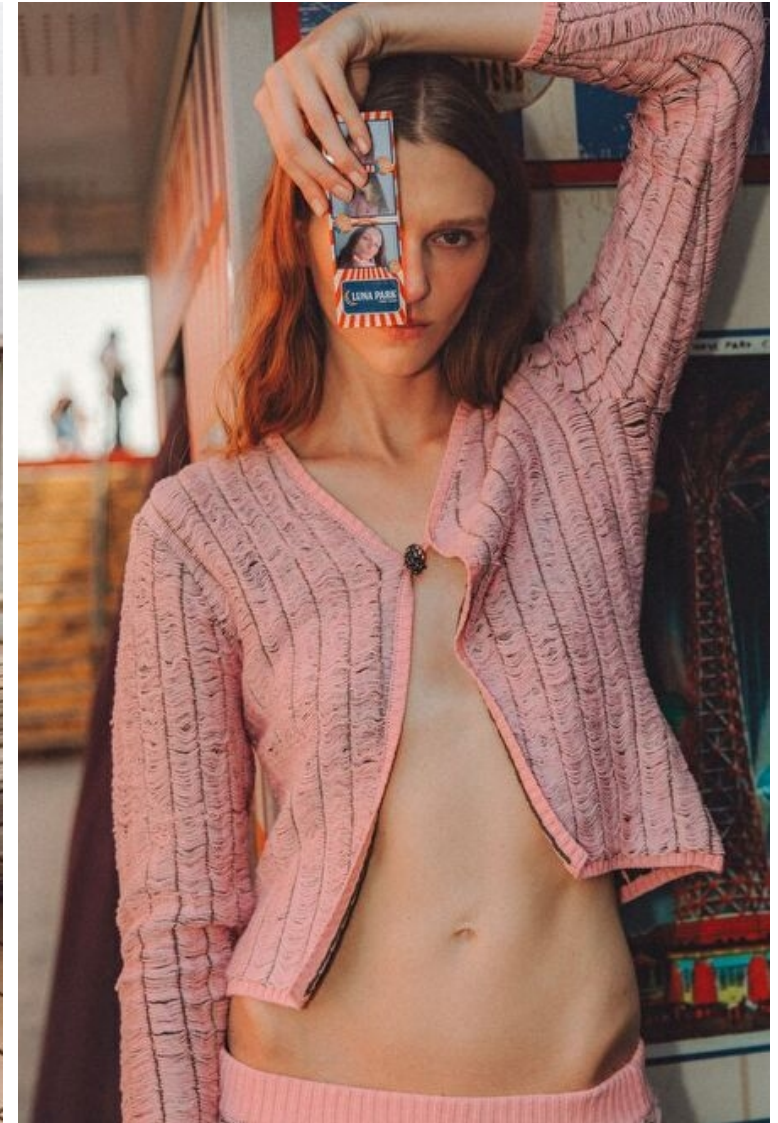
Hips 88cm / 34.5"

Waist 63cm / 25"

Shoes EU/US/UK 40.5 / 9.5 / 7

Hair Brown

Eyes Hazel



# Select

MODEL MANAGEMENT

2nd floor, 77 ST. Martins Lane, London, 00000, England, United Kingdom

Phone: +44 20 7299 1300 Fax: +44 20 7299 1385 Email: [info@selectmodel.com](mailto:info@selectmodel.com) Website: <https://www.selectmodel.com/>

## NATALIE OGG

Height 180cm / 5' 11.0"

Bust 81cm / 32"

Hips 88cm / 34.5"

Waist 63cm / 25"

Shoes EU/US/UK 40.5 / 9.5 / 7

Hair Brown

Eyes Hazel



# Select

MODEL MANAGEMENT

2nd floor, 77 ST. Martins Lane, London, 00000, England, United Kingdom

Phone: +44 20 7299 1300 Fax: +44 20 7299 1385 Email: [info@selectmodel.com](mailto:info@selectmodel.com) Website: <https://www.selectmodel.com/>

## NATALIE OGG

Height 180cm / 5' 11.0"

Bust 81cm / 32"

Hips 88cm / 34.5"

Waist 63cm / 25"

Shoes EU/US/UK 40.5 / 9.5 / 7

Hair Brown

Eyes Hazel



# Select

MODEL MANAGEMENT

2nd floor, 77 ST. Martins Lane, London, 00000, England, United Kingdom  
Phone: +44 20 7299 1300 Fax: +44 20 7299 1385 Email: info@selectmodel.com Website: https://www.selectmodel.com/

## NATALIE OGG

Height 180cm / 5' 11.0"

Bust 81cm / 32"

Hips 88cm / 34.5"

Waist 63cm / 25"

Shoes EU/US/UK 40.5 / 9.5 / 7

Hair Brown

Eyes Hazel



Túnica de cuentas y leggings a juego con las sandalias, de Giorgio Armani; collar, de Alexis Bittar.

En la página anterior, vestido de punto amarillo con detalles metálicos, de Max Mara; brazaletes, de Alex Soldier.

## NATALIE OGG

Height 180cm / 5' 11.0"

Bust 81cm / 32"

Hips 88cm / 34.5"

Waist 63cm / 25"

Shoes EU/US/UK 40.5 / 9.5 / 7

Hair Brown

Eyes Hazel



# Select

MODEL MANAGEMENT

2nd floor, 77 ST. Martins Lane, London, 00000, England, United Kingdom  
**Phone:** +44 20 7299 1300 **Fax:** +44 20 7299 1385 **Email:** info@selectmodel.com **Website:** https://www.selectmodel.com/

## NATALIE OGG

Height 180cm / 5' 11.0"

Bust 81cm / 32"

Hips 88cm / 34.5"

Waist 63cm / 25"

Shoes EU/US/UK 40.5 / 9.5 / 7

Hair Brown

Eyes Hazel



# Select

MODEL MANAGEMENT

2nd floor, 77 ST. Martins Lane, London, 00000, England, United Kingdom

Phone: +44 20 7299 1300 Fax: +44 20 7299 1385 Email: [info@selectmodel.com](mailto:info@selectmodel.com) Website: <https://www.selectmodel.com/>

## NATALIE OGG

Height 180cm / 5' 11.0"

Bust 81cm / 32"

Hips 88cm / 34.5"

Waist 63cm / 25"

Shoes EU/US/UK 40.5 / 9.5 / 7

Hair Brown

Eyes Hazel



# Select

MODEL MANAGEMENT

2nd floor, 77 ST. Martins Lane, London, 00000, England, United Kingdom  
**Phone:** +44 20 7299 1300 **Fax:** +44 20 7299 1385 **Email:** info@selectmodel.com **Website:** https://www.selectmodel.com/

## NATALIE OGG

Height 180cm / 5' 11.0"

Bust 81cm / 32"

Hips 88cm / 34.5"

Waist 63cm / 25"

Shoes EU/US/UK 40.5 / 9.5 / 7

Hair Brown

Eyes Hazel



# Select

MODEL MANAGEMENT

2nd floor, 77 ST. Martins Lane, London, 00000, England, United Kingdom

Phone: +44 20 7299 1300 Fax: +44 20 7299 1385 Email: [info@selectmodel.com](mailto:info@selectmodel.com) Website: <https://www.selectmodel.com/>

## NATALIE OGG

Height 180cm / 5' 11.0"

Bust 81cm / 32"

Hips 88cm / 34.5"

Waist 63cm / 25"

Shoes EU/US/UK 40.5 / 9.5 / 7

Hair Brown

Eyes Hazel



## NATALIE OGG

Height 180cm / 5' 11.0"

Bust 81cm / 32"

Hips 88cm / 34.5"

Waist 63cm / 25"

Shoes EU/US/UK 40.5 / 9.5 / 7

Hair Brown

Eyes Hazel



# Select

MODEL MANAGEMENT

2nd floor, 77 ST. Martins Lane, London, 00000, England, United Kingdom

Phone: +44 20 7299 1300 Fax: +44 20 7299 1385 Email: [info@selectmodel.com](mailto:info@selectmodel.com) Website: <https://www.selectmodel.com/>

## NATALIE OGG

Height 180cm / 5' 11.0"

Bust 81cm / 32"

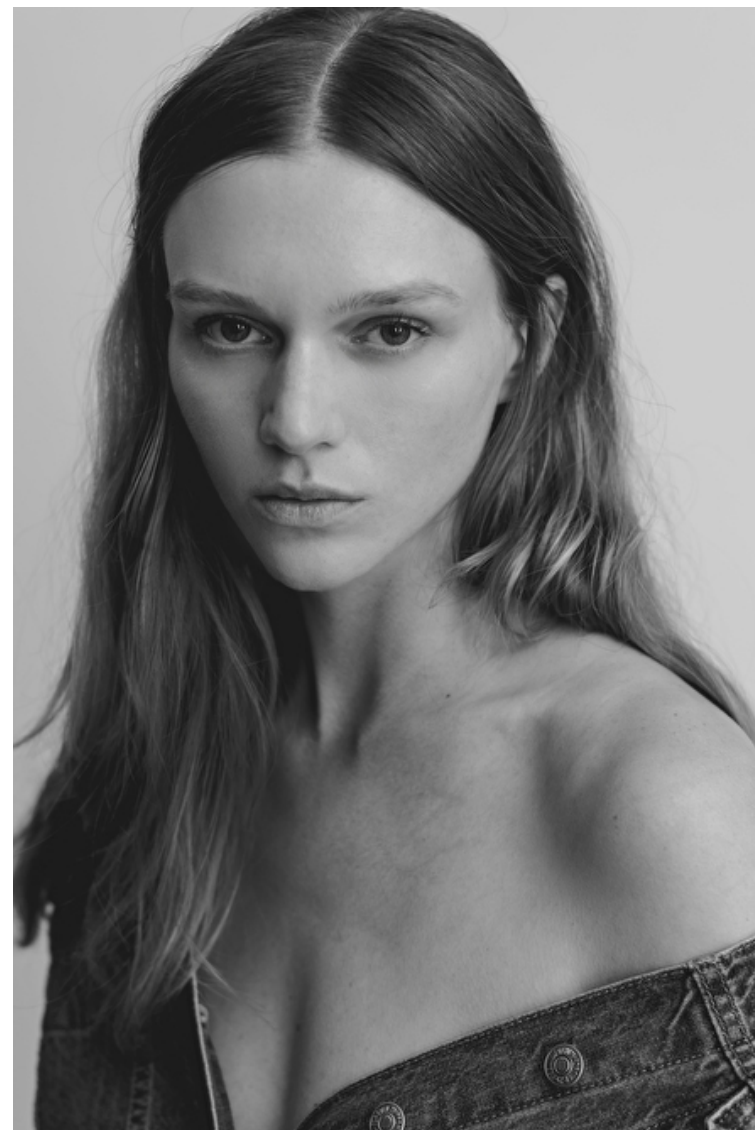
Hips 88cm / 34.5"

Waist 63cm / 25"

Shoes EU/US/UK 40.5 / 9.5 / 7

Hair Brown

Eyes Hazel



# Select

MODEL MANAGEMENT

2nd floor, 77 ST. Martins Lane, London, 00000, England, United Kingdom

Phone: +44 20 7299 1300 Fax: +44 20 7299 1385 Email: [info@selectmodel.com](mailto:info@selectmodel.com) Website: <https://www.selectmodel.com/>

## NATALIE OGG

Height 180cm / 5' 11.0"

Bust 81cm / 32"

Hips 88cm / 34.5"

Waist 63cm / 25"

Shoes EU/US/UK 40.5 / 9.5 / 7

Hair Brown

Eyes Hazel

