

Select

MODEL MANAGEMENT

2nd floor, 77 ST. Martins Lane (entrance on Cranbourn Street) , London, WC2N 4AA, England, United Kingdom
Phone: +44 (0) 20 7299 1322 **Fax:** +44 (0) 20 7299 1386 **Email:** info@selectmodel.com **Website:** <https://www.selectmodel.com/>

NOAH MILLS

Height 188cm / 6' 2.0"

Chest 101cm / 40"

Waist 81cm / 32"

Shoes EU/US/UK 44.5 / 11.5 / 10

Inseam 86cm / 34"

Neck 41cm / 16"

Hair Brown

Eyes Hazel



Select

MODEL MANAGEMENT

2nd floor, 77 ST. Martins Lane (entrance on Cranbourn Street) , London, WC2N 4AA, England, United Kingdom
Phone: +44 (0) 20 7299 1322 **Fax:** +44 (0) 20 7299 1386 **Email:** info@selectmodel.com **Website:** https://www.selectmodel.com/

NOAH MILLS

Height 188cm / 6' 2.0"

Chest 101cm / 40"

Waist 81cm / 32"

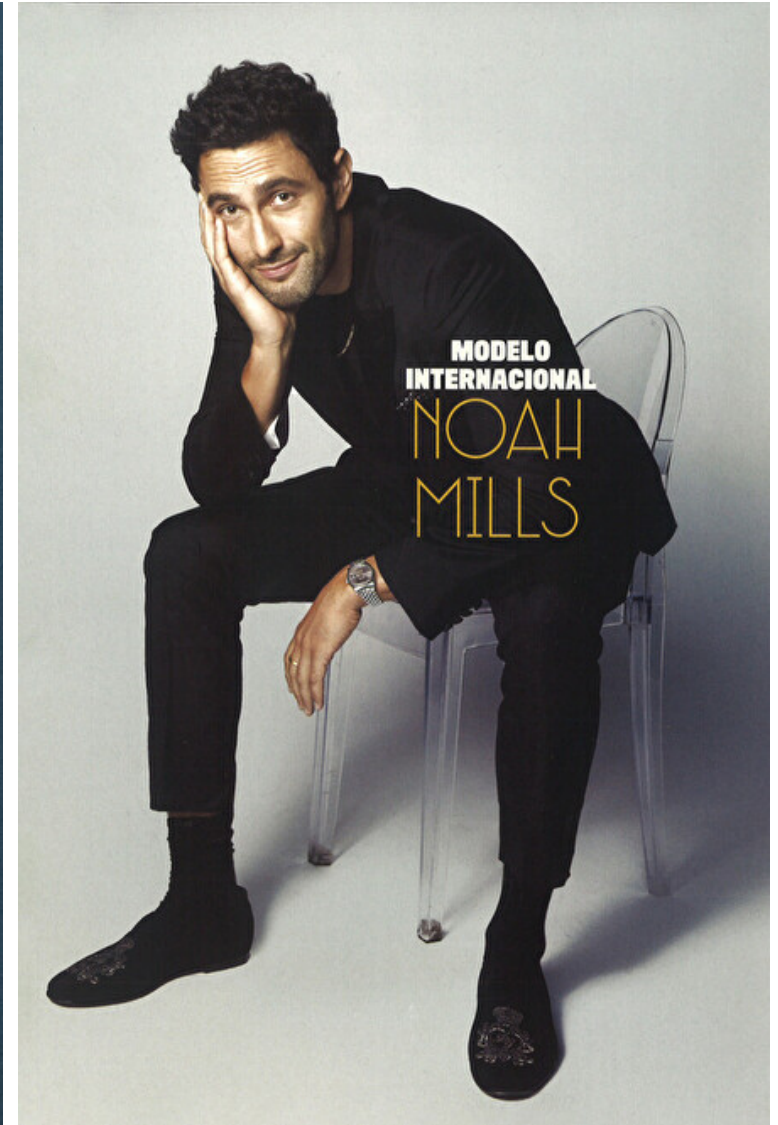
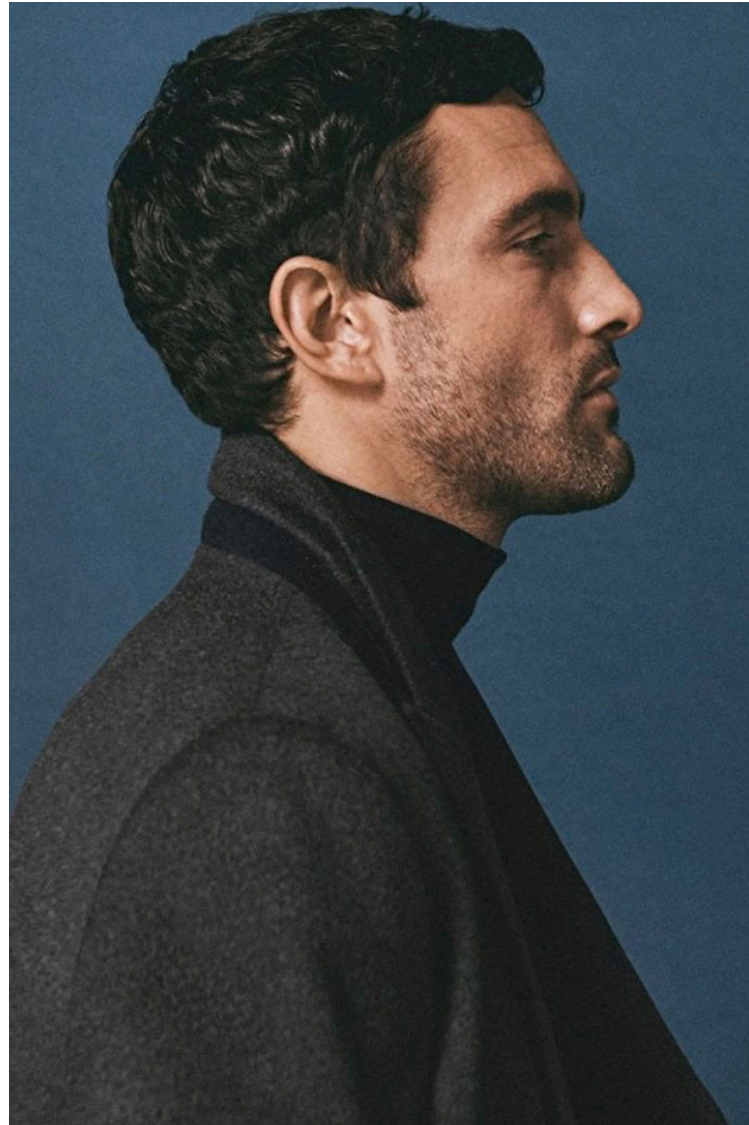
Shoes EU/US/UK 44.5 / 11.5 /
10

Inseam 86cm / 34"

Neck 41cm / 16"

Hair Brown

Eyes Hazel



Select

MODEL MANAGEMENT

2nd floor, 77 ST. Martins Lane (entrance on Cranbourn Street) , London, WC2N 4AA, England, United Kingdom
Phone: +44 (0) 20 7299 1322 Fax: +44 (0) 20 7299 1386 Email: info@selectmodel.com Website: https://www.selectmodel.com/

NOAH MILLS

Height 188cm / 6' 2.0"

Chest 101cm / 40"

Waist 81cm / 32"

Shoes EU/US/UK 44.5 / 11.5 /
10

Inseam 86cm / 34"

Neck 41cm / 16"

Hair Brown

Eyes Hazel



Select

MODEL MANAGEMENT

2nd floor, 77 ST. Martins Lane (entrance on Cranbourn Street) , London, WC2N 4AA, England, United Kingdom
Phone: +44 (0) 20 7299 1322 **Fax:** +44 (0) 20 7299 1386 **Email:** info@selectmodel.com **Website:** https://www.selectmodel.com/

NOAH MILLS

Height 188cm / 6' 2.0"

Chest 101cm / 40"

Waist 81cm / 32"

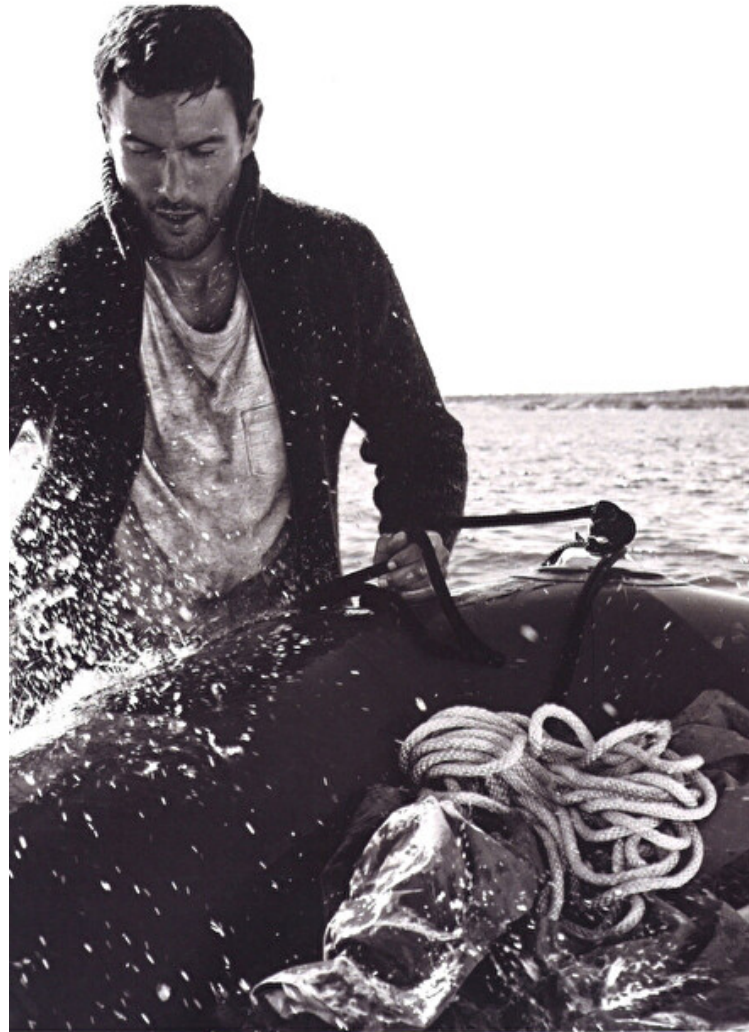
Shoes EU/US/UK 44.5 / 11.5 /
10

Inseam 86cm / 34"

Neck 41cm / 16"

Hair Brown

Eyes Hazel



Oil cloth field jacket P'OLD RALPH LAUREN wool cable knit sweater BELSTAFF flannel shirt DENIM & SUPPLY RALPH LAUREN



NOAH MILLS

Height 188cm / 6' 2.0"

Chest 101cm / 40"

Waist 81cm / 32"

Shoes EU/US/UK 44.5 / 11.5 /
10

Inseam 86cm / 34"

Neck 41cm / 16"

Hair Brown

Eyes Hazel



Select

MODEL MANAGEMENT

2nd floor, 77 ST. Martins Lane (entrance on Cranbourn Street) , London, WC2N 4AA, England, United Kingdom
Phone: +44 (0) 20 7299 1322 **Fax:** +44 (0) 20 7299 1386 **Email:** info@selectmodel.com **Website:** https://www.selectmodel.com/

NOAH MILLS

Height 188cm / 6' 2.0"

Chest 101cm / 40"

Waist 81cm / 32"

Shoes EU/US/UK 44.5 / 11.5 /
10

Inseam 86cm / 34"

Neck 41cm / 16"

Hair Brown

Eyes Hazel



Select

MODEL MANAGEMENT

2nd floor, 77 St. Martins Lane (entrance on Cranbourn Street), London, WC2N 4AA, England, United Kingdom
Phone: +44 (0) 20 7299 1322 Fax: +44 (0) 20 7299 1386 Email: info@selectmodel.com Website: <https://www.selectmodel.com/>

NOAH MILLS

Height 188cm / 6' 2.0"

Chest 101cm / 40"

Waist 81cm / 32"

Shoes EU/US/UK 44.5 / 11.5 /
10

Inseam 86cm / 34"

Neck 41cm / 16"

Hair Brown

Eyes Hazel



Select

MODEL MANAGEMENT

2nd floor, 77 ST. Martins Lane (entrance on Cranbourn Street) , London, WC2N 4AA, England, United Kingdom
Phone: +44 (0) 20 7299 1322 **Fax:** +44 (0) 20 7299 1386 **Email:** info@selectmodel.com **Website:** https://www.selectmodel.com/

NOAH MILLS

Height 188cm / 6' 2.0"

Chest 101cm / 40"

Waist 81cm / 32"

Shoes EU/US/UK 44.5 / 11.5 /
10

Inseam 86cm / 34"

Neck 41cm / 16"

Hair Brown

Eyes Hazel



NOAH MILLS

Height 188cm / 6' 2.0"

Chest 101cm / 40"

Waist 81cm / 32"

Shoes EU/US/UK 44.5 / 11.5 /
10

Inseam 86cm / 34"

Neck 41cm / 16"

Hair Brown

Eyes Hazel



Select

MODEL MANAGEMENT

2nd floor, 77 ST. Martins Lane (entrance on Cranbourn Street) , London, WC2N 4AA, England, United Kingdom
Phone: +44 (0) 20 7299 1322 **Fax:** +44 (0) 20 7299 1386 **Email:** info@selectmodel.com **Website:** https://www.selectmodel.com/

NOAH MILLS

Height 188cm / 6' 2.0"

Chest 101cm / 40"

Waist 81cm / 32"

Shoes EU/US/UK 44.5 / 11.5 /
10

Inseam 86cm / 34"

Neck 41cm / 16"

Hair Brown

Eyes Hazel



Select

MODEL MANAGEMENT

2nd floor, 77 ST. Martins Lane (entrance on Cranbourn Street) , London, WC2N 4AA, England, United Kingdom
Phone: +44 (0) 20 7299 1322 **Fax:** +44 (0) 20 7299 1386 **Email:** info@selectmodel.com **Website:** https://www.selectmodel.com/

NOAH MILLS

Height 188cm / 6' 2.0"

Chest 101cm / 40"

Waist 81cm / 32"

Shoes EU/US/UK 44.5 / 11.5 /
10

Inseam 86cm / 34"

Neck 41cm / 16"

Hair Brown

Eyes Hazel



Select

MODEL MANAGEMENT

2nd floor, 77 ST. Martins Lane (entrance on Cranbourn Street) , London, WC2N 4AA, England, United Kingdom
Phone: +44 (0) 20 7299 1322 **Fax:** +44 (0) 20 7299 1386 **Email:** info@selectmodel.com **Website:** https://www.selectmodel.com/

NOAH MILLS

Height 188cm / 6' 2.0"

Chest 101cm / 40"

Waist 81cm / 32"

Shoes EU/US/UK 44.5 / 11.5 /
10

Inseam 86cm / 34"

Neck 41cm / 16"

Hair Brown

Eyes Hazel



Select

MODEL MANAGEMENT

2nd floor, 77 ST. Martins Lane (entrance on Cranbourn Street) , London, WC2N 4AA, England, United Kingdom
Phone: +44 (0) 20 7299 1322 **Fax:** +44 (0) 20 7299 1386 **Email:** info@selectmodel.com **Website:** https://www.selectmodel.com/

NOAH MILLS

Height 188cm / 6' 2.0"

Chest 101cm / 40"

Waist 81cm / 32"

Shoes EU/US/UK 44.5 / 11.5 /
10

Inseam 86cm / 34"

Neck 41cm / 16"

Hair Brown

Eyes Hazel



Select

MODEL MANAGEMENT

2nd floor, 77 St. Martins Lane (entrance on Cranbourn Street), London, WC2N 4AA, England, United Kingdom
Phone: +44 (0) 20 7299 1322 Fax: +44 (0) 20 7299 1386 Email: info@selectmodel.com Website: https://www.selectmodel.com/

NOAH MILLS

Height 188cm / 6' 2.0"

Chest 101cm / 40"

Waist 81cm / 32"

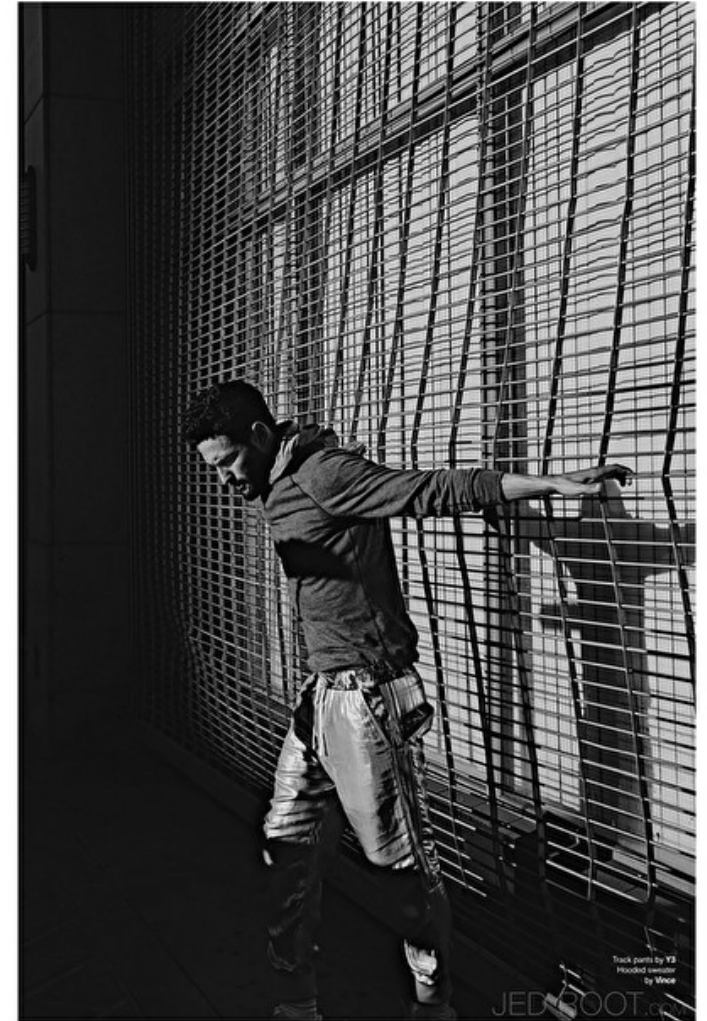
Shoes EU/US/UK 44.5 / 11.5 /
10

Inseam 86cm / 34"

Neck 41cm / 16"

Hair Brown

Eyes Hazel



Select

MODEL MANAGEMENT

2nd floor, 77 ST. Martins Lane (entrance on Cranbourn Street) , London, WC2N 4AA, England, United Kingdom
Phone: +44 (0) 20 7299 1322 **Fax:** +44 (0) 20 7299 1386 **Email:** info@selectmodel.com **Website:** https://www.selectmodel.com/

NOAH MILLS

Height 188cm / 6' 2.0"

Chest 101cm / 40"

Waist 81cm / 32"

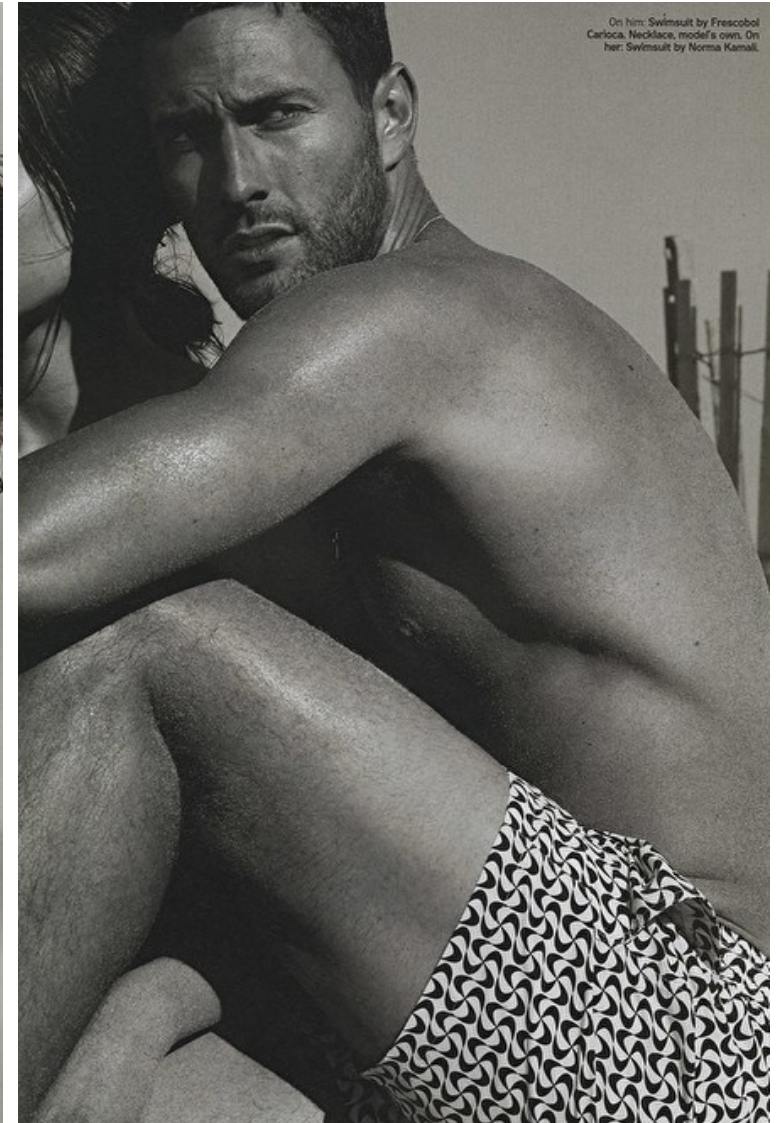
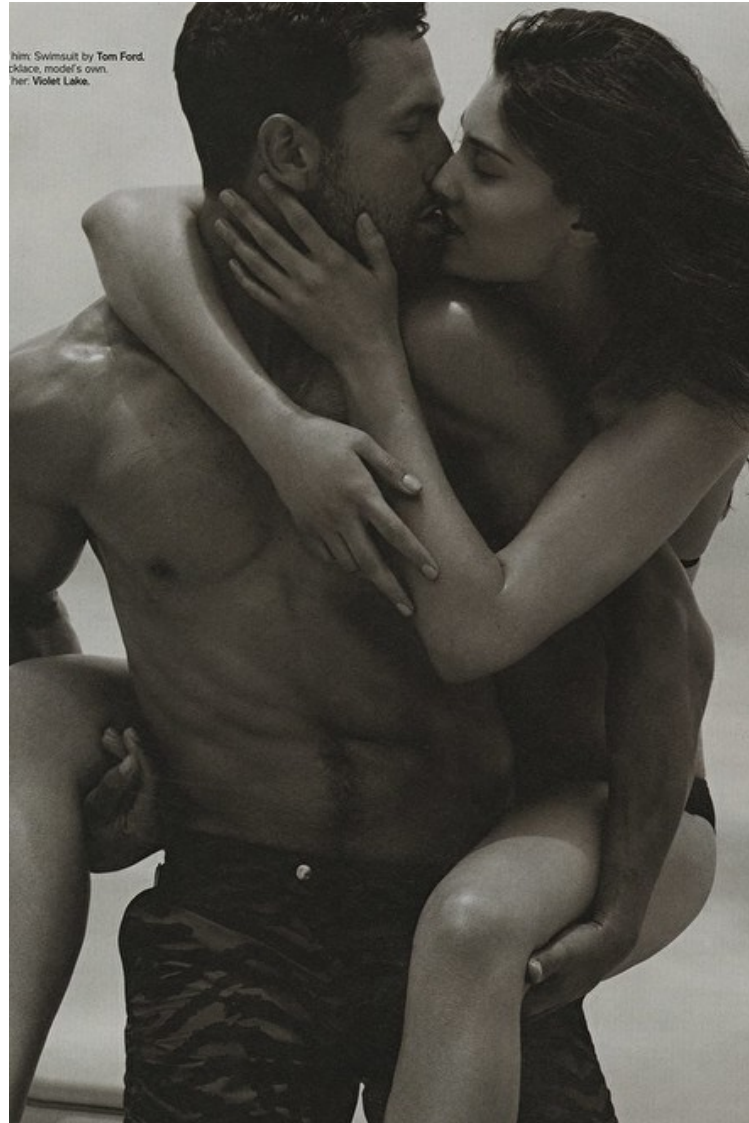
Shoes EU/US/UK 44.5 / 11.5 /
10

Inseam 86cm / 34"

Neck 41cm / 16"

Hair Brown

Eyes Hazel



Select

MODEL MANAGEMENT

2nd floor, 77 ST. Martins Lane (entrance on Cranbourn Street) , London, WC2N 4AA, England, United Kingdom
Phone: +44 (0) 20 7299 1322 Fax: +44 (0) 20 7299 1386 Email: info@selectmodel.com Website: https://www.selectmodel.com/

NOAH MILLS

Height 188cm / 6' 2.0"

Chest 101cm / 40"

Waist 81cm / 32"

Shoes EU/US/UK 44.5 / 11.5 /
10

Inseam 86cm / 34"

Neck 41cm / 16"

Hair Brown

Eyes Hazel



Select

MODEL MANAGEMENT

2nd floor, 77 ST. Martins Lane (entrance on Cranbourn Street) , London, WC2N 4AA, England, United Kingdom
Phone: +44 (0) 20 7299 1322 **Fax:** +44 (0) 20 7299 1386 **Email:** info@selectmodel.com **Website:** https://www.selectmodel.com/

NOAH MILLS

Height 188cm / 6' 2.0"

Chest 101cm / 40"

Waist 81cm / 32"

Shoes EU/US/UK 44.5 / 11.5 /
10

Inseam 86cm / 34"

Neck 41cm / 16"

Hair Brown

Eyes Hazel



This page shirt, £450, Ermenegildo Zegna Couture (zegna.com); chinos, £230, Hugo Boss (hugoboss.com)

Opposite trench coat, £1,485, Giorgio Armani (armani.com); trousers, £330, Dunhill (dunhill.com)

Grooming Jonny McKay at Defacto
Model Noah Mills at IMG

Select

MODEL MANAGEMENT

2nd floor, 77 ST. Martins Lane (entrance on Cranbourn Street) , London, WC2N 4AA, England, United Kingdom
Phone: +44 (0) 20 7299 1322 **Fax:** +44 (0) 20 7299 1386 **Email:** info@selectmodel.com **Website:** https://www.selectmodel.com/

NOAH MILLS

Height 188cm / 6' 2.0"

Chest 101cm / 40"

Waist 81cm / 32"

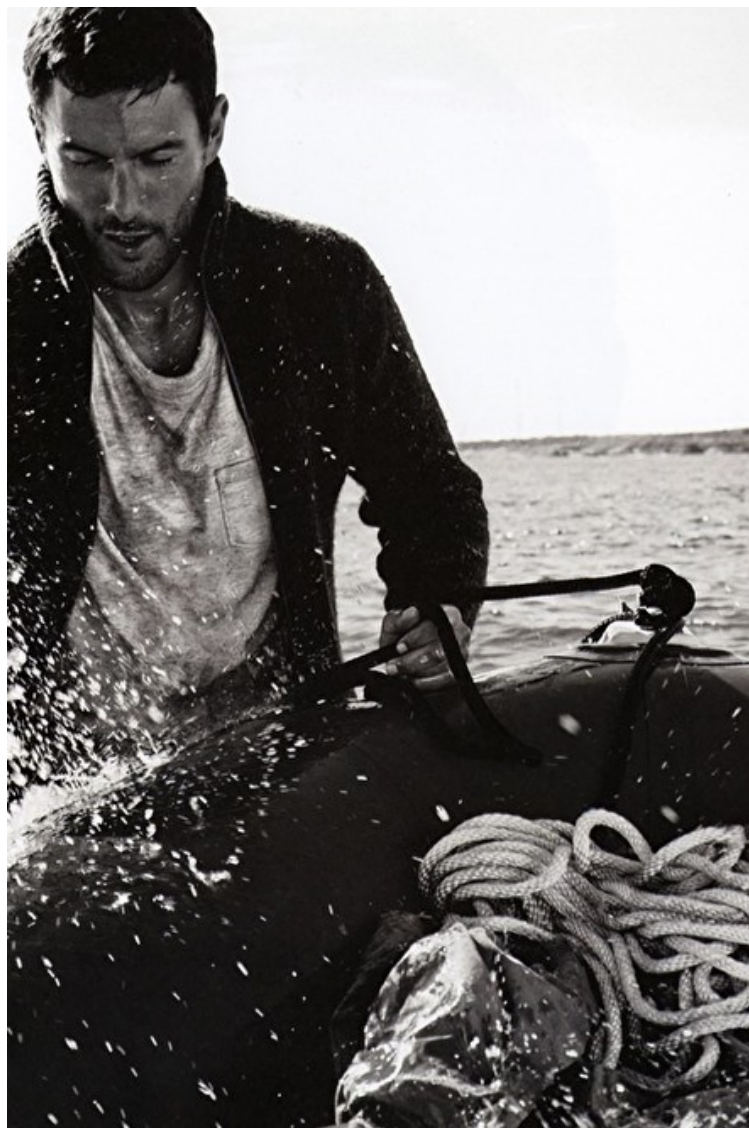
Shoes EU/US/UK 44.5 / 11.5 /
10

Inseam 86cm / 34"

Neck 41cm / 16"

Hair Brown

Eyes Hazel



Select

MODEL MANAGEMENT

2nd floor, 77 ST. Martins Lane (entrance on Cranbourn Street) , London, WC2N 4AA, England, United Kingdom
Phone: +44 (0) 20 7299 1322 **Fax:** +44 (0) 20 7299 1386 **Email:** info@selectmodel.com **Website:** https://www.selectmodel.com/

NOAH MILLS

Height 188cm / 6' 2.0"

Chest 101cm / 40"

Waist 81cm / 32"

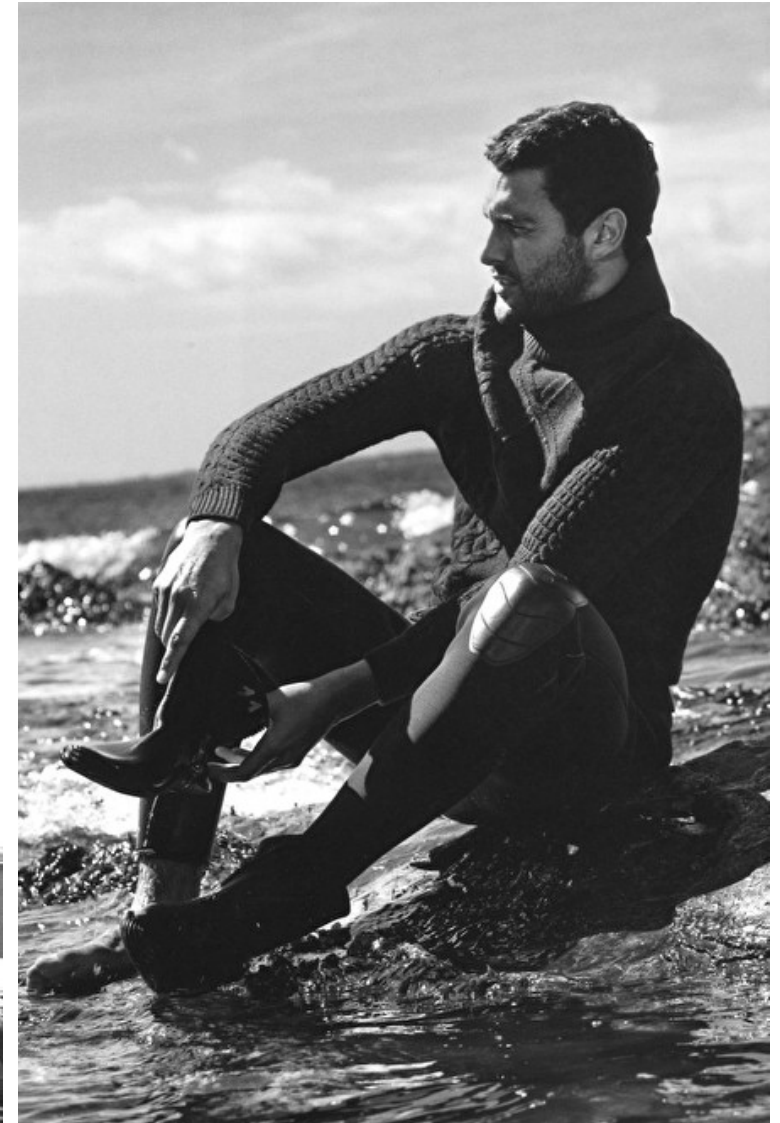
Shoes EU/US/UK 44.5 / 11.5 /
10

Inseam 86cm / 34"

Neck 41cm / 16"

Hair Brown

Eyes Hazel



NOAH MILLS

Height 188cm / 6' 2.0"

Chest 101cm / 40"

Waist 81cm / 32"

Shoes EU/US/UK 44.5 / 11.5 /
10

Inseam 86cm / 34"

Neck 41cm / 16"

Hair Brown

Eyes Hazel

S W

W E

E A

A T

T H

E E

R R

PHOTOGRAPHS BY MILAN VUKMIROVIC



Sweater by RAIF ADELBERG.
T-shirt by JOHN VARVATOS.
Sweatpants by DSQUARED2.



DETAILS OCTOBER 2013 131

Select

MODEL MANAGEMENT

2nd floor, 77 ST. Martins Lane (entrance on Cranbourn Street) , London, WC2N 4AA, England, United Kingdom
Phone: +44 (0) 20 7299 1322 Fax: +44 (0) 20 7299 1386 Email: info@selectmodel.com Website: https://www.selectmodel.com/

NOAH MILLS

Height 188cm / 6' 2.0"

Chest 101cm / 40"

Waist 81cm / 32"

Shoes EU/US/UK 44.5 / 11.5 /
10

Inseam 86cm / 34"

Neck 41cm / 16"

Hair Brown

Eyes Hazel



Select

MODEL MANAGEMENT

2nd floor, 77 ST. Martins Lane (entrance on Cranbourn Street) , London, WC2N 4AA, England, United Kingdom
Phone: +44 (0) 20 7299 1322 **Fax:** +44 (0) 20 7299 1386 **Email:** info@selectmodel.com **Website:** https://www.selectmodel.com/

NOAH MILLS

Height 188cm / 6' 2.0"

Chest 101cm / 40"

Waist 81cm / 32"

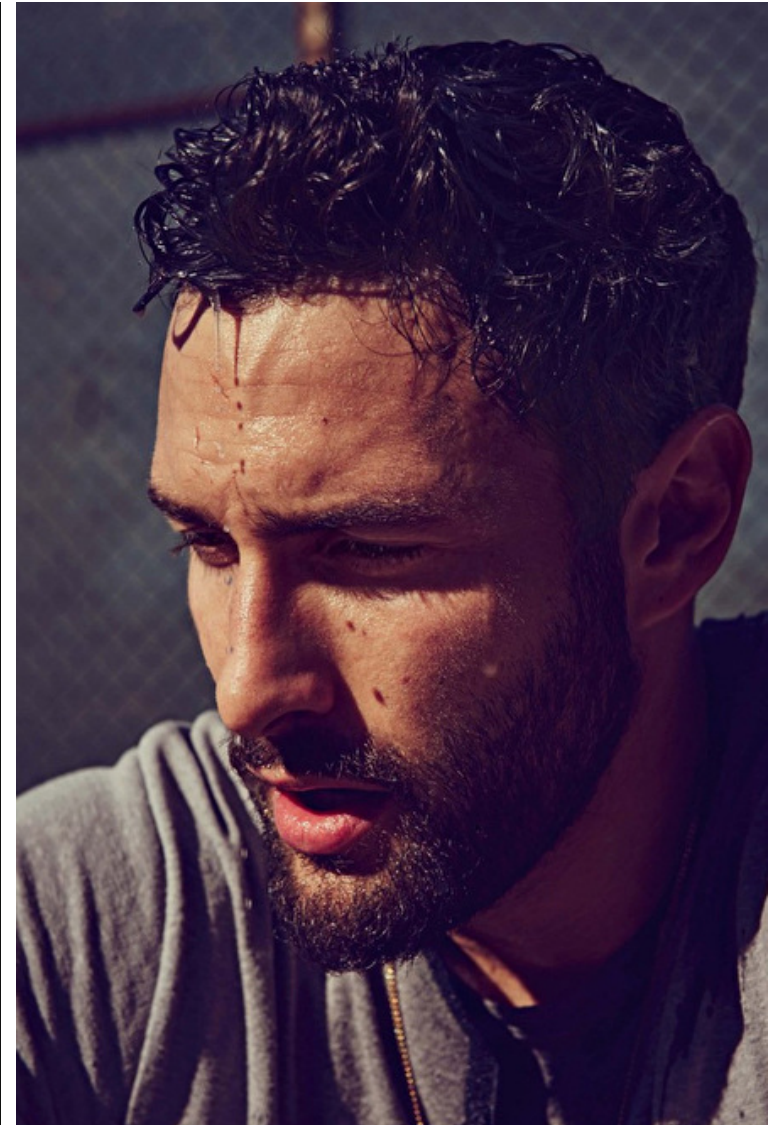
Shoes EU/US/UK 44.5 / 11.5 /
10

Inseam 86cm / 34"

Neck 41cm / 16"

Hair Brown

Eyes Hazel



Select

MODEL MANAGEMENT

2nd floor, 77 ST. Martins Lane (entrance on Cranbourn Street) , London, WC2N 4AA, England, United Kingdom
Phone: +44 (0) 20 7299 1322 **Fax:** +44 (0) 20 7299 1386 **Email:** info@selectmodel.com **Website:** https://www.selectmodel.com/

NOAH MILLS

Height 188cm / 6' 2.0"

Chest 101cm / 40"

Waist 81cm / 32"

Shoes EU/US/UK 44.5 / 11.5 /
10

Inseam 86cm / 34"

Neck 41cm / 16"

Hair Brown

Eyes Hazel

