

## Paul Sculfor

Height 183cm / 6' 0.0"

Chest 104cm / 41"

Waist 84cm / 33"

Shoes EU/US/UK 45 / 12 / 10.5

Inseam 80cm / 31.5"

Suit size 50cm / 40"

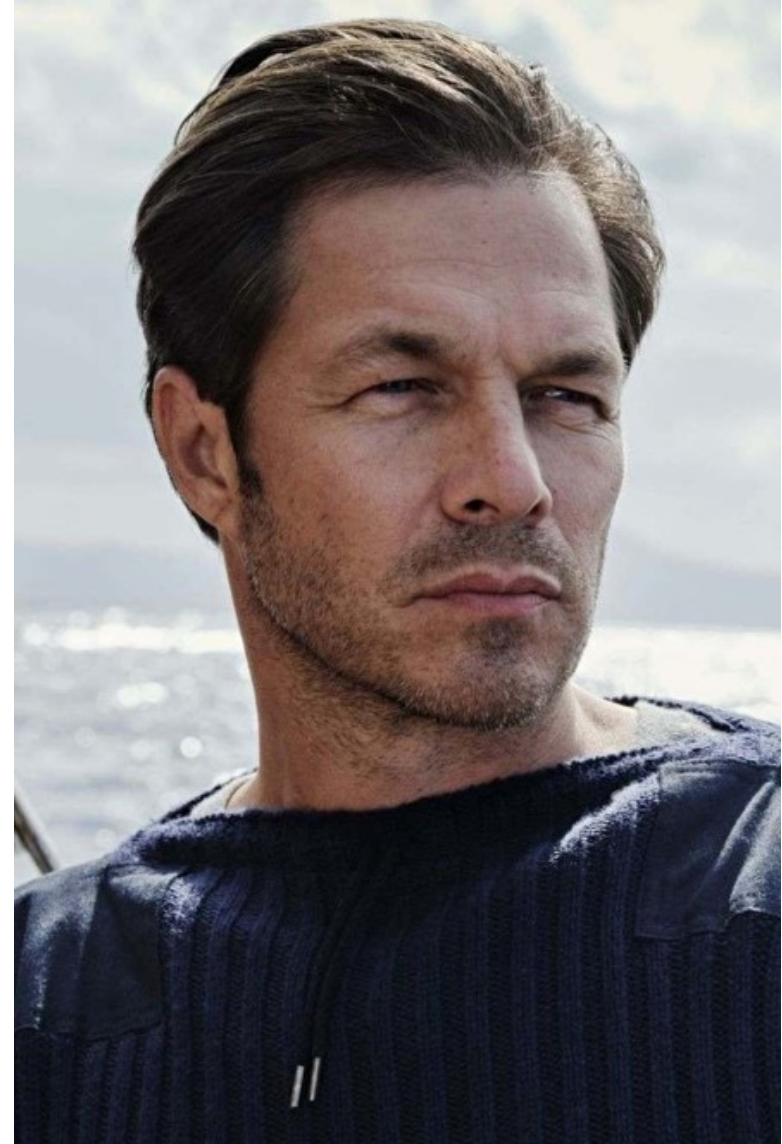
Suit cut Regular

Neck 40cm / 15.5"

Hair Light brown

Hair length 4

Eyes Blue



# Select

MODEL MANAGEMENT

2nd floor, 77 ST. Martins Lane (entrance on Cranbourn Street) , London, WC2N 4AA, England, United Kingdom  
**Phone:** +44 (0) 20 7299 1322 **Fax:** +44 (0) 20 7299 1386 **Email:** info@selectmodel.com **Website:** https://www.selectmodel.com/

## Paul Sculfor

Height 183cm / 6' 0.0"

Chest 104cm / 41"

Waist 84cm / 33"

Shoes EU/US/UK 45 / 12 / 10.5

Inseam 80cm / 31.5"

Suit size 50cm / 40"

Suit cut Regular

Neck 40cm / 15.5"

Hair Light brown

Hair length 4

Eyes Blue



## Paul Sculfor

Height 183cm / 6' 0.0"

Chest 104cm / 41"

Waist 84cm / 33"

Shoes EU/US/UK 45 / 12 / 10.5

Inseam 80cm / 31.5"

Suit size 50cm / 40"

Suit cut Regular

Neck 40cm / 15.5"

Hair Light brown

Hair length 4

Eyes Blue



## Paul Sculfor

Height 183cm / 6' 0.0"

Chest 104cm / 41"

Waist 84cm / 33"

Shoes EU/US/UK 45 / 12 / 10.5

Inseam 80cm / 31.5"

Suit size 50cm / 40"

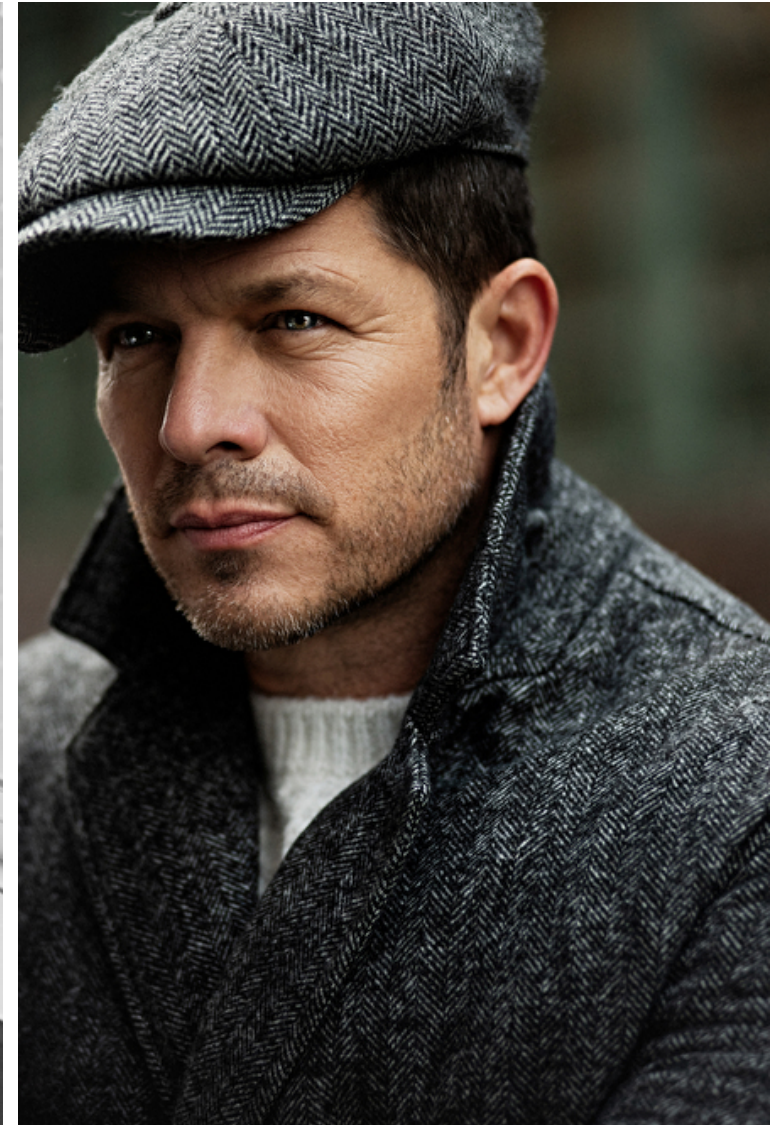
Suit cut Regular

Neck 40cm / 15.5"

Hair Light brown

Hair length 4

Eyes Blue



# Select

MODEL MANAGEMENT

2nd floor, 77 ST. Martins Lane (entrance on Cranbourn Street) , London, WC2N 4AA, England, United Kingdom  
**Phone:** +44 (0) 20 7299 1322 **Fax:** +44 (0) 20 7299 1386 **Email:** info@selectmodel.com **Website:** https://www.selectmodel.com/

## Paul Sculfor

Height 183cm / 6' 0.0"

Chest 104cm / 41"

Waist 84cm / 33"

Shoes EU/US/UK 45 / 12 / 10.5

Inseam 80cm / 31.5"

Suit size 50cm / 40"

Suit cut Regular

Neck 40cm / 15.5"

Hair Light brown

Hair length 4

Eyes Blue



## Paul Sculfor

Height 183cm / 6' 0.0"

Chest 104cm / 41"

Waist 84cm / 33"

Shoes EU/US/UK 45 / 12 / 10.5

Inseam 80cm / 31.5"

Suit size 50cm / 40"

Suit cut Regular

Neck 40cm / 15.5"

Hair Light brown

Hair length 4

Eyes Blue



## Paul Sculfor

Height 183cm / 6' 0.0"

Chest 104cm / 41"

Waist 84cm / 33"

Shoes EU/US/UK 45 / 12 / 10.5

Inseam 80cm / 31.5"

Suit size 50cm / 40"

Suit cut Regular

Neck 40cm / 15.5"

Hair Light brown

Hair length 4

Eyes Blue



# Select

MODEL MANAGEMENT

2nd floor, 77 ST. Martins Lane (entrance on Cranbourn Street) , London, WC2N 4AA, England, United Kingdom  
**Phone:** +44 (0) 20 7299 1322 **Fax:** +44 (0) 20 7299 1386 **Email:** info@selectmodel.com **Website:** https://www.selectmodel.com/

## Paul Sculfor

Height 183cm / 6' 0.0"

Chest 104cm / 41"

Waist 84cm / 33"

Shoes EU/US/UK 45 / 12 / 10.5

Inseam 80cm / 31.5"

Suit size 50cm / 40"

Suit cut Regular

Neck 40cm / 15.5"

Hair Light brown

Hair length 4

Eyes Blue





# Select

MODEL MANAGEMENT

2nd floor, 77 ST. Martins Lane (entrance on Cranbourn Street) , London, WC2N 4AA, England, United Kingdom  
**Phone:** +44 (0) 20 7299 1322 **Fax:** +44 (0) 20 7299 1386 **Email:** info@selectmodel.com **Website:** https://www.selectmodel.com/

## Paul Sculfor

Height 183cm / 6' 0.0"

Chest 104cm / 41"

Waist 84cm / 33"

Shoes EU/US/UK 45 / 12 / 10.5

Inseam 80cm / 31.5"

Suit size 50cm / 40"

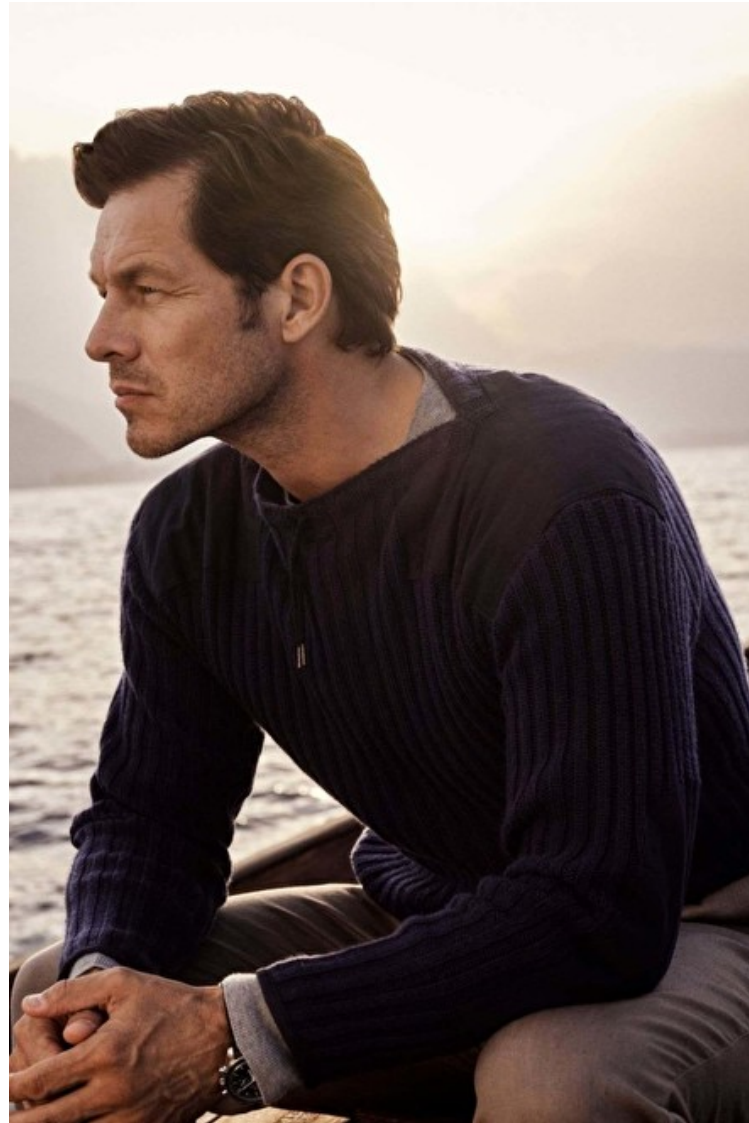
Suit cut Regular

Neck 40cm / 15.5"

Hair Light brown

Hair length 4

Eyes Blue



# Select

MODEL MANAGEMENT

2nd floor, 77 ST. Martins Lane (entrance on Cranbourn Street) , London, WC2N 4AA, England, United Kingdom  
**Phone:** +44 (0) 20 7299 1322 **Fax:** +44 (0) 20 7299 1386 **Email:** info@selectmodel.com **Website:** https://www.selectmodel.com/

## Paul Sculfor

Height 183cm / 6' 0.0"

Chest 104cm / 41"

Waist 84cm / 33"

Shoes EU/US/UK 45 / 12 / 10.5

Inseam 80cm / 31.5"

Suit size 50cm / 40"

Suit cut Regular

Neck 40cm / 15.5"

Hair Light brown

Hair length 4

Eyes Blue



# Select

MODEL MANAGEMENT

2nd floor, 77 ST. Martins Lane (entrance on Cranbourn Street) , London, WC2N 4AA, England, United Kingdom  
**Phone:** +44 (0) 20 7299 1322 **Fax:** +44 (0) 20 7299 1386 **Email:** info@selectmodel.com **Website:** https://www.selectmodel.com/

## Paul Sculfor

Height 183cm / 6' 0.0"

Chest 104cm / 41"

Waist 84cm / 33"

Shoes EU/US/UK 45 / 12 / 10.5

Inseam 80cm / 31.5"

Suit size 50cm / 40"

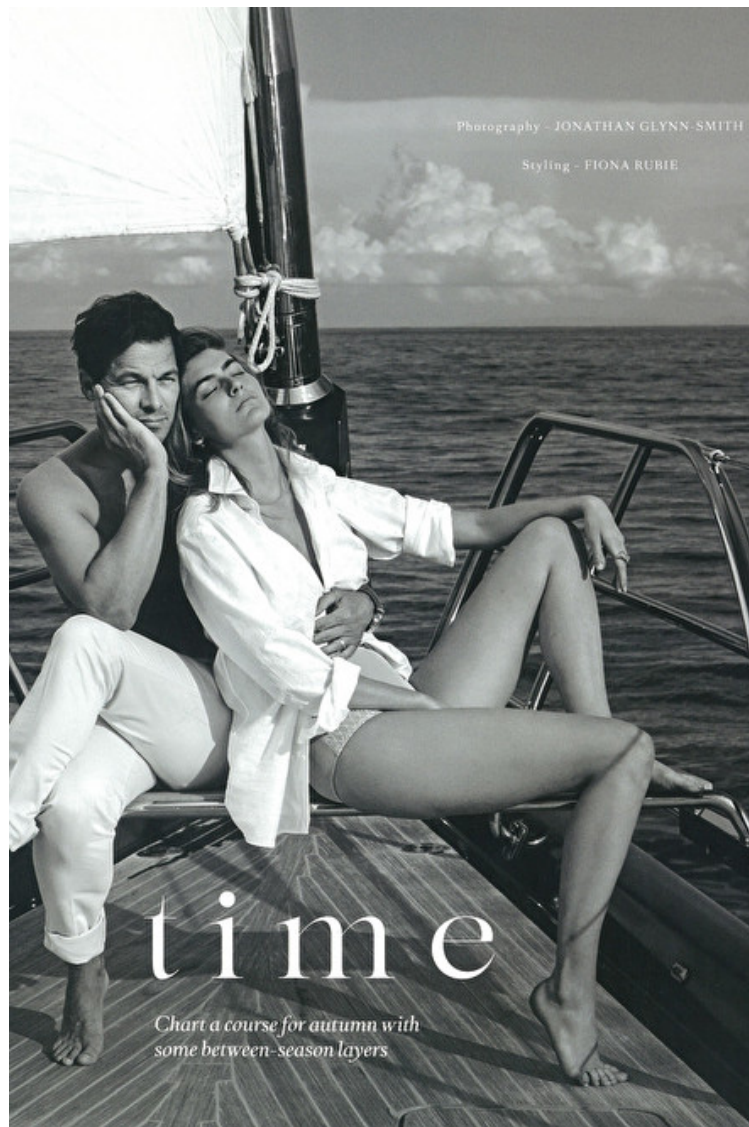
Suit cut Regular

Neck 40cm / 15.5"

Hair Light brown

Hair length 4

Eyes Blue



# Select

MODEL MANAGEMENT

2nd floor, 77 ST. Martins Lane (entrance on Cranbourn Street) , London, WC2N 4AA, England, United Kingdom  
**Phone:** +44 (0) 20 7299 1322 **Fax:** +44 (0) 20 7299 1386 **Email:** info@selectmodel.com **Website:** https://www.selectmodel.com/

## Paul Sculfor

Height 183cm / 6' 0.0"

Chest 104cm / 41"

Waist 84cm / 33"

Shoes EU/US/UK 45 / 12 / 10.5

Inseam 80cm / 31.5"

Suit size 50cm / 40"

Suit cut Regular

Neck 40cm / 15.5"

Hair Light brown

Hair length 4

Eyes Blue



# Select

MODEL MANAGEMENT

2nd floor, 77 ST. Martins Lane (entrance on Cranbourn Street) , London, WC2N 4AA, England, United Kingdom  
Phone: +44 (0) 20 7299 1322 Fax: +44 (0) 20 7299 1386 Email: info@selectmodel.com Website: https://www.selectmodel.com/

## Paul Sculfor

Height 183cm / 6' 0.0"

Chest 104cm / 41"

Waist 84cm / 33"

Shoes EU/US/UK 45 / 12 / 10.5

Inseam 80cm / 31.5"

Suit size 50cm / 40"

Suit cut Regular

Neck 40cm / 15.5"

Hair Light brown

Hair length 4

Eyes Blue



## Paul Sculfor

Height 183cm / 6' 0.0"

Chest 104cm / 41"

Waist 84cm / 33"

Shoes EU/US/UK 45 / 12 / 10.5

Inseam 80cm / 31.5"

Suit size 50cm / 40"

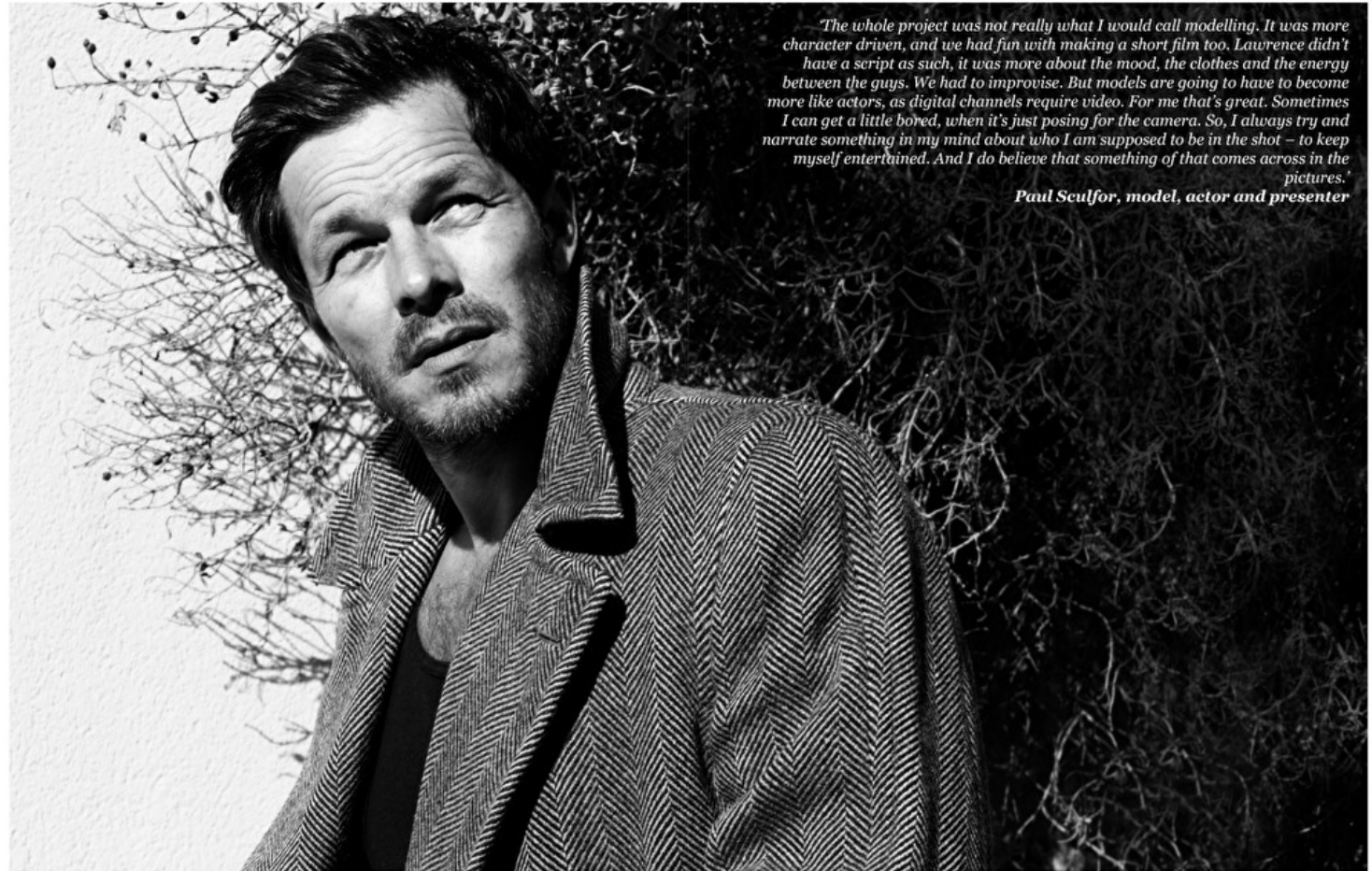
Suit cut Regular

Neck 40cm / 15.5"

Hair Light brown

Hair length 4

Eyes Blue



*'The whole project was not really what I would call modelling. It was more character driven, and we had fun with making a short film too. Lawrence didn't have a script as such, it was more about the mood, the clothes and the energy between the guys. We had to improvise. But models are going to have to become more like actors, as digital channels require video. For me that's great. Sometimes I can get a little bored, when it's just posing for the camera. So, I always try and narrate something in my mind about who I am supposed to be in the shot – to keep myself entertained. And I do believe that something of that comes across in the pictures.'*

**Paul Sculfor, model, actor and presenter**

## Paul Sculfor

Height 183cm / 6' 0.0"

Chest 104cm / 41"

Waist 84cm / 33"

Shoes EU/US/UK 45 / 12 / 10.5

Inseam 80cm / 31.5"

Suit size 50cm / 40"

Suit cut Regular

Neck 40cm / 15.5"

Hair Light brown

Hair length 4

Eyes Blue



## Paul Sculfor

Height 183cm / 6' 0.0"

Chest 104cm / 41"

Waist 84cm / 33"

Shoes EU/US/UK 45 / 12 / 10.5

Inseam 80cm / 31.5"

Suit size 50cm / 40"

Suit cut Regular

Neck 40cm / 15.5"

Hair Light brown

Hair length 4

Eyes Blue





## Paul Sculfor

Height 183cm / 6' 0.0"

Chest 104cm / 41"

Waist 84cm / 33"

Shoes EU/US/UK 45 / 12 / 10.5

Inseam 80cm / 31.5"

Suit size 50cm / 40"

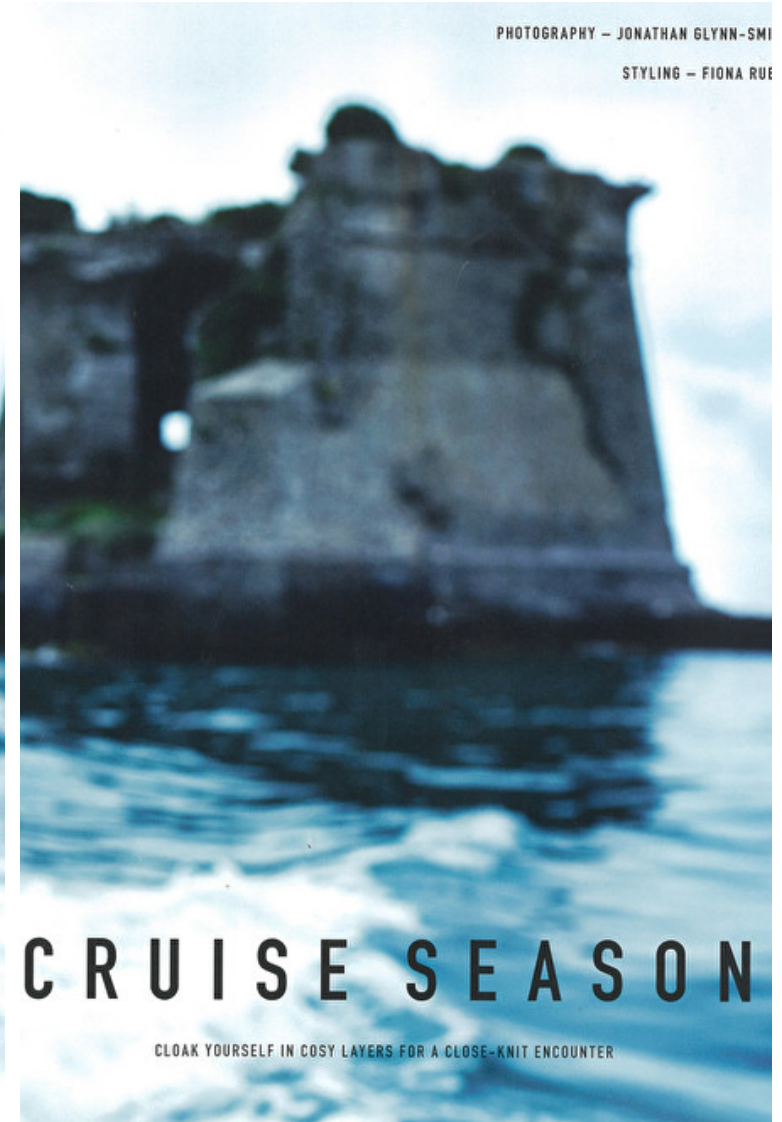
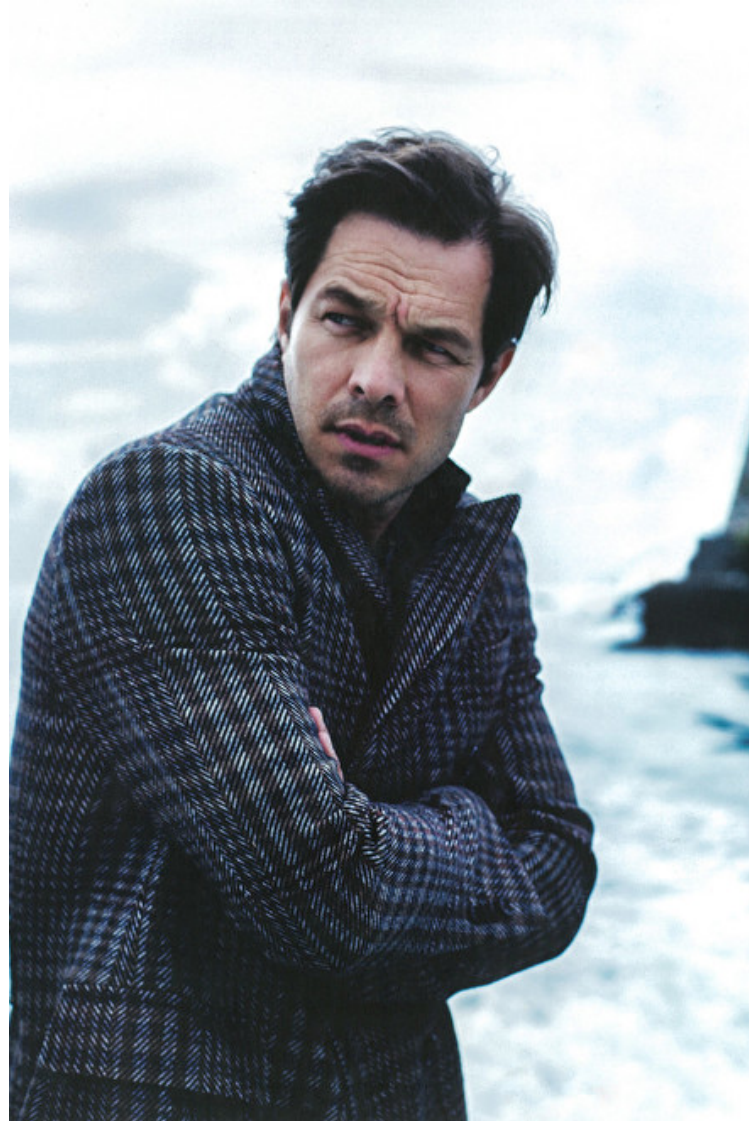
Suit cut Regular

Neck 40cm / 15.5"

Hair Light brown

Hair length 4

Eyes Blue



## Paul Sculfor

Height 183cm / 6' 0.0"

Chest 104cm / 41"

Waist 84cm / 33"

Shoes EU/US/UK 45 / 12 / 10.5

Inseam 80cm / 31.5"

Suit size 50cm / 40"

Suit cut Regular

Neck 40cm / 15.5"

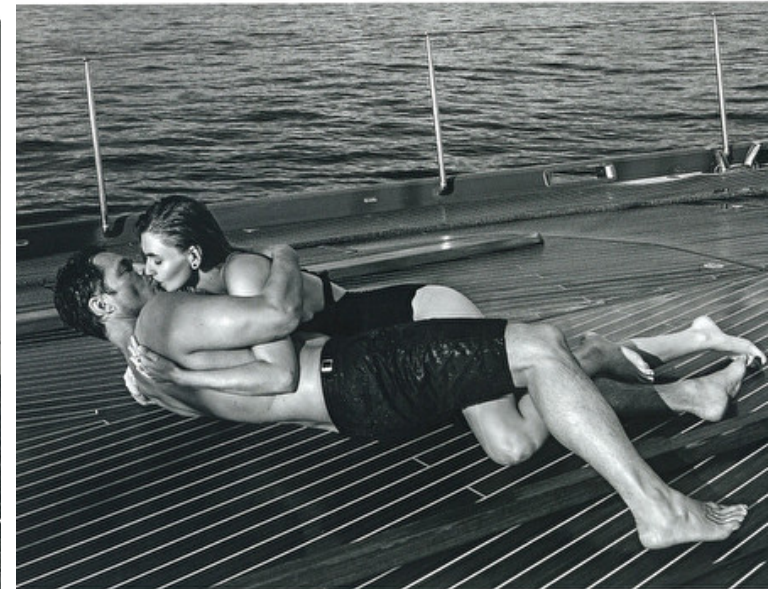
Hair Light brown

Hair length 4

Eyes Blue



*Eve wears Sensa Clava swimsuit, £265, marysia.com*



*Paul wears BullDog swimming shorts, £145, orlebarbrown.com*

# Select

MODEL MANAGEMENT

2nd floor, 77 ST. Martins Lane (entrance on Cranbourn Street) , London, WC2N 4AA, England, United Kingdom  
**Phone:** +44 (0) 20 7299 1322 **Fax:** +44 (0) 20 7299 1386 **Email:** info@selectmodel.com **Website:** https://www.selectmodel.com/

## Paul Sculfor

Height 183cm / 6' 0.0"

Chest 104cm / 41"

Waist 84cm / 33"

Shoes EU/US/UK 45 / 12 / 10.5

Inseam 80cm / 31.5"

Suit size 50cm / 40"

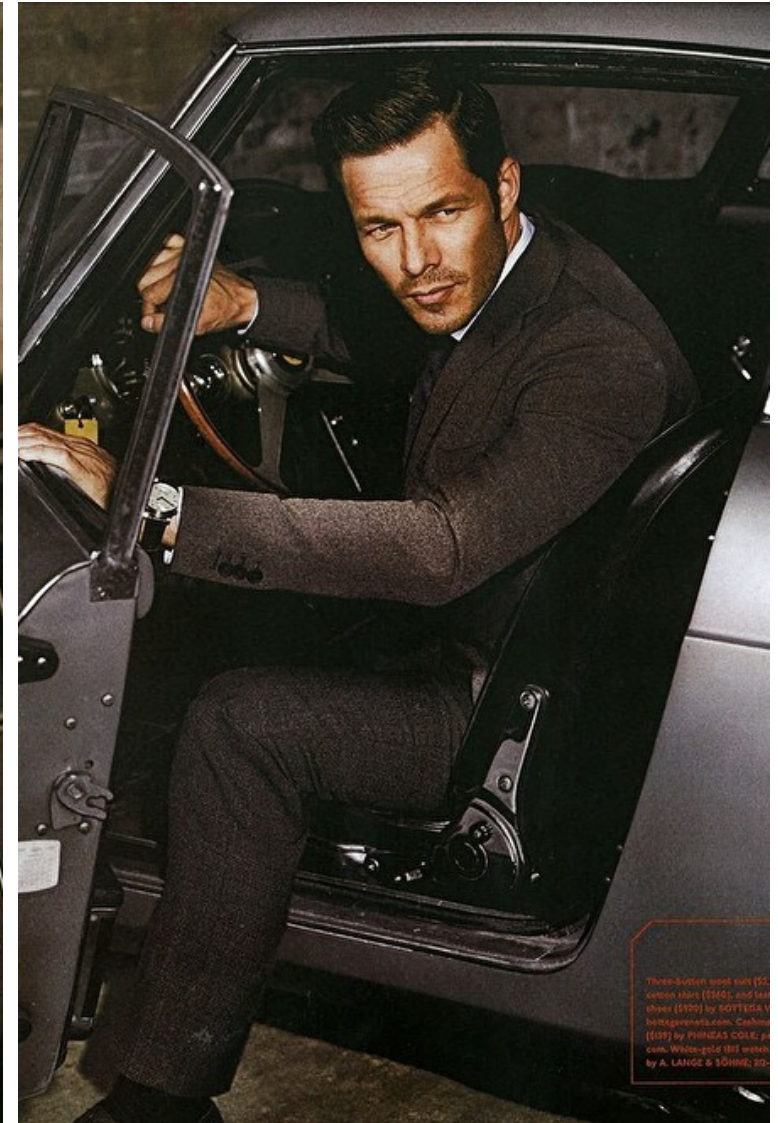
Suit cut Regular

Neck 40cm / 15.5"

Hair Light brown

Hair length 4

Eyes Blue



These photos were shot by  
Simon Ross (2001, 2002)  
Shane (2003) by SOTTEDA  
sottedeta.com, Calhoun  
(2007) by PHINEAS COLE, Jr.  
com, White-gold (81) watch  
by A. LANGE & SÖHNE; 200

# Select

MODEL MANAGEMENT

2nd floor, 77 ST. Martins Lane (entrance on Cranbourn Street) , London, WC2N 4AA, England, United Kingdom  
Phone: +44 (0) 20 7299 1322 Fax: +44 (0) 20 7299 1386 Email: info@selectmodel.com Website: https://www.selectmodel.com/

## Paul Sculfor

Height 183cm / 6' 0.0"

Chest 104cm / 41"

Waist 84cm / 33"

Shoes EU/US/UK 45 / 12 / 10.5

Inseam 80cm / 31.5"

Suit size 50cm / 40"

Suit cut Regular

Neck 40cm / 15.5"

Hair Light brown

Hair length 4

Eyes Blue



## Paul Sculfor

Height 183cm / 6' 0.0"

Chest 104cm / 41"

Waist 84cm / 33"

Shoes EU/US/UK 45 / 12 / 10.5

Inseam 80cm / 31.5"

Suit size 50cm / 40"

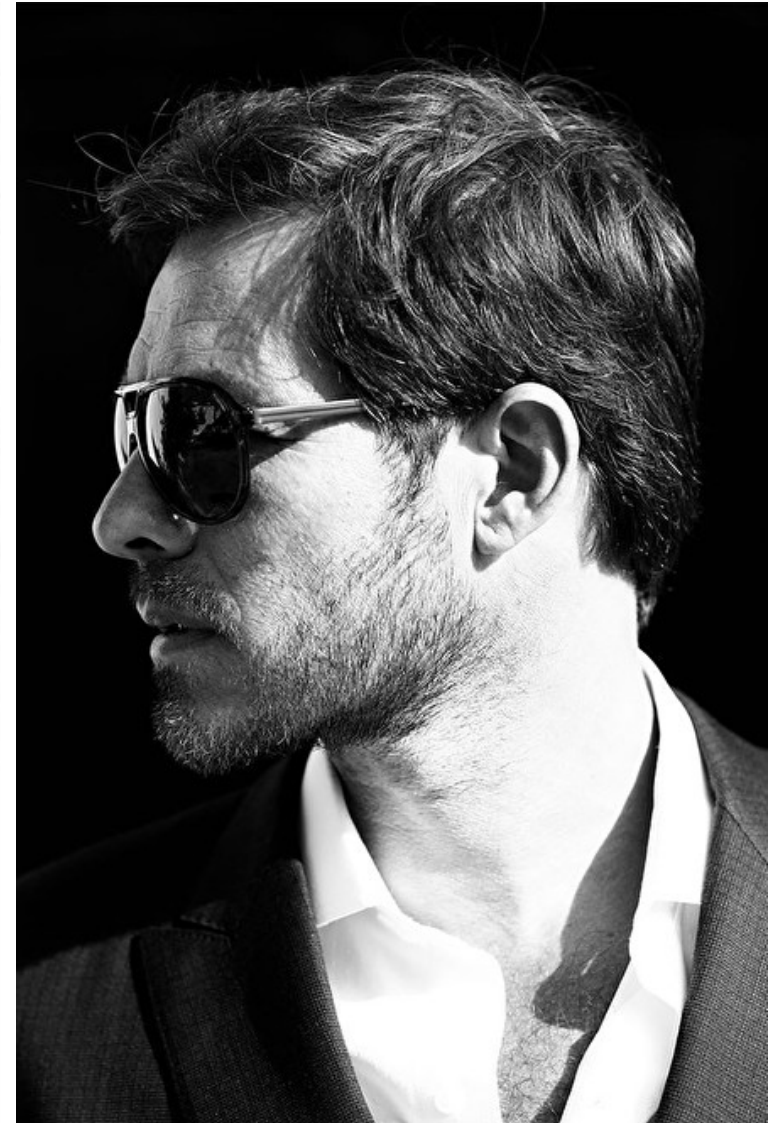
Suit cut Regular

Neck 40cm / 15.5"

Hair Light brown

Hair length 4

Eyes Blue



## Paul Sculfor

Height 183cm / 6' 0.0"

Chest 104cm / 41"

Waist 84cm / 33"

Shoes EU/US/UK 45 / 12 / 10.5

Inseam 80cm / 31.5"

Suit size 50cm / 40"

Suit cut Regular

Neck 40cm / 15.5"

Hair Light brown

Hair length 4

Eyes Blue



## Paul Sculfor

Height 183cm / 6' 0.0"

Chest 104cm / 41"

Waist 84cm / 33"

Shoes EU/US/UK 45 / 12 / 10.5

Inseam 80cm / 31.5"

Suit size 50cm / 40"

Suit cut Regular

Neck 40cm / 15.5"

Hair Light brown

Hair length 4

Eyes Blue



# Select

MODEL MANAGEMENT

2nd floor, 77 ST. Martins Lane (entrance on Cranbourn Street) , London, WC2N 4AA, England, United Kingdom  
**Phone:** +44 (0) 20 7299 1322 **Fax:** +44 (0) 20 7299 1386 **Email:** info@selectmodel.com **Website:** https://www.selectmodel.com/

## Paul Sculfor

Height 183cm / 6' 0.0"

Chest 104cm / 41"

Waist 84cm / 33"

Shoes EU/US/UK 45 / 12 / 10.5

Inseam 80cm / 31.5"

Suit size 50cm / 40"

Suit cut Regular

Neck 40cm / 15.5"

Hair Light brown

Hair length 4

Eyes Blue

