

ROBERTO ROSSELLINI

Height 191cm / 6' 3.0"

Waist 79cm / 31"

Shoes EU/US/UK 47 / 13.5 / 12

Neck 39cm / 15.5"

Hair Brown

Eyes Green



Select

MODEL MANAGEMENT

2nd floor, 77 ST. Martins Lane (entrance on Cranbourn Street) , London, WC2N 4AA, England, United Kingdom
Phone: +44 (0) 20 7299 1322 Fax: +44 (0) 20 7299 1386 Email: info@selectmodel.com Website: https://www.selectmodel.com/

ROBERTO ROSSELLINI

Height 191cm / 6' 3.0"

Waist 79cm / 31"

Shoes EU/US/UK 47 / 13.5 / 12

Neck 39cm / 15.5"

Hair Brown

Eyes Green



Select

MODEL MANAGEMENT

2nd floor, 77 ST. Martins Lane (entrance on Cranbourn Street) , London, WC2N 4AA, England, United Kingdom
Phone: +44 (0) 20 7299 1322 Fax: +44 (0) 20 7299 1386 Email: info@selectmodel.com Website: https://www.selectmodel.com/

ROBERTO ROSSELLINI

Height 191cm / 6' 3.0"

Waist 79cm / 31"

Shoes EU/US/UK 47 / 13.5 / 12

Neck 39cm / 15.5"

Hair Brown

Eyes Green



THIS PAGE: Jacket and shirt: GUCCI Shoes LARRY CLARK for DIOR HOMME
OPPOSITE PAGE: Trench coat: COMME DES GARÇONS HOMME PLUS Helmet: BERN

Select

MODEL MANAGEMENT

2nd floor, 77 ST. Martins Lane (entrance on Cranbourn Street) , London, WC2N 4AA, England, United Kingdom
Phone: +44 (0) 20 7299 1322 **Fax:** +44 (0) 20 7299 1386 **Email:** info@selectmodel.com **Website:** https://www.selectmodel.com/

ROBERTO ROSSELLINI

Height 191cm / 6' 3.0"

Waist 79cm / 31"

Shoes EU/US/UK 47 / 13.5 / 12

Neck 39cm / 15.5"

Hair Brown

Eyes Green



ROBERTO ROSSELLINI

Height 191cm / 6' 3.0"

Waist 79cm / 31"

Shoes EU/US/UK 47 / 13.5 / 12

Neck 39cm / 15.5"

Hair Brown

Eyes Green



Select

MODEL MANAGEMENT

2nd floor, 77 ST. Martins Lane (entrance on Cranbourn Street) , London, WC2N 4AA, England, United Kingdom
Phone: +44 (0) 20 7299 1322 **Fax:** +44 (0) 20 7299 1386 **Email:** info@selectmodel.com **Website:** https://www.selectmodel.com/

ROBERTO ROSSELLINI

Height 191cm / 6' 3.0"

Waist 79cm / 31"

Shoes EU/US/UK 47 / 13.5 / 12

Neck 39cm / 15.5"

Hair Brown

Eyes Green



Select

MODEL MANAGEMENT

2nd floor, 77 ST. Martins Lane (entrance on Cranbourn Street) , London, WC2N 4AA, England, United Kingdom
Phone: +44 (0) 20 7299 1322 **Fax:** +44 (0) 20 7299 1386 **Email:** info@selectmodel.com **Website:** https://www.selectmodel.com/

ROBERTO ROSSELLINI

Height 191cm / 6' 3.0"

Waist 79cm / 31"

Shoes EU/US/UK 47 / 13.5 / 12

Neck 39cm / 15.5"

Hair Brown

Eyes Green



Select

MODEL MANAGEMENT

2nd floor, 77 ST. Martins Lane (entrance on Cranbourn Street) , London, WC2N 4AA, England, United Kingdom
Phone: +44 (0) 20 7299 1322 **Fax:** +44 (0) 20 7299 1386 **Email:** info@selectmodel.com **Website:** https://www.selectmodel.com/

ROBERTO ROSSELLINI

Height 191cm / 6' 3.0"

Waist 79cm / 31"

Shoes EU/US/UK 47 / 13.5 / 12

Neck 39cm / 15.5"

Hair Brown

Eyes Green



Select

MODEL MANAGEMENT

2nd floor, 77 ST. Martins Lane (entrance on Cranbourn Street) , London, WC2N 4AA, England, United Kingdom
Phone: +44 (0) 20 7299 1322 **Fax:** +44 (0) 20 7299 1386 **Email:** info@selectmodel.com **Website:** https://www.selectmodel.com/

ROBERTO ROSSELLINI

Height 191cm / 6' 3.0"

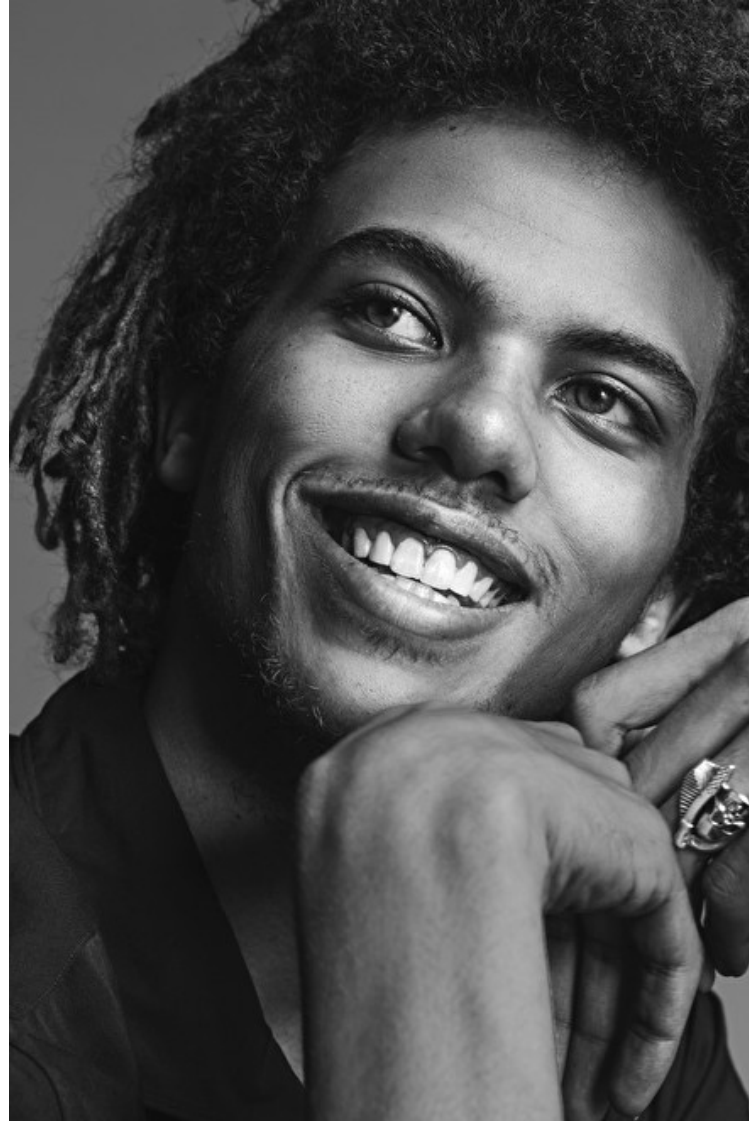
Waist 79cm / 31"

Shoes EU/US/UK 47 / 13.5 / 12

Neck 39cm / 15.5"

Hair Brown

Eyes Green



Select

MODEL MANAGEMENT

2nd floor, 77 ST. Martins Lane (entrance on Cranbourn Street) , London, WC2N 4AA, England, United Kingdom
Phone: +44 (0) 20 7299 1322 **Fax:** +44 (0) 20 7299 1386 **Email:** info@selectmodel.com **Website:** https://www.selectmodel.com/

ROBERTO ROSSELLINI

Height 191cm / 6' 3.0"

Waist 79cm / 31"

Shoes EU/US/UK 47 / 13.5 / 12

Neck 39cm / 15.5"

Hair Brown

Eyes Green



Select

MODEL MANAGEMENT

2nd floor, 77 ST. Martins Lane (entrance on Cranbourn Street) , London, WC2N 4AA, England, United Kingdom
Phone: +44 (0) 20 7299 1322 **Fax:** +44 (0) 20 7299 1386 **Email:** info@selectmodel.com **Website:** https://www.selectmodel.com/

ROBERTO ROSSELLINI

Height 191cm / 6' 3.0"

Waist 79cm / 31"

Shoes EU/US/UK 47 / 13.5 / 12

Neck 39cm / 15.5"

Hair Brown

Eyes Green



Select

MODEL MANAGEMENT

2nd floor, 77 ST. Martins Lane (entrance on Cranbourn Street), London, WC2N 4AA, England, United Kingdom
Phone: +44 (0) 20 7299 1322 **Fax:** +44 (0) 20 7299 1386 **Email:** info@selectmodel.com **Website:** https://www.selectmodel.com/

ROBERTO ROSSELLINI

Height 191cm / 6' 3.0"

Waist 79cm / 31"

Shoes EU/US/UK 47 / 13.5 / 12

Neck 39cm / 15.5"

Hair Brown

Eyes Green



Just Don't Call Me a Model

In an era of glass ceilings yet to be broken, one of the few professions in which women are generally guaranteed to receive better compensation and more accolades than their male counterparts is modeling. There is no IV holy trinity akin to Naomi Campbell, Christy Turlington, and Linda Evangelista, and you would be hard-pressed to find a male equivalent to Kendall Jenner or Gigi Hadid. (With more than 2 million Instagram followers, Lucky Blue Smith has about 10 percent of the reach of Hadid.) Still, an intrepid group of guys is getting noticed. Some have fashion in their blood: Chase Hill, 17, followed in the footsteps of his model sisters Mackinley and Taylor. Others, like Cody Lohan, 20, who got an

agent thanks to an Instagram post from sister Lindsay, boast recognizable surnames. The 23-year-old photographer Roberto Rosellini, who was scouted on the streets of New York, sought the counsel of his mother, Isabella, before moving to the other side of the camera.

For most of them, modeling is a way to draw attention to other projects. Thirty-year-old Will Peltz, brother of actress Nicola, squares in shoots with Calvin Klein between films. Nyima Wang, 20, the son of the 1990s supermodel Trish Goff and a new favorite of the photographer Steven Meisel, considers himself "more a woodworker, honestly, than a model." Luka Sabbat, 18, a self-described "stylist-entrepreneur-champion and

model at request," was discovered at 16, but was initially wary of the industry: "I didn't fuck with it—it looked wack," he recalls. He's since come around (with a gentle nudge from his father), walking for Yeezy and popping up in a Tommy Hilfinger campaign. Meanwhile, Brandon Thomas Lee, 20, the son of Pamela Anderson and Tommy Lee, and a star of Dolce & Gabbana's spring campaign, didn't need any convincing. "It's great to have your face plastered on stuff so everyone can get to know you," he says. "People would say, 'Okay, for the last year, you've done more modeling work than acting.' But I like to classify myself as just an actor. What I do to achieve that can go a thousand different ways." VANESSA LAWRENCE

With their good looks—and even better genes—these guys are definitely not pose

From left: Chase Hill wears Coach 1941 jacket, Versace shirt, A.P.C. top and necktie; M&S/M jeans; L. Erickson USA scarf; Missoni knit scarf; Cody Lohan wears Prada coat, jacket, and shorts; Luka Sabbat wears Burberry sweater, Vince necktie, Dior Homme pants; JW Anderson coat (Lohan wears); Lanvin necktie; Mensa Ward wears Gosha Rubchinsky top and shorts; Bottega Veneta shirt; Will Peltz wears Diesel Van Noyen trench and T-shirt; Bottega Veneta shirt; Project shirt; Marc Jacobs pants; Raf Simons belt; Steve Nouri wears a necktie; Nyima Wang wears Roberto Rosellini's Loden jacket, top, and pants; Bottega Veneta shirt; Maison Margiela necktie; Steven Meisel wears Brandon Thomas Lee wears Balenciaga coat, shirt, and trousers; Bulgari watch; his own necktie. For stores, prices, and more go to img.com where to buy April 2017.

Styling by John Radford for Orbe at See Management.

Photographs by ANDREAS LASZLO KONRAD. Styled by CLARE BYRNE

04.2017 WTMG

ROBERTO ROSSELLINI

Height 191cm / 6' 3.0"

Waist 79cm / 31"

Shoes EU/US/UK 47 / 13.5 / 12

Neck 39cm / 15.5"

Hair Brown

Eyes Green

