

Select

MODEL MANAGEMENT

7250 Melrose Ave Suite 4, Los Angeles, 90046, California, United States

Phone: (213) 454-0991 Email: info.losangeles@selectmodel.com Website: <https://selectmodel.com/>

Keith Carlos

Height 188cm / 6' 2.0"

Chest 102cm / 40"

Waist 81cm / 32"

Shoes EU/US/UK 45 / 12 / 10.5

Eyes Brown

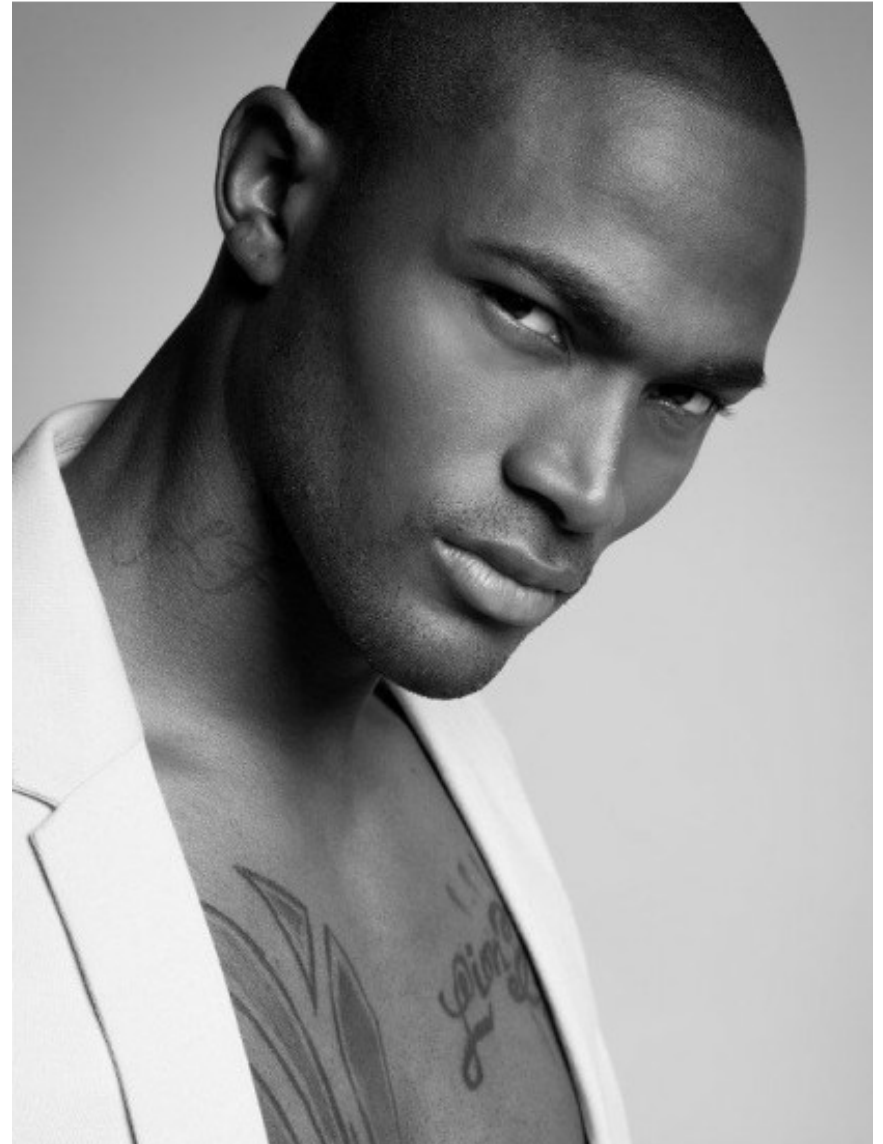
Hair Black

Inseam 81cm / 32"

Neck 41cm / 16"

Suit size 50cm / 40"

Suit cut Regular



Select

MODEL MANAGEMENT

7250 Melrose Ave Suite 4, Los Angeles, 90046, California, United States

Phone: (213) 454-0991 Email: info.losangeles@selectmodel.com Website: <https://selectmodel.com/>

Keith Carlos

Height 188cm / 6' 2.0"

Chest 102cm / 40"

Waist 81cm / 32"

Shoes EU/US/UK 45 / 12 / 10.5

Eyes Brown

Hair Black

Inseam 81cm / 32"

Neck 41cm / 16"

Suit size 50cm / 40"

Suit cut Regular



Select

MODEL MANAGEMENT

7250 Melrose Ave Suite 4, Los Angeles, 90046, California, United States

Phone: (213) 454-0991 Email: info.losangeles@selectmodel.com Website: <https://selectmodel.com/>

Keith Carlos

Height 188cm / 6' 2.0"

Chest 102cm / 40"

Waist 81cm / 32"

Shoes EU/US/UK 45 / 12 / 10.5

Eyes Brown

Hair Black

Inseam 81cm / 32"

Neck 41cm / 16"

Suit size 50cm / 40"

Suit cut Regular



Select

MODEL MANAGEMENT

7250 Melrose Ave Suite 4, Los Angeles, 90046, California, United States

Phone: (213) 454-0991 Email: info.losangeles@selectmodel.com Website: <https://selectmodel.com/>

Keith Carlos

Height 188cm / 6' 2.0"

Chest 102cm / 40"

Waist 81cm / 32"

Shoes EU/US/UK 45 / 12 / 10.5

Eyes Brown

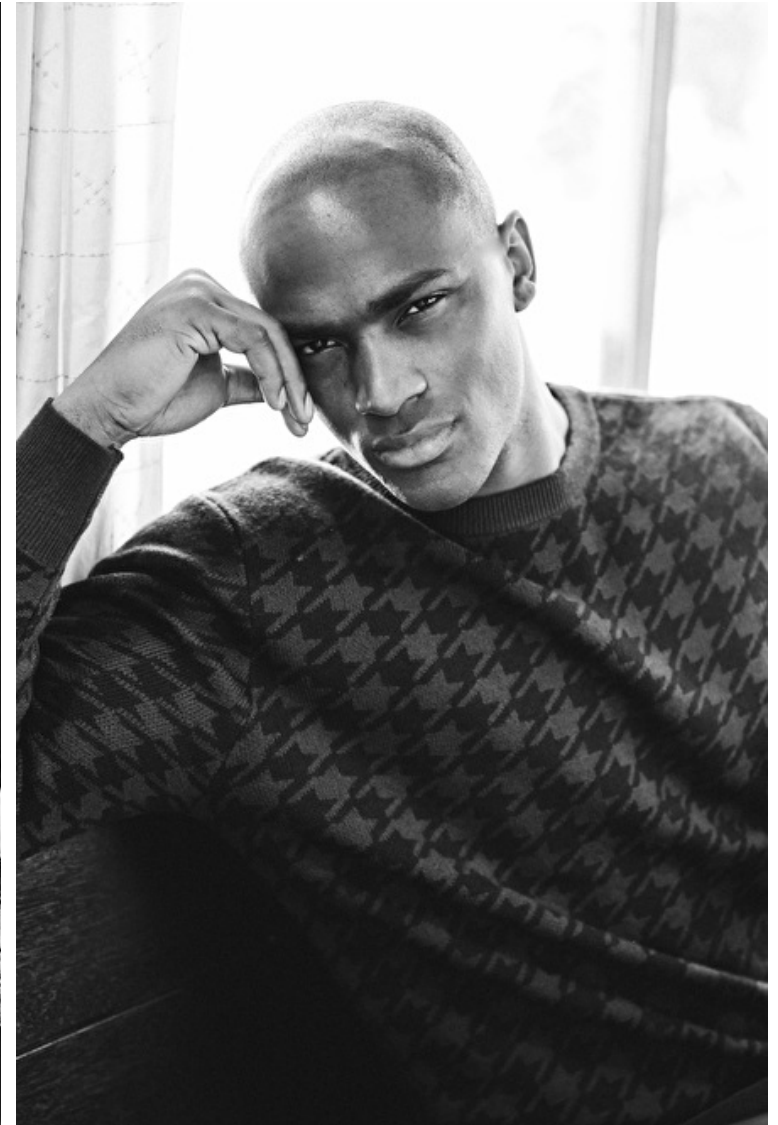
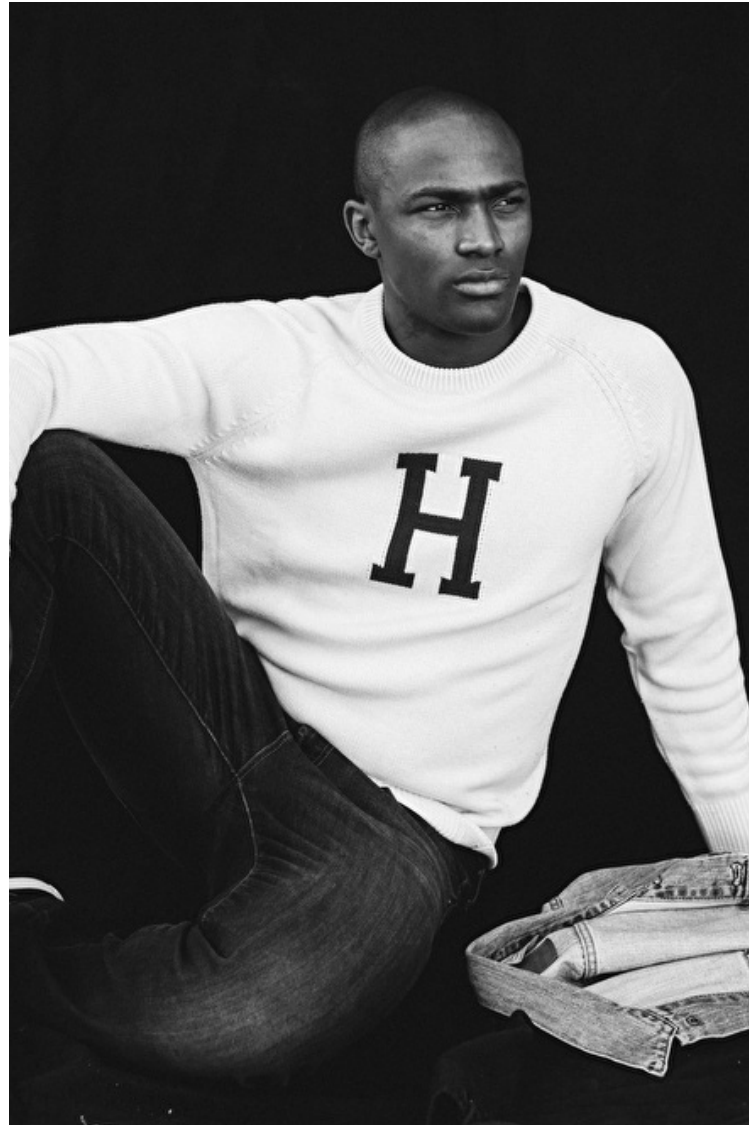
Hair Black

Inseam 81cm / 32"

Neck 41cm / 16"

Suit size 50cm / 40"

Suit cut Regular



Select

MODEL MANAGEMENT

7250 Melrose Ave Suite 4, Los Angeles, 90046, California, United States

Phone: (213) 454-0991 Email: info.losangeles@selectmodel.com Website: https://selectmodel.com/

Keith Carlos

Height 188cm / 6' 2.0"

Chest 102cm / 40"

Waist 81cm / 32"

Shoes EU/US/UK 45 / 12 / 10.5

Eyes Brown

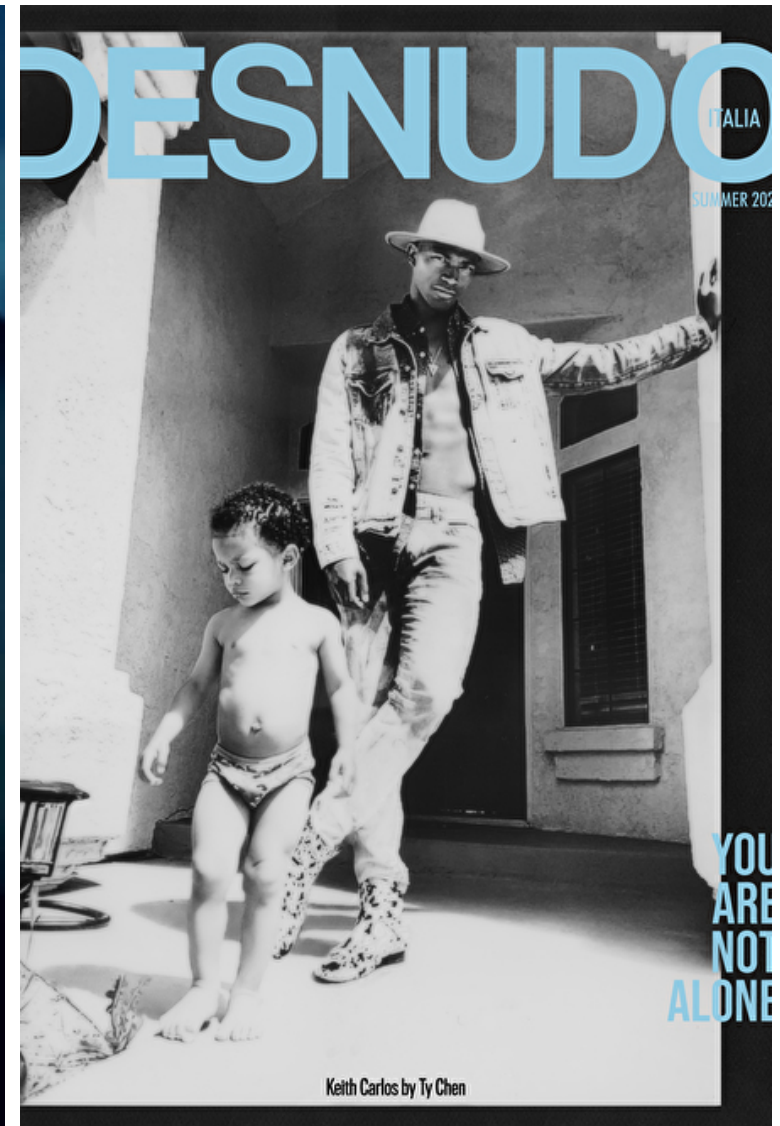
Hair Black

Inseam 81cm / 32"

Neck 41cm / 16"

Suit size 50cm / 40"

Suit cut Regular



Select

MODEL MANAGEMENT

7250 Melrose Ave Suite 4, Los Angeles, 90046, California, United States

Phone: (213) 454-0991 Email: info.losangeles@selectmodel.com Website: <https://selectmodel.com/>

Keith Carlos

Height 188cm / 6' 2.0"

Chest 102cm / 40"

Waist 81cm / 32"

Shoes EU/US/UK 45 / 12 / 10.5

Eyes Brown

Hair Black

Inseam 81cm / 32"

Neck 41cm / 16"

Suit size 50cm / 40"

Suit cut Regular



Select

MODEL MANAGEMENT

7250 Melrose Ave Suite 4, Los Angeles, 90046, California, United States

Phone: (213) 454-0991 Email: info.losangeles@selectmodel.com Website: <https://selectmodel.com/>

Keith Carlos

Height 188cm / 6' 2.0"

Chest 102cm / 40"

Waist 81cm / 32"

Shoes EU/US/UK 45 / 12 / 10.5

Eyes Brown

Hair Black

Inseam 81cm / 32"

Neck 41cm / 16"

Suit size 50cm / 40"

Suit cut Regular



Select

MODEL MANAGEMENT

7250 Melrose Ave Suite 4, Los Angeles, 90046, California, United States

Phone: (213) 454-0991 Email: info.losangeles@selectmodel.com Website: <https://selectmodel.com/>

Keith Carlos

Height 188cm / 6' 2.0"

Chest 102cm / 40"

Waist 81cm / 32"

Shoes EU/US/UK 45 / 12 / 10.5

Eyes Brown

Hair Black

Inseam 81cm / 32"

Neck 41cm / 16"

Suit size 50cm / 40"

Suit cut Regular



Select

MODEL MANAGEMENT

7250 Melrose Ave Suite 4, Los Angeles, 90046, California, United States

Phone: (213) 454-0991 Email: info.losangeles@selectmodel.com Website: https://selectmodel.com/

Keith Carlos

Height 188cm / 6' 2.0"

Chest 102cm / 40"

Waist 81cm / 32"

Shoes EU/US/UK 45 / 12 / 10.5

Eyes Brown

Hair Black

Inseam 81cm / 32"

Neck 41cm / 16"

Suit size 50cm / 40"

Suit cut Regular



Select

MODEL MANAGEMENT

7250 Melrose Ave Suite 4, Los Angeles, 90046, California, United States

Phone: (213) 454-0991 Email: info.losangeles@selectmodel.com Website: <https://selectmodel.com/>

Keith Carlos

Height 188cm / 6' 2.0"

Chest 102cm / 40"

Waist 81cm / 32"

Shoes EU/US/UK 45 / 12 / 10.5

Eyes Brown

Hair Black

Inseam 81cm / 32"

Neck 41cm / 16"

Suit size 50cm / 40"

Suit cut Regular



Turt Neck: DAMEL
Divided Denim Top: NARRI DAMEL
Tan Coat: CU
Khaki Pants: JFOR:EU
Turt Top

26 NOV 2019

Select

MODEL MANAGEMENT

7250 Melrose Ave Suite 4, Los Angeles, 90046, California, United States

Phone: (213) 454-0991 Email: info.losangeles@selectmodel.com Website: <https://selectmodel.com/>

Keith Carlos

Height 188cm / 6' 2.0"

Chest 102cm / 40"

Waist 81cm / 32"

Shoes EU/US/UK 45 / 12 / 10.5

Eyes Brown

Hair Black

Inseam 81cm / 32"

Neck 41cm / 16"

Suit size 50cm / 40"

Suit cut Regular



Select

MODEL MANAGEMENT

7250 Melrose Ave Suite 4, Los Angeles, 90046, California, United States

Phone: (213) 454-0991 **Email:** info.losangeles@selectmodel.com **Website:** <https://selectmodel.com/>

Keith Carlos

Height 188cm / 6' 2.0"

Chest 102cm / 40"

Waist 81cm / 32"

Shoes EU/US/UK 45 / 12 / 10.5

Eyes Brown

Hair Black

Inseam 81cm / 32"

Neck 41cm / 16"

Suit size 50cm / 40"

Suit cut Regular



Select

MODEL MANAGEMENT

7250 Melrose Ave Suite 4, Los Angeles, 90046, California, United States

Phone: (213) 454-0991 Email: info.losangeles@selectmodel.com Website: <https://selectmodel.com/>

Keith Carlos

Height 188cm / 6' 2.0"

Chest 102cm / 40"

Waist 81cm / 32"

Shoes EU/US/UK 45 / 12 / 10.5

Eyes Brown

Hair Black

Inseam 81cm / 32"

Neck 41cm / 16"

Suit size 50cm / 40"

Suit cut Regular



Keith Carlos

Height 188cm / 6' 2.0"

Chest 102cm / 40"

Waist 81cm / 32"

Shoes EU/US/UK 45 / 12 / 10.5

Eyes Brown

Hair Black

Inseam 81cm / 32"

Neck 41cm / 16"

Suit size 50cm / 40"

Suit cut Regular



Select

MODEL MANAGEMENT

7250 Melrose Ave Suite 4, Los Angeles, 90046, California, United States

Phone: (213) 454-0991 Email: info.losangeles@selectmodel.com Website: <https://selectmodel.com/>

Keith Carlos

Height 188cm / 6' 2.0"

Chest 102cm / 40"

Waist 81cm / 32"

Shoes EU/US/UK 45 / 12 / 10.5

Eyes Brown

Hair Black

Inseam 81cm / 32"

Neck 41cm / 16"

Suit size 50cm / 40"

Suit cut Regular



Keith Carlos

Height 188cm / 6' 2.0"

Chest 102cm / 40"

Waist 81cm / 32"

Shoes EU/US/UK 45 / 12 / 10.5

Eyes Brown

Hair Black

Inseam 81cm / 32"

Neck 41cm / 16"

Suit size 50cm / 40"

Suit cut Regular



Cover Story

Shariah: You've had a great amount of success on and off the field. What accomplishment are you most proud of?

Keith: Being the first in my family to graduate from college and break that curse. To accomplish that I thought it was amazing.

Shariah: As a first generation graduate, I can relate to that! You were a star athlete in college and played on a professional football team. What made you pursue modeling through America's Next Top Model?

Keith: I was on the Giants and my PR rep at the time knew a casting director for the show. She knew I wanted to get into entertainment along with football and she said she could send over a headshot. She sent it over and they loved me. I ended up getting released from the Giants from an injury and flew out to L.A the week after that for the finals

for America's Next Top Model. So, I didn't have the traditional tryouts, where you go out to the casting call. It was more so just a Skype interview.

Shariah: So, did you feel like competing in this competition replaced the thrill of football and competing?

Keith: No, not at all. Financially, yes. It put me in a situation to be stable financially and it gave me a platform. But, the thrill no. Nothing could ever touch that thrill, although modeling is competitive. It's not as physical as football so it's a different kind of adrenaline.

Shariah: Makes sense. I was wondering because such a pretty face and playing football – I know you hear that a lot (we laugh) and then transitioning from football to modeling. It makes you wonder if this was supposed to be your calling. No



way such a pretty face could be that physical.

Keith: It's funny you say that. We used to box a lot as well – for money – in storm rooms. So, I've always been into boxing too.

Shariah: Wow, so you're literally a walking example of "don't let the pretty face fool you!" Would you say this career path in modeling was destined for you?

Keith: Yes, most definitely. It's crazy my teammates would always call me America's Next Top Model. Because I was always the one – even before I became a Nipe – I was always the one who'd color coordinate, wearing suits etc. I get that from my grandfather.

Shariah: Most people from your background aren't usually as fortunate to make it out of the negative environment in which they live. What age did you begin to take ownership of your own destiny?

Keith Carlos: Growing up I always felt out of place. I didn't know why, where or for what. But I'd say I began to take responsibility once my mother... wait – my mother was incarcerated. It was when my best friend passed away. I went to visit my mother and she was basically crying about how she didn't want me to end up like him. And that kind of struck something into me. I was not enrolled into school at the time. So, I ended up getting back into school with the help of

Select

MODEL MANAGEMENT

7250 Melrose Ave Suite 4, Los Angeles, 90046, California, United States

Phone: (213) 454-0991 Email: info.losangeles@selectmodel.com Website: <https://selectmodel.com/>

Keith Carlos

Height 188cm / 6' 2.0"

Chest 102cm / 40"

Waist 81cm / 32"

Shoes EU/US/UK 45 / 12 / 10.5

Eyes Brown

Hair Black

Inseam 81cm / 32"

Neck 41cm / 16"

Suit size 50cm / 40"

Suit cut Regular



Select

MODEL MANAGEMENT

7250 Melrose Ave Suite 4, Los Angeles, 90046, California, United States
Phone: (213) 454-0991 **Email:** info.losangeles@selectmodel.com **Website:** https://selectmodel.com/

Keith Carlos

Height 188cm / 6' 2.0"

Chest 102cm / 40"

Waist 81cm / 32"

Shoes EU/US/UK 45 / 12 / 10.5

Eyes Brown

Hair Black

Inseam 81cm / 32"

Neck 41cm / 16"

Suit size 50cm / 40"

Suit cut Regular



YOU MAY RECOGNIZE ONE, OR BOTH OF THESE MEN FROM AMERICAS NEXT TOP MODEL, NEW GIRL, YOUNG AND THE RESTLESS, BOLD AND THE BEAUTIFUL, FACE-OFF, STITCHER, MEN'S WAREHOUSE, ROBINS JEANS, OR MOST RECENTLY CARDI B'S NEW MUSIC VIDEO "BE CAREFUL". THESE TWO YOUNG MEN, KEITH CARLOS, AND MATTHEW SMITH HAVE HAD QUITE THE SUCCESS WITHIN THE ENTERTAINMENT INDUSTRY. HOWEVER, WITH THAT SAID, ONE CANNOT HELP BUT ASK, HOW MUCH OF THIS "SUCCESS" IS BASED OFF OF SOMETHING AS SHALLOW AND SIMPLE AS APPEARANCE? VS, SOMETHING THAT IS TRULY ADMIRABLE, SOMETHING THAT LASTS SUCH AS HEART, SOUL, CHARISMA, PASSION? THEIR NEW UP-COMING TV SERIES "ROLE MODELS", MAY ANSWER JUST THAT!

Role Models is a non-scripted TV series that will follow what may seem like a group of stereotypical male models from one destination to another. The catch/hook of this show however lies within their mission. Through this TV series, Keith Carlos, and Matthew Smith aim to reinstate the true definition of a Role Model. They plan to achieve this, not through boasting over their own actions, nor the actions of their cast members, but rather by seeking out and shining light on the everyday heroes of the world.

"I believe I can speak for Keith and I both when I say that we live in a very strange and confused world. Social media has in many ways corrupted and altered our society. Through its uncensored and vastly accessible content, I believe that the line between good and bad, positive and negative, admirable and trashy has been very blurred. Keith and I both feel that it's time for someone to reinstate and highlight what it means to TRULY be a role model. There are a TON of

them out there, and most of them aren't on social media or seeking attention for their efforts." - Matthew Smith

The show concept Role Models truly evolves from an admirable humanitarianism mission to something of great interest and "watch worthy", through its creative and forward thinking involvement of brand and company endorsements.

"Brands and companies spend millions and millions a year on social marketing. Through my success within the entertainment industry, I have become more and more aware of the extremely large budgets that are being spent on social platform marketing. It makes sense, there is no denying that it successfully achieves brand awareness, and I don't believe anyone would argue that people spend more of their time scrolling through social media than they do watching commercials on television. Matthew and I saw this as an opportunity. Through jointed efforts within our cast, our social outreach

Bella

issue #171

106



Select

MODEL MANAGEMENT

7250 Melrose Ave Suite 4, Los Angeles, 90046, California, United States

Phone: (213) 454-0991 Email: info.losangeles@selectmodel.com Website: <https://selectmodel.com/>

Keith Carlos

Height 188cm / 6' 2.0"

Chest 102cm / 40"

Waist 81cm / 32"

Shoes EU/US/UK 45 / 12 / 10.5

Eyes Brown

Hair Black

Inseam 81cm / 32"

Neck 41cm / 16"

Suit size 50cm / 40"

Suit cut Regular



Select

MODEL MANAGEMENT

7250 Melrose Ave Suite 4, Los Angeles, 90046, California, United States

Phone: (213) 454-0991 **Email:** info.losangeles@selectmodel.com **Website:** <https://selectmodel.com/>

Keith Carlos

Height 188cm / 6' 2.0"

Chest 102cm / 40"

Waist 81cm / 32"

Shoes EU/US/UK 45 / 12 / 10.5

Eyes Brown

Hair Black

Inseam 81cm / 32"

Neck 41cm / 16"

Suit size 50cm / 40"

Suit cut Regular

