

Select

MODEL MANAGEMENT

1400 Alton Rd Suite 103, Miami Beach, 33139, Florida, United States

Phone: (305) 672-6342 Fax: (305) 672-1749 Email: info.miami@selectmodel.com Website: <https://www.selectmodel.com/>

MARIO

Height 180cm / 5' 11.0"

Waist 76cm / 30"

Shoes EU/US/UK 43.5 / 10.5 / 9

Eyes Brown

Hair Black

Inseam 30cm / 12"

Neck 38cm / 15"

Sleeve 84cm / 33"

Suit size 38cm / 28"

Suit cut Regular



Select

MODEL MANAGEMENT

1400 Alton Rd Suite 103, Miami Beach, 33139, Florida, United States

Phone: (305) 672-6342 Fax: (305) 672-1749 Email: info.miami@selectmodel.com Website: <https://www.selectmodel.com/>

MARIO

Height 180cm / 5' 11.0"

Waist 76cm / 30"

Shoes EU/US/UK 43.5 / 10.5 / 9

Eyes Brown

Hair Black

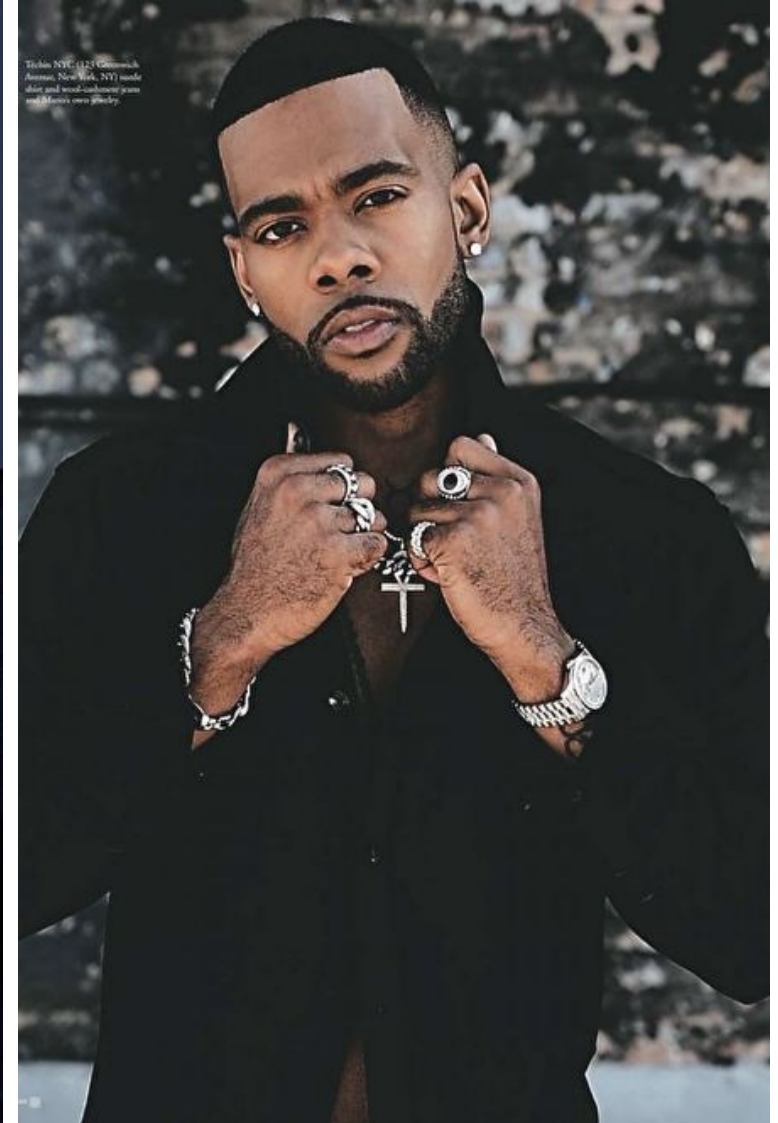
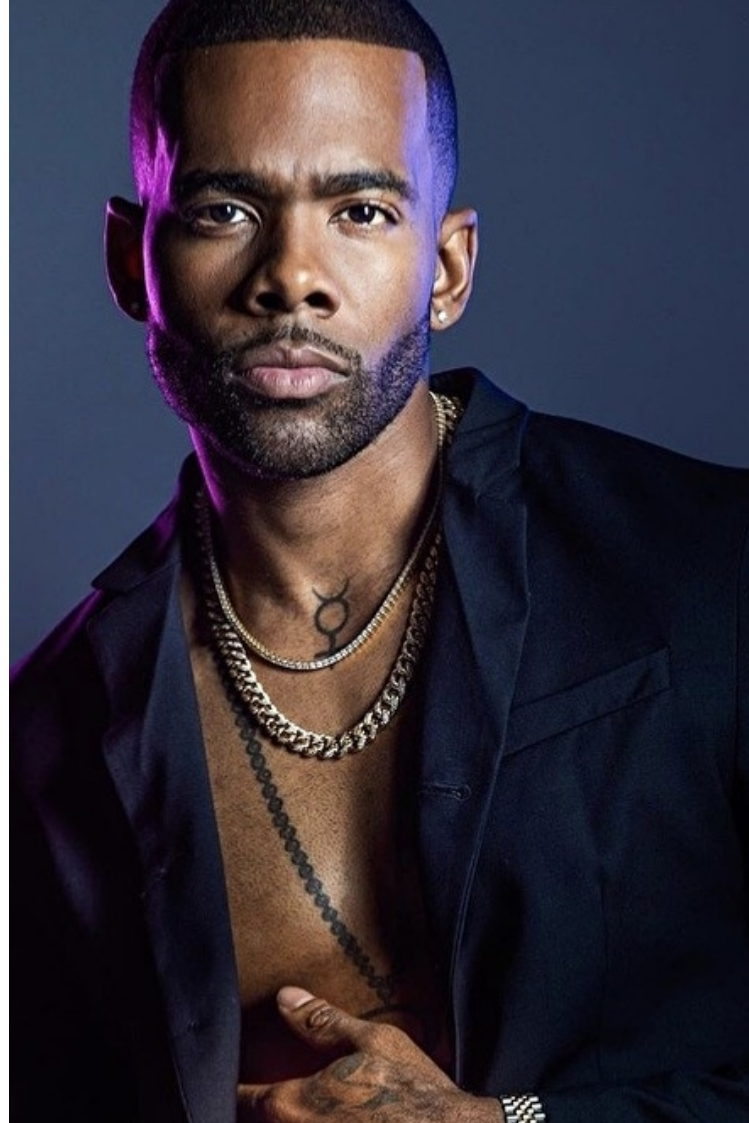
Inseam 30cm / 12"

Neck 38cm / 15"

Sleeve 84cm / 33"

Suit size 38cm / 28"

Suit cut Regular



Select

MODEL MANAGEMENT

1400 Alton Rd Suite 103, Miami Beach, 33139, Florida, United States

Phone: (305) 672-6342 Fax: (305) 672-1749 Email: info.miami@selectmodel.com Website: <https://www.selectmodel.com/>

MARIO

Height 180cm / 5' 11.0"

Waist 76cm / 30"

Shoes EU/US/UK 43.5 / 10.5 / 9

Eyes Brown

Hair Black

Inseam 30cm / 12"

Neck 38cm / 15"

Sleeve 84cm / 33"

Suit size 38cm / 28"

Suit cut Regular



Select

MODEL MANAGEMENT

1400 Alton Rd Suite 103, Miami Beach, 33139, Florida, United States

Phone: (305) 672-6342 Fax: (305) 672-1749 Email: info.miami@selectmodel.com Website: <https://www.selectmodel.com/>

MARIO

Height 180cm / 5' 11.0"

Waist 76cm / 30"

Shoes EU/US/UK 43.5 / 10.5 / 9

Eyes Brown

Hair Black

Inseam 30cm / 12"

Neck 38cm / 15"

Sleeve 84cm / 33"

Suit size 38cm / 28"

Suit cut Regular



MARIO

Height 180cm / 5' 11.0"

Waist 76cm / 30"

Shoes EU/US/UK 43.5 / 10.5 / 9

Eyes Brown

Hair Black

Inseam 30cm / 12"

Neck 38cm / 15"

Sleeve 84cm / 33"

Suit size 38cm / 28"

Suit cut Regular



Tiekin NYC (123 Greenwich Avenue, New York, NY) made shirt and wood buttoned jeans and Mario's own jewelry

THE URBAN SOPHISTICATE

Empire star and indie R&B hit-maker Mario gets deep

By David Himmel / Photography by Anthony Tablier

Wardrobe Director Mark Gill / Grooming Rochella Uribe / Talent Liaison Amaya Jackson

Mario greets me like we are old friends. He steps off the elevator into the lobby of the monstrous and modern high-rise he's calling home while filming the final season of the hit television show *Empire* bundled in a hoodie and bomber jacket with his year-and-a-half-old pit bull terrier, Halle, on a leash. It's time for her evening potty break. We pace back and forth on the small patch of grass outside of the South Loop building while Halle sniffs around for the good spot. Although I am the interviewer, Mario asks the first questions. How was my ride? How long have I been a writer? What kind of writing do I do, other than profiles on people like him? The actor/musician/writer/producer wants to know the person he is going to spend a Friday night talking to.

Unlike Halle, Mario never succumbs to just going through the motions.

Upstairs, with Halle settled sweetly at my feet, it is my turn to ask the questions. I start with the one most burning: After the enormous amount of drama *Empire* saw last season, where does it go next?

"You have to push the bar," Mario says. "To go six seasons is amazing, especially when you're playing with the concept of music and the corruption that comes with it. You really have hard story arcs to continue. The uneasiness is in the fact that the Lyon family is broken apart but is still very influential in each other's decisions,

desires and fears. Everyone still has that passion for music and that passion for winning."

If you happen not to be one of the more than six million viewers tuning in to watch *Empire* each week, it focuses on Empire Entertainment, a fictional hip-hop record label, the Lyon family members who own it, and the fight to control it and its artists. Mario, whose real name is Mario Barrett, joined the cast as a guest star in Season 5 but was promoted to a regular for this final season. Mario portrays Devon, an up-and-coming hip-hop artist discovered by matriarch "Cookie" Lyon (Taraji P. Henson). His is a rags-to-riches story that is not a far cry from Mario's own.

"Of course, there's a lot of missing intricate pieces," Mario says. "The things that are most triggering to me are things like feeling I have no say in my creative integrity. It's something a lot of artists face and something I faced a lot of times in my career until becoming an independent artist a couple of years ago."

The night we're speaking is the exact one-year anniversary of the release of Mario's last album, *Dancing Shadows*. It was his first independent project through his own label, New Citizen, and the best musical experience of his life. The album debuted at No. 1 on the iTunes R&B chart. He's been busy since. Alongside *Empire*, he starred as Benny Coffin in FOX's production of *Rent: Live*. And now he's embracing his biggest moment yet.

Select

MODEL MANAGEMENT

1400 Alton Rd Suite 103, Miami Beach, 33139, Florida, United States
Phone: (305) 672-6342 Fax: (305) 672-1749 Email: info.miami@selectmodel.com Website: https://www.selectmodel.com/

MARIO

Height 180cm / 5' 11.0"

Waist 76cm / 30"

Shoes EU/US/UK 43.5 / 10.5 / 9

Eyes Brown

Hair Black

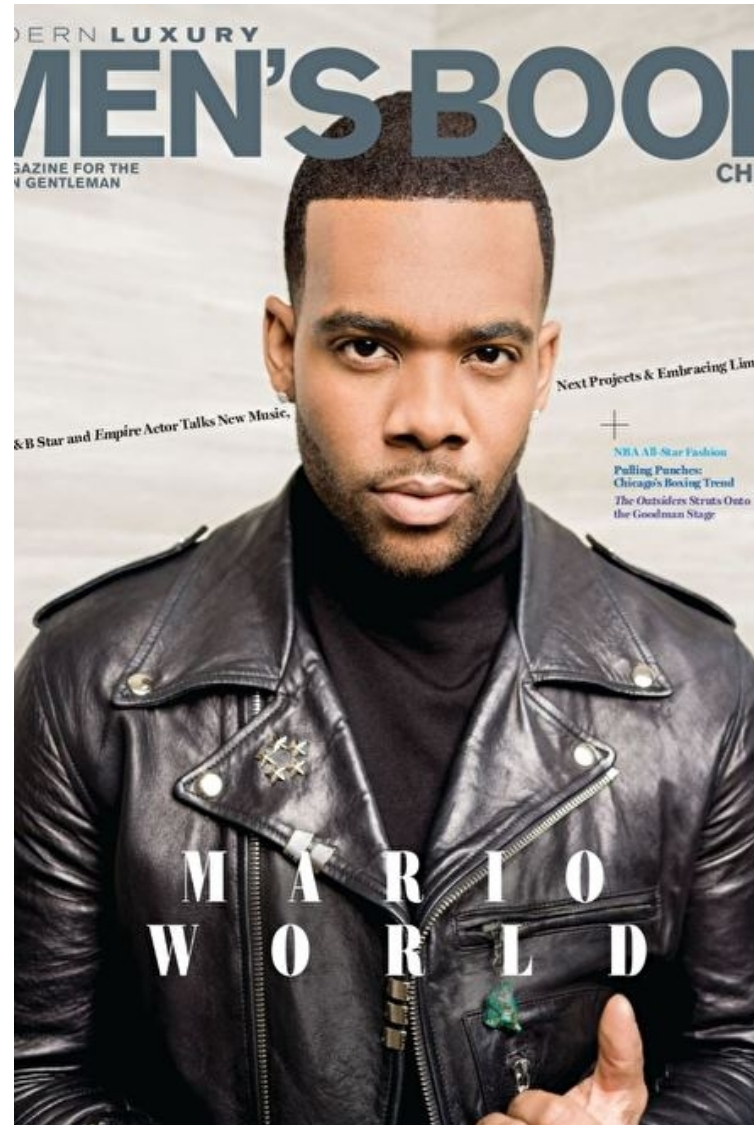
Inseam 30cm / 12"

Neck 38cm / 15"

Sleeve 84cm / 33"

Suit size 38cm / 28"

Suit cut Regular



Harold
in flow
JACOB
T-shirt
Elbert
white
by Am
book, I
Lauren
Vaccos
Socks &
Drap-G
gold w
S&L DE
all Jan
Fava J
green

Select

MODEL MANAGEMENT

1400 Alton Rd Suite 103, Miami Beach, 33139, Florida, United States

Phone: (305) 672-6342 Fax: (305) 672-1749 Email: info.miami@selectmodel.com Website: <https://www.selectmodel.com/>

MARIO

Height 180cm / 5' 11.0"

Waist 76cm / 30"

Shoes EU/US/UK 43.5 / 10.5 / 9

Eyes Brown

Hair Black

Inseam 30cm / 12"

Neck 38cm / 15"

Sleeve 84cm / 33"

Suit size 38cm / 28"

Suit cut Regular



Select

MODEL MANAGEMENT

1400 Alton Rd Suite 103, Miami Beach, 33139, Florida, United States
Phone: (305) 672-6342 Fax: (305) 672-1749 Email: info.miami@selectmodel.com Website: https://www.selectmodel.com/

MARIO

Height 180cm / 5' 11.0"

Waist 76cm / 30"

Shoes EU/US/UK 43.5 / 10.5 / 9

Eyes Brown

Hair Black

Inseam 30cm / 12"

Neck 38cm / 15"

Sleeve 84cm / 33"

Suit size 38cm / 28"

Suit cut Regular



niko straight leg
www.36052 by
58; jersey sport
Thom down, \$225.
Eton, plain silk and
oil check sport coat,
\$95, by Giorgio
arini, Chelsea
at, \$895, by Saint
arant, by Anthony
corallo, oil on
at Fifth Avenue
miles bracelet in
ding silver and
blue, \$299, by John
ny, Yacht Master
2K gold with
a diamond dial,
1150, by Rolex,
1st at James & Sons
a Jewellers. Other
rby, Mario's own.