

## Julia Ardon

Height 178cm / 5' 10.0"

Size EU/US 39

Bust 76cm / 30"

Waist 63cm / 25"

Hips 87cm / 34.5"

Shoes EU/US/UK 40 / 9 / 7

Eyes Brown

Hair Brown



## Julia Ardon

Height 178cm / 5' 10.0"

Size EU/US 39

Bust 76cm / 30"

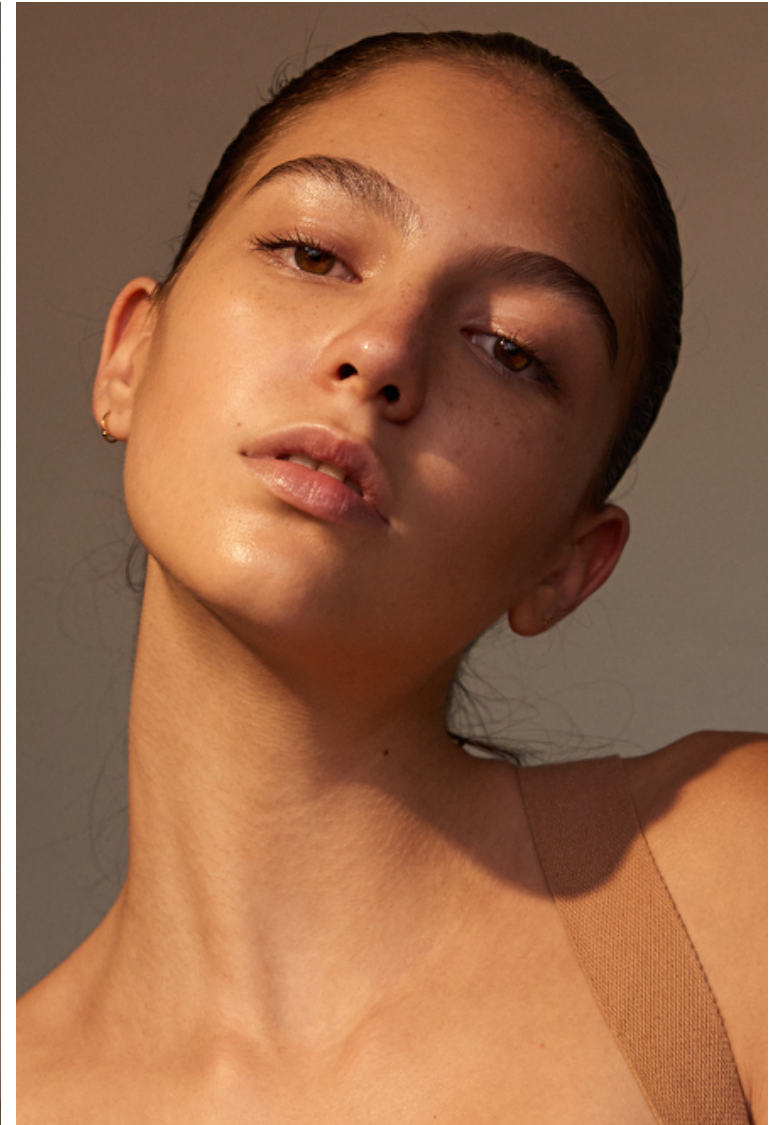
Waist 63cm / 25"

Hips 87cm / 34.5"

Shoes EU/US/UK 40 / 9 / 7

Eyes Brown

Hair Brown



# Select

MODEL MANAGEMENT

Via Giorgio Washington, 2, Milano, 20146, Lombardia, Italy

Phone: +39 02 89658300 Fax: +39 02 89658398 Email: [info.milano@selectmodel.com](mailto:info.milano@selectmodel.com) Website: <https://www.selectmodel.com/>

## Julia Ardon

Height 178cm / 5' 10.0"

Size EU/US 39

Bust 76cm / 30"

Waist 63cm / 25"

Hips 87cm / 34.5"

Shoes EU/US/UK 40 / 9 / 7

Eyes Brown

Hair Brown





# Select

MODEL MANAGEMENT

Via Giorgio Washington, 2, Milano, 20146, Lombardia, Italy

Phone: +39 02 89658300 Fax: +39 02 89658398 Email: info.milano@selectmodel.com Website: <https://www.selectmodel.com/>

## Julia Ardon

Height 178cm / 5' 10.0"

Size EU/US 39

Bust 76cm / 30"

Waist 63cm / 25"

Hips 87cm / 34.5"

Shoes EU/US/UK 40 / 9 / 7

Eyes Brown

Hair Brown



### DENIM 2000'S

Cazadora de piel marrón,  
Emporio Armani; conjunto de camisa  
con falda de popelín, Bottega Veneta,  
y vaquero, Rochas.



### COQUETTE VS FUERTE

Vestido de seda con  
lazos en rosa pastel,  
pololos de seda, botas  
de piel masculinas y gorra  
de plumas. Todo, Prada.

# Select

MODEL MANAGEMENT

Via Giorgio Washington, 2, Milano, 20146, Lombardia, Italy

Phone: +39 02 89658300 Fax: +39 02 89658398 Email: [info.milano@selectmodel.com](mailto:info.milano@selectmodel.com) Website: <https://www.selectmodel.com/>

## Julia Ardon

Height 178cm / 5' 10.0"

Size EU/US 39

Bust 76cm / 30"

Waist 63cm / 25"

Hips 87cm / 34.5"

Shoes EU/US/UK 40 / 9 / 7

Eyes Brown

Hair Brown

