

Danny Lim

Height 186cm / 6' 1.0"

Chest 94cm / 37"

Waist 80cm / 31.5"

Hips 94cm / 37"

Shoes EU/US/UK 43 / 10.5 / 9

Eyes Brown

Hair Black

Inseam 80cm / 31.5"

Suit size 48cm / 38"

Suit cut Regular



Danny Lim

Height 186cm / 6' 1.0"

Chest 94cm / 37"

Waist 80cm / 31.5"

Hips 94cm / 37"

Shoes EU/US/UK 43 / 10.5 / 9

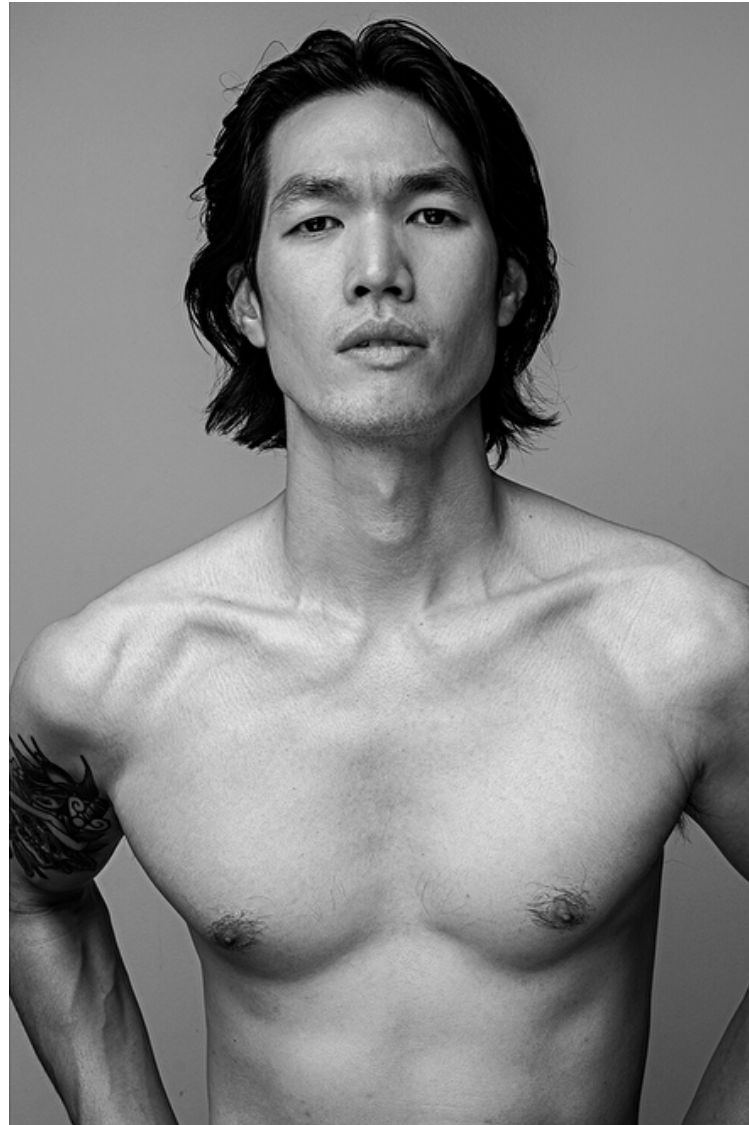
Eyes Brown

Hair Black

Inseam 80cm / 31.5"

Suit size 48cm / 38"

Suit cut Regular



Danny Lim

Height 186cm / 6' 1.0"

Chest 94cm / 37"

Waist 80cm / 31.5"

Hips 94cm / 37"

Shoes EU/US/UK 43 / 10.5 / 9

Eyes Brown

Hair Black

Inseam 80cm / 31.5"

Suit size 48cm / 38"

Suit cut Regular



Danny Lim

Height 186cm / 6' 1.0"

Chest 94cm / 37"

Waist 80cm / 31.5"

Hips 94cm / 37"

Shoes EU/US/UK 43 / 10.5 / 9

Eyes Brown

Hair Black

Inseam 80cm / 31.5"

Suit size 48cm / 38"

Suit cut Regular



Danny Lim

Height 186cm / 6' 1.0"

Chest 94cm / 37"

Waist 80cm / 31.5"

Hips 94cm / 37"

Shoes EU/US/UK 43 / 10.5 / 9

Eyes Brown

Hair Black

Inseam 80cm / 31.5"

Suit size 48cm / 38"

Suit cut Regular



Danny Lim

Height 186cm / 6' 1.0"

Chest 94cm / 37"

Waist 80cm / 31.5"

Hips 94cm / 37"

Shoes EU/US/UK 43 / 10.5 / 9

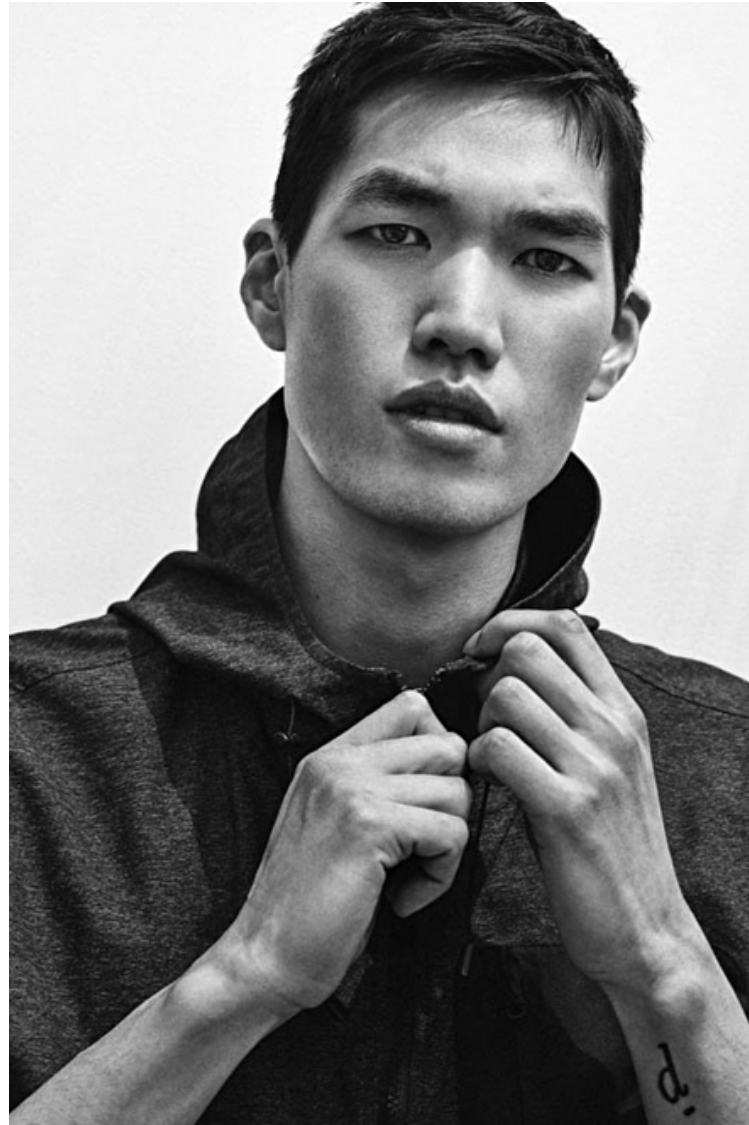
Eyes Brown

Hair Black

Inseam 80cm / 31.5"

Suit size 48cm / 38"

Suit cut Regular



Coat, tank top and
boots, all by
Barbary Prosum,
ankle boots by
Giorgio Armani.

Danny Lim

Height 186cm / 6' 1.0"

Chest 94cm / 37"

Waist 80cm / 31.5"

Hips 94cm / 37"

Shoes EU/US/UK 43 / 10.5 / 9

Eyes Brown

Hair Black

Inseam 80cm / 31.5"

Suit size 48cm / 38"

Suit cut Regular



Danny Lim

Height 186cm / 6' 1.0"

Chest 94cm / 37"

Waist 80cm / 31.5"

Hips 94cm / 37"

Shoes EU/US/UK 43 / 10.5 / 9

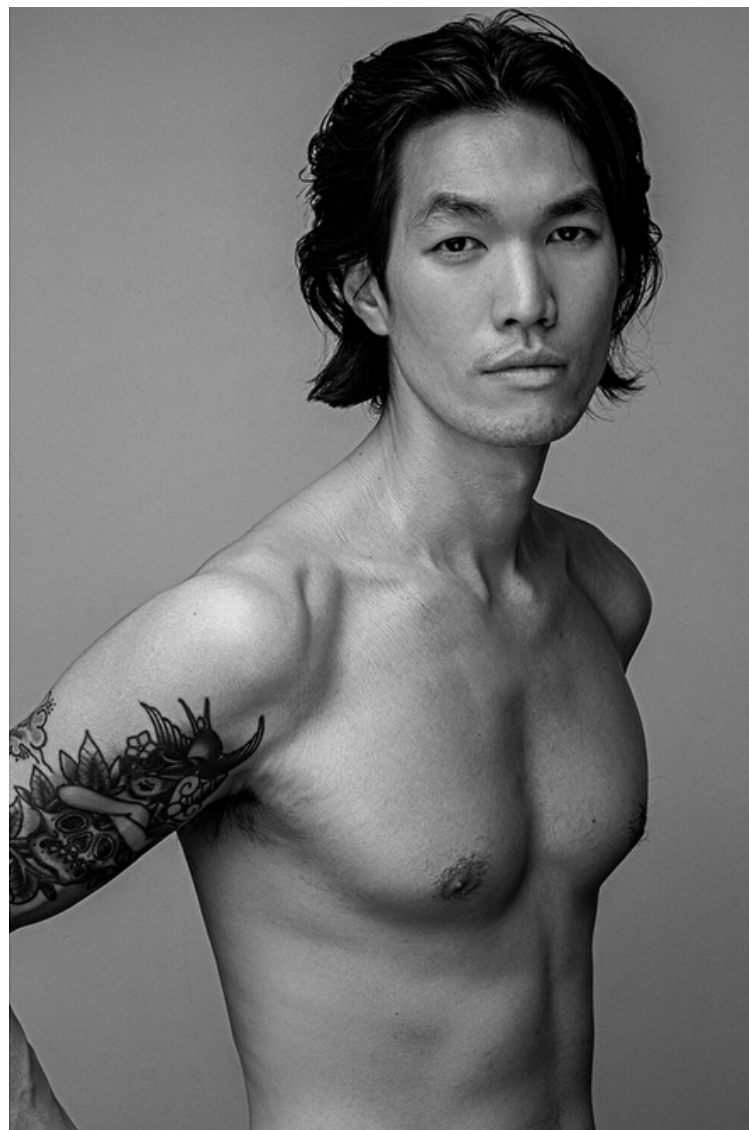
Eyes Brown

Hair Black

Inseam 80cm / 31.5"

Suit size 48cm / 38"

Suit cut Regular



Danny Lim

Height 186cm / 6' 1.0"

Chest 94cm / 37"

Waist 80cm / 31.5"

Hips 94cm / 37"

Shoes EU/US/UK 43 / 10.5 / 9

Eyes Brown

Hair Black

Inseam 80cm / 31.5"

Suit size 48cm / 38"

Suit cut Regular

