

# Select

MODEL MANAGEMENT

182 Rue de Rivoli, Paris, 75001, Île-de-France, France

**Phone:** +33 (0) 1 40 20 15 15 **Email:** info.paris@selectmodel.com **Website:** <https://selectmodel.com/>

ALISA AHMANN



# Select

MODEL MANAGEMENT

182 Rue de Rivoli, Paris, 75001, Île-de-France, France

**Phone:** +33 (0) 1 40 20 15 15 **Email:** info.paris@selectmodel.com **Website:** <https://selectmodel.com/>

ALISA AHMANN



# Select

MODEL MANAGEMENT

182 Rue de Rivoli, Paris, 75001, Île-de-France, France

Phone: +33 (0) 1 40 20 15 15 Email: info.paris@selectmodel.com Website: <https://selectmodel.com/>

ALISA AHMANN



# Select

MODEL MANAGEMENT

182 Rue de Rivoli, Paris, 75001, Île-de-France, France

Phone: +33 (0) 1 40 20 15 15 Email: info.paris@selectmodel.com Website: <https://selectmodel.com/>

ALISA AHMANN



Asimetrías y  
mangas farol o la  
suma de excesos  
le una temporada  
subida de tono.  
Vestido con escote  
trapezoidal asimétrico  
bordado de strass  
€5.000 € y botas  
NIKI 105 de terciopelo  
€305 €, todo de Saint  
Laurent por Anthony  
Luccarello.

# Select

MODEL MANAGEMENT

182 Rue de Rivoli, Paris, 75001, Île-de-France, France

Phone: +33 (0) 1 40 20 15 15 Email: info.paris@selectmodel.com Website: <https://selectmodel.com/>

## ALISA AHMANN

Las capas proliferan,  
pero Michael  
Kors encuentra la  
solución idónea  
para evocar su gesto  
sin renunciar a las  
mangas. Dos en uno.  
Capa de lana (3.435 €),  
blusa de seda negra  
(798 €), pantalón  
de franela (888 €) y  
 Cinturón de cuero  
(258 €), todo de Michael  
Kors Collection; y  
zapatos en piel pulida,  
de Church's (440 €).



# Select

MODEL MANAGEMENT

182 Rue de Rivoli, Paris, 75001, Île-de-France, France

Phone: +33 (0) 1 40 20 15 15 Email: info.paris@selectmodel.com Website: <https://selectmodel.com/>

## ALISA AHMANN



**BOTTEGA VENETA** Bermudas de piel y camiseta en cashmere, ambos BOTTEGA VENETA. Zapatos de cordón y diadema, PRADA. El colgante de corazón es de TOUS.

156 TELVA



# Select

MODEL MANAGEMENT

182 Rue de Rivoli, Paris, 75001, Île-de-France, France

Phone: +33 (0) 1 40 20 15 15 Email: info.paris@selectmodel.com Website: <https://selectmodel.com/>

ALISA AHMANN



# Select

MODEL MANAGEMENT

182 Rue de Rivoli, Paris, 75001, Île-de-France, France

Phone: +33 (0) 1 40 20 15 15 Email: info.paris@selectmodel.com Website: <https://selectmodel.com/>

ALISA AHMANN



Volantes con minifaldas, otra combinación no apta para almas sobrias que define la moda que se avecina.

Vestido de terciopelo y tafetán rojo, de Alexandre Vauthier 3.712,50 €; pendientes en oro blanco con diamantes, de Suárez (ver precio); y zapatos Doace du Desert, de Christian Louboutin (695 €).

Ayudante de realización: Marta Bajo. Maquillaje y peluquería: Mamiela Dime (Kastiel Artist Management) para M&C Cosmetics y Bumble and Bumble.





# Select

MODEL MANAGEMENT

182 Rue de Rivoli, Paris, 75001, Île-de-France, France

Phone: +33 (0) 1 40 20 15 15 Email: info.paris@selectmodel.com Website: <https://selectmodel.com/>

ALISA AHMANN



# Select

MODEL MANAGEMENT

182 Rue de Rivoli, Paris, 75001, Île-de-France, France

Phone: +33 (0) 1 40 20 15 15 Email: info.paris@selectmodel.com Website: <https://selectmodel.com/>

ALISA AHMANN



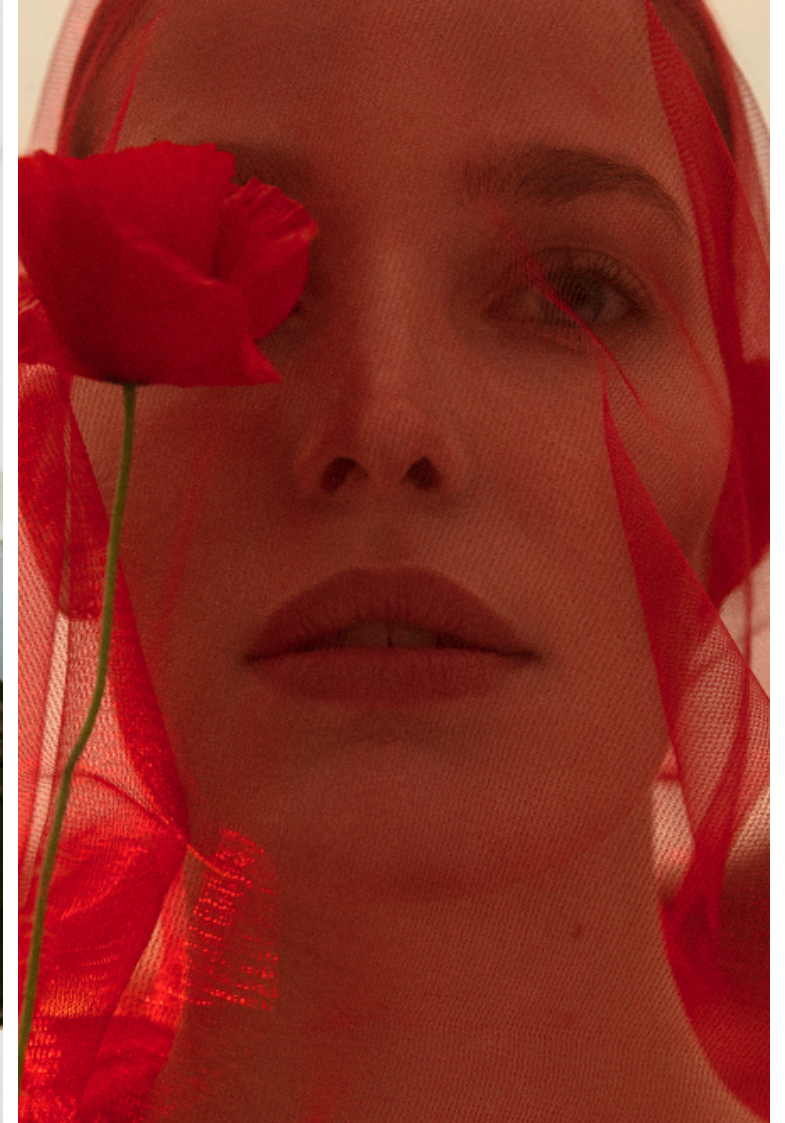
# Select

MODEL MANAGEMENT

182 Rue de Rivoli, Paris, 75001, Île-de-France, France

**Phone:** +33 (0) 1 40 20 15 15 **Email:** info.paris@selectmodel.com **Website:** <https://selectmodel.com/>

ALISA AHMANN



# Select

MODEL MANAGEMENT

182 Rue de Rivoli, Paris, 75001, Île-de-France, France

**Phone:** +33 (0) 1 40 20 15 15 **Email:** info.paris@selectmodel.com **Website:** <https://selectmodel.com/>

ALISA AHMANN



# Select

MODEL MANAGEMENT

182 Rue de Rivoli, Paris, 75001, Île-de-France, France

**Phone:** +33 (0) 1 40 20 15 15 **Email:** info.paris@selectmodel.com **Website:** <https://selectmodel.com/>

ALISA AHMANN



# Select

MODEL MANAGEMENT

182 Rue de Rivoli, Paris, 75001, Île-de-France, France

**Phone:** +33 (0) 1 40 20 15 15 **Email:** info.paris@selectmodel.com **Website:** <https://selectmodel.com/>

ALISA AHMANN

