

GABRIEL JAYNE

Height 185cm / 6' 1.0"

Chest 92cm / 36"

Waist 70cm / 27.5"

Hips 91cm / 36"

Shoes EU/US/UK 45 / 12 / 10.5

Eyes Hazel

Hair Brown

Suit size 46cm / 36"



Select

MODEL MANAGEMENT

182 Rue de Rivoli, Paris, 75001, Ile-de-France, France

Phone: +33 (0) 1 40 20 15 15 Email: info.paris@selectmodel.com Website: <https://selectmodel.com/>

GABRIEL JAYNE

Height 185cm / 6' 1.0"

Chest 92cm / 36"

Waist 70cm / 27.5"

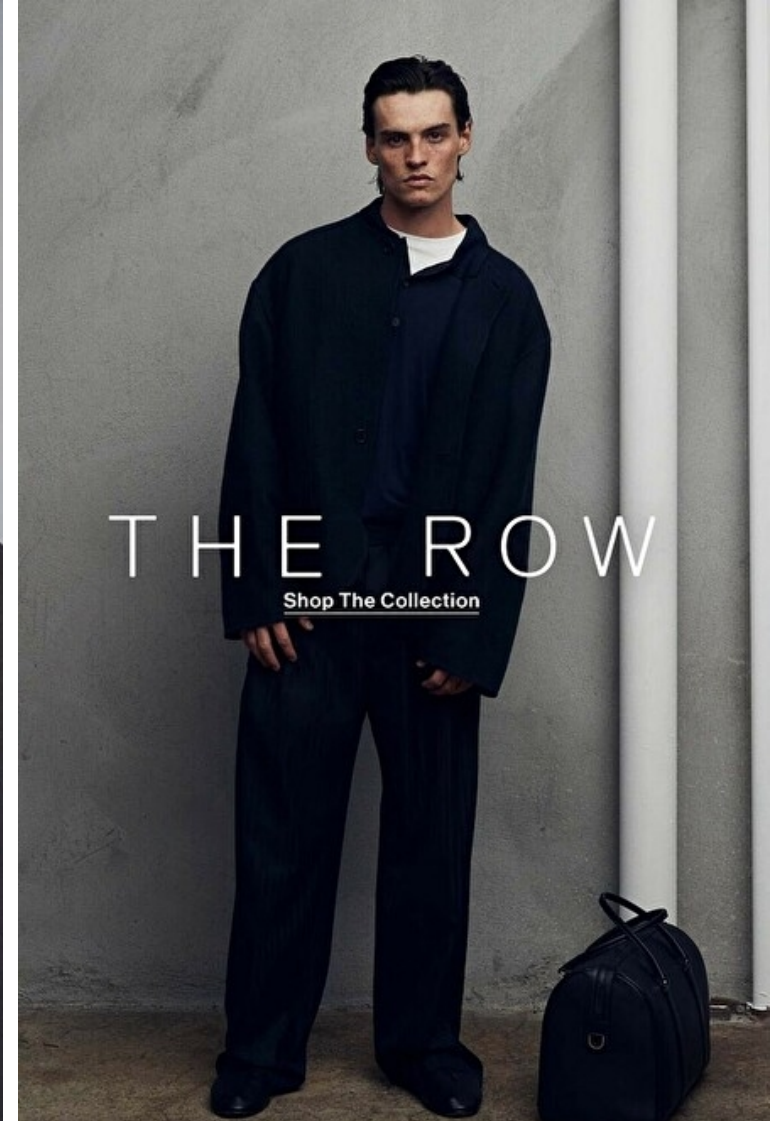
Hips 91cm / 36"

Shoes EU/US/UK 45 / 12 / 10.5

Eyes Hazel

Hair Brown

Suit size 46cm / 36"



Select

MODEL MANAGEMENT

182 Rue de Rivoli, Paris, 75001, Ile-de-France, France

Phone: +33 (0) 1 40 20 15 15 Email: info.paris@selectmodel.com Website: <https://selectmodel.com/>

GABRIEL JAYNE

Height 185cm / 6' 1.0"

Chest 92cm / 36"

Waist 70cm / 27.5"

Hips 91cm / 36"

Shoes EU/US/UK 45 / 12 / 10.5

Eyes Hazel

Hair Brown

Suit size 46cm / 36"



Select

MODEL MANAGEMENT

182 Rue de Rivoli, Paris, 75001, Ile-de-France, France

Phone: +33 (0) 1 40 20 15 15 Email: info.paris@selectmodel.com Website: <https://selectmodel.com/>

GABRIEL JAYNE

Height 185cm / 6' 1.0"

Chest 92cm / 36"

Waist 70cm / 27.5"

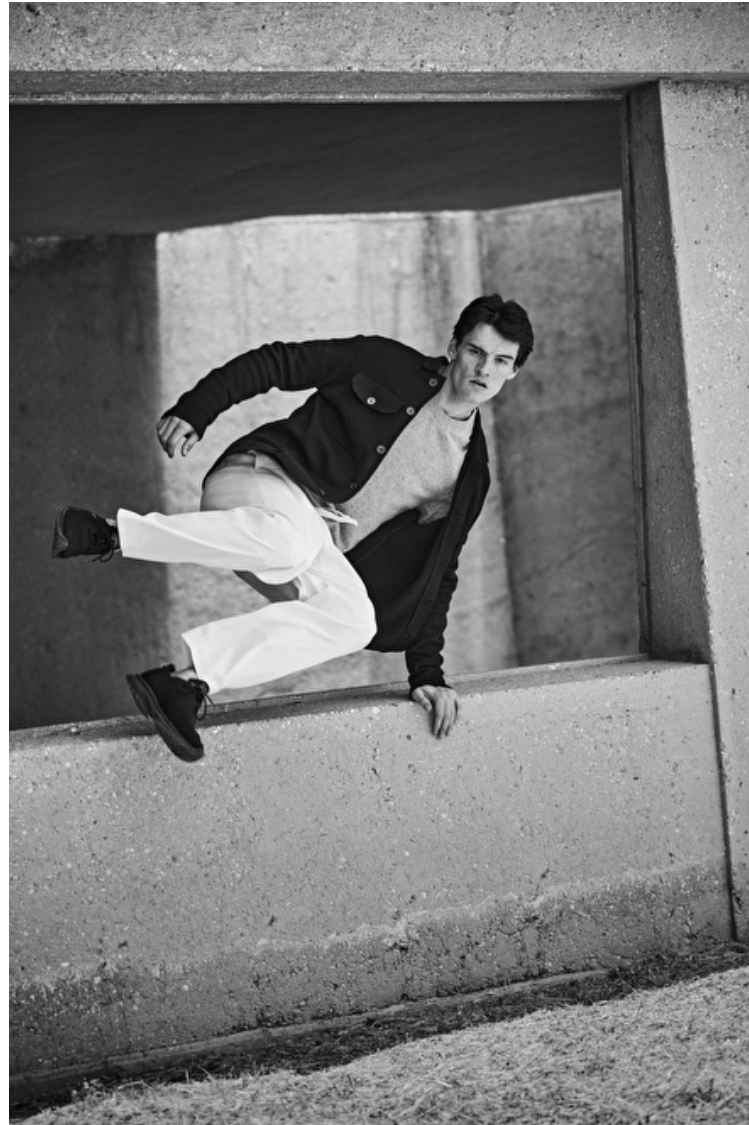
Hips 91cm / 36"

Shoes EU/US/UK 45 / 12 / 10.5

Eyes Hazel

Hair Brown

Suit size 46cm / 36"



Select

MODEL MANAGEMENT

182 Rue de Rivoli, Paris, 75001, Ile-de-France, France

Phone: +33 (0) 1 40 20 15 15 **Email:** info.paris@selectmodel.com **Website:** <https://selectmodel.com/>

GABRIEL JAYNE

Height 185cm / 6' 1.0"

Chest 92cm / 36"

Waist 70cm / 27.5"

Hips 91cm / 36"

Shoes EU/US/UK 45 / 12 / 10.5

Eyes Hazel

Hair Brown

Suit size 46cm / 36"



Select

MODEL MANAGEMENT

182 Rue de Rivoli, Paris, 75001, Ile-de-France, France

Phone: +33 (0) 1 40 20 15 15 Email: info.paris@selectmodel.com Website: <https://selectmodel.com/>

GABRIEL JAYNE

Height 185cm / 6' 1.0"

Chest 92cm / 36"

Waist 70cm / 27.5"

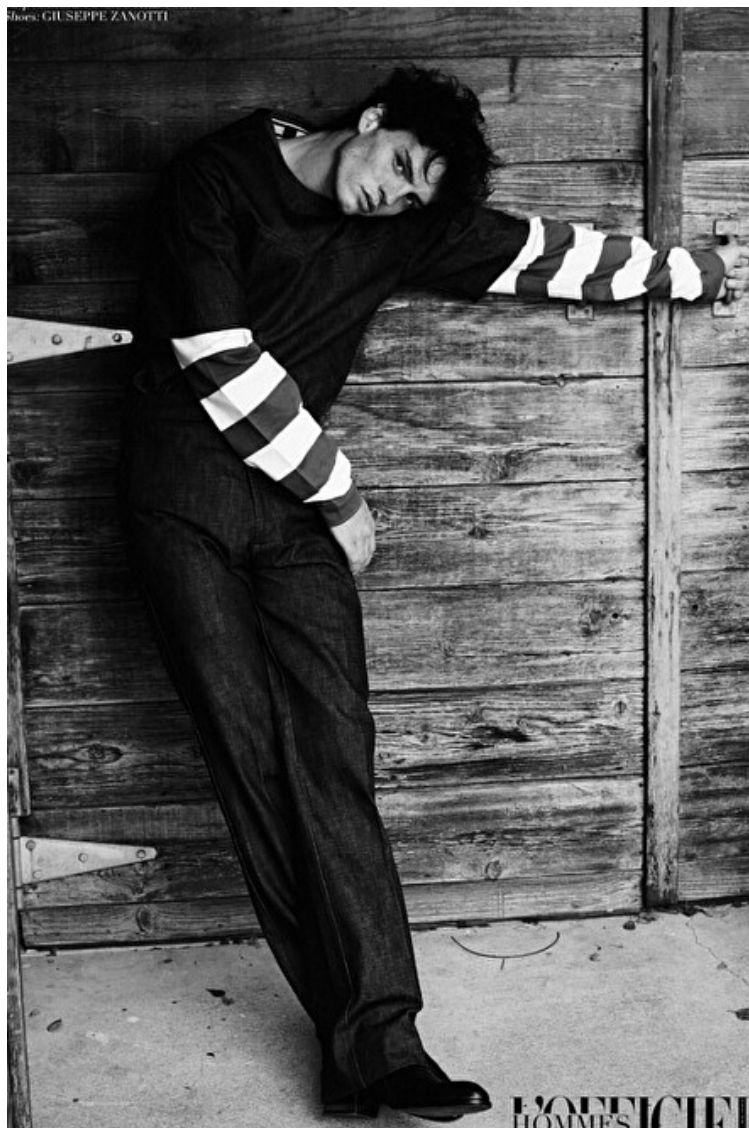
Hips 91cm / 36"

Shoes EU/US/UK 45 / 12 / 10.5

Eyes Hazel

Hair Brown

Suit size 46cm / 36"



Select

MODEL MANAGEMENT

182 Rue de Rivoli, Paris, 75001, Ile-de-France, France

Phone: +33 (0) 1 40 20 15 15 Email: info.paris@selectmodel.com Website: <https://selectmodel.com/>

GABRIEL JAYNE

Height 185cm / 6' 1.0"

Chest 92cm / 36"

Waist 70cm / 27.5"

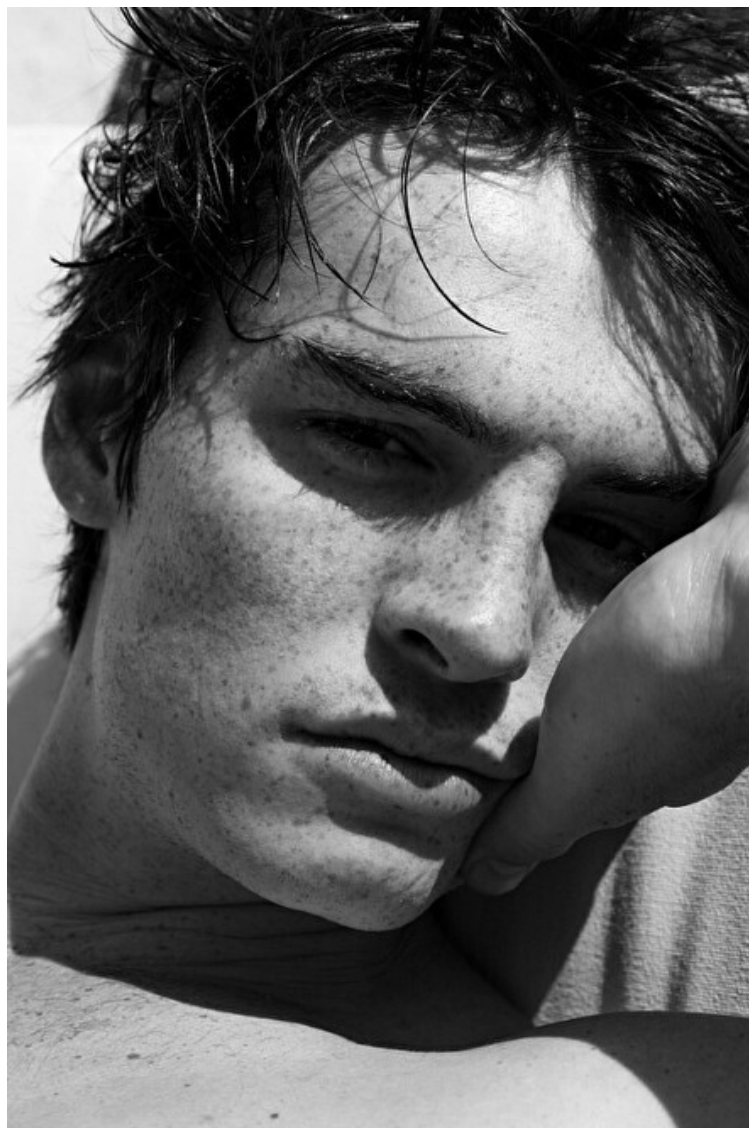
Hips 91cm / 36"

Shoes EU/US/UK 45 / 12 / 10.5

Eyes Hazel

Hair Brown

Suit size 46cm / 36"



GABRIEL JAYNE

Height 185cm / 6' 1.0"

Chest 92cm / 36"

Waist 70cm / 27.5"

Hips 91cm / 36"

Shoes EU/US/UK 45 / 12 / 10.5

Eyes Hazel

Hair Brown

Suit size 46cm / 36"



Select

MODEL MANAGEMENT

182 Rue de Rivoli, Paris, 75001, Ile-de-France, France

Phone: +33 (0) 1 40 20 15 15 Email: info.paris@selectmodel.com Website: <https://selectmodel.com/>

GABRIEL JAYNE

Height 185cm / 6' 1.0"

Chest 92cm / 36"

Waist 70cm / 27.5"

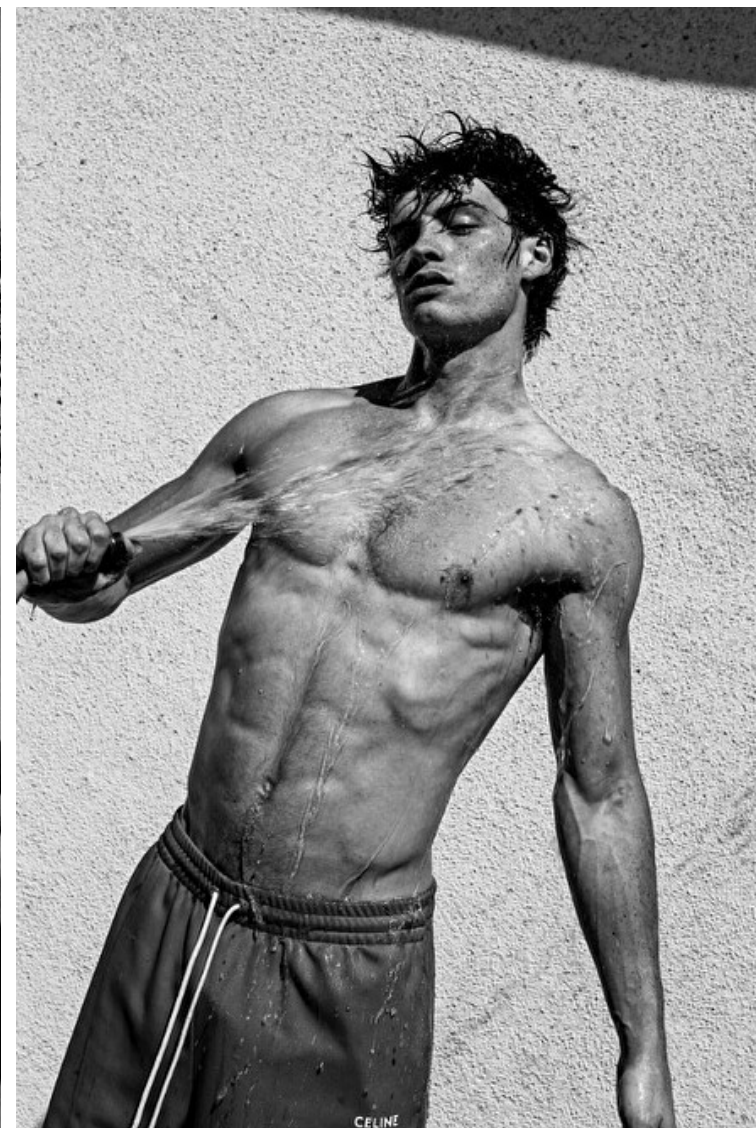
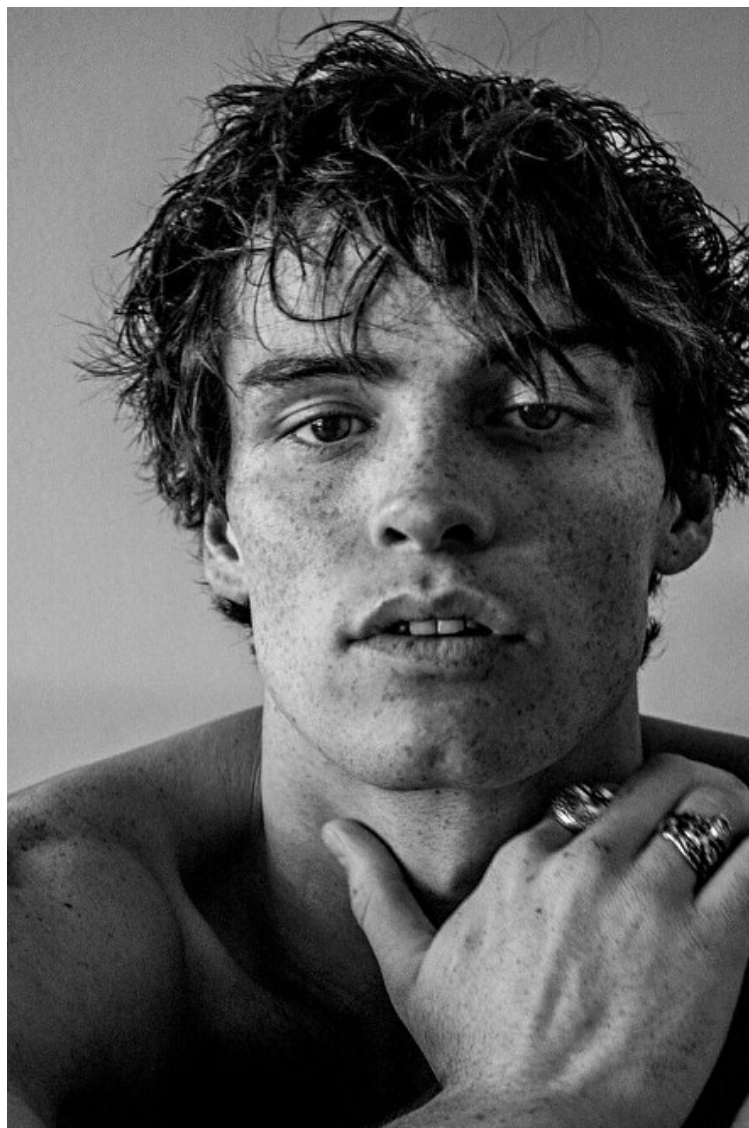
Hips 91cm / 36"

Shoes EU/US/UK 45 / 12 / 10.5

Eyes Hazel

Hair Brown

Suit size 46cm / 36"



Select

MODEL MANAGEMENT

182 Rue de Rivoli, Paris, 75001, Ile-de-France, France

Phone: +33 (0) 1 40 20 15 15 Email: info.paris@selectmodel.com Website: <https://selectmodel.com/>

GABRIEL JAYNE

Height 185cm / 6' 1.0"

Chest 92cm / 36"

Waist 70cm / 27.5"

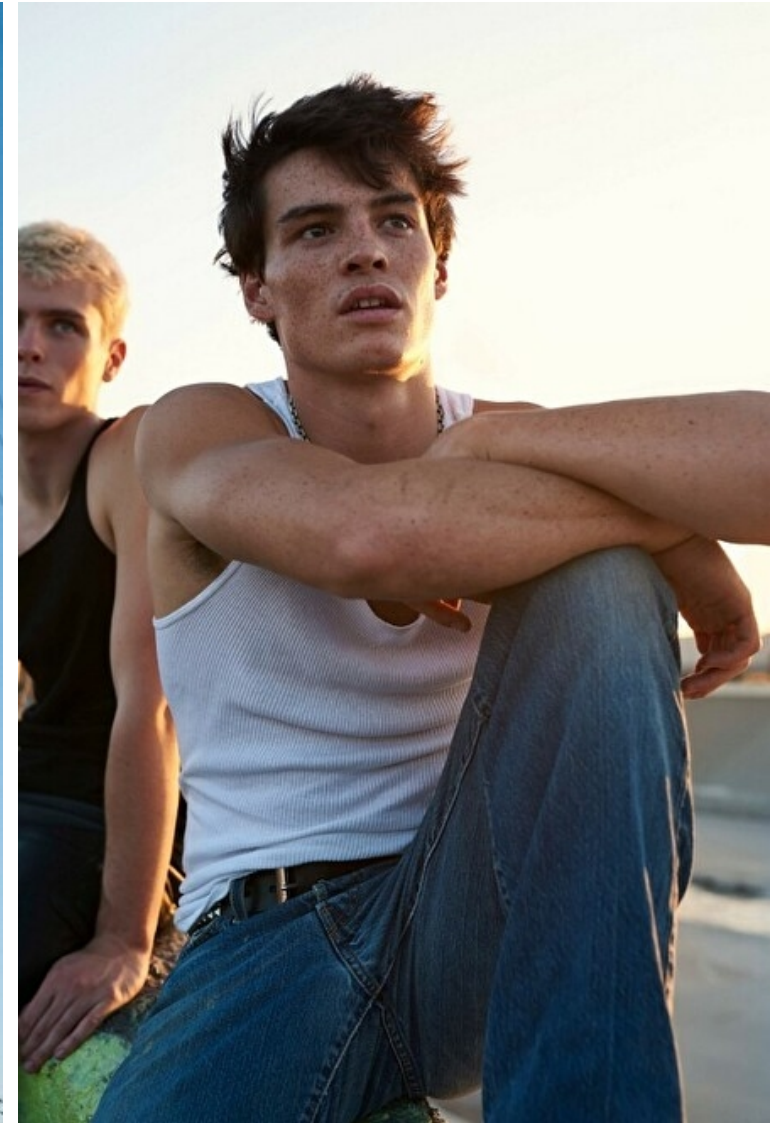
Hips 91cm / 36"

Shoes EU/US/UK 45 / 12 / 10.5

Eyes Hazel

Hair Brown

Suit size 46cm / 36"



Select

MODEL MANAGEMENT

182 Rue de Rivoli, Paris, 75001, Ile-de-France, France

Phone: +33 (0) 1 40 20 15 15 Email: info.paris@selectmodel.com Website: <https://selectmodel.com/>

GABRIEL JAYNE

Height 185cm / 6' 1.0"

Chest 92cm / 36"

Waist 70cm / 27.5"

Hips 91cm / 36"

Shoes EU/US/UK 45 / 12 / 10.5

Eyes Hazel

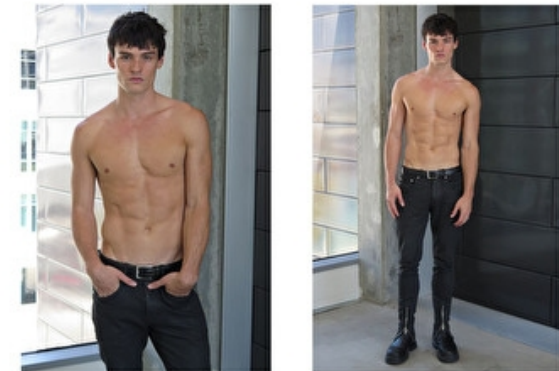
Hair Brown

Suit size 46cm / 36"



Select

MODEL MANAGEMENT



GABRIEL JAYNE

HEIGHT 185CM BUST 95CM WAIST 78CM HIPS 91CM EYES HAZEL HAIR BROWN

182 RUE DE RIVOLI, 75001, PARIS
TEL: + 33 (0) 1 40 20 15 15