

# Select

MODEL MANAGEMENT

182 Rue de Rivoli, Paris, 75001, Ile-de-France, France

Phone: +33 (0) 1 40 20 15 15 Email: info.paris@selectmodel.com Website: <https://selectmodel.com/>

## Gabrielle Braga

Height 180cm / 5' 11.0"

Bust 79cm / 31"

Waist 60cm / 23.5"

Hips 88cm / 34.5"

Shoes EU/US/UK 39 / 8 / 6

Eyes Blue

Hair Dark blond



# Select

MODEL MANAGEMENT

182 Rue de Rivoli, Paris, 75001, Ile-de-France, France

Phone: +33 (0) 1 40 20 15 15 Email: info.paris@selectmodel.com Website: <https://selectmodel.com/>

## Gabrielle Braga

Height 180cm / 5' 11.0"

Bust 79cm / 31"

Waist 60cm / 23.5"

Hips 88cm / 34.5"

Shoes EU/US/UK 39 / 8 / 6

Eyes Blue

Hair Dark blond



## Gabrielle Braga

Height 180cm / 5' 11.0"

Bust 79cm / 31"

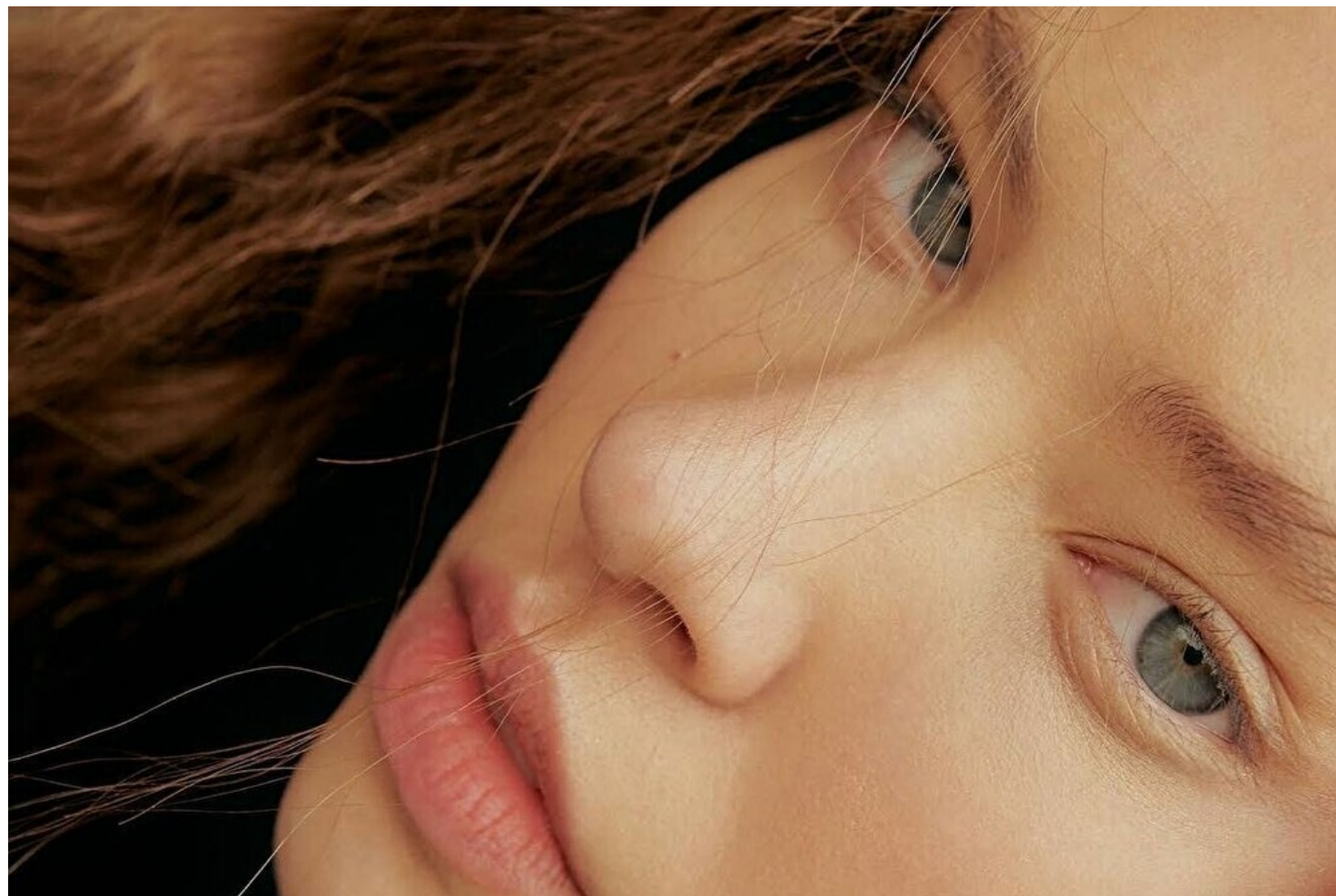
Waist 60cm / 23.5"

Hips 88cm / 34.5"

Shoes EU/US/UK 39 / 8 / 6

Eyes Blue

Hair Dark blond



## Gabrielle Braga

Height 180cm / 5' 11.0"

Bust 79cm / 31"

Waist 60cm / 23.5"

Hips 88cm / 34.5"

Shoes EU/US/UK 39 / 8 / 6

Eyes Blue

Hair Dark blond



# Select

MODEL MANAGEMENT

182 Rue de Rivoli, Paris, 75001, Ile-de-France, France

Phone: +33 (0) 1 40 20 15 15 Email: info.paris@selectmodel.com Website: <https://selectmodel.com/>

## Gabrielle Braga

Height 180cm / 5' 11.0"

Bust 79cm / 31"

Waist 60cm / 23.5"

Hips 88cm / 34.5"

Shoes EU/US/UK 39 / 8 / 6

Eyes Blue

Hair Dark blond



# Select

MODEL MANAGEMENT

182 Rue de Rivoli, Paris, 75001, Ile-de-France, France

Phone: +33 (0) 1 40 20 15 15 Email: info.paris@selectmodel.com Website: <https://selectmodel.com/>

## Gabrielle Braga

Height 180cm / 5' 11.0"

Bust 79cm / 31"

Waist 60cm / 23.5"

Hips 88cm / 34.5"

Shoes EU/US/UK 39 / 8 / 6

Eyes Blue

Hair Dark blond



## Gabrielle Braga

Height 180cm / 5' 11.0"

Bust 79cm / 31"

Waist 60cm / 23.5"

Hips 88cm / 34.5"

Shoes EU/US/UK 39 / 8 / 6

Eyes Blue

Hair Dark blond

