

## GEORGE TAYLOR

Height 189cm / 6' 2.5"

Chest 90cm / 35.5"

Waist 71cm / 28"

Hips 89cm / 35"

Shoes EU/US/UK 46 / 12.5 / 11

Eyes Brown

Hair Black

Suit size 46cm / 36"



# Select

MODEL MANAGEMENT

182 Rue de Rivoli, Paris, 75001, Île-de-France, France

Phone: +33 (0) 1 40 20 15 15 Email: info.paris@selectmodel.com Website: <https://selectmodel.com/>

## GEORGE TAYLOR

Height 189cm / 6' 2.5"

Chest 90cm / 35.5"

Waist 71cm / 28"

Hips 89cm / 35"

Shoes EU/US/UK 46 / 12.5 / 11

Eyes Brown

Hair Black

Suit size 46cm / 36"





## GEORGE TAYLOR

Height 189cm / 6' 2.5"

Chest 90cm / 35.5"

Waist 71cm / 28"

Hips 89cm / 35"

Shoes EU/US/UK 46 / 12.5 / 11

Eyes Brown

Hair Black

Suit size 46cm / 36"



# Select

MODEL MANAGEMENT

182 Rue de Rivoli, Paris, 75001, Île-de-France, France

Phone: +33 (0) 1 40 20 15 15 Email: info.paris@selectmodel.com Website: <https://selectmodel.com/>

## GEORGE TAYLOR

Height 189cm / 6' 2.5"

Chest 90cm / 35.5"

Waist 71cm / 28"

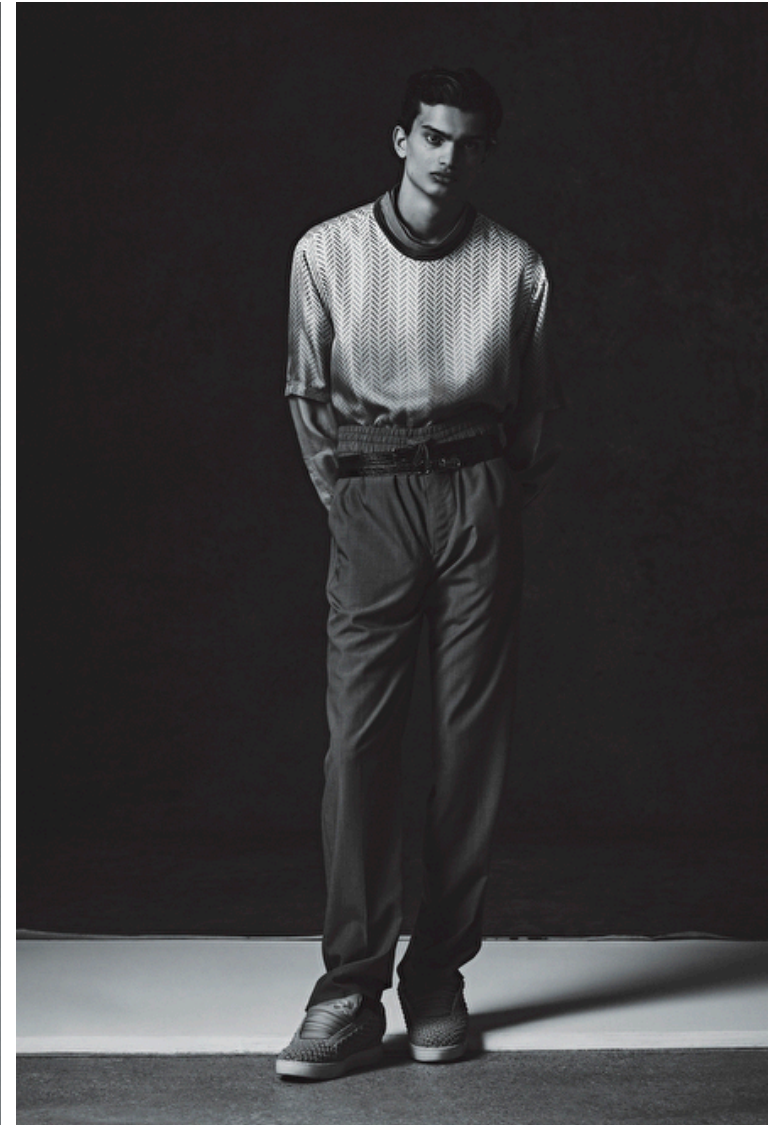
Hips 89cm / 35"

Shoes EU/US/UK 46 / 12.5 / 11

Eyes Brown

Hair Black

Suit size 46cm / 36"





## GEORGE TAYLOR

Height 189cm / 6' 2.5"

Chest 90cm / 35.5"

Waist 71cm / 28"

Hips 89cm / 35"

Shoes EU/US/UK 46 / 12.5 / 11

Eyes Brown

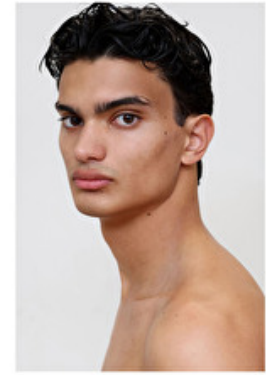
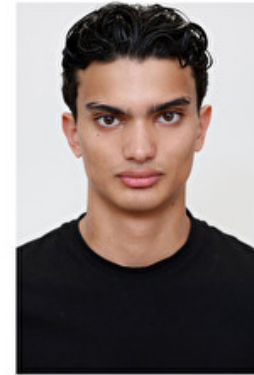
Hair Black

Suit size 46cm / 36"



# Select

MODEL MANAGEMENT



## GEORGE TAYLOR

HEIGHT 189CM BUST 90CM WAIST 71CM HIPS 89CM EYES BROWN HAIR BLACK

182 RUE DE RIVOLI, 75001, PARIS  
TEL: + 33 (0) 1 40 20 15 15