

JIHAN JEONG

Height 188cm / 6' 2.0"

Chest 82cm / 32.5"

Waist 62cm / 24.5"

Hips 89cm / 35"

Shoes EU/US/UK 44 / 11 / 9.5

Eyes Black

Hair Black

Suit size 46cm / 36"



Select

MODEL MANAGEMENT

182 Rue de Rivoli, Paris, 75001, Île-de-France, France

Phone: +33 (0) 1 40 20 15 15 Email: info.paris@selectmodel.com Website: <https://selectmodel.com/>

JIHAN JEONG

Select

MODEL MANAGEMENT

Height 188cm / 6' 2.0"

Chest 82cm / 32.5"

Waist 62cm / 24.5"

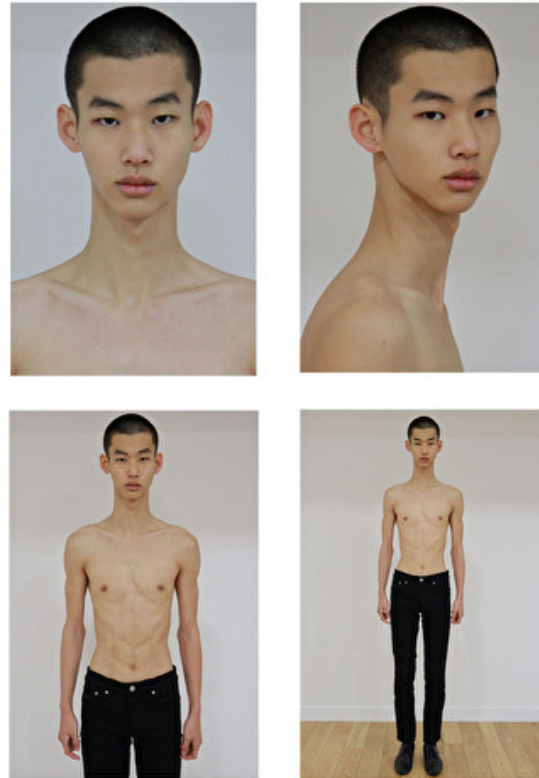
Hips 89cm / 35"

Shoes EU/US/UK 44 / 11 / 9.5

Eyes Black

Hair Black

Suit size 46cm / 36"



JIHAN JEONG

HEIGHT 188CM BUST 82CM WAIST 62CM HIPS 82CM EYES BLACK HAIR BLACK

182 RUE DE RIVOLI, 75001, PARIS
TEL: + 33 (0) 1 40 20 15 15