

## LI HAOYU

Height 189cm / 6' 2.5"

Chest 85cm / 33.5"

Waist 64cm / 25"

Hips 89cm / 35"

Shoes EU/US/UK 44 / 11 / 9.5

Eyes Black

Hair Black

Suit size 46cm / 36"



# Select

MODEL MANAGEMENT

182 Rue de Rivoli, Paris, 75001, Île-de-France, France

Phone: +33 (0) 1 40 20 15 15 Email: info.paris@selectmodel.com Website: <https://selectmodel.com/>

## LI HAOYU

Height 189cm / 6' 2.5"

Chest 85cm / 33.5"

Waist 64cm / 25"

Hips 89cm / 35"

Shoes EU/US/UK 44 / 11 / 9.5

Eyes Black

Hair Black

Suit size 46cm / 36"



# Select

MODEL MANAGEMENT

182 Rue de Rivoli, Paris, 75001, Île-de-France, France

Phone: +33 (0) 1 40 20 15 15 Email: info.paris@selectmodel.com Website: <https://selectmodel.com/>

## LI HAOYU

Height 189cm / 6' 2.5"

Chest 85cm / 33.5"

Waist 64cm / 25"

Hips 89cm / 35"

Shoes EU/US/UK 44 / 11 / 9.5

Eyes Black

Hair Black

Suit size 46cm / 36"



# Select

MODEL MANAGEMENT

182 Rue de Rivoli, Paris, 75001, Île-de-France, France

Phone: +33 (0) 1 40 20 15 15 Email: info.paris@selectmodel.com Website: <https://selectmodel.com/>

## LI HAOYU

Height 189cm / 6' 2.5"

Chest 85cm / 33.5"

Waist 64cm / 25"

Hips 89cm / 35"

Shoes EU/US/UK 44 / 11 / 9.5

Eyes Black

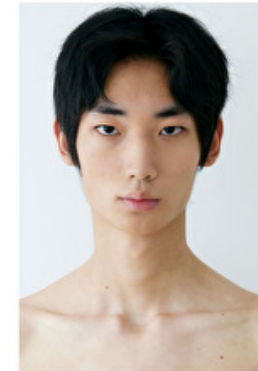
Hair Black

Suit size 46cm / 36"



## Select

MODEL MANAGEMENT



## LI HAOYU

HEIGHT 190CM BUST 83CM WAIST 64CM HIPS 91CM EYES BLACK HAIR BLACK

182 RUE DE RIVOLI, 75001, PARIS  
TEL: + 33 (0) 1 40 20 15 15