

LIMAMU MBAYE

Height 189cm / 6' 2.5"

Chest 91cm / 36"

Waist 69cm / 27"

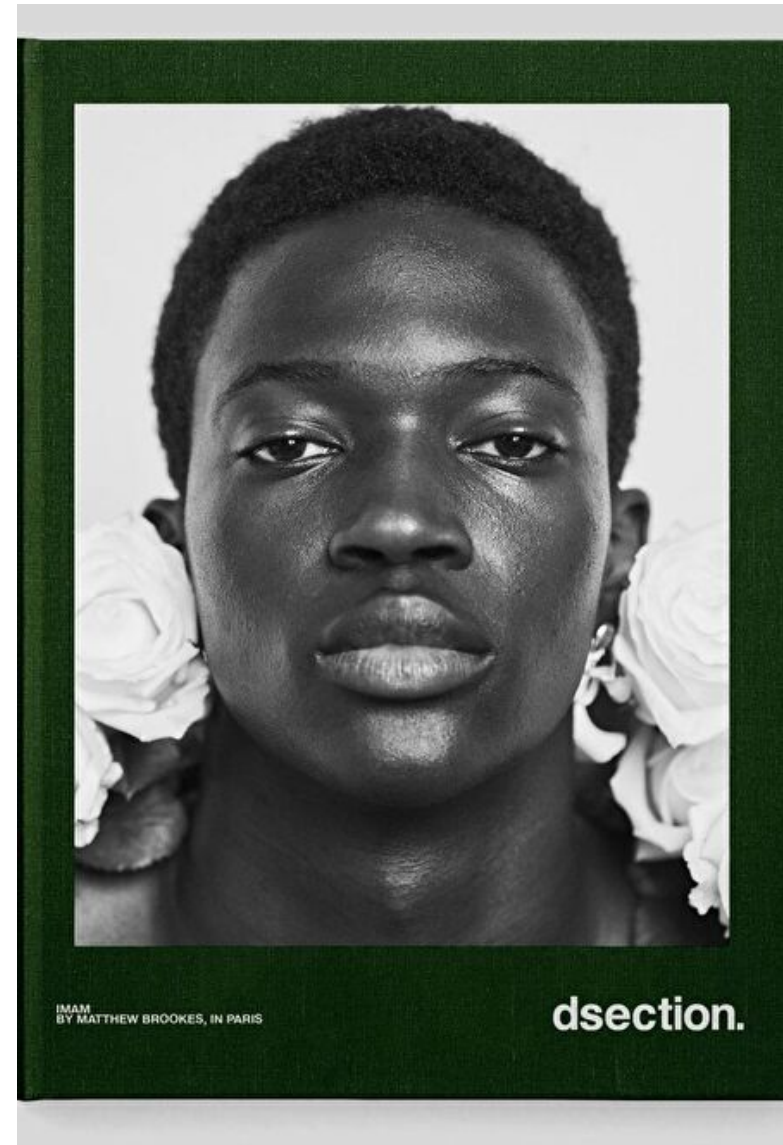
Hips 90cm / 35.5"

Shoes EU/US/UK 44 / 11 / 9.5

Eyes Black

Hair Black

Suit size 48cm / 38"



Select

MODEL MANAGEMENT

182 Rue de Rivoli, Paris, 75001, Ile-de-France, France

Phone: +33 (0) 1 40 20 15 15 Email: info.paris@selectmodel.com Website: <https://selectmodel.com/>

LIMAMU MBAYE

Height 189cm / 6' 2.5"

Chest 91cm / 36"

Waist 69cm / 27"

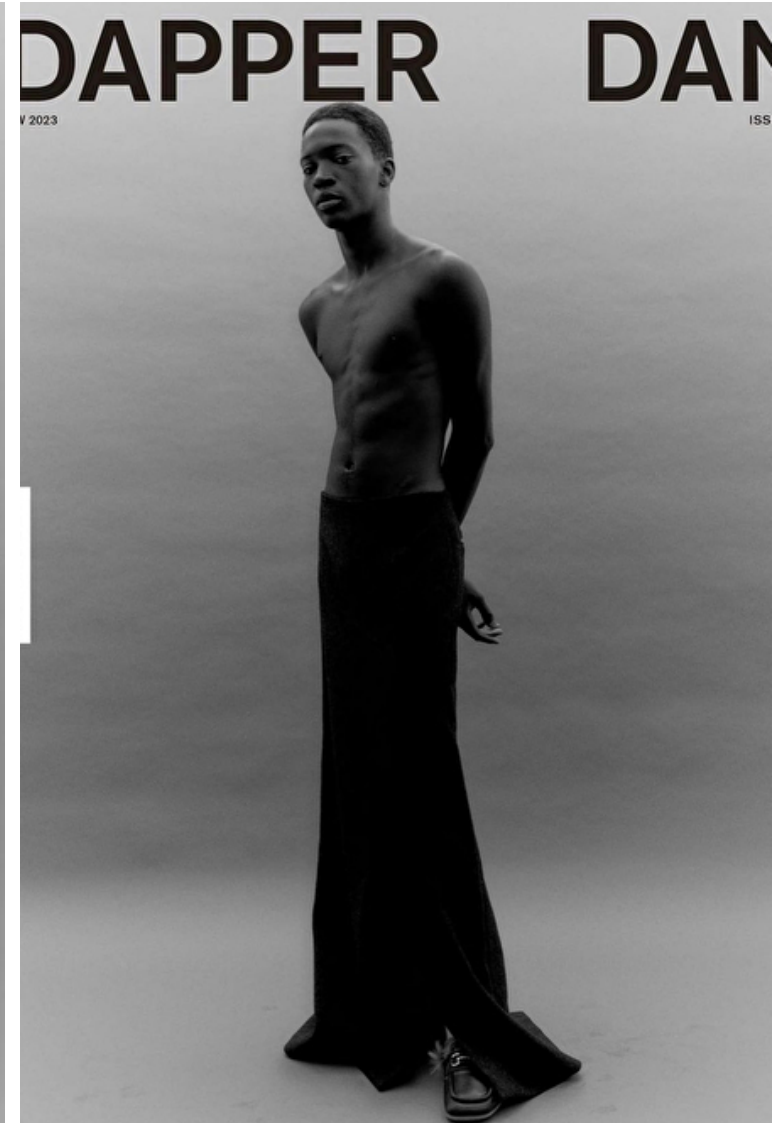
Hips 90cm / 35.5"

Shoes EU/US/UK 44 / 11 / 9.5

Eyes Black

Hair Black

Suit size 48cm / 38"



Select

MODEL MANAGEMENT

182 Rue de Rivoli, Paris, 75001, Ile-de-France, France

Phone: +33 (0) 1 40 20 15 15 Email: info.paris@selectmodel.com Website: <https://selectmodel.com/>

LIMAMU MBAYE

Height 189cm / 6' 2.5"

Chest 91cm / 36"

Waist 69cm / 27"

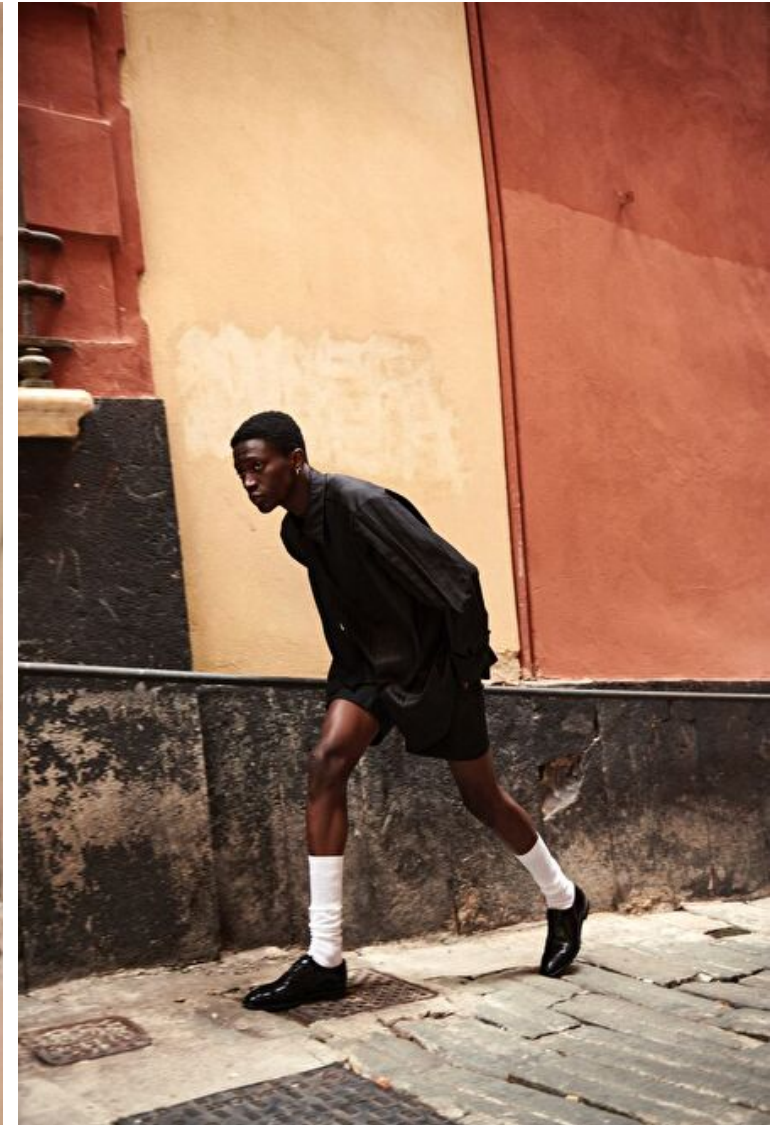
Hips 90cm / 35.5"

Shoes EU/US/UK 44 / 11 / 9.5

Eyes Black

Hair Black

Suit size 48cm / 38"



LIMAMU MBAYE

Height 189cm / 6' 2.5"

Chest 91cm / 36"

Waist 69cm / 27"

Hips 90cm / 35.5"

Shoes EU/US/UK 44 / 11 / 9.5

Eyes Black

Hair Black

Suit size 48cm / 38"



LIMAMU MBAYE

Height 189cm / 6' 2.5"

Chest 91cm / 36"

Waist 69cm / 27"

Hips 90cm / 35.5"

Shoes EU/US/UK 44 / 11 / 9.5

Eyes Black

Hair Black

Suit size 48cm / 38"



Select

MODEL MANAGEMENT

182 Rue de Rivoli, Paris, 75001, Ile-de-France, France

Phone: +33 (0) 1 40 20 15 15 Email: info.paris@selectmodel.com Website: <https://selectmodel.com/>

LIMAMU MBAYE

Height 189cm / 6' 2.5"

Chest 91cm / 36"

Waist 69cm / 27"

Hips 90cm / 35.5"

Shoes EU/US/UK 44 / 11 / 9.5

Eyes Black

Hair Black

Suit size 48cm / 38"



Select

MODEL MANAGEMENT

182 Rue de Rivoli, Paris, 75001, Ile-de-France, France

Phone: +33 (0) 1 40 20 15 15 Email: info.paris@selectmodel.com Website: <https://selectmodel.com/>

LIMAMU MBAYE

Height 189cm / 6' 2.5"

Chest 91cm / 36"

Waist 69cm / 27"

Hips 90cm / 35.5"

Shoes EU/US/UK 44 / 11 / 9.5

Eyes Black

Hair Black

Suit size 48cm / 38"



Select

MODEL MANAGEMENT

182 Rue de Rivoli, Paris, 75001, Ile-de-France, France

Phone: +33 (0) 1 40 20 15 15 Email: info.paris@selectmodel.com Website: <https://selectmodel.com/>

LIMAMU MBAYE

Height 189cm / 6' 2.5"

Chest 91cm / 36"

Waist 69cm / 27"

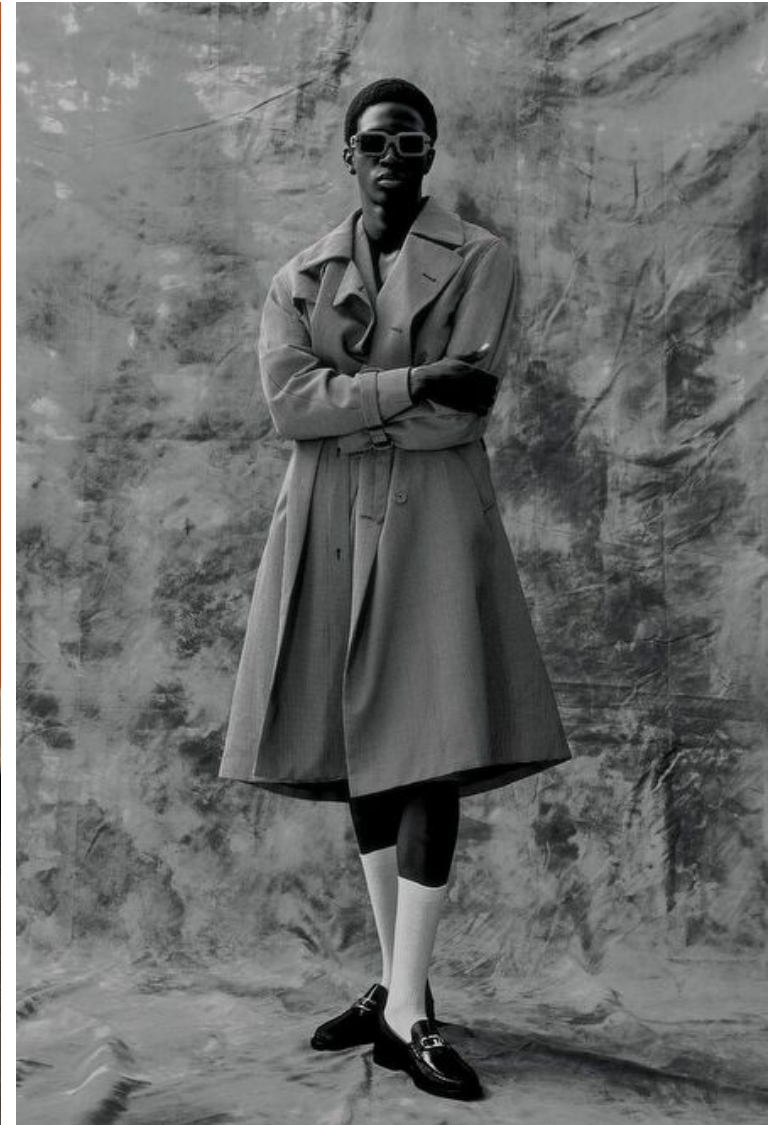
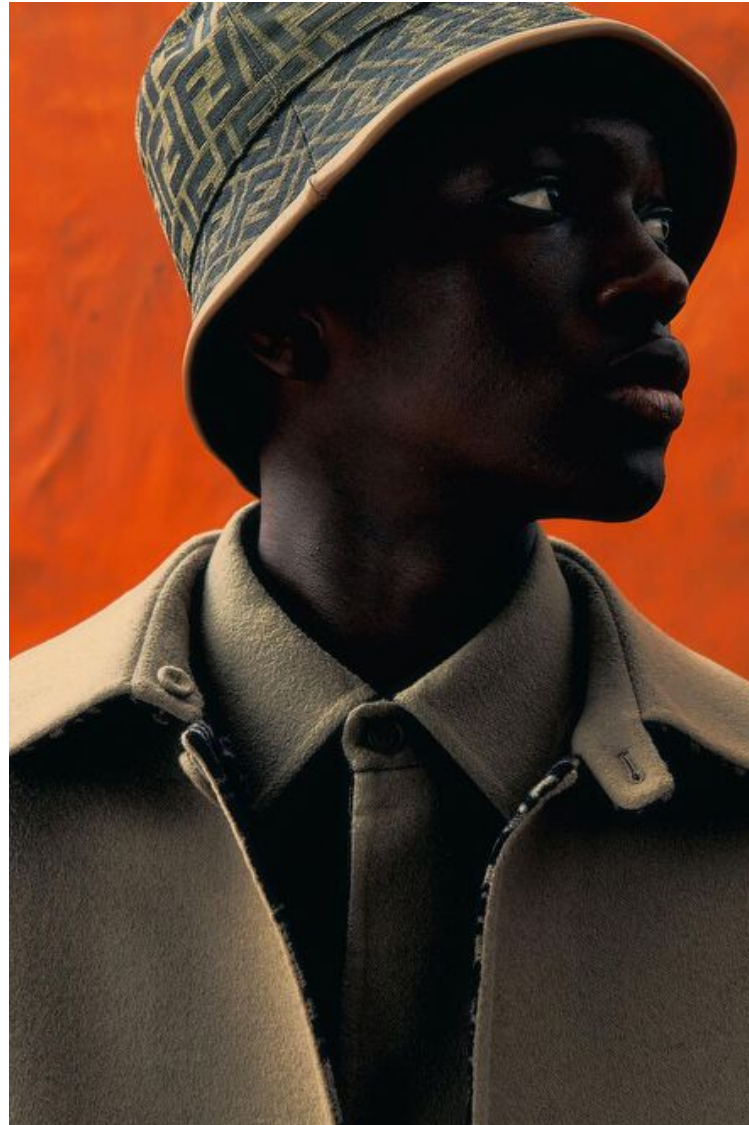
Hips 90cm / 35.5"

Shoes EU/US/UK 44 / 11 / 9.5

Eyes Black

Hair Black

Suit size 48cm / 38"



Select

MODEL MANAGEMENT

182 Rue de Rivoli, Paris, 75001, Ile-de-France, France

Phone: +33 (0) 1 40 20 15 15 Email: info.paris@selectmodel.com Website: <https://selectmodel.com/>

LIMAMU MBAYE

Height 189cm / 6' 2.5"

Chest 91cm / 36"

Waist 69cm / 27"

Hips 90cm / 35.5"

Shoes EU/US/UK 44 / 11 / 9.5

Eyes Black

Hair Black

Suit size 48cm / 38"



LIMAMU MBAYE

Height 189cm / 6' 2.5"

Chest 91cm / 36"

Waist 69cm / 27"

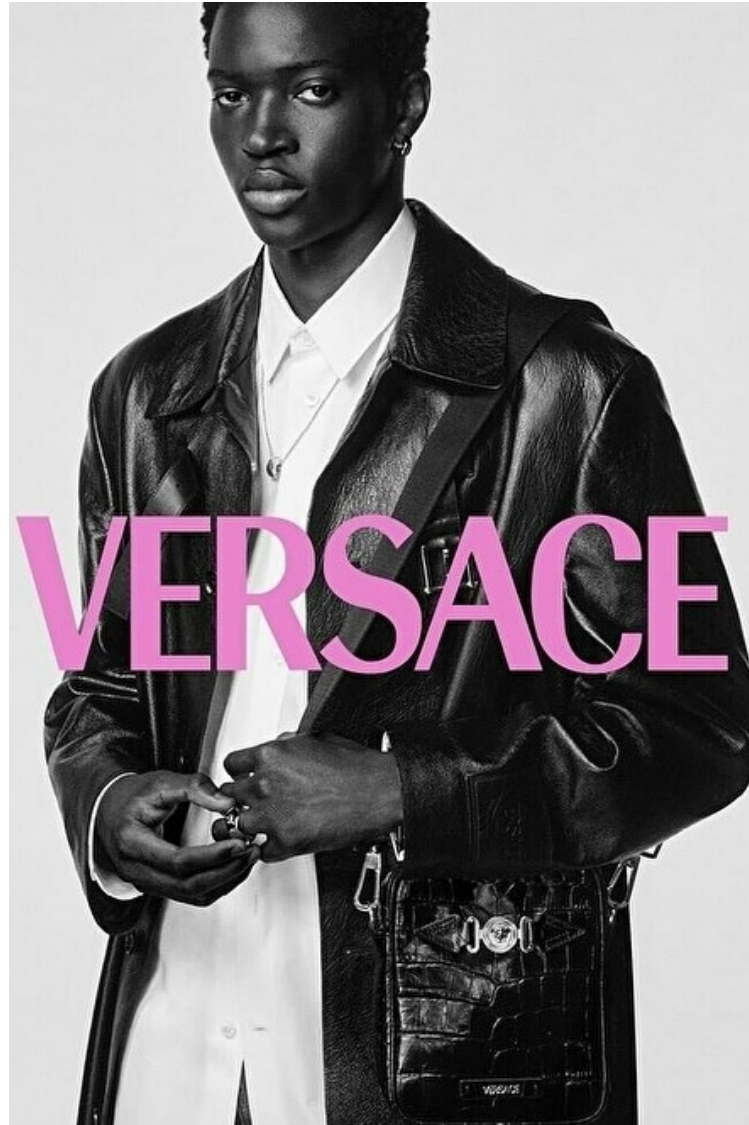
Hips 90cm / 35.5"

Shoes EU/US/UK 44 / 11 / 9.5

Eyes Black

Hair Black

Suit size 48cm / 38"



Select

MODEL MANAGEMENT

182 Rue de Rivoli, Paris, 75001, Ile-de-France, France

Phone: +33 (0) 1 40 20 15 15 Email: info.paris@selectmodel.com Website: <https://selectmodel.com/>

LIMAMU MBAYE

Select

MODEL MANAGEMENT

Height 189cm / 6' 2.5"

Chest 91cm / 36"

Waist 69cm / 27"

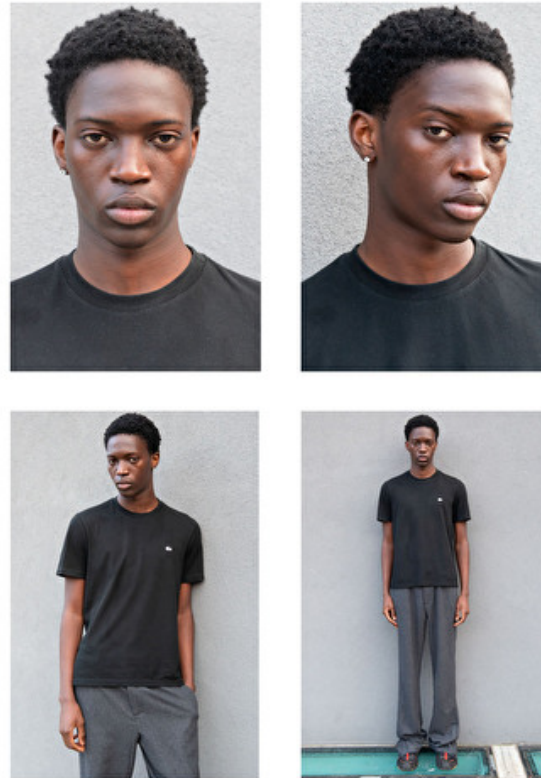
Hips 90cm / 35.5"

Shoes EU/US/UK 44 / 11 / 9.5

Eyes Black

Hair Black

Suit size 48cm / 38"



LIMAMU MBAYE

HEIGHT 189CM BUST 91CM WAIST 69CM HIPS 90CM EYES BLACK HAIR BLACK

182 RUE DE RIVOLI, 75001, PARIS
TEL: + 33 (0) 1 40 20 15 15