

## MATTY CARRINGTON

Height 186cm / 6' 1.0"

Chest 101cm / 40"

Waist 74cm / 29"

Hips 95cm / 37.5"

Shoes EU/US/UK 44 / 11 / 9.5

Eyes Blue green

Hair Light brown

Neck 41cm / 16"

Suit size 50cm / 40"



# Select

MODEL MANAGEMENT

182 Rue de Rivoli, Paris, 75001, Ile-de-France, France

Phone: +33 (0) 1 40 20 15 15 Email: info.paris@selectmodel.com Website: <https://selectmodel.com/>

## MATTY CARRINGTON

Height 186cm / 6' 1.0"

Chest 101cm / 40"

Waist 74cm / 29"

Hips 95cm / 37.5"

Shoes EU/US/UK 44 / 11 / 9.5

Eyes Blue green

Hair Light brown

Neck 41cm / 16"

Suit size 50cm / 40"



# Select

MODEL MANAGEMENT

182 Rue de Rivoli, Paris, 75001, Ile-de-France, France

Phone: +33 (0) 1 40 20 15 15 Email: info.paris@selectmodel.com Website: <https://selectmodel.com/>

## MATTY CARRINGTON

Height 186cm / 6' 1.0"

Chest 101cm / 40"

Waist 74cm / 29"

Hips 95cm / 37.5"

Shoes EU/US/UK 44 / 11 / 9.5

Eyes Blue green

Hair Light brown

Neck 41cm / 16"

Suit size 50cm / 40"





# Select

MODEL MANAGEMENT

182 Rue de Rivoli, Paris, 75001, Ile-de-France, France

Phone: +33 (0) 1 40 20 15 15 Email: info.paris@selectmodel.com Website: https://selectmodel.com/

## MATTY CARRINGTON

Height 186cm / 6' 1.0"

Chest 101cm / 40"

Waist 74cm / 29"

Hips 95cm / 37.5"

Shoes EU/US/UK 44 / 11 / 9.5

Eyes Blue green

Hair Light brown

Neck 41cm / 16"

Suit size 50cm / 40"



GG MODA

SONBAHAR 2016



# Select

MODEL MANAGEMENT

182 Rue de Rivoli, Paris, 75001, Ile-de-France, France

Phone: +33 (0) 1 40 20 15 15 Email: info.paris@selectmodel.com Website: <https://selectmodel.com/>

## MATTY CARRINGTON

Height 186cm / 6' 1.0"

Chest 101cm / 40"

Waist 74cm / 29"

Hips 95cm / 37.5"

Shoes EU/US/UK 44 / 11 / 9.5

Eyes Blue green

Hair Light brown

Neck 41cm / 16"

Suit size 50cm / 40"



Black gabardine nylon jumps  
by Prada. Ring jewelry crafted  
by Helmut Lang. Seen by St  
Oliver. Vintage art deco aqua  
and diamond bracelet available  
at Gallery. "Cuscato" ring in 18k  
gold and blue topaz by Thom

Model Matty Carrington at Se  
Set design Peter Klein. Set  
design assistance Sean Foli  
Styling assistance Steven La  
Fuerne. Local production Mas  
Facchini. Production assistant  
Slatan Chastopov. Thanks to  
The Grosvenor Park Hotel.



# Select

MODEL MANAGEMENT

182 Rue de Rivoli, Paris, 75001, Ile-de-France, France

Phone: +33 (0) 1 40 20 15 15 Email: info.paris@selectmodel.com Website: <https://selectmodel.com/>

## MATTY CARRINGTON

Height 186cm / 6' 1.0"

Chest 101cm / 40"

Waist 74cm / 29"

Hips 95cm / 37.5"

Shoes EU/US/UK 44 / 11 / 9.5

Eyes Blue green

Hair Light brown

Neck 41cm / 16"

Suit size 50cm / 40"



Shirts: SCOTCH&SODA  
Pantaloons: EL CORTE INGLEES



Shirts: RAF STESMANS  
Pantaloons: SCOTCH&SODA  
Shoes: ANH NGUYEN

Shirts: RAF STESMANS  
Pantaloons: SCOTCH&SODA  
Shoes: DR MARTENS

# Select

MODEL MANAGEMENT

182 Rue de Rivoli, Paris, 75001, Ile-de-France, France

Phone: +33 (0) 1 40 20 15 15 Email: info.paris@selectmodel.com Website: <https://selectmodel.com/>

## MATTY CARRINGTON

Height 186cm / 6' 1.0"

Chest 101cm / 40"

Waist 74cm / 29"

Hips 95cm / 37.5"

Shoes EU/US/UK 44 / 11 / 9.5

Eyes Blue green

Hair Light brown

Neck 41cm / 16"

Suit size 50cm / 40"





# Select

MODEL MANAGEMENT

182 Rue de Rivoli, Paris, 75001, Ile-de-France, France

Phone: +33 (0) 1 40 20 15 15 Email: info.paris@selectmodel.com Website: <https://selectmodel.com/>

## MATTY CARRINGTON

Height 186cm / 6' 1.0"

Chest 101cm / 40"

Waist 74cm / 29"

Hips 95cm / 37.5"

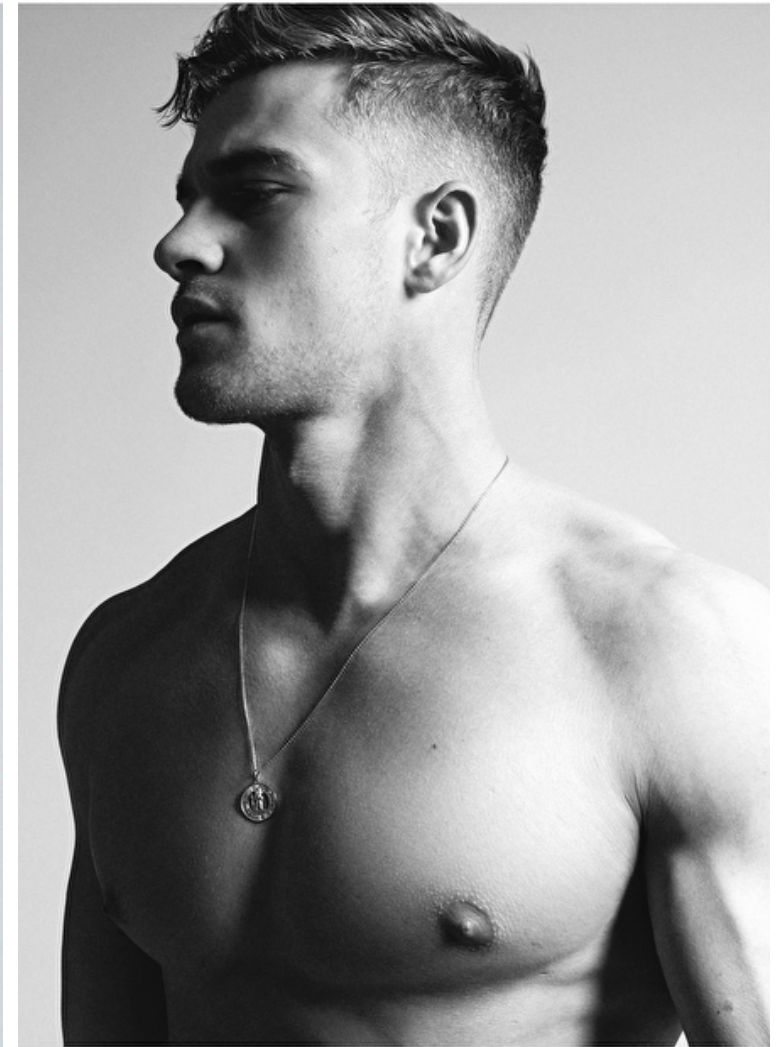
Shoes EU/US/UK 44 / 11 / 9.5

Eyes Blue green

Hair Light brown

Neck 41cm / 16"

Suit size 50cm / 40"





# Select

MODEL MANAGEMENT

182 Rue de Rivoli, Paris, 75001, Ile-de-France, France

Phone: +33 (0) 1 40 20 15 15 Email: info.paris@selectmodel.com Website: <https://selectmodel.com/>

## MATTY CARRINGTON

Height 186cm / 6' 1.0"

Chest 101cm / 40"

Waist 74cm / 29"

Hips 95cm / 37.5"

Shoes EU/US/UK 44 / 11 / 9.5

Eyes Blue green

Hair Light brown

Neck 41cm / 16"

Suit size 50cm / 40"



# Select

MODEL MANAGEMENT

182 Rue de Rivoli, Paris, 75001, Ile-de-France, France

Phone: +33 (0) 1 40 20 15 15 Email: info.paris@selectmodel.com Website: <https://selectmodel.com/>

## MATTY CARRINGTON

Height 186cm / 6' 1.0"

Chest 101cm / 40"

Waist 74cm / 29"

Hips 95cm / 37.5"

Shoes EU/US/UK 44 / 11 / 9.5

Eyes Blue green

Hair Light brown

Neck 41cm / 16"

Suit size 50cm / 40"





# Select

MODEL MANAGEMENT

182 Rue de Rivoli, Paris, 75001, Ile-de-France, France

Phone: +33 (0) 1 40 20 15 15 Email: info.paris@selectmodel.com Website: <https://selectmodel.com/>

## MATTY CARRINGTON

Height 186cm / 6' 1.0"

Chest 101cm / 40"

Waist 74cm / 29"

Hips 95cm / 37.5"

Shoes EU/US/UK 44 / 11 / 9.5

Eyes Blue green

Hair Light brown

Neck 41cm / 16"

Suit size 50cm / 40"



Matty wears prêt-à-porter  
shirts, and  
cotton quilt jacket and  
pencil dress and  
cotton quilt trousers,  
both by CRAIG GREEN,  
black cotton canvas  
and rubber slip-on  
moccasins by LANYIN

# Select

MODEL MANAGEMENT

182 Rue de Rivoli, Paris, 75001, Ile-de-France, France

Phone: +33 (0) 1 40 20 15 15 Email: info.paris@selectmodel.com Website: <https://selectmodel.com/>

## MATTY CARRINGTON

Height 186cm / 6' 1.0"

Chest 101cm / 40"

Waist 74cm / 29"

Hips 95cm / 37.5"

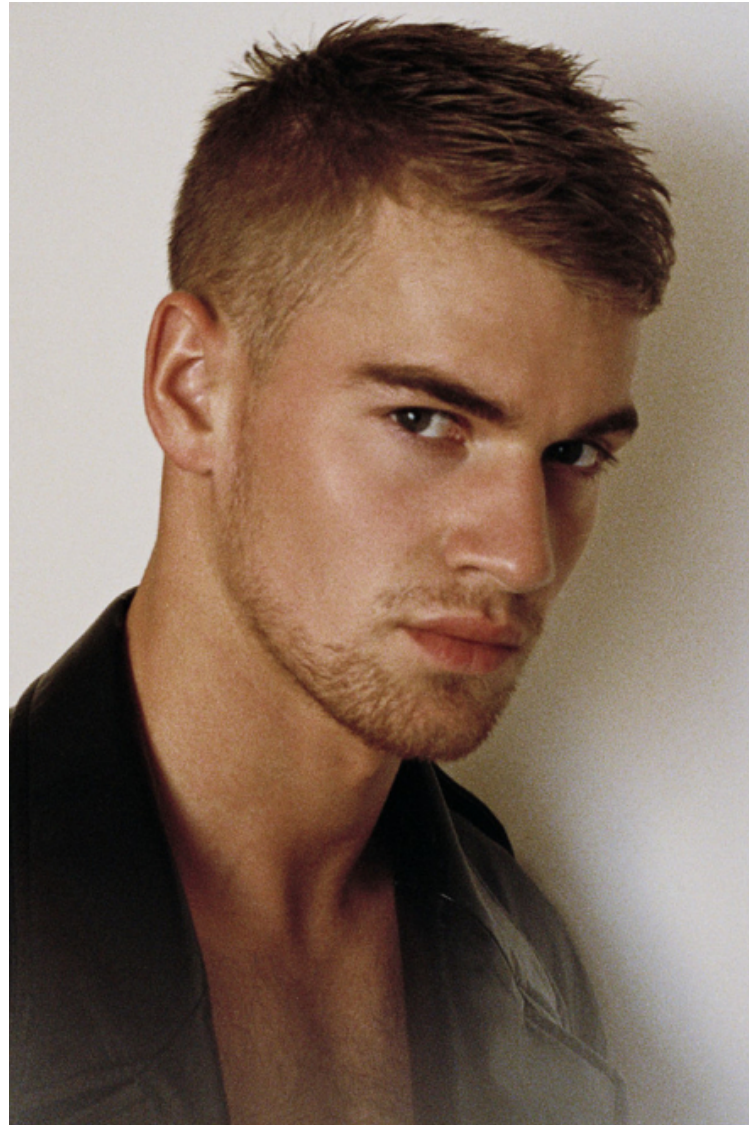
Shoes EU/US/UK 44 / 11 / 9.5

Eyes Blue green

Hair Light brown

Neck 41cm / 16"

Suit size 50cm / 40"





# Select

MODEL MANAGEMENT

182 Rue de Rivoli, Paris, 75001, Ile-de-France, France

Phone: +33 (0) 1 40 20 15 15 Email: info.paris@selectmodel.com Website: <https://selectmodel.com/>

## MATTY CARRINGTON

Height 186cm / 6' 1.0"

Chest 101cm / 40"

Waist 74cm / 29"

Hips 95cm / 37.5"

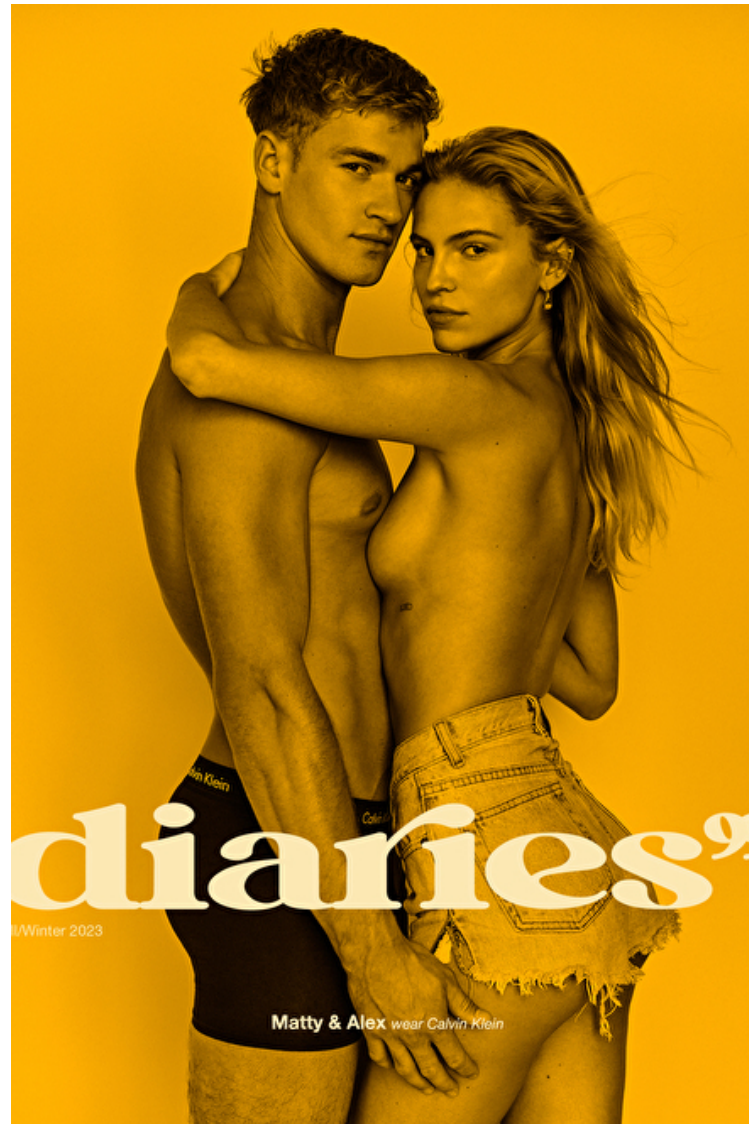
Shoes EU/US/UK 44 / 11 / 9.5

Eyes Blue green

Hair Light brown

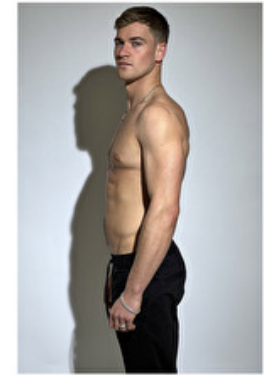
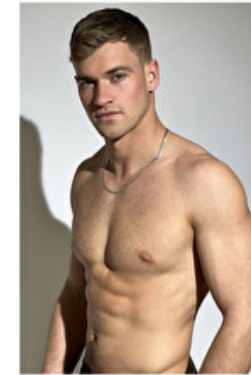
Neck 41cm / 16"

Suit size 50cm / 40"



# Select

MODEL MANAGEMENT



## MATTY CARRINGTON

HEIGHT 186CM BUST 99CM WAIST 81CM HIPS 99CM EYES BLUE HAIR BROWN

182 RUE DE RIVOLI, 75001, PARIS  
TEL: + 33 (0) 1 40 20 15 15