

## OMARI PHIPPS

Height 184cm / 6' 0.5"

Chest 81cm / 32"

Waist 66cm / 26"

Hips 94cm / 37"

Shoes EU/US/UK 41 / 8.5 / 7.5

Eyes Green grey

Hair Brown

Suit size 48cm / 38"



# Select

MODEL MANAGEMENT

182 Rue de Rivoli, Paris, 75001, Île-de-France, France

Phone: +33 (0) 1 40 20 15 15 Email: info.paris@selectmodel.com Website: <https://selectmodel.com/>

## OMARI PHIPPS

Height 184cm / 6' 0.5"

Chest 81cm / 32"

Waist 66cm / 26"

Hips 94cm / 37"

Shoes EU/US/UK 41 / 8.5 / 7.5

Eyes Green grey

Hair Brown

Suit size 48cm / 38"



*Detenerse  
para oler  
las flores*



*En su nueva colección para  
Louis Vuitton, Virgil Abloh  
revivifica la botánica y  
la infancia, dos antídotos  
contra la dura realidad*

*fotografía  
Quentin Saunier  
realización  
Nono Vázquez*



# Select

MODEL MANAGEMENT

182 Rue de Rivoli, Paris, 75001, Île-de-France, France

Phone: +33 (0) 1 40 20 15 15 Email: info.paris@selectmodel.com Website: <https://selectmodel.com/>

## OMARI PHIPPS

Height 184cm / 6' 0.5"

Chest 81cm / 32"

Waist 66cm / 26"

Hips 94cm / 37"

Shoes EU/US/UK 41 / 8.5 / 7.5

Eyes Green grey

Hair Brown

Suit size 48cm / 38"



# Select

MODEL MANAGEMENT

182 Rue de Rivoli, Paris, 75001, Île-de-France, France

Phone: +33 (0) 1 40 20 15 15 Email: info.paris@selectmodel.com Website: <https://selectmodel.com/>

## OMARI PHIPPS

Height 184cm / 6' 0.5"

Chest 81cm / 32"

Waist 66cm / 26"

Hips 94cm / 37"

Shoes EU/US/UK 41 / 8.5 / 7.5

Eyes Green grey

Hair Brown

Suit size 48cm / 38"





# Select

MODEL MANAGEMENT

182 Rue de Rivoli, Paris, 75001, Île-de-France, France

Phone: +33 (0) 1 40 20 15 15 Email: info.paris@selectmodel.com Website: <https://selectmodel.com/>

## OMARI PHIPPS

Height 184cm / 6' 0.5"

Chest 81cm / 32"

Waist 66cm / 26"

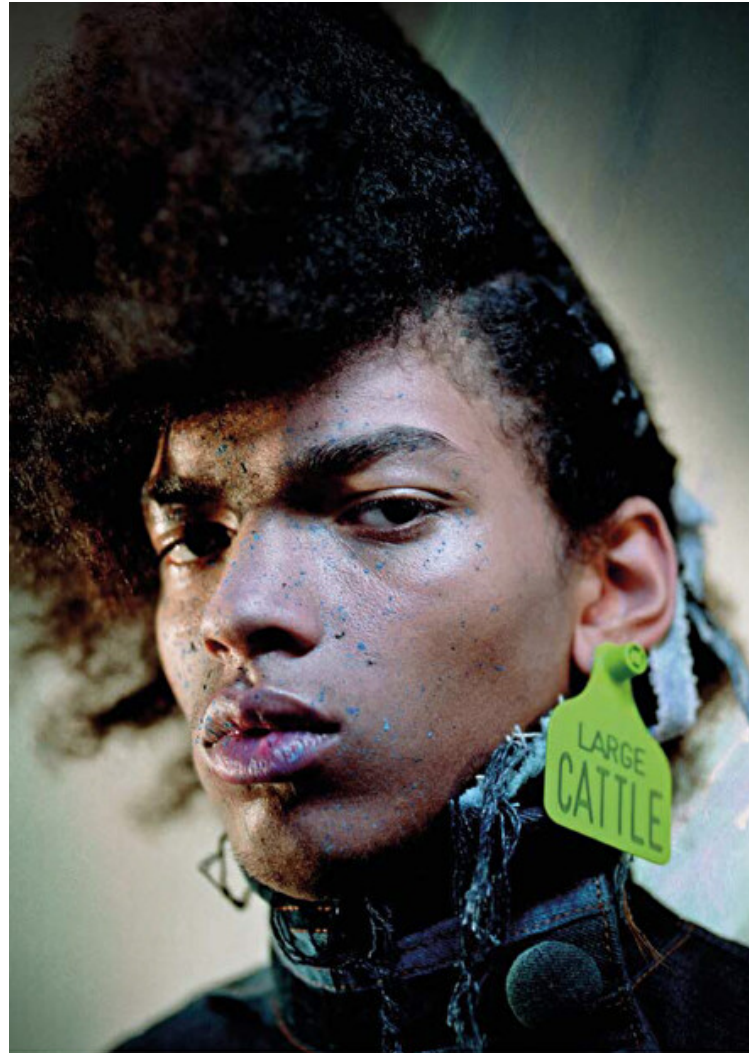
Hips 94cm / 37"

Shoes EU/US/UK 41 / 8.5 / 7.5

Eyes Green grey

Hair Brown

Suit size 48cm / 38"



Leather jacket, shirt, tie and sunglasses  
by Sullivan, boots Ex Infinitas

This spread: Top, jeans and earring Gerrit Jacob, keychains  
Thomas & Vine for Gerrit Jacob, boots Ripkar for Gerrit Jacob



Hair Ram Bartigi using Oribe and Babyliss Pro / Makeup: Theresa Davies using Bobbi  
Brown Cosmetics / Photography Assistant: Ryan D'Tole Collet and Joshua Osborne  
/ Fashion Assistant: Aisha Hui / Model Omari Phipps at Premier Model Management

# Select

MODEL MANAGEMENT

182 Rue de Rivoli, Paris, 75001, Île-de-France, France

Phone: +33 (0) 1 40 20 15 15 Email: info.paris@selectmodel.com Website: <https://selectmodel.com/>

## OMARI PHIPPS

Height 184cm / 6' 0.5"

Chest 81cm / 32"

Waist 66cm / 26"

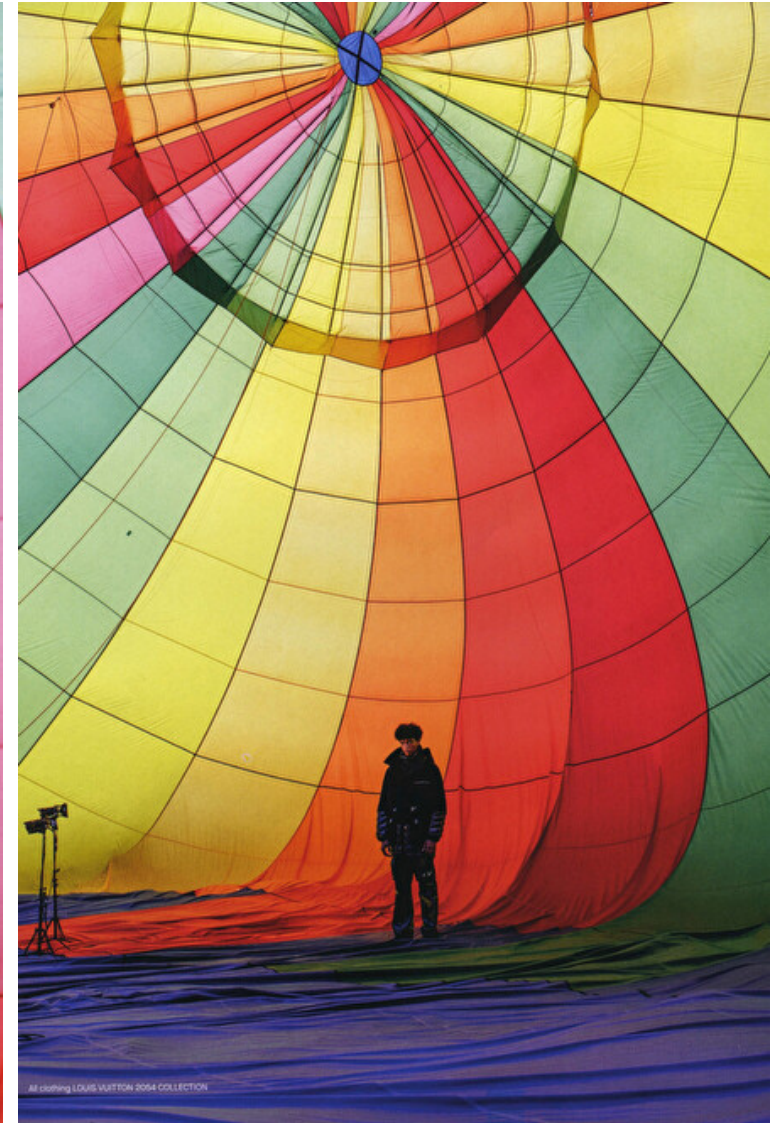
Hips 94cm / 37"

Shoes EU/US/UK 41 / 8.5 / 7.5

Eyes Green grey

Hair Brown

Suit size 48cm / 38"





# Select

MODEL MANAGEMENT

182 Rue de Rivoli, Paris, 75001, Île-de-France, France

Phone: +33 (0) 1 40 20 15 15 Email: info.paris@selectmodel.com Website: <https://selectmodel.com/>

## OMARI PHIPPS

Height 184cm / 6' 0.5"

Chest 81cm / 32"

Waist 66cm / 26"

Hips 94cm / 37"

Shoes EU/US/UK 41 / 8.5 / 7.5

Eyes Green grey

Hair Brown

Suit size 48cm / 38"



# Select

MODEL MANAGEMENT

182 Rue de Rivoli, Paris, 75001, Île-de-France, France

Phone: +33 (0) 1 40 20 15 15 Email: info.paris@selectmodel.com Website: https://selectmodel.com/

## OMARI PHIPPS

Height 184cm / 6' 0.5"

Chest 81cm / 32"

Waist 66cm / 26"

Hips 94cm / 37"

Shoes EU/US/UK 41 / 8.5 / 7.5

Eyes Green grey

Hair Brown

Suit size 48cm / 38"



# Select

MODEL MANAGEMENT



## OMARI PHIPPS

HEIGHT 184CM BUST 81CM WAIST 66CM HIPS 94CM EYES GREEN/GR HAIR BROW

182 RUE DE RIVOLI, 75001, PARIS  
TEL: + 33 (0) 1 40 20 15 15