

## TIM EASTON

Height 188cm / 6' 2.0"

Chest 97cm / 38"

Waist 88cm / 34.5"

Hips 96cm / 38"

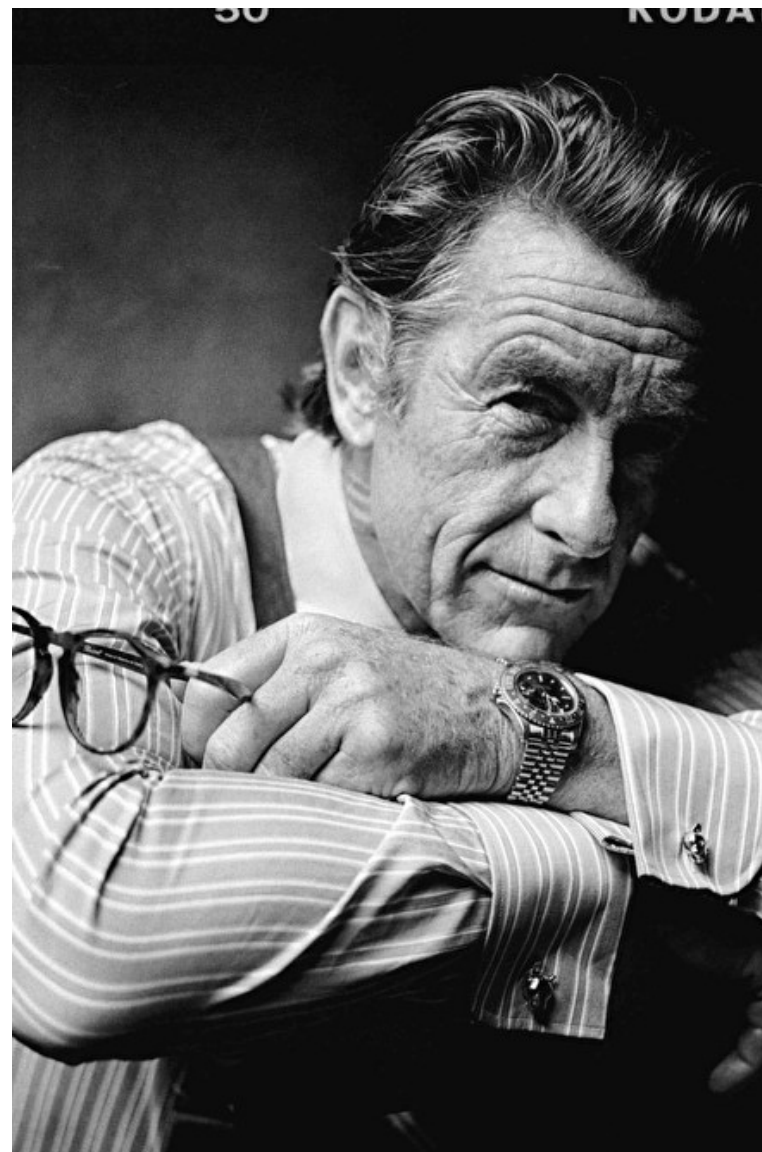
Shoes EU/US/UK 46 / 12.5 / 11

Hair Brown

Eyes Blue

Suit size 50cm / 40"

Suit cut Long



## TIM EASTON

Height 188cm / 6' 2.0"

Chest 97cm / 38"

Waist 88cm / 34.5"

Hips 96cm / 38"

Shoes EU/US/UK 46 / 12.5 / 11

Hair Brown

Eyes Blue

Suit size 50cm / 40"

Suit cut Long



his page.

from left: Coat (\$1,695) by Polo Ralph Lauren; Jacket (\$2,495), trousers (\$695), and tie by Ralph Lauren; shirt (\$292) by Brooks Brothers; boots (\$615) by O'Keefe; gloves (\$675) by Brunello Cucinelli. // Coat (\$4,150), suit (\$3,750), shirt (\$425), and tie (\$275) by Versace; shoes (\$425) by Tod's; gloves (\$475) by Hestra. // Coat (\$1,598) by Kenneth Cole. Opposite: Coat (\$5,300), suit (\$750) by Stefano Ricco; tie (\$150) by Paul Stuart; shoes (\$160) by Heston; gloves (\$675) by Brunello Cucinelli; socks (\$20) by J.M. Dickens London.



## TIM EASTON

Height 188cm / 6' 2.0"

Chest 97cm / 38"

Waist 88cm / 34.5"

Hips 96cm / 38"

Shoes EU/US/UK 46 / 12.5 / 11

Hair Brown

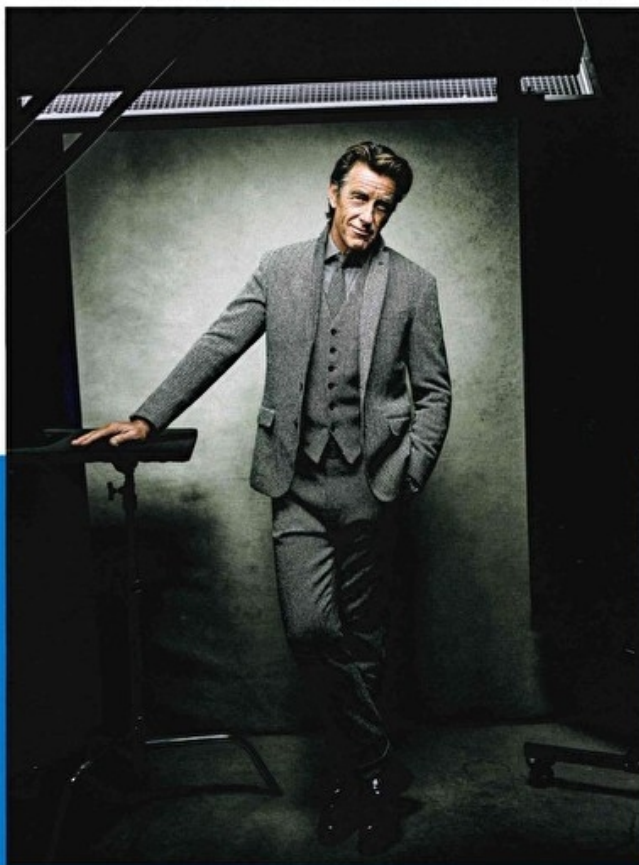
Eyes Blue

Suit size 50cm / 40"

Suit cut Long

### Tim Easton

No stranger to Esquire (he carried off a DB suit to perfection in our Hitchcock-inspired shoot "The Professionals" in April 2009), Easton's also booked high-profile ads for labels like Canali and Ralph Lauren. The English model thinks most '80s styles could hold up today, give or take a few tailoring tweaks. "I had some suits from back then that had shoulder pads," he says. "Looking at those now...oh, dear." —Brady Langmann



On this page:

Jacket (\$2,495), vest (\$595), shirt (\$595), trousers (\$695), and tie by Ralph Lauren; loafers (\$820) by Fratelli Rossetti; Patek Philippe automatic watch (\$11,400) by IWC. Opposite: Jacket (\$2,795), shirt (\$425), and tie (\$225) by Giorgio Armani.

111



# OFFICINE GÉNÉRALE

FALL/WINTER 25 - 26

PARIS • NEW YORK • LONDON • LOS ANGELES  
OFFICINEGENERALE.COM

## TIM EASTON

Height 188cm / 6' 2.0"

Chest 97cm / 38"

Waist 88cm / 34.5"

Hips 96cm / 38"

Shoes EU/US/UK 46 / 12.5 / 11

Hair Brown

Eyes Blue

Suit size 50cm / 40"

Suit cut Long



## TIM EASTON

Height 188cm / 6' 2.0"

Chest 97cm / 38"

Waist 88cm / 34.5"

Hips 96cm / 38"

Shoes EU/US/UK 46 / 12.5 / 11

Hair Brown

Eyes Blue

Suit size 50cm / 40"

Suit cut Long



182 Rue de Rivoli, Paris, 75001, Ile-de-France, France

**Phone:** +33 (0) 1 40 20 15 15 **Email:** info.paris@selectmodel.com **Website:** https://selectmodel.com/

## TIM EASTON

Height 188cm / 6' 2.0"

Chest 97cm / 38"

Waist 88cm / 34.5"

Hips 96cm / 38"

Shoes EU/US/UK 46 / 12.5 / 11

Hair Brown

Eyes Blue

Suit size 50cm / 40"

Suit cut Long



## TIM EASTON

Height 188cm / 6' 2.0"

Chest 97cm / 38"

Waist 88cm / 34.5"

Hips 96cm / 38"

Shoes EU/US/UK 46 / 12.5 / 11

Hair Brown

Eyes Blue

Suit size 50cm / 40"

Suit cut Long



182 Rue de Rivoli, Paris, 75001, Ile-de-France, France

**Phone:** +33 (0) 1 40 20 15 15 **Email:** info.paris@selectmodel.com **Website:** <https://selectmodel.com/>

## TIM EASTON

Height 188cm / 6' 2.0"

Chest 97cm / 38"

Waist 88cm / 34.5"

Hips 96cm / 38"

Shoes EU/US/UK 46 / 12.5 / 11

Hair Brown

Eyes Blue

Suit size 50cm / 40"

Suit cut Long

## TIM EASTON

Height 188cm / 6' 2.0"

Chest 97cm / 38"

Waist 88cm / 34.5"

Hips 96cm / 38"

Shoes EU/US/UK 46 / 12.5 / 11

Hair Brown

Eyes Blue

Suit size 50cm / 40"

Suit cut Long



**Select**  
MODEL MANAGEMENT



TIM EASTON

HEIGHT 188CM BUST 99CM WAIST 90CM HIPS 98CM EYES BLUE HAIR BROWN

182 RUE DE RIVOLI, 75001, PARIS  
TEL: + 33 (0) 1 40 20 15 15